

CATFORD ENGINEERING PRODUCTS

Jamestown
SA 5491

All Prices Excluding GST

Phone: 0418 641 566

www.catford.com.au sales@catford.com.au

Hand Pumps, Diverter & Ball Valves

*Manual Diverter Valves *Solenoid Diverter Valves

*Ball Valves *Locking Devices *Hand Pumps & Tanks





Lot 25, Mannanarie Road, Jamestown, South Australia 5491

PO Box 178, Jamestown, South Australia 5491



0418 641 566



sales@catford.com.au

Due to fluctuations in the Australian dollar and the economic climate, please be advised that all prices are subject to change.
Please contact us to confirm pricing.












All prices stated within are exclusive of GST
(All prices are correct as of January 1st 2022, but Catford Engineering reserve the right to change these prices without notice)

Hand Pumps, Diverter & Ball Valves

CATFORD Jamestown
SA 5491
CE ENGINEERING
PRODUCTS

Phone: 0418 641 566

www.catford.com.au sales@catford.com.au

Manual Diverter Valves 3 Port		61
Manual Diverter Valves 6 Port		61
Manual Diverter Valves 4 Port		61
Manual Diverter Valves 8 Port		62
Replacement Handles		62
Solenoid Diverter Valves 3 Port		63
Solenoid Diverter Valves 6 Port		63
Ball Valves 2 Port		64
Ball Valves 3 Port		64
Replacement Handles		64
Locking Devices		64
Hand Pumps		65
Hand Pump Tanks & Accessories		68

PREMIUM ITALIAN PRODUCT 

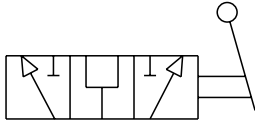
Manual Diverter Valves - 3 Port



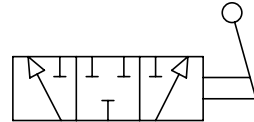
Part #	List Price \$	Ports	Max Pressure	Max Flow	Spool Crossover
DDF3380A	90.00	3/8" BSPP	350 bar	60 lpm	Open Centre
DDF3120A	118.00	1/2" BSPP	350 bar	90 lpm	Open Centre
DDF3340A	132.00	3/4" BSPP	350 bar	120 lpm	Open Centre
DDF3100A	182.00	1" BSPP	300 bar	200 lpm	Open Centre
DDF3380B	98.00	3/8" BSPP	350 bar	60 lpm	Closed Centre
DDF3120B	126.00	1/2" BSPP	350 bar	90 lpm	Closed Centre
DDF3340B	136.00	3/4" BSPP	350 bar	120 lpm	Closed Centre
DDF3100B	190.00	1" BSPP	300 bar	200 lpm	Closed Centre



A



B



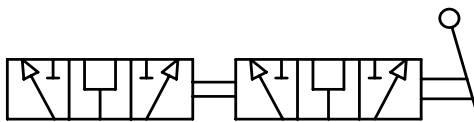
Manual Diverter Valves - 6 Port



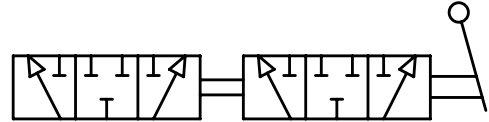
Part #	List Price \$	Ports	Max Pressure	Max Flow	Spool Crossover
DDF6380A	194.00	3/8" BSPP	350 bar	60 lpm	Open Centre
DDF6120A	250.00	1/2" BSPP	350 bar	90 lpm	Open Centre
DDF6340A	270.00	3/4" BSPP	350 bar	120 lpm	Open Centre
DDF6100A	394.00	1" BSPP	300 bar	200 lpm	Open Centre
DDF6380B	208.00	3/8" BSPP	350 bar	60 lpm	Closed Centre
DDF6120B	264.00	1/2" BSPP	350 bar	90 lpm	Closed Centre
DDF6340B	284.00	3/4" BSPP	350 bar	120 lpm	Closed Centre
DDF6100B	410.00	1" BSPP	300 bar	200 lpm	Closed Centre



A



B



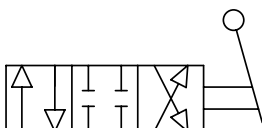
Manual Diverter Valves - 4 Port



Part #	List Price \$	Ports	Max Pressure	Max Flow	Spool Crossover
IDF4380A	142.00	3/8" BSPP	350 bar	60 lpm	Closed Centre
IDF4120A	149.00	1/2" BSPP	350 bar	90 lpm	Closed Centre
IDF4340A	212.00	3/4" BSPP	350 bar	120 lpm	Closed Centre
IDF4100A	228.00	1" BSPP	300 bar	200 lpm	Closed Centre
IDF4380B	137.00	3/8" BSPP	350 bar	60 lpm	Open Centre
IDF4120B	142.00	1/2" BSPP	350 bar	90 lpm	Open Centre
IDF4340B	205.00	3/4" BSPP	350 bar	120 lpm	Open Centre
IDF4100B	220.00	1" BSPP	300 bar	200 lpm	Open Centre



A



B

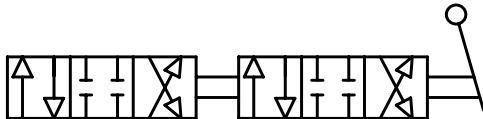


Manual Diverter Valves - 8 Port

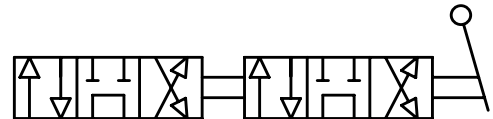
Part #	List Price \$	Ports	Max Pressure	Max Flow	Spool Crossover
IDF8380A	294.00	3/8" BSPP	350 bar	60 lpm	Closed Centre
IDF8120A	310.00	1/2" BSPP	350 bar	90 lpm	Closed Centre
IDF8340A	435.00	3/4" BSPP	350 bar	120 lpm	Closed Centre
IDF8100A	476.00	1" BSPP	300 bar	200 lpm	Closed Centre
IDF8380B	282.00	3/8" BSPP	350 bar	60 lpm	Open Centre
IDF8120B	296.00	1/2" BSPP	350 bar	90 lpm	Open Centre
IDF8340B	420.00	3/4" BSPP	350 bar	120 lpm	Open Centre
IDF8100B	462.00	1" BSPP	300 bar	200 lpm	Open Centre



A



B



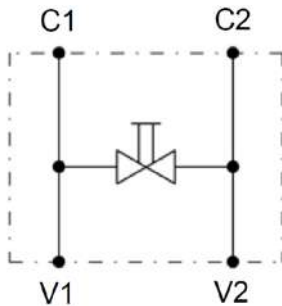
Manual Diverter Valves - Replacement Handles

Part #	List Price \$	To Fit	Port Size
12000149	11.00	DDF/IDF	1/4", 3/8", 1/2"
12000030	12.00	DDF/IDF	3/4", 1"



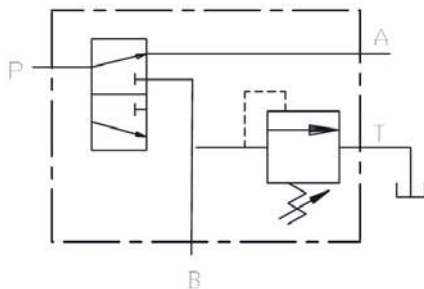
Manual Diverter Float Valves

Part #	List Price \$	Ports	Max Pressure	Max Flow
NEW VDF03	163.00	1/2" BSPP	210 bar	35 lpm



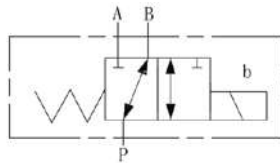
Manual Diverter Valves 2 Position with Relief

Part #	List Price \$	Ports	Max Pressure	Max Flow	Relief Range
NEW VI4WAM0480-20-A	430.00	3/4" BSPP	350 bar	120 lpm	30-26- bar



Solenoid Diverter Valves - 3 Port

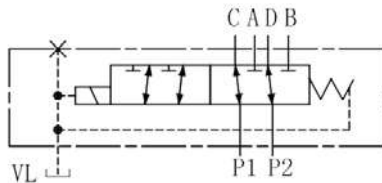
Part #	List Price \$	Ports	Max Pressure	Max Flow	Spool Crossover
HVC-10-12VDC	340.00	1/2" BSPP	210 bar	80 lpm	Open
HVC-10-24VDC	340.00	1/2" BSPP	210 bar	80 lpm	Open



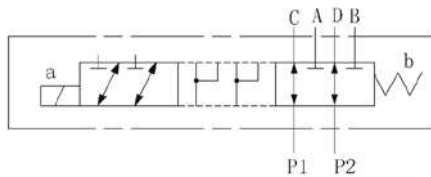
Solenoid Diverter Valves 6 - Port

(drain must be fitted above 150 bar where indicated)

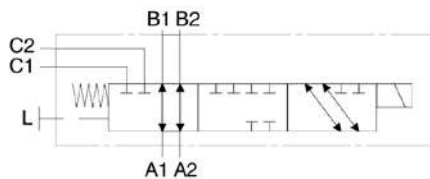
Part #	List Price \$	Ports	Drain	Max Pressure	Max Flow	Bankable	Spool Crossover
MOP-06-12VDC	440.00	3/8" BSPP	1/4" BSPP	250 bar	50 lpm	Yes	Closed
MOP-06-24VDC	440.00	3/8" BSPP	1/4" BSPP	250 bar	50 lpm	Yes	Closed



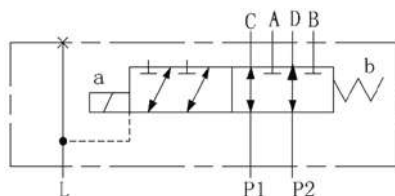
Part #	List Price \$	Ports	Drain	Max Pressure	Max Flow	Bankable	Spool Crossover
ZVH-06-12VDC	480.00	3/8" BSPP	-	210 bar	50 lpm	No	Open
ZVH-06-24VDC	480.00	3/8" BSPP	-	210 bar	50 lpm	No	Open



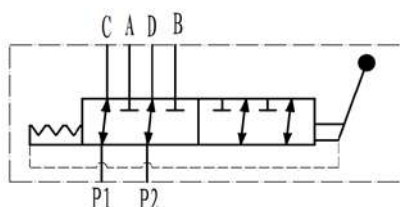
Part #	List Price \$	Ports	Drain	Max Pressure	Max Flow	Bankable	Spool Crossover
SCS4-1S-1Y-1G4-12VDC	550.00	1/2" BSPP	3/8" BSPP	315 bar	80 lpm	Yes	Closed
SCS4-1S-1Y-2G4-24VDC	550.00	1/2" BSPP	3/8" BSPP	315 bar	80 lpm	Yes	Closed



Part #	List Price \$	Ports	Drain	Max Pressure	Max Flow	Bankable	Spool Crossover
SVK-10-12VDC	578.00	3/4" BSPP	1/4" BSPP	250 bar	80 lpm	Yes	Closed
SVK-10-24VDC	578.00	3/4" BSPP	1/4" BSPP	250 bar	80 lpm	Yes	Closed

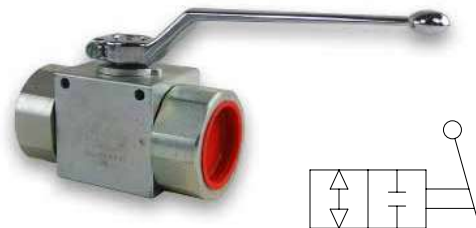


Part #	List Price \$	Ports	Drain	Max Pressure	Max Flow	Bankable	Spool Crossover
KVH6-MB-G1/2	460.00	1/2" BSPP	-	250 bar	50 lpm	No	Closed



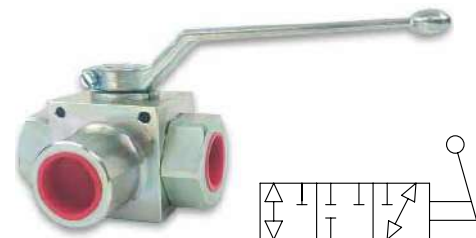
Ball Valves - 2 Port (Steel)

Part #	List Price \$	Ports	Max Pressure	Max Flow
RAS2140P	65.00	1/4" BSPP	500 bar	25 lpm
RAS2380P	71.00	3/8" BSPP	500 bar	35 lpm
RAS2120P	87.00	1/2" BSPP	500 bar	60 lpm
RAS2340P	141.00	3/4" BSPP	400 bar	100 lpm
RAS2100P	174.00	1" BSPP	350 bar	150 lpm
RAS2114P	185.00	1.1/4" BSPP	350 bar	150 lpm
RAS2112P	207.00	1.1/2" BSPP	350 bar	150 lpm



Ball Valves - 3 Port (Steel)

Part #	List Price \$	Ports	Max Pressure	Max Flow
RAS3140P	131.00	1/4" BSPP	400 bar	25 lpm
RAS3380P	141.00	3/8" BSPP	400 bar	35 lpm
RAS3120P	152.00	1/2" BSPP	350 bar	60 lpm
RAS3340P	239.00	3/4" BSPP	350 bar	100 lpm
RAS3100P	289.00	1" BSPP	350 bar	150 lpm
RAS3114P	304.00	1.1/4" BSPP	350 bar	150 lpm
RAS3112P	348.00	1.1/2" BSPP	350 bar	150 lpm



Ball Valves - Replacement Handles

Part #	List Price \$	To Fit	Port Size
89800001	44.00	RAS2/RAS3	1/4", 3/8", 1/2"
89800002	78.00	RAS2/RAS3	3/4", 1", 1.1/4", 1.1/2"



Ball Valve Locking Devices (Steel)

Part #	List Price \$	To Fit	Port Size
LK6-F	78.00	RAS2/RAS3	1/4", 3/8", 1/2"
LK20-F	112.00	RAS2/RAS3	3/4", 1", 1.1/4", 1.1/2"
SB6	108.00	RAS2/RAS3	1/4", 3/8", 1/2"
SB20	169.00	RAS2/RAS3	3/4", 1", 1.1/4", 1.1/2"

LK



SB



Hand Pump (Single Acting) with Relief - Remote Mounting



Pressure relief valve, dual action hand pump for single-acting cylinder, for fixing to wall.

Part #	List Price \$	Size	Optimal Pressure	Maximum Pressure
PMP20-BYB-E-S	419.00	20 cc	150 bar	350 bar
PMO50-BYB-E-S	476.00	50 cc	50 bar	280 bar
PMO70-BYB-E-S	685.00	70 cc	80 bar	200 bar

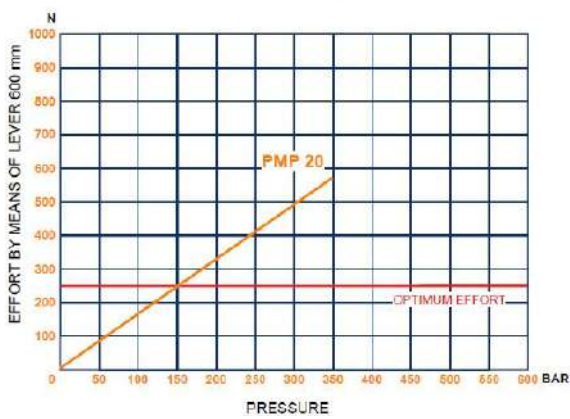
Pressure relief valve, dual action hand pump for single-acting cylinder, for fixing to wall - plus hand release knob

Part #	List Price \$	Size	Optimal Pressure	Maximum Pressure
PMP20-BYB-S	444.00	20 cc	150 bar	350 bar
PMO50-BYB-S	494.00	50 cc	50 bar	280 bar
PMO70-BYB-S	699.00	70 cc	80 bar	200 bar

20cc

EFFORT DIAGRAM

pin in D (distance between centers: 40 mm)



PMP

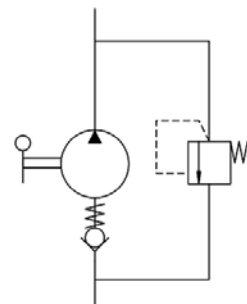
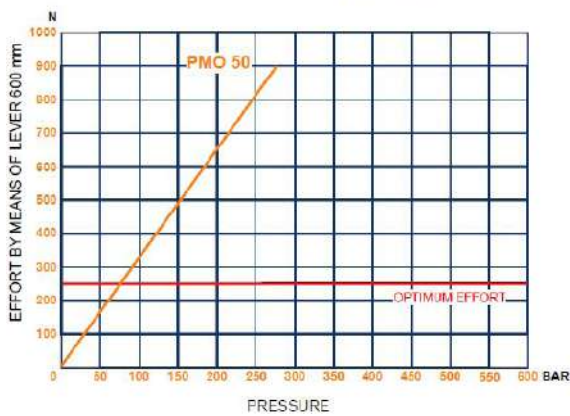


PMO

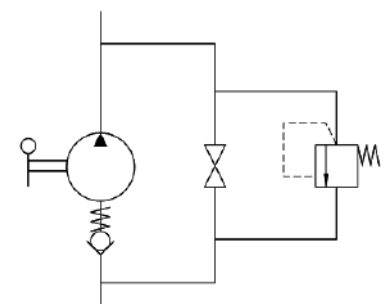
50cc

EFFORT DIAGRAM

pin in E (distance between centers: 51 mm)



Without release hand knob

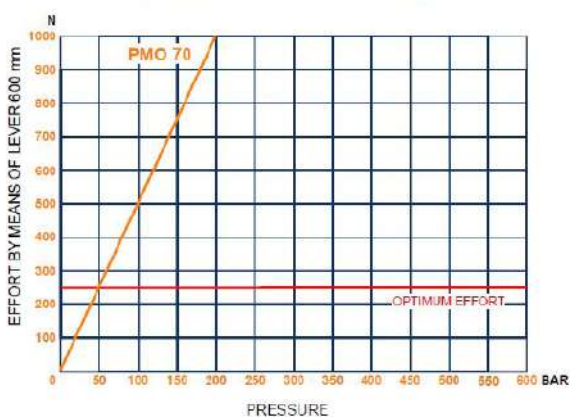


With release hand knob

70cc

EFFORT DIAGRAM

pin in E (distance between centers: 51 mm)



All hand pumps have rubber shaft protection

Hand Pump (Single Acting) with Relief - Tank Mount

Dual action hand pump for single-acting cylinder, for fixing to tank. Pressure relief valve with relief hand knob.

Part #	List Price \$	Size	Optimal Pressure	Maximum Pressure
PM12-BYB-S	433.00	12 cc	220 bar	380 bar
PM25-BYB-S	440.00	25 cc	120 bar	350 bar
PM45-BYB-S	465.00	45 cc	80 bar	250 bar

Dual action hand pump for single-acting cylinder, for fixing to tank. Pressure relief valve with relief release lever.

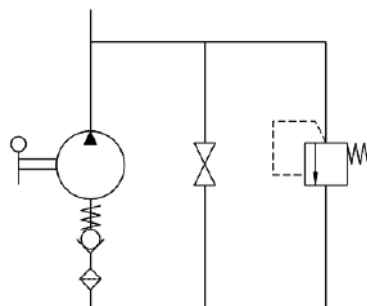
Part #	List Price \$	Size	Optimal Pressure	Maximum Pressure
PM12-BYB-L-S	455.00	12 cc	220 bar	380 bar
PM25-BYB-L-S	465.00	25 cc	120 bar	350 bar
PM45-BYB-L-S	476.00	45 cc	80 bar	250 bar



With release hand knob

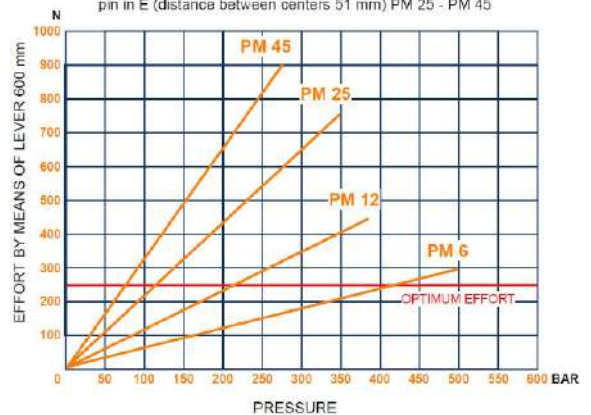


With release lever



EFFORT DIAGRAM

pin in D (distance between centers 40 mm) PM 6 - PM 12
pin in E (distance between centers 51 mm) PM 25 - PM 45



All hand pumps have rubber shaft protection

Tanks on page 69

Hand Pump (Double Acting) with Relief - Tank Mount

Dual action hand pump for double-acting cylinder, for fixing to tank. Pressure relief valve, 4/3 flow divider closed centre.

Part #	List Price \$	Size	Optimal Pressure	Maximum Pressure
PMD12-BYB-S	480.00	12 cc	220 bar	380 bar
PMD25-BYB-S	487.00	25 cc	120 bar	350 bar
PMD45-BYB-S	509.00	45 cc	80 bar	280 bar

As above, with release lever.

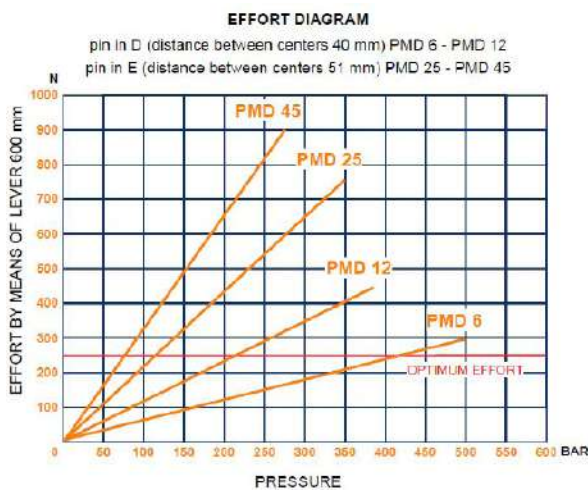
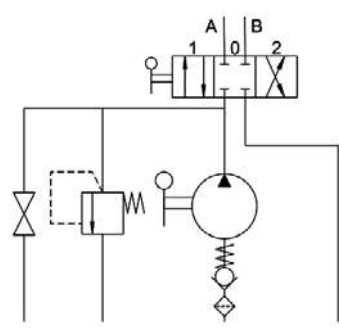
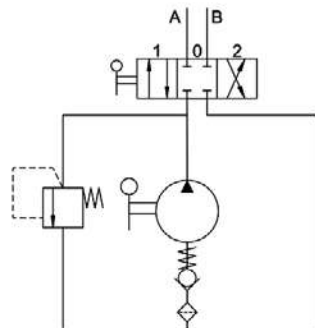
Part #	List Price \$	Size	Optimal Pressure	Maximum Pressure
PMD12-BYA-L-S	523.00	12 cc	220 bar	380 bar
PMD25-BYA-L-S	523.00	25 cc	120 bar	350 bar
PMD45-BYA-L-S	552.00	45 cc	80 bar	280 bar



Without release lever



With release lever



All hand pumps have rubber shaft protection

Tanks on page 69

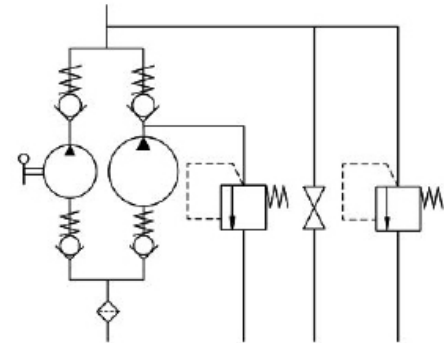
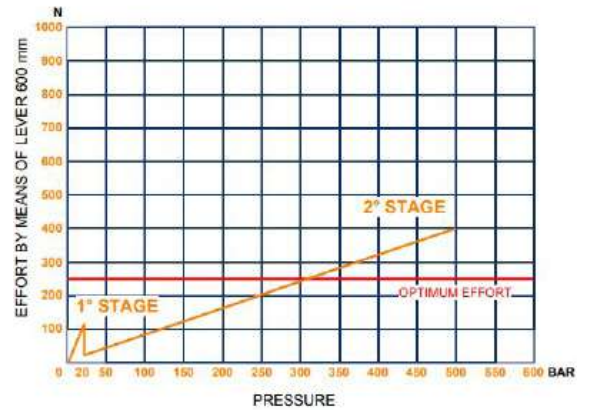
Hand Pump (Hi-Lo) with Relief - Tank Mount

Part #	List Price \$	Size		Optimal Pressure		Relief
		Stage 1	Stage 2	Stage 1	Stage 2	
PM2V-5/80-A-BYB-PM-S	1374.00	80 cc	5 cc	500 bar	20 bar	Adjustable relief 50-500 bar



EFFORT DIAGRAM

pin in E (distance between centers: 51 mm)



All hand pumps have rubber shaft protection

Tanks on page 69

Hand Pump Accessories

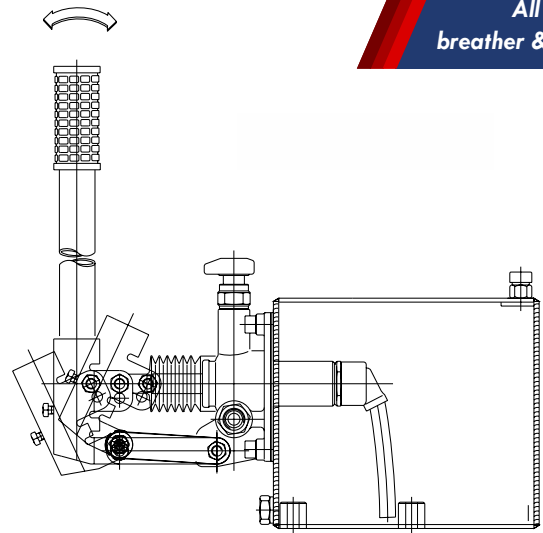
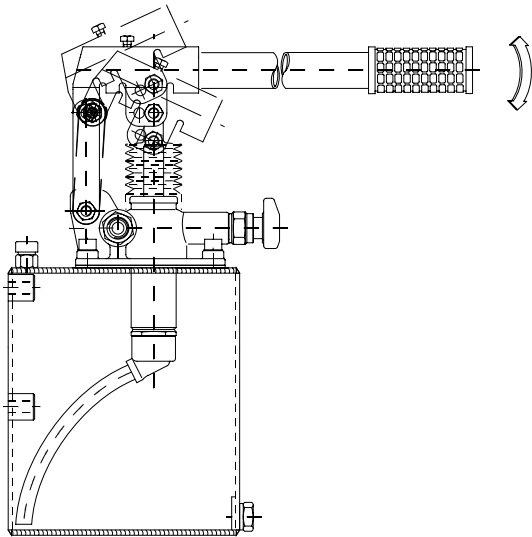
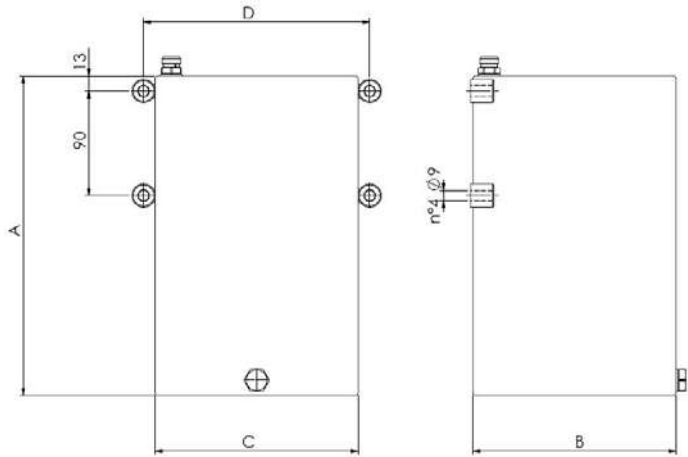
Part #	List Price \$	Description
0038.0001.00.00	22.00	Rubber boot - pump shafts
6800.0009	50.00	Pump handle
3000.0000.01.00	34.00	Gasket & bolt kit - PM pumps
3000.0001.00.00	34.00	Gasket & bolt kit - PMD pumps
3000.0005.00.00	48.00	Lowering valve (blue knob)
3000.0006.00.00	39.00	Relief valve
3000.0007.00.00	60.00	Unload valve (lever)
036.0006.00.00	40.00	Tank breather



Hand Pump Tanks



Part #	List Price \$	Size	A	B	C	D
6500.0140	150.00	1 L	120mm	150mm	100mm	120mm
6500.0141	160.00	2 L	185mm	150mm	100mm	120mm
6500.0142	175.00	3 L	255mm	150mm	100mm	120mm
6500.0143	210.00	5 L	200mm	175mm	175mm	195mm
6500.0144	250.00	7 L	275mm	175mm	175mm	195mm
6500.0145	295.00	10 L	380mm	175mm	175mm	195mm



All tanks include
breather & suction tube