

CATFORD

Jamestown

SA 5491

ENGINEERING PRODUCTS

All Prices Excluding GST

Phone: 0418 641 566

www.catford.com.au sales@catford.com.au

Piston Pumps

***Axial Piston Pumps & Controllers**





Lot 25, Mannanarie Road, Jamestown, South Australia 5491

PO Box 178, Jamestown, South Australia 5491



0418 641 566



sales@catford.com.au

Due to fluctuations in the Australian dollar and the economic climate, please be advised that all prices are subject to change.
Please contact us to confirm pricing.

All prices stated within are exclusive of GST
(All prices are correct as of January 1st 2022, but Catford Engineering reserve the right to change these prices without notice)

Piston Pumps

CATFORD Jamestown
SA 5491
ENGINEERING
PRODUCTS

Phone: 0418 641 566

www.catford.com.au sales@catford.com.au

Axial Piston Pumps

131

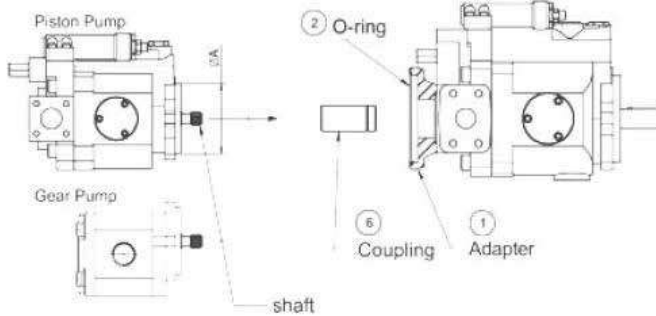
Pump & Controller Options

132

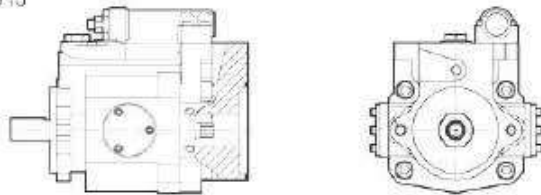
V-Axial Piston Pumps								
Part #	List Price \$	Displacement at 100psi (7 bar)			Pressure Adj. Range Bar	Speed RPM		Weight KG
		cm ³ /rev	1500rpm lpm	1800rpm lpm		Max	Min	
V15	2137.00	15.0	22.5	27.0	1: 8~70 2: 15~140 3: 20~210 4: 20~250	1800	500	13
V23	2643.00	23.0	35.4	41.4		1800	500	22
V38	3347.00	37.8	56.7	68.0		1800	500	26
V50	5507.00	51.5	77.2	92.7		1800	500	56
V70	6397.00	69.7	104.5	125.4	1: 8~70 2: 15~140 3: 20~210	1800	500	56

Pump 2

Pump 1



V15



V23-V70



Standard



Thru Drive Coupler



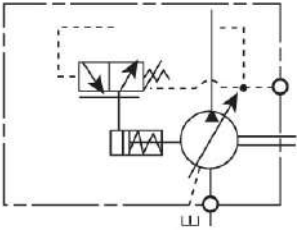
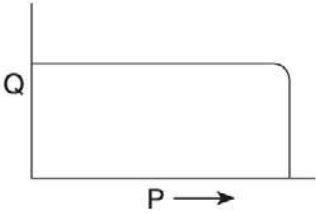
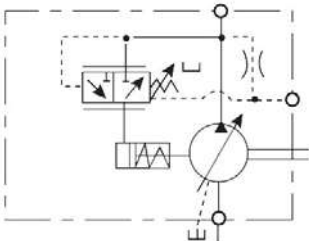
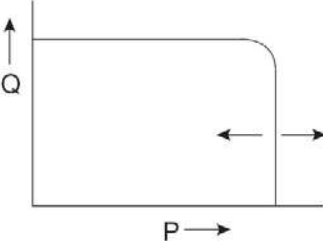
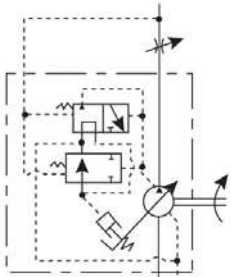
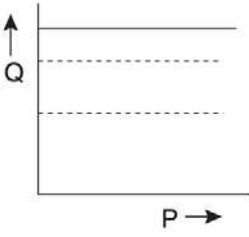
ORDER CODES FOR PISTON PUMPS

1	2	3	4	5	6	-	7	8	9	10
V	15	A	3	R					40	

1	SERIES		
	Axial piston pump Variable displacement High pressure version	Nominal pressure: 175 bar Maximum pressure: 280 bar Single operation period: 250 bar (6ms), 315 bar (2.5ms)	V

2	SIZE & DISPLACEMENT				
	15	23	38	50	70
Size	1	2	3	4	4
Displacement cm ³ /rev	15	23	37.8	51.5	69.7

3	CONTROL DEVICE	List Price \$ (V15/23/38)	List Price \$ (V50/70)	
	Standard pressure control	-	-	A
	Remote pressure control	360.00	570.00	G
	Load-sensing control high pressure	403.00	504.00	HLC

CONTROLS	SYMBOL	CHARACTERISTIC	SPECIFICATIONS
A			<ol style="list-style-type: none"> When system pressure increases and reaches required pressure, the flow decreases automatically and the pressure is constant. Pressure and flow can be manually adjusted.
G			<ol style="list-style-type: none"> The same function of control type A. Pressure can be adjusted remotely by the remote control valve.
HLC			<ol style="list-style-type: none"> HL valve with two different pressures, control displacement. The flow can be changed by HL valve, the sensing feedback can reach low oil temperature and energy saving.

4	PRESSURE ADJUSTING	
	8 - 70 bar	1
	15 - 140 bar	2
	20 - 210 bar	3
	20 - 250 bar	4

5	ROTATION	
	Clockwise ↻	R
	Counter Clockwise ↻	L

6	DIRECTION OF PIPE CONNECTIONS	
	Standard: side port (flange)	(blank)

7	SHAFT TYPE	Keyed (standard)		Splines (optional)	
	V15	Keyed 3/4"	(blank)	13T 16/32 DP	S
	V23, V38	Keyed 7/8"	(blank)	13T 16/32 DP	S
	V50, V70	Keyed 1.1/4"	(blank)	14T 12/24 DP	S

8	VOLTAGE - OPTION UNAVAILABLE
---	------------------------------

9	THREAD TYPE	
	BSPP (G)	40

3	THRU DRIVE & SECOND PUMP	Part	List Price \$	
	∅ 82.55mm, SAE A	V15, V23, V38	2315.00	D
	∅ 82.55mm, SAE A	V50, V70	2780.00	D

Thru Drive Couplers

Part #	List Price \$	Piston Pump Displacement	Thru Drive Mount	Spline
COUPV15-15	207.00	V15-17	SAE A	9 Tooth
COUPV23-1	207.00	V23-25	SAE A	9 Tooth
COUPV38-1	207.00	V38-42	SAE A	9 Tooth
COUPV70-1	207.00	V50-70	SAE A	9 Tooth

V-Axial Piston Pump Seal Kits

Part #	List Price \$	Piston Pump
5E00033	81.00	V15-17
5E00035	113.00	V23-25
5E00037	135.00	V38-42
5E00042	126.00	V50-70