

CATFORD ENGINEERING PRODUCTS

Jamestown
SA 5491

All Prices Excluding GST

Phone: 0418 641 566

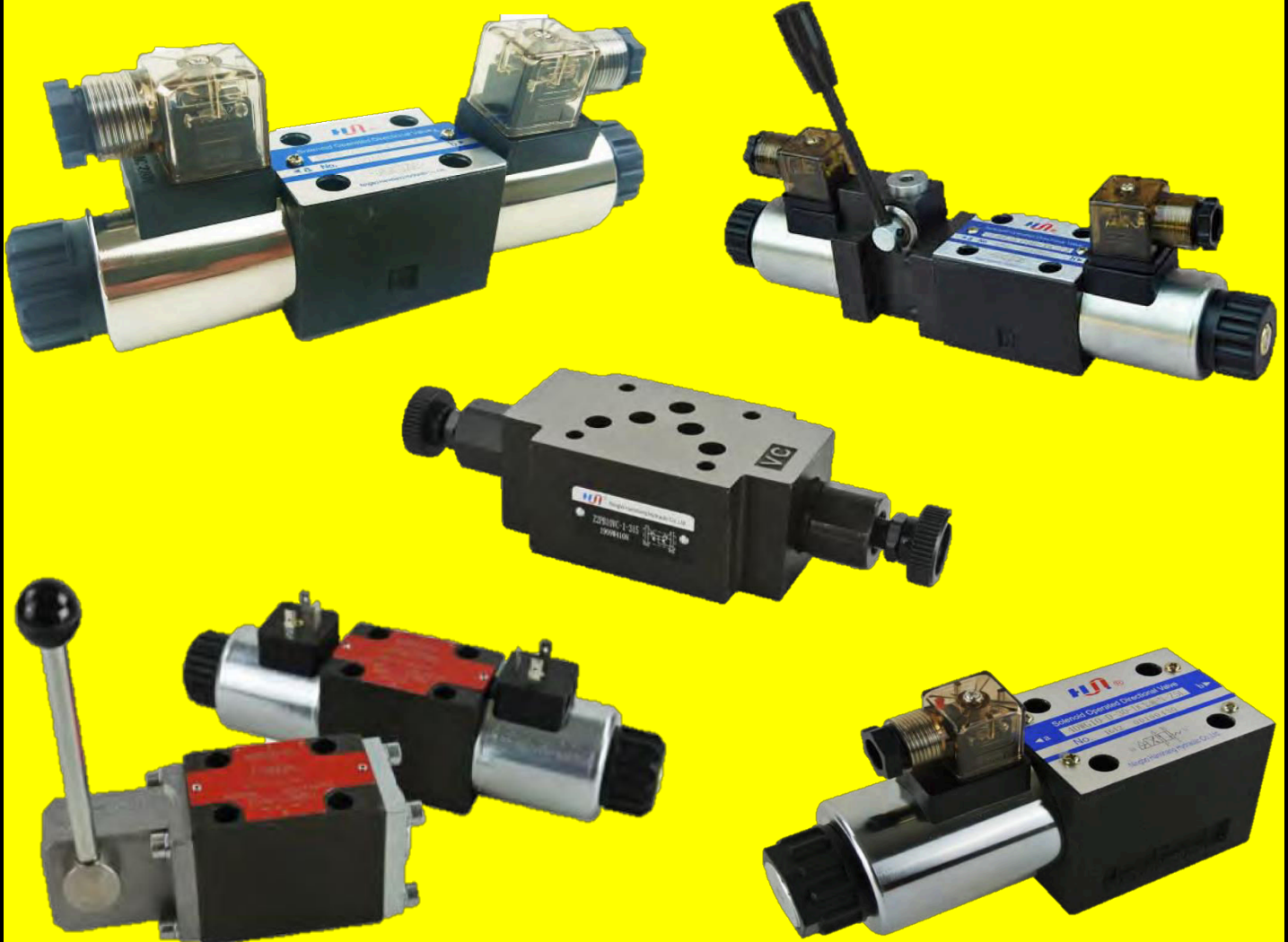
www.catford.com.au sales@catford.com.au

Cetop Valves, Subplates & Manifolds

*Cetop 3, 5 & 7 Solenoid Valves *Manual Solenoid

*Subplates *Manifolds *Coils *DIN *Plugs

*Sandwich *Valves *Endplates *Relief Cartridges





Lot 25, Mannanarie Road, Jamestown, South Australia 5491

PO Box 178, Jamestown, South Australia 5491



0418 641 566



sales@catford.com.au

Due to fluctuations in the Australian dollar and the economic climate, please be advised that all prices are subject to change.
Please contact us to confirm pricing.

All prices stated within are exclusive of GST
(All prices are correct as of January 1st 2024, but Catford Engineering reserve the right to change these prices without notice)

Cetop Valves, Subplates & Manifolds

CATFORD Jamestown
SA 5491
CE ENGINEERING
PRODUCTS

Phone: 0418 641 566

www.catford.com.au sales@catford.com.au

Stackable Directional Control Valve Solenoid Operated (HDF Series) & Accessories

Part #	List Price \$	Max Pressure	Max Flow	Ports	Transition	Diagram
HDF-ES-1C	433.00	250 bar	20 lpm	1/4" BSPP	Closed	
HDF-ES-1LL	401.00	250 bar	20 lpm	1/4" BSPP	Closed	
HDF-ES-4C	507.00	250 bar	20 lpm	1/4" BSPP	Open	
HDF-ES-3C	433.00	250 bar	20 lpm	1/4" BSPP	A + B to T	
HDF-ES-0C	433.00	250 bar	20 lpm	1/4" BSPP	Open	
HDF-ES-0ML	401.00	250 bar	20 lpm	1/4" BSPP	Open	
AMF-MOP-25	259.00	250 bar	Pressure relief valve 100-250 bar			
AMF-HP2	381.00	200 bar	2cc hand pump			
AMF-RO-P/6.3/10	554.00	320 bar	16-63 bar direct acting pressure reducing valve			
AMF-RO-P/16/10	554.00	320 bar	40-160 bar direct acting pressure reducing valve			
AMF-RO-P/20/10	554.00	320 bar	50-210 bar direct acting pressure reducing valve			

aidro
MADE IN EUROPE

HDF Series - coils not included in price

CS Series - coils are included in price



HDF-ES



CS-3C2

Stackable Direction Control Valve Solenoid Operated (CS Series)

Part #	List Price \$	Transition	Voltage	Max Flow	Max Pressure	Ports	Diagram
CS-3C2-03-D12	328.00	Closed	12v	15 lpm	200 bar	1/4" BSPP	
CS-3C2-03-D24	328.00	Closed	24v	15 lpm	200 bar	1/4" BSPP	
CS-3C4-03-D12	328.00	A + B open to T	12v	15 lpm	200 bar	1/4" BSPP	
CS-3C4-03-D24	328.00	A + B open to T	24v	15 lpm	200 bar	1/4" BSPP	
CS-C3B-03-D12	308.00	Open	12v	15 lpm	200 bar	1/4" BSPP	
CS-C3B-03-D24	308.00	Open	24v	15 lpm	200 bar	1/4" BSPP	

Stackable Directional Control Valves, End Plates & Accessories

Part #	List Price \$	Material	Port	Description
PD1-03/32-0	142.00	Steel	-	End plate
T0407	174.00	Aluminium	-	End plate
PD1-03/32-5	196.00	Steel	3/8" BSPP	Remote mount plate port
T0407-PT	174.00	Aluminium	9/16" UNO	Remote Mount plate port
MAF-KIT-2	103.00	Aluminium	-	Remote mount mounting bracket
CS-03-M	57.00	Aluminium	-	Manual override knob for CS valves
GE-01	59.00	Aluminium	-	Manual override knob for HDF valves



PD1-03



T0407



MAF-KIT-2



CS-03-M



GE-01

Coils (to suit HDF Series)

Part #	List Price \$	Voltage	Amp Draw	Core Size	Length	Connector
BO1-012C	69.00	12v DC	2.8 amp	13.8mm	41.2mm	DP-LED-DC
BO1-024C	69.00	24v DC	1.4 amp	13.8mm	41.2mm	DP-LED-DC
BO1-220R	69.00	220v RAC	0.17 amp	13.8mm	41.2mm	DP-REC



aidro
MADE IN EUROPE

Coils (to suit CS Series)

Part #	List Price \$	Voltage	Amp Draw	Core Size	Length	Connector
CS-12V	75.00	12v DC	2.8 amp	13.2mm	37mm	DP-LED-DC
CS-24V	75.00	24v DC	1.4 amp	13.2mm	37mm	DP-LED-DC
CS-A22	164.00	220v RAC	0.17 amp	13.2mm	37mm	DP-REC



Stackable Directional Control Valve Bolt Kits

Part #	List Price \$	Description
VIT-HDF-M6X55	15.00	Bolt Kit - 1 Section HDF/CS Valve
VIT-HDF-M6X100	63.00	Bolt Kit - 2 Section HDF/CS Valve
VIT-HDF-M6X133	74.00	Bolt Kit - 3 Section HDF/CS Valve
VIT-HDF-M6X163	75.00	Bolt Kit - 4 Section HDF/CS Valve
VIT-HDF-M6X194	79.00	Bolt Kit - 5 Section HDF/CS Valve
VIT-HDF-M6X224	80.00	Bolt Kit - 6 Section HDF/CS Valve
VIT-HDF-M6X256	85.00	Bolt Kit - 7 Section HDF/CS Valve
VIT-HDF-M6X287	89.00	Bolt Kit - 8 Section HDF/CS Valve



aidro
MADE IN EUROPE

Cetop 3 Directional Control Valve Solenoid & Lever

	SOLENOID	LEVER
Nominal Flow Rate	60 lpm	60 lpm
Maximum Recommended Flow	80 lpm	80 lpm
Maximum Nominal Pressure P _{A,B}	350 bar	320 bar
Maximum Pressure on T Port	210 bar	100 bar
Duty Cycle	100%	n/a
Bolts (single valve)	M5x45mm (tighten to 8Nm)	

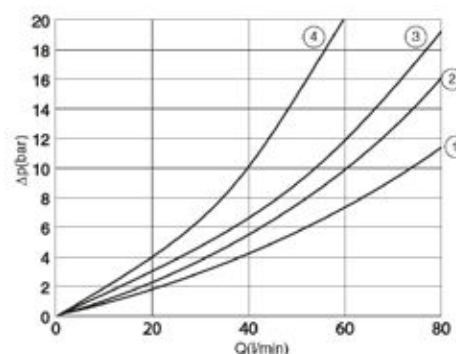


aidro
MADE IN EUROPE

Typical Diagrams

Typical Δp -Q curves for valves HD3-ES-* in standard configuration. Measured with mineral oil at 32mm²/s and T=40°C.

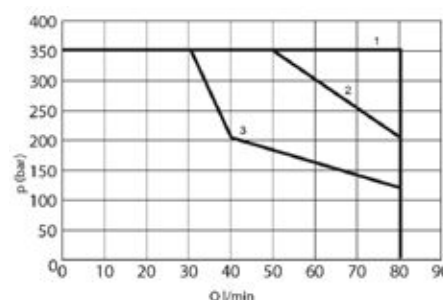
Spool	P-A	P-B	A-T	B-T	P-T
1C	1	1	2	2	-
4C	3	3	4	4	1
0C	1	1	2	2	1
3C	1	1	2	2	-
1LL	1	1	2	2	-
1LLb	1	1	2	2	-
1ML		1	2	-	-
4ML	4	-	4	-	2
0ML	-	1	2	-	1
3ML	1	-	2	-	-



Hydraulic Limit of Use

Δp -Q characteristics limits for safe use of HD3-ES-* solenoid operated valves. Measured with mineral oil at 32mm²/s and T=40°C.

Spool	Limit	Spool	Limit
1C	1	1ML	1
4C	3	0ML	2
0C	2	1MLb	1
3C	2	1LLb	1
1LL	1	4MLb	3
3ML	2	0MLb	2
4ML	3	3MLb	2



HYDRAULIC FLUID

Seals and materials used on standard HD3-* valves are fully compatible with hydraulic fluids of mineral base, upgrading with antifoaming and antioxidising agents.

The hydraulic fluid must be kept clear and filtered to ISO4406 class 19/17/14, or better, and used in a recommended viscosity range from 10cSt to 60cSt.

Cetop 3 Directional Control Valve - Solenoid Operated

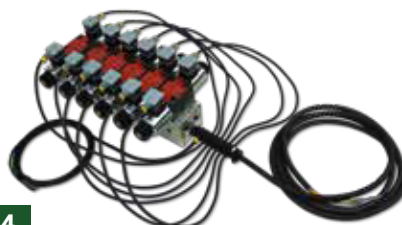
Part #	List Price \$	Coil Voltage	Diagram
HD3-ES-0C-012C/10	482.00	12v DC	
HD3-ES-0C-024C/10	482.00	24v DC	
HD3-ES-0C-230A/10	555.00	230v AC	
HD3-ES-0C-115A/10	555.00	115v AC	
HD3-ES-1C-012C/10	482.00	12v DC	
HD3-ES-1C-024C/10	482.00	24v DC	
HD3-ES-1C-230A/10	555.00	230v AC	
HD3-ES-1C-115A/10	555.00	115v AC	
HD3-ES-3C-012C/10	482.00	12v DC	
HD3-ES-3C-024C/10	482.00	24v DC	
HD3-ES-3C-230A/10	555.00	230v AC	
HD3-ES-3C-115A/10	555.00	115v AC	
HD3-ES-4C-012C/10	548.00	12v DC	
HD3-ES-4C-024C/10	548.00	24v DC	
HD3-ES-4C-230A/10	621.00	230v AC	
HD3-ES-4C-115A/10	621.00	115v AC	
HD3-ES-1N-012C/10	587.00	12v DC	
HD3-ES-1N-024C/10	587.00	24v DC	
HD3-ES-1N-230A/10	622.00	230v AC	
HD3-ES-1N-115A/10	622.00	115v AC	

Cetop 3 Solenoid Valve Accessories

Part #	List Price \$	Description
NEW T03-T	224.00	Soft Shifting Armature Reduces/eliminates hammer effect in the circuit. Shifting time when energised 300-500ms (versus 30-50ms on standard valve).
NEW KIT-03K	69.00	Momentary override pin Extended emergency actuator pins permitting quick and easy "hand operation" of valves.



aidro
MADE IN EUROPE



Wiring harnesses - see page 64

DIN plugs/accessories
on page 265-266

Cetop 3 Directional Control Valve - Solenoid Operated

Part #	List Price \$	Coil Voltage	Diagram
HD3-ES-0LL-012C/10	389.00	12v DC	
HD3-ES-0LL-024C/10	389.00	24v DC	
HD3-ES-0LL-230A/10	425.00	230v AC	
HD3-ES-0LL-115A/10	425.00	115v AC	
HD3-ES-0ML-012C/10	389.00	12v DC	
HD3-ES-0ML-024C/10	389.00	24v DC	
HD3-ES-0ML-230A/10	425.00	230v AC	
HD3-ES-0ML-115A/10	425.00	115v AC	
HD3-ES-1LL-012C/10	389.00	12v DC	
HD3-ES-1LL-024C/10	389.00	24v DC	
HD3-ES-1LL-230A/10	425.00	230v AC	
HD3-ES-1LL-115A/10	425.00	115v AC	
HD3-ES-1LLb-012C/10	389.00	12v DC	
HD3-ES-1LLb-024C/10	389.00	24v DC	
HD3-ES-1LLb-230A/10	425.00	230v AC	
HD3-ES-1LLb-115A/10	425.00	115v AC	
HD3-ES-1ML-012C/10	389.00	12v DC	
HD3-ES-1ML-024C/10	389.00	24v DC	
HD3-ES-1ML-230A/10	425.00	230v AC	
HD3-ES-1ML-115A/10	425.00	115v AC	
HD3-ES-3ML-012C/10	389.00	12v DC	
HD3-ES-3ML-024C/10	389.00	24v DC	
HD3-ES-3ML-230A/10	425.00	230v AC	
HD3-ES-3ML-115A/10	425.00	115v AC	
HD3-ES-4ML-012C/10	455.00	12v DC	
HD3-ES-4ML-024C/10	455.00	24v DC	
HD3-ES-4ML-230A/10	492.00	230v AC	
HD3-ES-4ML-115A/10	492.00	115v AC	

aidro
MADE IN EUROPE

DIN plugs/accessories
on page 265-266



Cetop 3 Directional Control Valve - Lever Operated			
Part #	List Price \$	Spool Positioner	Diagram
HD3-LO-0C/10	708.00	Spring return	
HD3-LO-0D/10	708.00	Detent	
HD3-LO-1C/10	708.00	Spring return	
HD3-LO-1D/10	708.00	Detent	
HD3-LO-3C/10	708.00	Spring return	
HD3-LO-3D/10	708.00	Detent	
HD3-LO-4C/10	774.00	Spring return	
HD3-LO-4D/10	774.00	Detent	
HD3-LO-0LL/10	708.00	Spring return	
HD3-LO-0N/10	708.00	Detent	
HD3-LO-1LL/10	708.00	Spring return	
HD3-LO-1N/10	708.00	Detent	

aidro
MADE IN EUROPE



CETOP & MODULAR VALVES, SUBPLATES & MANIFOLDS

CETOP 3 PNEUMATIC PILOT OPERATED VALVES

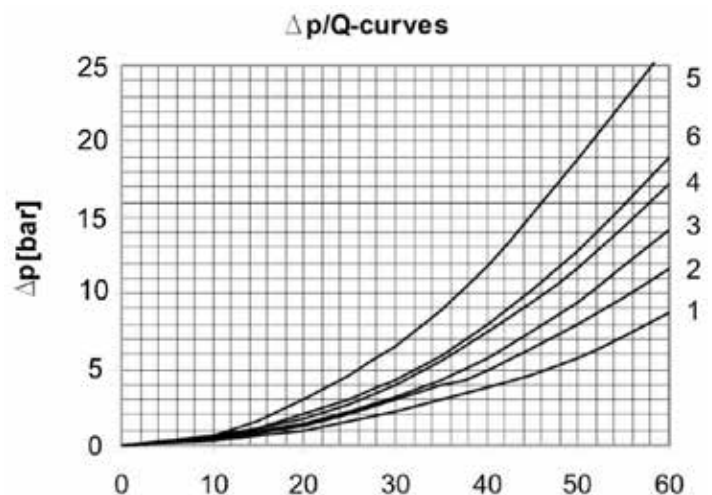
Cetop 3 Pneumatic Pilot Operated Valves

1/4" BSPP ports, maximum pressure on A,B,P 320 bar (see graph for flow rating)

	Part #	List Price \$	Pilot Pressure	Max Pressure Tank	Transition	Symbol	Diagram
NEW	RH06016FG	560.00	2-10 bar	160 bar	Closed	01	
NEW	RH06046FG	560.00	2-10 bar	160 bar	A+B to T	04	
NEW	RH06026FG	560.00	2-10 bar	160 bar	Open	02	
NEW	RH06006FG	560.00	2-10 bar	160 bar	Open	00	
NEW	RH06116FG	560.00	2-10 bar	160 bar	Open	11	



SYMBOL	CURVE				
	P > A	P > B	A > T	B > T	P > T
01	2	2	1	1	-
04	3	3	1	1	-
02	5	5	5	5	4
00	2	2	1	1	3
11	2	2	1	1	-



Cetop 3 Hydraulic Pilot Operated Valves

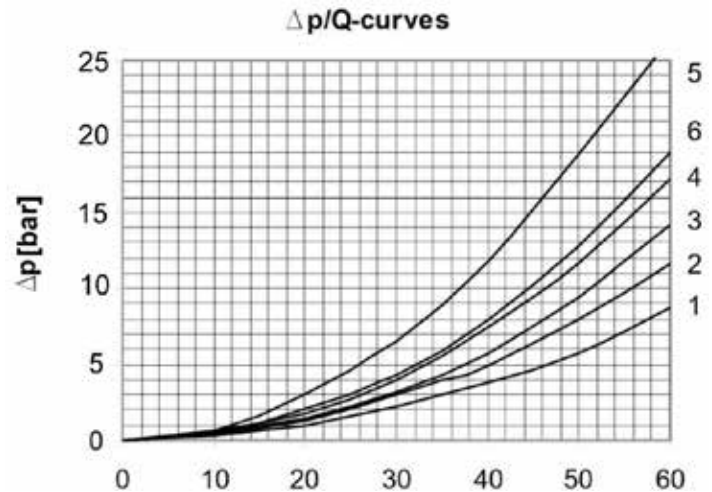
1/4" BSPP ports, maximum pressure on A,B,P 320 bar (see graph for flow rating)

	Part #	List Price \$	Pilot Pressure	Max Pressure Tank	Transition	Symbol	Diagram
NEW	RH06012F	600.00	10-14.8 bar	160 bar	Closed	01	
NEW	RH06042F	600.00	10-14.8 bar	160 bar	A+B to T	04	
NEW	RH06022F	600.00	10-14.8 bar	160 bar	Open	02	
NEW	RH06002F	600.00	10-14.8 bar	160 bar	Open	00	
NEW	RH06112F	600.00	10-14.8 bar	160 bar	Open	11	



MADE IN EUROPE

SYMBOL	CURVE				
	P > A	P > B	A > T	B > T	P > T
01	2	2	1	1	-
04	3	3	1	1	-
02	5	5	5	5	4
00	2	2	1	1	3
11	2	2	1	1	-



Cetop 3 Proportional Directional Control Valve - Solenoid Operated

	SOLENOID
Nominal Flow Rate	5, 16, 32 lpm
Maximum Nominal Pressure P,A,B	320 bar
Maximum Pressure on T Port	160 bar
Duty Cycle	100%
Bolts (single valve)	M5x45mm (tighten to 8Nm)

aidro
MADE IN EUROPE



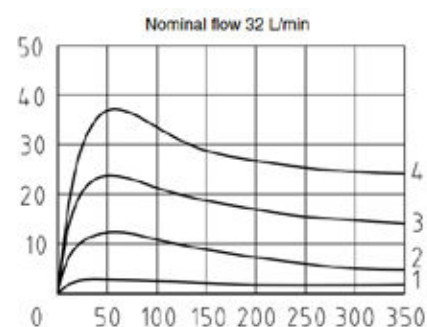
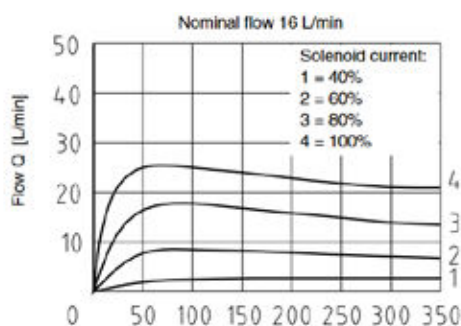
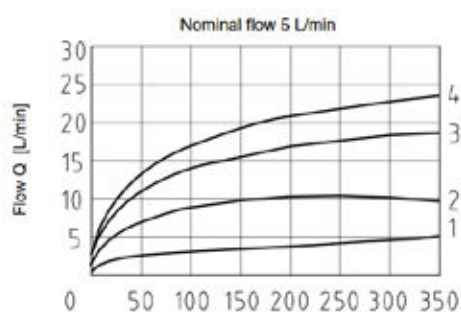
Valves type HD3-PS are operated by proportional solenoids that are rated for an average maximum power of 13.5 watt.

The values of nominal maximum current are for coils type:

- R2 (2.3): $I_{max} = 2.4amp$
- R3 (4.5): $I_{max} = 1.7amp$
- R4 (13.4): $I_{max} = 1.0amp$
- R5 (18.6): $I_{max} = 0.85amp$

Currents to hydraulic proportional valves are normally supplied by an electronic driver based on PWM mode of operation, and capable of full control of minimum and maximum values of current for drivers type UED.

(See following page for UEDs)



HYDRAULIC FLUID

Seals and materials used on standard HD3-* valves are fully compatible with hydraulic fluids of mineral base, upgrading with antifoaming and antioxidising agents.

The hydraulic fluid must be kept clear and filtered to ISO4406 class 19/17/14, or better, and used in a recommended viscosity range from 10cSt to 60cSt.

Cetop 3 Proportional Directional Control Valve - Solenoid Operated (P blocked, A,B,T connected)

Part #	List Price \$	Flow	Coil Voltage	Nominal Max. Current	Diagram
HD3-PS-305C-K-R2/10	1225.00	5 lpm, ΔP 10 bar	12v DC	2.5a / 2.3Ω	
HD3-PS-305C-K-R4/10	1225.00	5 lpm, ΔP 10 bar	24v DC	1.0a / 13.4Ω	
HD3-PS-3RC-K-R2/10	1134.00	16 lpm, ΔP 10 bar	12v DC	2.5a / 2.3Ω	
HD3-PS-3RC-K-R4/10	1134.00	16 lpm, ΔP 10 bar	24v DC	1.0a / 13.4Ω	
HD3-PS-3PC-K-R2/10	1134.00	32 lpm, ΔP 10 bar	12v DC	2.5a / 2.3Ω	
HD3-PS-3PC-K-R4/10	1134.00	32 lpm, ΔP 10 bar	24v DC	1.0a / 13.4Ω	
HD3-PS-305MLb-K-R2/10	1225.00	5 lpm, ΔP 10 bar	12v DC	2.5a / 2.3Ω	
HD3-PS-305MLb-K-R4/10	1225.00	5 lpm, ΔP 10 bar	24v DC	1.0a / 13.4Ω	
HD3-PS-3RMLb-K-R2/10	1134.00	16 lpm, ΔP 10 bar	12v DC	2.5a / 2.3Ω	
HD3-PS-3RMLb-K-R4/10	1134.00	16 lpm, ΔP 10 bar	24v DC	1.0a / 13.4Ω	
HD3-PS-3PMLb-K-R2/10	1134.00	32 lpm, ΔP 10 bar	12v DC	2.5a / 2.3Ω	
HD3-PS-3PMLb-K-R4/10	1134.00	32 lpm, ΔP 10 bar	24v DC	1.0a / 13.4Ω	
HD3-PS-305ML-K-R2/10	1225.00	5 lpm, ΔP 10 bar	12v DC	2.5a / 2.3Ω	
HD3-PS-305ML-K-R4/10	1225.00	5 lpm, ΔP 10 bar	24v DC	1.0a / 13.4Ω	
HD3-PS-3RML-K-R2/10	1134.00	16 lpm, ΔP 10 bar	12v DC	2.5a / 2.3Ω	
HD3-PS-3RML-K-R4/10	1134.00	16 lpm, ΔP 10 bar	24v DC	1.0a / 13.4Ω	
HD3-PS-3PML-K-R2/10	1134.00	32 lpm, ΔP 10 bar	12v DC	2.5a / 2.3Ω	
HD3-PS-3PML-K-R4/10	1134.00	32 lpm, ΔP 10 bar	24v DC	1.0a / 13.4Ω	

aidro
MADE IN EUROPE



Cetop 3 Proportional Directional Control Valve - Solenoid Operated (P,T,A,B blocked)

Part #	List Price \$	Flow	Coil Voltage	Nominal Max. Current	Diagram
HD3-PS-105C-K-R2/10	1225.00	5 lpm, ΔP 10 bar	12v DC	2.5a / 2.3Ω	
HD3-PS-105C-K-R4/10	1225.00	5 lpm, ΔP 10 bar	24v DC	1.0a / 13.4Ω	
HD3-PS-1RC-K-R2/10	1134.00	16 lpm, ΔP 10 bar	12v DC	2.5a / 2.3Ω	
HD3-PS-1RC-K-R4/10	1134.00	16 lpm, ΔP 10 bar	24v DC	1.0a / 13.4Ω	
HD3-PS-1PC-K-R2/10	1134.00	32 lpm, ΔP 10 bar	12v DC	2.5a / 2.3Ω	
HD3-PS-1PC-K-R4/10	1134.00	32 lpm, ΔP 10 bar	24v DC	1.0a / 13.4Ω	
HD3-PS-105MLb-K-R2/10	1225.00	5 lpm, ΔP 10 bar	12v DC	2.5a / 2.3Ω	
HD3-PS-105MLb-K-R4/10	1225.00	5 lpm, ΔP 10 bar	24v DC	1.0a / 13.4Ω	
HD3-PS-1RMLb-K-R2/10	1134.00	16 lpm, ΔP 10 bar	12v DC	2.5a / 2.3Ω	
HD3-PS-1RMLb-K-R4/10	1134.00	16 lpm, ΔP 10 bar	24v DC	1.0a / 13.4Ω	
HD3-PS-1PMLb-K-R2/10	1134.00	32 lpm, ΔP 10 bar	12v DC	2.5a / 2.3Ω	
HD3-PS-1PMLb-K-R4/10	1134.00	32 lpm, ΔP 10 bar	24v DC	1.0a / 13.4Ω	
HD3-PS-105ML-K-R2/10	1225.00	5 lpm, ΔP 10 bar	12v DC	2.5a / 2.3Ω	
HD3-PS-105ML-K-R4/10	1225.00	5 lpm, ΔP 10 bar	24v DC	1.0a / 13.4Ω	
HD3-PS-1RML-K-R2/10	1134.00	16 lpm, ΔP 10 bar	12v DC	2.5a / 2.3Ω	
HD3-PS-1RML-K-R4/10	1134.00	16 lpm, ΔP 10 bar	24v DC	1.0a / 13.4Ω	
HD3-PS-1PML-K-R2/10	1134.00	32 lpm, ΔP 10 bar	12v DC	2.5a / 2.3Ω	
HD3-PS-1PML-K-R4/10	1134.00	32 lpm, ΔP 10 bar	24v DC	1.0a / 13.4Ω	

aidro
MADE IN EUROPE

Optional Coils

Part #	List Price \$	Coil Voltage	Nominal Max. Current	Connection
BO3-12R2	68.00	12v DC	2.5a / 2.3Ω	DIN 43650A
BO3-12C	68.00	12v DC	2.7a / 4.4Ω	DIN 43650A
BO3-24R4	68.00	24v DC	1a / 13.4Ω	DIN 43650A
BO3-24C	68.00	24v DC	1.29a / 18.6Ω	DIN 43650A
BO3-12R2-D	93.00	12v DC	2.5a / 2.3Ω	DEUTSCH
BO3-12C-D	94.00	12v DC	2.7a / 4.4Ω	DEUTSCH
BO3-24R4-D	93.00	24v DC	1a / 13.4Ω	DEUTSCH
BO3-24C-D	94.00	24v DC	1.29a / 18.6Ω	DEUTSCH



BO3 (DIN)



BO3 (DEUTSCH)

Universal Electronic Driver

Part #	List Price \$	Voltage	Input Signal	Output Current	Mounting	Controls
UED-KA	1139.00	9-36v DC	0-5v, 0-10v, 4-20mA	0-3 amp	DIN 43650-A	1 solenoid
UED-D	2056.00	9-36v DC	0-5v, 0-10v, 4-20mA	0-3 amp	DIN rail (open)	1 or 2 solenoid

aidro
MADE IN EUROPE



UED-KA



UED-D

Independent adjustment
(ramp up/down)

Wide ramp time range

PVM output

Display/adjust current
& voltage

Wiring harnesses - see page 59



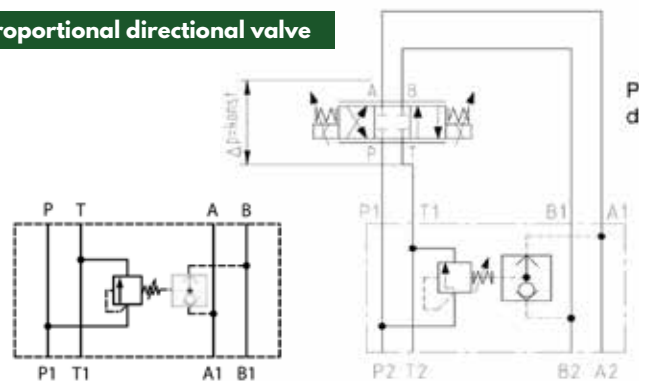
Pressure Compensator Valve

Part #	List Price \$	Description
AM3-LS-P3/20	831.00	3-way pressure compensator valve with load-sensing

aidro
MADE IN EUROPE



Proportional directional valve



Pressure compensator

Cetop 3 Directional Control Valve - Solenoid Operated

Recommended maximum flow 40 lpm @ 210 bar

Part #	List Price \$	Coil Voltage	Max Press Tank	Transition	Diagram
4WE6E-6X/EG12-N9K4-Z5L	307.00	12v DC	160 bar	Closed	E
4WE6E-6X/EG24-N9K4-Z5L	307.00	24v DC	160 bar	Closed	
4WE6E-6X/EG220-N9K4-Z5L	307.00	240v AC	160 bar	Closed	
4WE6H-6X/EG12-N9K4-Z5L	307.00	12v DC	160 bar	Open	H
4WE6H-6X/EG24-N9K4-Z5L	307.00	24v DC	160 bar	Open	
4WE6H-6X/EG220-N9K4-Z5L	307.00	240v AC	160 bar	Open	
4WE6J-6X/EG12-N9K4-Z5L	307.00	12v DC	160 bar	A+B to tank	J
4WE6J-6X/EG24-N9K4-Z5L	307.00	24v DC	160 bar	A+B to tank	
4WE6J-6X/EG220-N9K4-Z5L	307.00	240v AC	160 bar	A+B to tank	
4WE6G-6X/EG12-N9K4-Z5L	307.00	12v DC	160 bar	Open	G
4WE6G-6X/EG24-N9K4-Z5L	307.00	24v DC	160 bar	Open	
4WE6G-6X/EG220-N9K4-Z5L	307.00	240v AC	160 bar	Open	



Cetop 3 Directional Control Valve - Solenoid Operated

Recommended maximum flow 40 lpm @ 210 bar

Part #	List Price \$	Coil Voltage	Max Press Tank	Transition	Diagram
4WE6C-6X/EG12-N9K4-Z5L	254.00	12v DC	160 bar	Open	C
4WE6C-6X/EG24-N9K4-Z5L	254.00	24v DC	160 bar	Open	
4WE6C-6X/EG220-N9K4-Z5L	254.00	240v AC	160 bar	Open	
4WE6D-6X/EG12-N9K4-Z5L	254.00	12v DC	160 bar	Closed	D
4WE6D-6X/EG24-N9K4-Z5L	254.00	24v DC	160 bar	Closed	
4WE6D-6X/EG220-N9K4-Z5L	254.00	240v AC	160 bar	Closed	
4WE6HA-6X/EG12-N9K4-Z5L	254.00	12v DC	160 bar	Open	HA
4WE6HA-6X/EG24-N9K4-Z5L	254.00	24v DC	160 bar	Open	
4WE6HA-6X/EG220-N9K4-Z5L	254.00	240v AC	160 bar	Open	

More options on following page...

Cetop 3 Directional Control Valves - Solenoid Operated (...continued)

Recommended maximum flow 40 lpm @ 210 bar

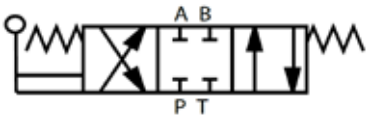
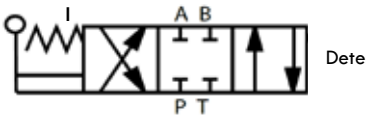


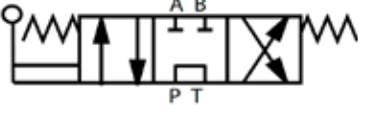
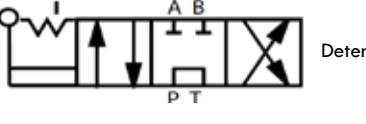


Part #	List Price \$	Coil Voltage	Max Press Tank	Transition	Diagram
4WE6EB-6X/EG12-N9K4-Z5L	254.00	12v DC	160 bar	Closed	
4WE6EB-6X/EG24-N9K4-Z5L	254.00	24v DC	160 bar	Closed	
4WE6EB-6X/EG220-N9K4-Z5L	254.00	240v AC	160 bar	Closed	
4WE6EA-6X/EG12-N9K4-Z5L	254.00	12v DC	160 bar	Closed	
4WE6EA-6X/EG24-N9K4-Z5L	254.00	24v DC	160 bar	Closed	
4WE6EA-6X/EG220-N9K4-Z5L	254.00	240v AC	160 bar	Closed	



Cetop 3 Directional Control Valve - Solenoid & Lever Operated

Part #	List Price \$	Coil Voltage	Max Press Tank	Transition	Diagram
4WE6C-EL-6X/EG12-N9K4-Z5L	469.00	12v DC	160 bar	Closed	
4WE6C-EL-6X/EG24-N9K4-Z5L	469.00	24v DC	160 bar	Closed	
4WE6C-EL-6X/EG220-N9K4-Z5L	469.00	240v AC	160 bar	Closed	
4WE6E-EL-6X/EG12-N9K4-Z5L	507.00	12v DC	160 bar	Closed	
4WE6E-EL-6X/EG24-N9K4-Z5L	507.00	24v DC	160 bar	Closed	
4WE6E-EL-6X/EG220-N9K4-Z5L	507.00	240v AC	160 bar	Closed	
4WE6J-EL-6X/EG12-N9K4-Z5L	507.00	12v DC	160 bar	A+B to tank	
4WE6J-EL-6X/EG24-N9K4-Z5L	507.00	24v DC	160 bar	A+B to tank	
4WE6J-EL-6X/EG220-N9K4-Z5L	507.00	240v AC	160 bar	A+B to tank	
4WE6G-EL-6X/EG12-N9K4-Z5L	507.00	12v DC	160 bar	Open	
4WE6G-EL-6X/EG24-N9K4-Z5L	507.00	24v DC	160 bar	Open	
4WE6G-EL-6X/EG220-N9K4-Z5L	507.00	240v AC	160 bar	Open	
4WE6H-EL-6X/EG12-N9K4-Z5L	507.00	12v DC	160 bar	Open	
4WE6H-EL-6X/EG24-N9K4-Z5L	507.00	24v DC	160 bar	Open	
4WE6H-EL-6X/EG220-N9K4-Z5L	507.00	240v AC	160 bar	Open	

Cetop 3 Directional Control Valve - Lever Operated

Part #	List Price \$	Spool Positioner	Max Press Tank	Transition	Diagram
4WMM6E51	314.00	Spring return	160 bar	Closed	
4WMM6E51F	314.00	Spring return detent	160 bar	Closed	
4WMM6H51	314.00	Spring return	160 bar	Open	
4WMM6J51	314.00	Spring return	160 bar	A+B to tank	
4WMM6G51	328.00	Spring return	160 bar	Open	
4WMM6G51F	344.00	Spring return detent	160 bar	Open	
4WMM6C51	314.00	Spring return	160 bar	Open	
4WMM6C51F	329.00	Spring return detent	160 bar	Open	



Cetop 5 Directional Control Valves - Solenoid Operated

ED Series (Cetop 5 with low power consumption coils)

	SOLENOID
Nominal Flow Rate	100 lpm
Maximum Recommended Flow	125 lpm
Maximum Nominal Pressure P,A,B	320 bar
Maximum Pressure on T Port	210 bar
Duty Cycle	100%
Bolts (single valve)	M6x35mm (tighten to 12Nm)

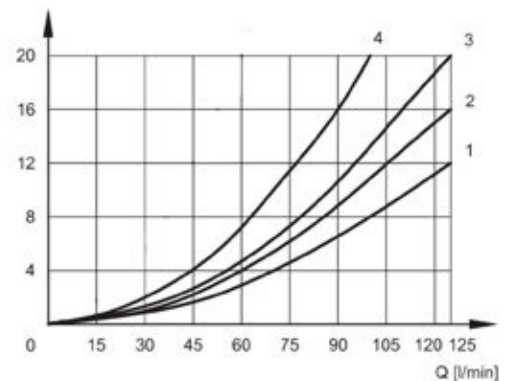


aidro
MADE IN EUROPE

Typical Diagrams

Typical Δp -Q curves for valves HD5-ED-* in standard configuration. Measured with mineral oil at 32mm²/s and T=40°C.

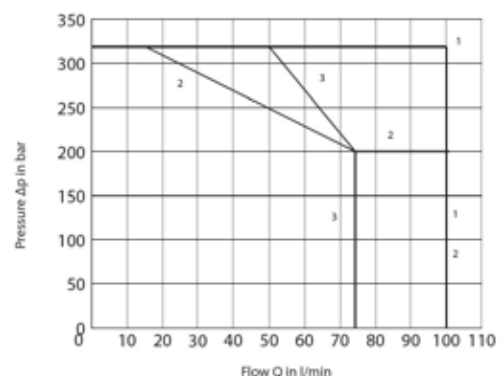
Spool	P-A	P-B	A-T	B-T	P-T
0C	1	1	1	1	1
1C	1	1	2	2	-
3C	1	1	1	1	-
4C	4	4	4	4	1
1LL	2	2	3	3	-
1LLb	2	2	3	3	-



Hydraulic Limit of Use

Δp -Q characteristics limits for safe use of HD5-ED-* solenoid operated valves. Measured with mineral oil at 32mm²/s and T=40°C.

Spool	Limit	Spool	Limit
1C	1	4ML	3
4C	3	1ML	1
0C	1	1MLb	1
3C	2	1LLb	1
1LL	1	4MLb	3
3ML	2		



HYDRAULIC FLUID

Seals and materials used on standard HD5-* valves are fully compatible with hydraulic fluids of mineral base, upgrading with antifoaming and antioxidising agents.

The hydraulic fluid must be kept clear and filtered to ISO4406 class 19/17/14, or better, and used in a recommended viscosity range from 10cSt to 60cSt.

CETOP & MODULAR VALVES, SUBPLATES & MANIFOLDS

CETOP 5 DIRECTIONAL CONTROL VALVES SOLENOID OPERATED

Cetop 5 Directional Control Valves - Solenoid Operated

ED Series (Cetop 5 with low power consumption coils)

Part #	List Price \$	Coil Voltage	Diagram
HD5-ED-0C-012C/10	762.00	12v DC	
HD5-ED-0C-024C/10	762.00	24v DC	
HD5-ED-0C-230A/10	838.00	230v AC	
HD5-ED-0C-115A/10	838.00	115v AC	
HD5-ED-1C-012C/10	762.00	12v DC	
HD5-ED-1C-024C/10	762.00	24v DC	
HD5-ED-1C-230A/10	838.00	230v AC	
HD5-ED-1C-115A/10	838.00	115v AC	
HD5-ED-3C-012C/10	762.00	12v DC	
HD5-ED-3C-024C/10	762.00	24v DC	
HD5-ED-3C-230A/10	838.00	230v AC	
HD5-ED-3C-115A/10	838.00	115v AC	
HD5-ED-4C-012C/10	908.00	12v DC	
HD5-ED-4C-024C/10	908.00	24v DC	
HD5-ED-4C-230A/10	982.00	230v AC	
HD5-ED-4C-115A/10	982.00	115v AC	

aidro
MADE IN EUROPE

Coil Power Consumption

Voltage	Amps
12v DC	2.4a
24v DC	1.2a
115v 50hz	0.26a
230v 50hz	0.14a



DIN plugs/accessories
on page 266-267

Cetop 5 Directional Control Valve - Solenoid Operated

ED Series (Cetop 5 with low power consumption coils)

Part #	List Price \$	Coil Voltage	Diagram
HD5-ED-0LL-012C/10	629.00	12v DC	
HD5-ED-0LL-024C/10	629.00	24v DC	
HD5-ED-0LL-230A/10	670.00	230v AC	
HD5-ED-0LL-115A/10	670.00	115v AC	
HD5-ED-0ML-012C/10	629.00	12v DC	
HD5-ED-0ML-024C/10	629.00	24v DC	
HD5-ED-0ML-230A/10	668.00	230v AC	
HD5-ED-0ML-115A/10	668.00	115v AC	
HD5-ED-1LL-012C/10	629.00	12v DC	
HD5-ED-1LL-024C/10	629.00	24v DC	
HD5-ED-1LL-230A/10	668.00	230v AC	
HD5-ED-1LL-115A/10	668.00	115v AC	
HD5-ED-1ML-012C/10	629.00	12v DC	
HD5-ED-1ML-024C/10	629.00	24v DC	
HD5-ED-1ML-230A/10	668.00	230v AC	
HD5-ED-1ML-115A/10	668.00	115v AC	
HD5-ED-3ML-012C/10	629.00	12v DC	
HD5-ED-3ML-024C/10	629.00	24v DC	
HD5-ED-3ML-230A/10	668.00	230v AC	
HD5-ED-3ML-115A/10	668.00	115v AC	
HD5-ED-4ML-012C/10	775.00	12v DC	
HD5-ED-4ML-024C/10	775.00	24v DC	
HD5-ED-4ML-230A/10	813.00	230v AC	
HD5-ED-4ML-115A/10	813.00	115v AC	

aidro
MADE IN EUROPE

Coil Power Consumption

Voltage	Amps
12v DC	2.4a
24v DC	1.2a
115v 50hz	0.26a
230v 50hz	0.14a



DIN plugs/accessories
on page 266-267

Cetop 5 Directional Control Valve - Solenoid Operated - High Power

ES Series (high power BO5 coils)

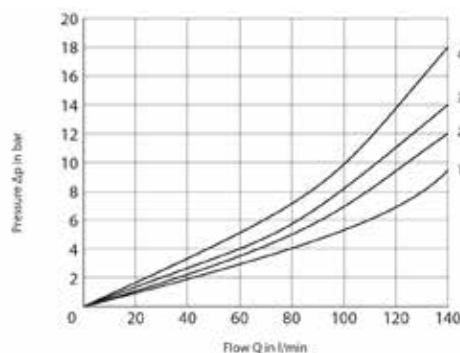
	SOLENOID
Nominal Flow Rate	120 lpm
Maximum Recommended Flow	See graphs
Maximum Nominal Pressure P,A,B	320 bar
Maximum Pressure on T Port	210 bar
Duty Cycle	100%
Bolts (single valve)	M6x35mm (tighten to 12Nm)



Typical Diagrams

Typical Δp -Q curves for valves HD5-ES-* in standard configuration. Measured with mineral oil at 32mm²/s and T=40°C.

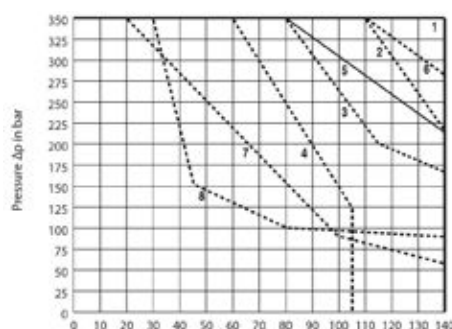
Spool	P-A	P-B	A-T	B-T	P-T
0C	1	1	2	2	1
1C	1	1	2	2	-
3C	1	1	2	2	-
4C	3	3	4	4	1
OLL	1	1	1	3	-
1LL	1	1	2	2	-
OML	-	1	2	-	1
1ML	-	1	2	-	-
3ML	-	1	2	-	-
4ML	3	-	-	4	1



Hydraulic Limit of Use

Δp -Q characteristics limits for safe use of HD5-ES-* solenoid operated valves. Measured with mineral oil at 32mm²/s and T=40°C.

Spool	Limit	Spool	Limit
0C	1	4C	3
1C	1	OLL	2
OML	1	1LL	2
1ML	1	1LLb	2
3C	5	4MLb	3
3ML	5		



HYDRAULIC FLUID

Seals and materials used on standard HD5-* valves are fully compatible with hydraulic fluids of mineral base, upgrading with antifoaming and antioxidising agents.

The hydraulic fluid must be kept clear and filtered to ISO4406 class 19/17/14, or better, and used in a recommended viscosity range from 10cSt to 60cSt.

Cetop 5 Directional Control Valve - Solenoid Operated - High Power

ES Series (high power BO5 coils)

Part #	List Price \$	Coil Voltage	Diagram
HD5-ES-0C-012C/20	913.00	12v DC	H
HD5-ES-0C-024C/20	913.00	24v DC	
HD5-ES-0C-230A/20	987.00	230v AC	
HD5-ES-0C-115A/20	987.00	115v AC	
HD5-ES-1C-012C/20	913.00	12v DC	E
HD5-ES-1C-024C/20	913.00	24v DC	
HD5-ES-1C-230A/20	987.00	230v AC	
HD5-ES-1C-115A/20	987.00	115v AC	
HD5-ES-3C-012C/20	883.00	12v DC	J
HD5-ES-3C-024C/20	883.00	24v DC	
HD5-ES-3C-230A/20	985.00	230v AC	
HD5-ES-3C-115A/20	985.00	115v AC	
HD5-ES-4C-012C/20	1066.00	12v DC	G
HD5-ES-4C-024C/20	1066.00	24v DC	
HD5-ES-4C-230A/20	1139.00	230v AC	
HD5-ES-4C-115A/20	1139.00	115v AC	

aidro
MADE IN EUROPE

Coil Power Consumption

Voltage	Amps
12v DC	3.17a
24v DC	1.73a
115v 50/60hz	0.40a
230v 50/60hz	0.20a



DIN plugs/accessories
on page 266-267

CETOP & MODULAR VALVES, SUBPLATES & MANIFOLDS

CETOP 5 DIRECTIONAL CONTROL VALVES SOLENOID OPERATED

Cetop 5 Directional Control Valve - Solenoid Operated - High Power

ES Series (high power BO5 coils)

Part #	List Price \$	Coil Voltage	Diagram
HD5-ES-OLL-012C/20	702.00	12v DC	
HD5-ES-OLL-024C/20	702.00	24v DC	
HD5-ES-OLL-230A/20	739.00	230v AC	
HD5-ES-OLL-115A/20	739.00	115v AC	
HD5-ES-0ML-012C/20	702.00	12v DC	
HD5-ES-0ML-024C/20	702.00	24v DC	
HD5-ES-0ML-230A/20	739.00	230v AC	
HD5-ES-0ML-115A/20	739.00	115v AC	
HD5-ES-1LL-012C/20	702.00	12v DC	
HD5-ES-1LL-024C/20	702.00	24v DC	
HD5-ES-1LL-230A/20	739.00	230v AC	
HD5-ES-1LL-115A/20	739.00	115v AC	
HD5-ES-1ML-012C/20	702.00	12v DC	
HD5-ES-1ML-024C/20	702.00	24v DC	
HD5-ES-1ML-230A/20	739.00	230v AC	
HD5-ES-1ML-115A/20	739.00	115v AC	
HD5-ES-3ML-012C/20	702.00	12v DC	
HD5-ES-3ML-024C/20	702.00	24v DC	
HD5-ES-3ML-230A/20	739.00	230v AC	
HD5-ES-3ML-115A/20	739.00	115v AC	
HD5-ES-4ML-012C/20	854.00	12v DC	
HD5-ES-4ML-024C/20	854.00	24v DC	
HD5-ES-4ML-230A/20	892.00	230v AC	
HD5-ES-4ML-115A/20	892.00	115v AC	

aidro
MADE IN EUROPE

Coil Power Consumption

Voltage	Amps
12v DC	3.17a
24v DC	1.73a
115v 50/60hz	0.40a
230v 50/60hz	0.20a

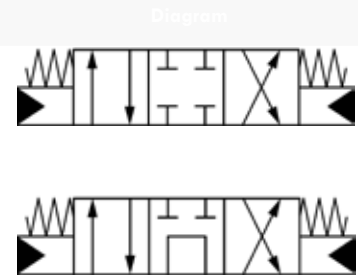


DIN plugs/accessories
on page 266-267

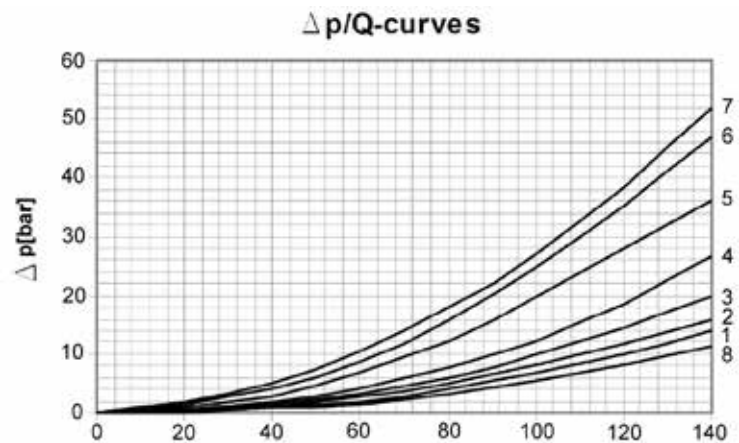
Cetop 5 Pneumatic Pilot Operated Valves

1/4" BSPP ports, maximum pressure on A,B,P 320 bar (see graph for flow rating)

Part #	List Price \$	Pilot Pressure	Max Pressure Tank	Transition	Symbol
NEW RH10016FG	700.00	10-14.8 bar	160 bar	Closed	01
NEW RH10026FG	700.00	10-14.8 bar	160 bar	A+B to T	04



SYMBOL	CURVE				
	P > A	P > B	A > T	B > T	P > T
01	3	3	1	1	-
04	6	6	5	5	4



Cetop 5 Directional Control Valve - Solenoid Operated

Recommended maximum flow 80 lpm @ 210 bar

Part #	List Price \$	Coil Voltage	Max Press Tank	Transition	Diagram
4WE10E-3X/EG12-N9K4-Z5L	468.00	12v DC	160 bar	Closed	
4WE10E-3X/EG24-N9K4-Z5L	468.00	24v DC	160 bar	Closed	
4WE10E-3X/EG220-N9K4-Z5L	468.00	240v AC	160 bar	Closed	
4WE10H-3X/EG12-N9K4-Z5L	468.00	12v DC	160 bar	Open	
4WE10H-3X/EG24-N9K4-Z5L	468.00	24v DC	160 bar	Open	
4WE10H-3X/EG220-N9K4-Z5L	468.00	240v AC	160 bar	Open	
4WE10J-3X/EG12-N9K4-Z5L	468.00	12v DC	160 bar	A+B to tank	
4WE10J-3X/EG24-N9K4-Z5L	468.00	24v DC	160 bar	A+B to tank	
4WE10J-3X/EG220-N9K4-Z5L	468.00	240v AC	160 bar	A+B to tank	
4WE10G-3X/EG12-N9K4-Z5L	468.00	12v DC	160 bar	Open	
4WE10G-3X/EG24-N9K4-Z5L	468.00	24v DC	160 bar	Open	
4WE10G-3X/EG220-N9K4-Z5L	468.00	240v AC	160 bar	Open	



Single Coil table on following page

Cetop 5 Directional Control Valve - Solenoid Operated

Recommended maximum flow 80 lpm @ 210 bar

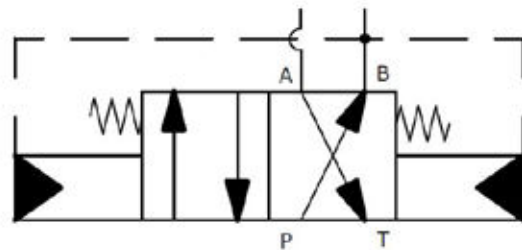
Part #	List Price \$	Coil Voltage	Max Press Tank	Transition	Diagram
4WE10C-3X/EG12-N9K4-Z5L	387.00	12v DC	160 bar	Open	
4WE10C-3X/EG24-N9K4-Z5L	387.00	24v DC	160 bar	Open	
4WE10C-3X/EG220-N9K4-Z5L	387.00	240v AC	160 bar	Open	
4WE10D-3X/EG12-N9K4-Z5L	387.00	12v DC	160 bar	Closed	
4WE10D-3X/EG24-N9K4-Z5L	387.00	24v DC	160 bar	Closed	
4WE10D-3X/EG220-N9K4-Z5L	387.00	240v AC	160 bar	Closed	
4WE10HA-3X/EG12-N9K4-Z5L	387.00	12v DC	160 bar	Open	
4WE10HA-3X/EG24-N9K4-Z5L	387.00	24v DC	160 bar	Open	
4WE10HA-3X/EG220-N9K4-Z5L	387.00	240v AC	160 bar	Open	
4WE10EB-3X/EG12-N9K4-Z5L	387.00	12v DC	160 bar	Closed	
4WE10EB-3X/EG24-N9K4-Z5L	387.00	24v DC	160 bar	Closed	
4WE10EB-3X/EG220-N9K4-Z5L	387.00	240v AC	160 bar	Closed	
4WE10EA-3X/EG12-N9K4-Z5L	387.00	12v DC	160 bar	Closed	
4WE10EA-3X/EG24-N9K4-Z5L	387.00	24v DC	160 bar	Closed	
4WE10EA-3X/EG220-N9K4-Z5L	387.00	240v AC	160 bar	Closed	



Auto-Cycling Valve

Part #	List Price \$	Description
ES610-41	1094.00	Cetop 3 autocycling valve
ES610-42	1288.00	Cetop 5 autocycling valve

MADE IN EUROPE



Cetop 7 Directional Control Valve Pilot Operated via Solenoid Valve - Standard Internal Pilot/Drain

Recommended maximum flow 200 lpm @ 350 bar

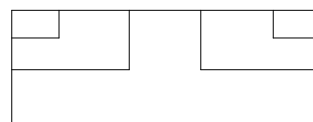
Part #	List Price \$	Coil Voltage	Max Press Tank	Transition	Diagram
4WEH16E-7X/6EG12-N9ETK4-Z5L	1033.00	12v DC	100 bar	Closed	E
4WEH16E-7X/6EG24-N9ETK4-Z5L	1033.00	24v DC	100 bar	Closed	
4WEH16E-7X/6EG220-N9ETK4-Z5L	1033.00	240v AC	100 bar	Closed	
4WEH16H-7X/6EG12-N9ETK4-Z5L	1033.00	12v DC	100 bar	Open	H
4WEH16H-7X/6EG24-N9ETK4-Z5L	1033.00	24v DC	100 bar	Open	
4WEH16H-7X/6EG220-N9ETK4-Z5L	1033.00	240v AC	100 bar	Open	
4WEH16J-7X/6EG12-N9ETK4-Z5L	1033.00	12v DC	100 bar	A+B to tank	J
4WEH16J-7X/6EG24-N9ETK4-Z5L	1033.00	24v DC	100 bar	A+B to tank	
4WEH16J-7X/6EG220-N9ETK4-Z5L	1033.00	240v AC	100 bar	A+B to tank	
4WEH16G-7X/6EG12-N9ETK4-Z5L	1033.00	12v DC	100 bar	Open	G
4WEH16G-7X/6EG24-N9ETK4-Z5L	1033.00	24v DC	100 bar	Open	
4WEH16G-7X/6EG220-N9ETK4-Z5L	1033.00	240v AC	100 bar	Open	
4WEH16H-7X/6EG12-N9ETK4-Z5L	1033.00	12v DC	100 bar	Open	C
4WEH16H-7X/6EG24-N9ETK4-Z5L	1033.00	24v DC	100 bar	Open	
4WEH16H-7X/6EG220-N9ETK4-Z5L	1033.00	240v AC	100 bar	Open	
4WEH16D-7X/6EG12-N9K4-Z5L	881.00	12v DC	100 bar	Closed	D
4WEH16D-7X/6EG24-N9ETK4-Z5L	881.00	24v DC	100 bar	Closed	
4WEH16D-7X/6EG220-N9ETK4-Z5L	881.00	240v AC	100 bar	Closed	

Note: external pilot/drain option available - additional cost \$60.00

Cetop 7 Subplates

Part #	List Price \$	Stations	Function	Ports	Material
G172/01	305.00	1	Rear Ports	3/4" BSPP	Steel
G174/01	418.00	1	Rear Ports	1" BSPP	Steel

Coil options on page 265



Cetop 8 Directional Control Valve Pilot Operated via Solenoid Valve - Standard Internal Pilot/Drain

Recommended maximum flow 600 lpm @ 350 bar

Part #	List Price \$	Coil Voltage	Max Press Tank	Transition	Diagram
NEW 4WEH25E-7X/6EG12-N9ETK4-Z5L	1309.00	12v DC	100 bar	Closed	E
NEW 4WEH25E-7X/6EG24-N9ETK4-Z5L	1309.00	24v DC	100 bar	Closed	
NEW 4WEH25E-7X/6EG220-N9ETK4-Z5L	1309.00	240v AC	100 bar	Closed	
NEW 4WEH25H-7X/6EG12-N9ETK4-Z5L	1309.00	12v DC	100 bar	Open	H
NEW 4WEH25H-7X/6EG24-N9ETK4-Z5L	1309.00	24v DC	100 bar	Open	
NEW 4WEH25H-7X/6EG220-N9ETK4-Z5L	1309.00	240v AC	100 bar	Open	
NEW 4WEH25J-7X/6EG12-N9ETK4-Z5L	1309.00	12v DC	100 bar	A+B to tank	J
NEW 4WEH25J-7X/6EG24-N9ETK4-Z5L	1309.00	24v DC	100 bar	A+B to tank	
NEW 4WEH25J-7X/6EG220-N9ETK4-Z5L	1309.00	240v AC	100 bar	A+B to tank	
NEW 4WEH25G-7X/6EG12-N9ETK4-Z5L	1309.00	12v DC	100 bar	Open	G
NEW 4WEH25G-7X/6EG24-N9ETK4-Z5L	1309.00	24v DC	100 bar	Open	
NEW 4WEH25G-7X/6EG220-N9ETK4-Z5L	1309.00	240v AC	100 bar	Open	
NEW 4WEH25C-7X/6EG12-N9ETK4-Z5L	1209.00	12v DC	100 bar	Open	C
NEW 4WEH25C-7X/6EG24-N9ETK4-Z5L	1209.00	24v DC	100 bar	Open	
NEW 4WEH25C-7X/6EG220-N9ETK4-Z5L	1209.00	240v AC	100 bar	Open	
NEW 4WEH25D-7X/6EG12-N9ETK4-Z5L	1209.00	12v DC	100 bar	Closed	D
NEW 4WEH25D-7X/6EG24-N9ETK4-Z5L	1209.00	24v DC	100 bar	Closed	
NEW 4WEH25D-7X/6EG220-N9ETK4-Z5L	1209.00	240v AC	100 bar	Closed	

Note: external pilot/drain option available - additional cost \$60.00

Cetop 8 Subplates

Part #	List Price \$	Function	Ports	Material
NEW DGSP-08G-16	395.00	Rear Port	1" BSPP	Steel
NEW DGSP-08G-16E	395.00	Side Port	1" BSPP	Steel



Coil options on page 265

Valve Coils (4DWG6)

Part #	List Price \$	Voltage	Amp	Core Size	Length	Connector	Valve
COIL-06-12VDC	79.00	12v DC	2.66a	23.5mm	50.7mm	DIN 43650-A	4DWG6
COIL-06-24VDC	79.00	24v DC	1.45a	23.5mm	50.7mm	DIN 43650-A	4DWG6
COIL-06-48VDC	79.00	48v DC	0.7a	23.5mm	50.7mm	DIN 43650-A	4DWG6
COIL-06-110VAC	79.00	110v AC	0.35a	23.5mm	50.7mm	DIN 43650-A	4DWG6
COIL-06-220VAC	79.00	220v AC	0.17a	23.5mm	50.7mm	DIN 43650-A	4DWG6

Valve Coils (4DWG10)

Part #	List Price \$	Voltage	Amp	Core Size	Length	Connector	Valve
COIL-10-12VDC	103.00	12v DC	4.0a	31.8mm	75.2mm	DIN 43650-A	4DWG10
COIL-10-24VDC	103.00	24v DC	2.0a	31.8mm	75.2mm	DIN 43650-A	4DWG10
COIL-10-110VAC	103.00	110v AC	0.5a	31.8mm	75.2mm	DIN 43650-A	4DWG10
COIL-10-220VAC	103.00	220v AC	0.25a	31.8mm	75.2mm	DIN 43650-A	4DWG10

COIL-6



COIL-10



Valve Coils (HD5-ES High Power)

Part #	List Price \$	Voltage	Amp	Core Size	Length	Connector	Valve
BO5-12C	157.00	12v DC	3.17	31mm	73.5	DIN 43650-A	HD5-ES
BO5-24C	157.00	24v DC	1.73	31mm	73.5	DIN 43650-A	HD5-ES
BO5-48A	157.00	48v AC	0.865	31mm	73.5	DIN 43650-A	HD5-ES
BO5-115C	196.00	115v AC	0.40	31mm	73.5	DIN 43650-A	HD5-ES
BO5-230C	196.00	230v AC	0.20	31mm	73.5	DIN 43650-A	HD5-ES

Valve Coils (HD3-ES / HD5-ED Low Power)

Part #	List Price \$	Voltage	Amp	Core Size	Length	Connector	Valve
BO3-12C	68.00	12v DC	2.5	22 mm	52 mm	DIN 43650-A	HD3-ES / HD5-ED
BO3-24C	68.00	24v DC	1.29	22 mm	52 mm	DIN 43650-A	HD3-ES / HD5-ED
BO3-48C	68.00	48v AC	0.6	22 mm	52 mm	DIN 43650-A	HD3-ES / HD5-ED
BO3-115A	104.00	115v AC	0.26	22 mm	52 mm	DIN 43650-A	HD3-ES / HD5-ED
BO3-230A	104.00	230v AC	0.14	22 mm	52 mm	DIN 43650-A	HD3-ES / HD5-ED

aidro
MADE IN EUROPE



BO5



B03

HD3-ES / HD5-ED Spare Parts & Bolt Kits

Part #	List Price \$	Description
KIT-03K	69.00	Manual override nut
T03-T	224.00	Soft shift kit
TAP-03-OR	52.00	Nut & spring kit
HD3-01-BK	7.00	Cetop 3 - 1 section bolt kit
HD3-02-BK	23.00	Cetop 3 - 2 section bolt kit
HD3-03-BK	32.00	Cetop 3 - 3 section bolt kit
HD5-01-BK-ED	7.00	Cetop 5 - 1 section bolt kit (ED Series)
HD5-02-BK-ED	14.00	Cetop 5 - 2 section bolt kit (ED Series)
HD5-03-BK-ED	25.00	Cetop 5 - 3 section bolt kit (ED Series)

HD5-ES Spare Parts & Bolt Kits

Part #	List Price \$	Description
WK-05	43.00	Manual override nut
TAP-05/20	60.00	Nut & spring kit
HD5-01-BK-ES	7.00	Cetop 5 - 1 section bolt kit (ES Series)
HD5-02-BK-ES	14.00	Cetop 5 - 2 section bolt kit (ES Series)
HD5-03-BK-ES	25.00	Cetop 5 - 3 section bolt kit (ES Series)



Manual Override Nut (4DWG6)

Part #	List Price \$	Description	Valve
4DWE6-DT-M-S	42.00	Fits 14mm solenoid thread	4DWG6
4DWE6-DT-M-L	42.00	Fits 22mm solenoid thread	4DWG6



CETOP & MODULAR VALVES, SUBPLATES & MANIFOLDS

DIN PLUGS

DIN Plugs 43650 Form B IND 2-Pole + PE

Part #	List Price \$	Connector	Circuits	Pre-wired Length	Integrated Gasket	Protection	Voltage DC	Voltage AC	Max. Current
NEW DP-IP65-AC/DC-IND	21.00	Form B IND	Red LED + varistor	-	No	IP65	1-250v	1-250v	10a @40°C
NEW DP-IP67-AC/DC-IND-3M	42.00	Form B IND	Red LED + varistor	3 meters	Yes	IP67	10-50v	-	10a @40°C

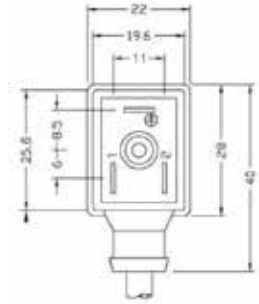
MADE IN EUROPE



DP-IP67-AC/DC-IND-3M
Pre-wired 3m lead



DP-IP65-AC/DC-IND



DIN Plugs 43650 Form A 2-Pole + PE

Part #	List Price \$	Connector	Circuits	Pre-wired Length	Integrated Gasket	Protection	Voltage DC	Voltage AC	Max. Current
DP-IP67-AC/DC-250	21.00	Form A	Red LED + varistor	-	No	IP65	1-250v	1-250v	10a @40°C
DP-IP67-AC/DC-38	21.00	Form A	Red LED + varistor	-	No	IP65	1-38v	1-30v	10a @40°C
DP-IP67-AC/DC-3M	42.00	Form A	Red LED + varistor	3 meters	Yes	IP67	1-42v	10-30v	10a @40°C
DP-LED-AC	13.00	Form A	Red LED	-	No	IP64	-	1-250v	10a @40°C
DP-LED-DC	13.00	Form A	Red LED	-	No	IP64	1-42v	-	10a @40°C
DP-REC-LV	35.00	Form A	Red LED + rectifier	-	No	IP65	-	10-50v	1.4a @40°C
DP-REC	35.00	Form A	Red LED + rectifier	-	No	IP65	-	70-250v	1.4a @40°C

MADE IN EUROPE



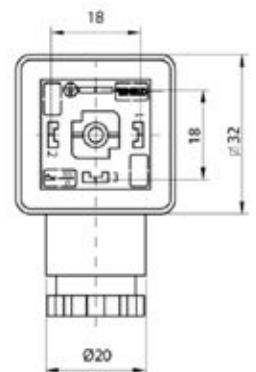
DP-IP67-AC/DC-3M
Pre-wired 3m lead



DP-IP67-AC/DC-250
DP-IP67-AC/DC-38
DP-REC-LV
DP-REC

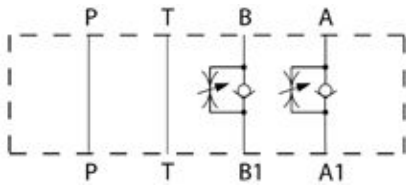


DP-LED-AC
DP-LED-DC

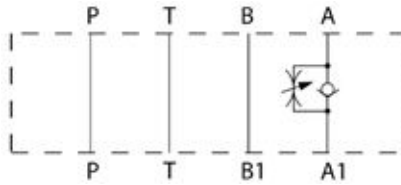


Flow Control Modular Valve (Meter In)

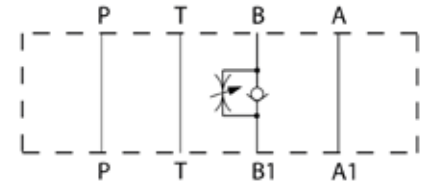
Part #	List Price \$	Function	Maximum Recommended Flow Rate	Maximum Nominal Pressure
AM3-FX-AB/10	363.00	Flow control on A & B, meter in	60 lpm	320 bar
AM3-FX-A/10	328.00	Flow control on A, meter in	60 lpm	320 bar
AM3-FX-B/10	328.00	Flow control on B, meter in	60 lpm	320 bar



FX-AB



FX-A



FX-B

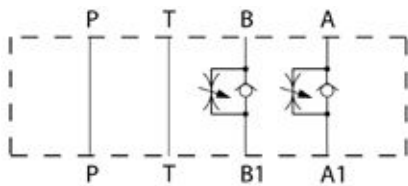


*Bolt kits required
See page 266*

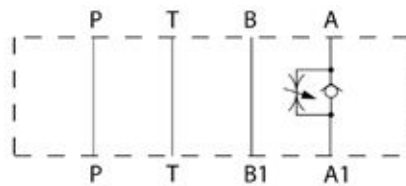
aidro
MADE IN EUROPE

Flow Control Modular Valve (Meter Out)

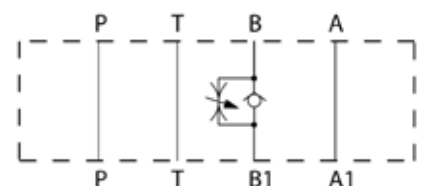
Part #	List Price \$	Function	Maximum Recommended Flow Rate	Maximum Nominal Pressure
AM3-FC-AB/10	363.00	Flow control on A & B, meter out	60 lpm	320 bar
AM3-FC-A/10	328.00	Flow control on A, meter out	60 lpm	320 bar
AM3-FC-B/10	328.00	Flow control on B, meter out	60 lpm	320 bar



FC-AB



FC-A



FC-B



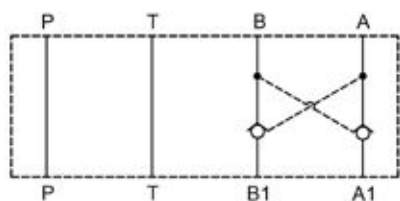
*Bolt kits required
See page 266*

aidro
MADE IN EUROPE

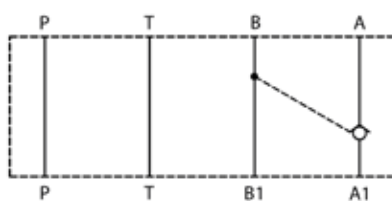
CETOP 3 MODULAR VALVES

Pilot Check Modular Valve

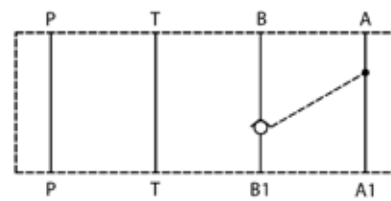
Part #	List Price \$	Function	Maximum Recommended Flow Rate	Maximum Nominal Pressure
AM3-CP-AB/10	366.00	Pilot check on A & B	60 lpm	320 bar
AM3-CP-A/10	339.00	Pilot check on A	60 lpm	320 bar
AM3-CP-B/10	339.00	Pilot check on B	60 lpm	320 bar



CP-AB



CP-A



CP-B

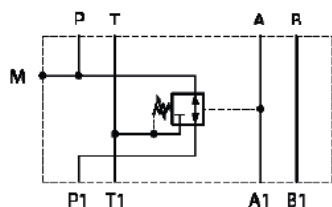


aidro
MADE IN EUROPE

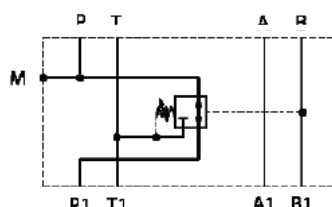
Bolt kits required
See page 266

Pressure Reducing Modular Valve (No Check)

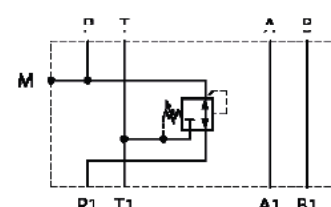
Part #	List Price \$	Function	Pressure Reducing Range	Maximum Recommended Flow Rate	Maximum Nominal Pressure
AM3-RO-P-32/10	615.00	Pressure reducing in P	3-35 bar	60 lpm	320 bar
AM3-RO-A-32/10	659.00	Pressure reducing in A	3-35 bar	60 lpm	320 bar
AM3-RO-B-32/10	659.00	Pressure reducing in B	3-35 bar	60 lpm	320 bar
AM3-RO-P-6.3/10	615.00	Pressure reducing in P	10-70 bar	60 lpm	320 bar
AM3-RO-A-6.3/10	659.00	Pressure reducing in A	10-70 bar	60 lpm	320 bar
AM3-RO-B-6.3/10	659.00	Pressure reducing in B	10-70 bar	60 lpm	320 bar
AM3-RO-P-12.5/10	615.00	Pressure reducing in P	30-140 bar	60 lpm	320 bar
AM3-RO-A-12.5/10	659.00	Pressure reducing in A	30-140 bar	60 lpm	320 bar
AM3-RO-B-12.5/10	659.00	Pressure reducing in B	30-140 bar	60 lpm	320 bar
AM3-RO-P-25/10	615.00	Pressure reducing in P	60-280 bar	60 lpm	320 bar
AM3-RO-A-25/10	659.00	Pressure reducing in A	60-280 bar	60 lpm	320 bar
AM3-RO-B-25/10	659.00	Pressure reducing in B	60-280 bar	60 lpm	320 bar



RO-A



RO-B



RO-P

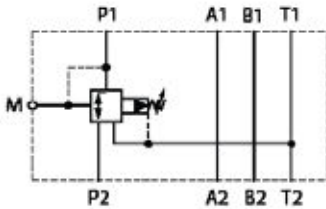


aidro
MADE IN EUROPE

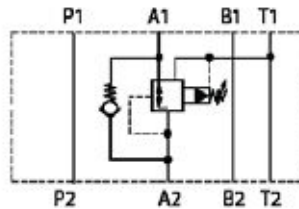
Bolt kits required
See page 266

Pressure Reducing Modular Valve (Pilot Operated)

Part #	List Price \$	Function	Pressure Range	Max Recommended Flow Rate	Max Nominal Pressure
AM3-RP-P-20/10	650.00	Pressure reducing in P	30-140 bar	60 lpm	320 bar
AM3-RP-AC-20/10	691.00	Pressure reducing in A with check	30-140 bar	60 lpm	320 bar
HD3-02-RP-BK	23.00		2 section bolt kit		
HD3-03-RP-BK	32.00		3 section bolt kit		



RP-P



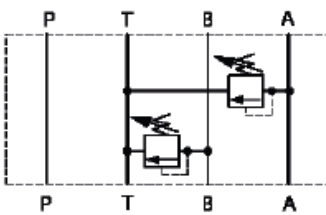
RP-AC (w/ check)



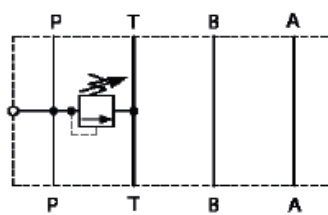
aidro
MADE IN EUROPE

Direct Acting Pressure Relief Modular Valves

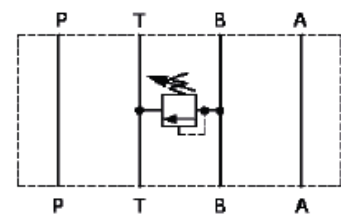
Part #	List Price \$	Function	Pressure Range	Maximum Recommended Flow Rate	Maximum Nominal Pressure
AM3-MO-P-10/10	363.00	Direct acting relief on P	25-125 bar	60 lpm	320 bar
AM3-MO-B-10/10	363.00	Direct acting relief on B	25-125 bar	60 lpm	320 bar
AM3-MO-BA-10/10	527.00	Direct acting relief on A & B	25-125 bar	60 lpm	320 bar
AM3-MO-P-20/10	363.00	Direct acting relief on P	40-250 bar	60 lpm	320 bar
AM3-MO-B-20/10	363.00	Direct acting relief on B	40-250 bar	60 lpm	320 bar
AM3-MO-BA-20-20/10	527.00	Direct acting relief on A & B	40-250 bar	60 lpm	320 bar
AM3-MO-P-32/10	363.00	Direct acting relief on P	100-320 bar	60 lpm	320 bar
AM3-MO-B-32/10	363.00	Direct acting relief on B	100-320 bar	60 lpm	320 bar
AM3-MO-BA-32-32/10	527.00	Direct acting relief on A & B	100-320 bar	60 lpm	320 bar



MO-BA



MO-P



MO-B

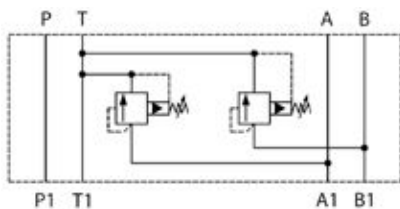


Bolt kits required
See page 266

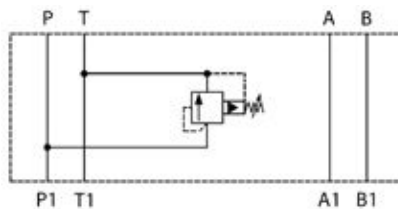
aidro
MADE IN EUROPE

Pilot Operated Pressure Relief Modular Valves

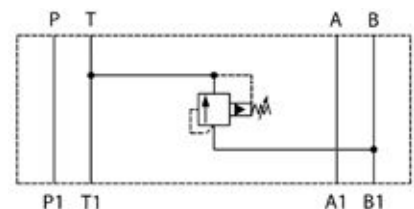
Part #	List Price \$	Function	Pressure Range	Maximum Recommended Flow Rate	Maximum Nominal Pressure
AM3-MP-P-6.3/10	526.00	Pilot operated relief on P	10-70 bar	60 lpm	320 bar
AM3-MP-B-6.3/10	526.00	Pilot operated relief on B	10-70 bar	60 lpm	320 bar
AM3-MP-BA-6.3-6.3/10	851.00	Pilot operated relief on A & B	10-70 bar	60 lpm	320 bar
AM3-MP-P-12.5/10	526.00	Pilot operated relief on P	10-140 bar	60 lpm	320 bar
AM3-MP-B-12.5/10	526.00	Pilot operated relief on B	10-140 bar	60 lpm	320 bar
AM3-MP-BA-12.5-12.5/10	851.00	Pilot operated relief on A & B	10-140 bar	60 lpm	320 bar
AM3-MP-P-20/10	526.00	Pilot operated relief on P	20-210 bar	60 lpm	320 bar
AM3-MP-B-20/10	526.00	Pilot operated relief on B	20-210 bar	60 lpm	320 bar
AM3-MP-BA-20-20/10	851.00	Pilot operated relief on A & B	20-210 bar	60 lpm	320 bar
AM3-MP-P-32/10	526.00	Pilot operated relief on P	20-320 bar	60 lpm	320 bar
AM3-MP-B-32/10	526.00	Pilot operated relief on B	20-320 bar	60 lpm	320 bar
AM3-MP-BA-32-32/10	851.00	Pilot operated relief on A & B	20-320 bar	60 lpm	320 bar



MP-BA



MP-P



MP-B

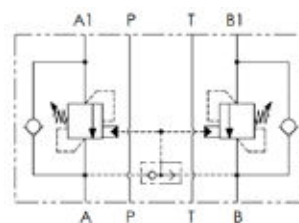


aidro
MADE IN EUROPE

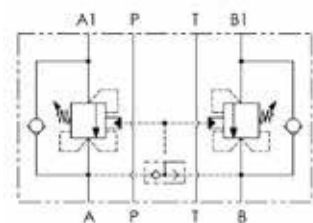
Cetop 3 Counterbalance Modular Valves

Part #	List Price \$	Maximum Pressure	Centre	Maximum Flow	Ratio
VBCS0601S	460.00	210 bar	Open	40 lpm	1:4.25
VBCS0602S	460.00	350 bar	Open	40 lpm	1:4.25
VBCT0601S	534.00	210 bar	Closed	40 lpm	1:4.25
VBCT0602S	534.00	350 bar	Closed	40 lpm	1:4.25

OLEOWEB
MADE IN EUROPE



VBCS

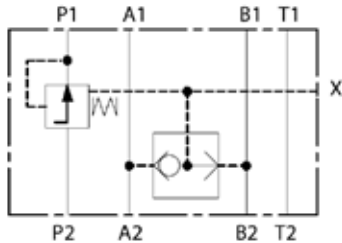


VBCT

2-Way Pressure Compensator Modular Valve (Meter In)

Part #	List Price \$	Maximum Pressure	Maximum Flow	Fixed Differential Setting
AM3-PC-P/10	636.00	320 bar	32 lpm	10 bar

aidro
MADE IN EUROPE



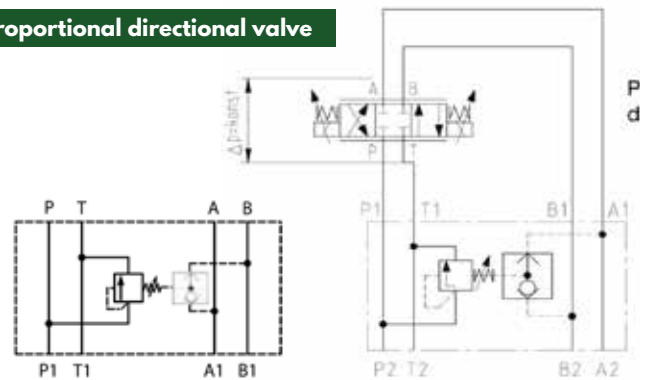
3-Way Pressure Compensator Modular Valve with Load

Part #	List Price \$	Maximum Pressure	Maximum Flow	Adj. Differential Setting
AM3-LS-P3/20	831.00	320 bar	40 lpm	5-40 bar

aidro
MADE IN EUROPE



Proportional directional valve

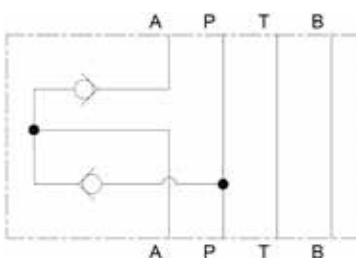


Pressure compensator

Regenerative Modular Valve

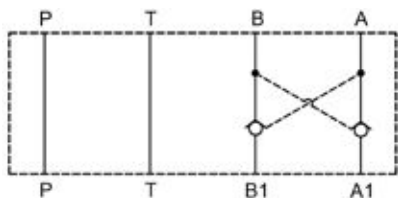
Part #	List Price \$	Maximum Pressure	Maximum Flow	Function
AM3-RGT	410.00	350 bar	30 lpm	Flow from A-P

aidro
MADE IN EUROPE

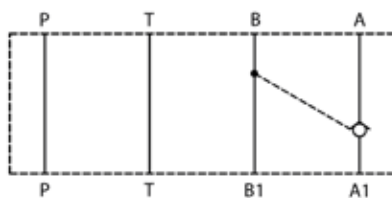


Pilot Check Modular Valve

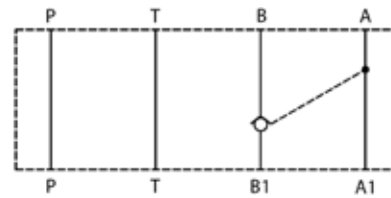
Part #	List Price \$	Maximum Pressure	Maximum Flow	Function
Z2DS6-50	223.00	250 bar	40 lpm	Pilot check on A & B
Z2DS6A-50	197.00	250 bar	40 lpm	Pilot check on A
Z2DS6B-50	197.00	250 bar	40 lpm	Pilot check on B



DS6



DS6A

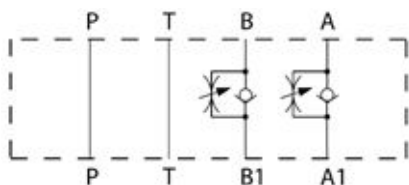


DS6B

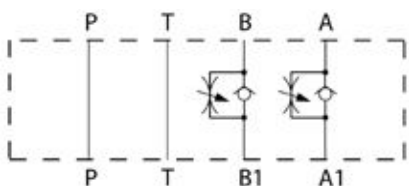


Flow Control Modular Valve (Steel Body)

Part #	List Price \$	Maximum Pressure	Maximum Flow	Function
Z2FDS630-S	236.00	250 bar	60 lpm	Flow control on A & B, meter in
Z2FDS630-S2	236.00	250 bar	60 lpm	Flow control on A & B, meter out



S

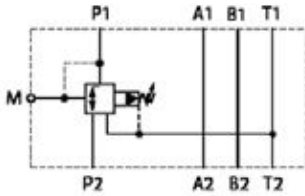


S2

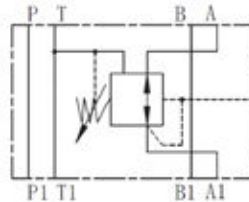


Pressure Reducing Modular Valve (Steel Body)

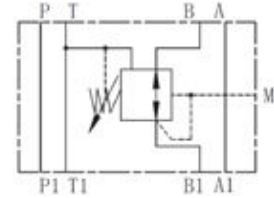
Part #	List Price \$	Maximum Pressure	Maximum Flow	Function
ZPR6DP2-30-210-Y-M	272.00	250 bar	30 lpm	Pressure reducing in P, 70-210 bar
ZPR6DA2-30-210-Y-M	272.00	250 bar	30 lpm	Pressure reducing in A, 70-210 bar
ZPR6DB2-30-210-Y-M	272.00	250 bar	30 lpm	Pressure reducing in B, 70-210 bar



DP



DA

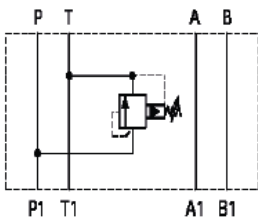


DB

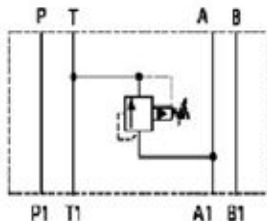


Relief Modular Valve (Steel Body)

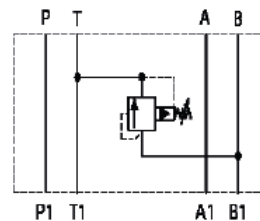
Part #	List Price \$	Maximum Pressure	Maximum Flow	Function
ZPB6VP-1-40-315	255.00	250 bar	40 lpm	Relief on P, 70-250 bar
ZPB6VA-1-40-315	255.00	250 bar	40 lpm	Relief on A, 70-250 bar
ZPB6VB-1-40-315	255.00	250 bar	40 lpm	Relief on B, 70-250 bar
Z2PB6VC-1-40-315	426.00	250 bar	40 lpm	Relief on A & B, 70-250 bar



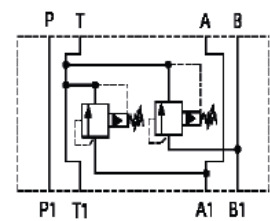
P



A



B



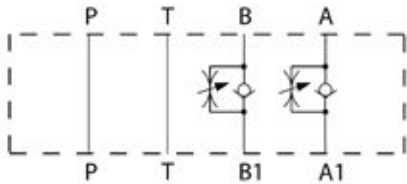
A & B



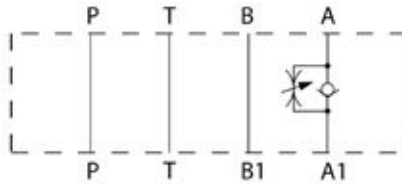
CETOP 5 MODULAR VALVES

Flow Control Modular Valve (Meter In)

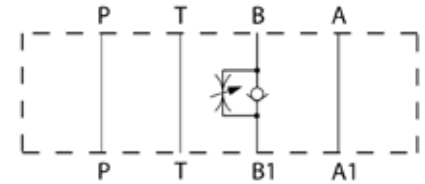
Part #	List Price \$	Function	Maximum Recommended Flow Rate	Maximum Nominal Pressure
AM5-FX-AB/10	633.00	Flow control on A & B, meter in	100 lpm	320 bar
AM5-FX-A/10	596.00	Flow control on A, meter in	100 lpm	320 bar
AM5-FX-B/10	596.00	Flow control on B, meter in	100 lpm	320 bar



FX-AB



FX-A



FX-B

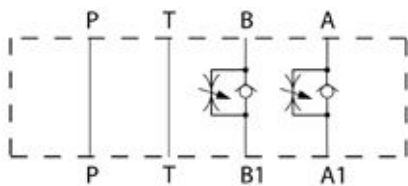


aidro
MADE IN EUROPE

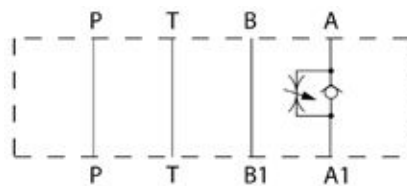
Bolt kits required
See page 266

Flow Control Modular Valve (Meter Out)

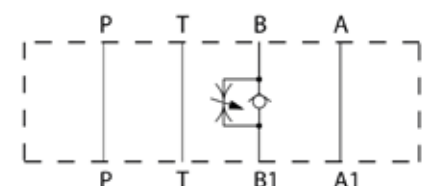
Part #	List Price \$	Function	Maximum Recommended Flow Rate	Maximum Nominal Pressure
AM5-FC-AB/10	633.00	Flow control on A & B, meter out	100 lpm	320 bar
AM5-FC-A/10	596.00	Flow control on A, meter out	100 lpm	320 bar
AM5-FC-B/10	596.00	Flow control on B, meter out	100 lpm	320 bar



FC-AB



FC-A



FC-B

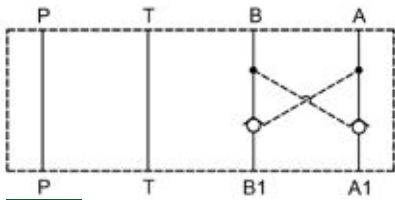


aidro
MADE IN EUROPE

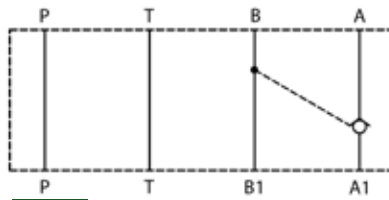
Bolt kits required
See page 266

Pilot Check Modular Valve

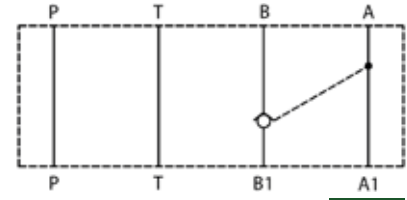
Part #	List Price \$	Function	Maximum Recommended Flow Rate	Maximum Nominal Pressure
AM5-CP-AB/20	846.00	Pilot check on A & B	100 lpm	320 bar
AM5-CP-A/20	757.00	Pilot check on A	100 lpm	320 bar
AM5-CP-B/20	757.00	Pilot check on B	100 lpm	320 bar
AM5-CP-AB/20	846.00	Pilot check on A & B	140 lpm	350 bar
AM5-CP-A/20	757.00	Pilot check on A	140 lpm	350 bar
AM5-CP-B/20	757.00	Pilot check on B	140 lpm	350 bar



CP-AB



CP-A



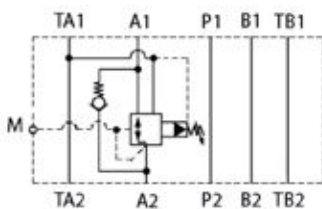
CP-B

aidro
MADE IN EUROPE

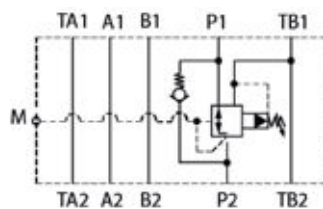


Pressure Reducing Modular Valve (Pilot Operated)

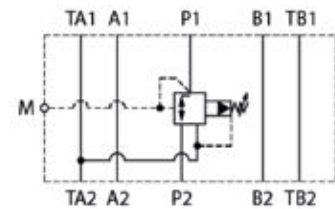
Part #	List Price \$	Function	Pressure Range	Max Recommended Flow Rate	Regulated Line Flow Rate	Max Nominal Pressure
AM5-RP-A-6.3/20	1532.00	Pilot operated w/ check	5-70 bar	100 lpm	80 lpm	320 bar
AM5-RP-B-6.3/20	1532.00	Pilot operated w/ check	5-70 bar	100 lpm	80 lpm	320 bar
AM5-RP-P-6.3/20	1130.00	Pilot operated	5-70 bar	100 lpm	80 lpm	320 bar
AM5-RP-A-16/20	1532.00	Pilot operated w/ check	10-160 bar	100 lpm	80 lpm	320 bar
AM5-RP-B-16/20	1532.00	Pilot operated w/ check	10-160 bar	100 lpm	80 lpm	320 bar
AM5-RP-P-16/20	1130.00	Pilot operated	10-160 bar	100 lpm	80 lpm	320 bar
AM5-RP-A-20/20	1532.00	Pilot operated w/ check	16-210 bar	100 lpm	80 lpm	320 bar
AM5-RP-B-20/20	1532.00	Pilot operated w/ check	16-210 bar	100 lpm	80 lpm	320 bar
AM5-RP-P-20/20	1130.00	Pilot operated	16-210 bar	100 lpm	80 lpm	320 bar



RP-A (w/ check)



RP-B (w/ check)



RP-P

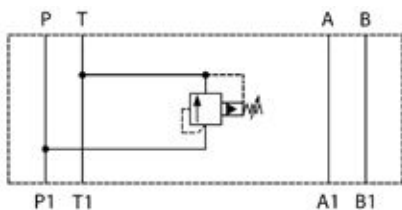
aidro
MADE IN EUROPE



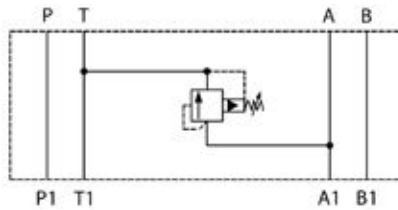
Bolt kits required
See page 266

Pilot Operated Pressure Relief Modular Valve

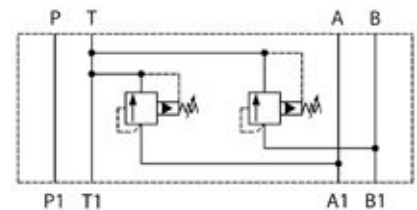
Part #	List Price \$	Function	Pressure Range	Maximum Recommended Flow Rate	Maximum Nominal Pressure
AM5-MP-P-6.3/10	744.00	Pilot operated relief on P	10-70 bar	100 lpm	320 bar
AM5-MP-A-6.3/10	779.00	Pilot operated relief on A	10-70 bar	100 lpm	320 bar
AM5-MP-BA-6.3-6.3/10	1172.00	Pilot operated relief on A & B	10-70 bar	100 lpm	320 bar
AM5-MP-P-12.5/10	744.00	Pilot operated relief on P	10-140 bar	100 lpm	320 bar
AM5-MP-A-12.5/10	779.00	Pilot operated relief on A	10-140 bar	100 lpm	320 bar
AM5-MP-BA-12.5-12.5/10	1172.00	Pilot operated relief on A & B	10-140 bar	100 lpm	320 bar
AM5-MP-P-20/10	744.00	Pilot operated relief on P	20-210 bar	100 lpm	320 bar
AM5-MP-A-20/10	779.00	Pilot operated relief on A	20-210 bar	100 lpm	320 bar
AM5-MP-BA-20-20/10	1172.00	Pilot operated relief on A & B	20-210 bar	100 lpm	320 bar
AM5-MP-P-32/10	744.00	Pilot operated relief on P	20-320 bar	100 lpm	320 bar
AM5-MP-A-32/10	779.00	Pilot operated relief on A	20-320 bar	100 lpm	320 bar
AM5-MP-BA-32-32/10	1172.00	Pilot operated relief on A & B	20-320 bar	100 lpm	320 bar



MP-P



MP-A



MP-BA

aidro
MADE IN EUROPE

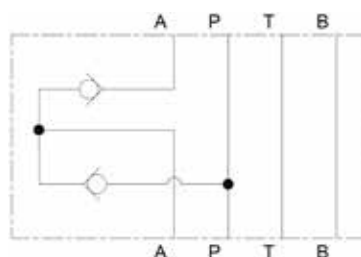


Bolt kits required
See page 266

Regenerative Modular Valve

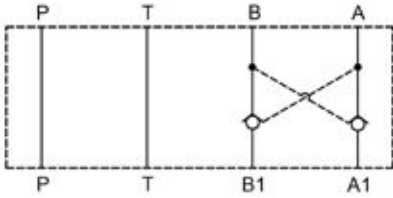
Part #	List Price \$	Maximum Pressure	Maximum Flow	Function
AM5-RGT	640.00	350 bar	80 lpm	Flow from B-P

aidro
MADE IN EUROPE

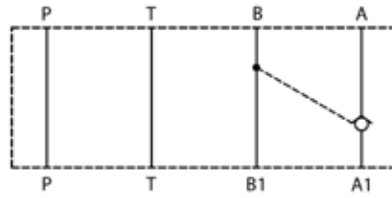


Pilot Check Modular Valve (Steel Body)

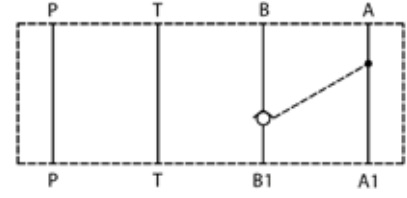
Part #	List Price \$	Maximum Pressure	Maximum Flow	Function
Z2DS10-10	329.00	250 bar	80 lpm	Pilot check on A & B
Z2DS10A-10	315.00	250 bar	80 lpm	Pilot check on A
Z2DS10B-10	315.00	250 bar	80 lpm	Pilot check on B



DS10



DS10A

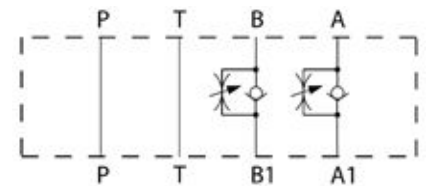


DS10B

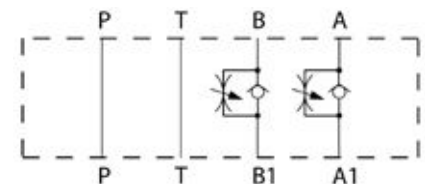


Flow Control Modular Valve (Steel Body)

Part #	List Price \$	Maximum Pressure	Maximum Flow	Function
Z2FDS1030-S	366.00	250 bar	80 lpm	Flow control on A & B, meter in
Z2FDS1030-S2	366.00	250 bar	80 lpm	Flow control on A & B, meter out



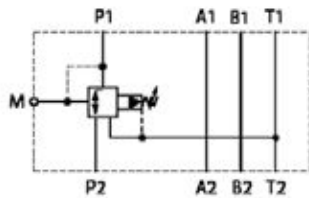
S



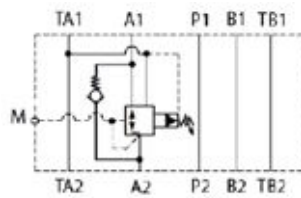
S2

Pressure Reducing Modular Valve (Steel Body)

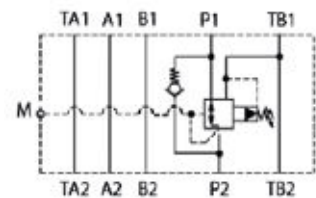
Part #	List Price \$	Maximum Pressure	Maximum Flow	Function
ZPR10DP2-30-210-Y-M	527.00	250 bar	60 lpm	Pressure reducing in P, 70-210 bar
ZPR10DA2-30-210-Y-M	527.00	250 bar	60 lpm	Pressure reducing in A, 70-210 bar
ZPR10DB2-30-210-Y-M	527.00	250 bar	60 lpm	Pressure reducing in B, 70-210 bar



P



A

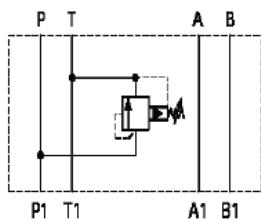


B

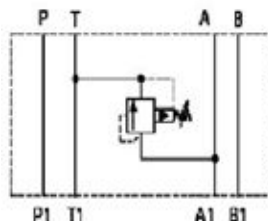


Relief Modular Valve (Steel Body)

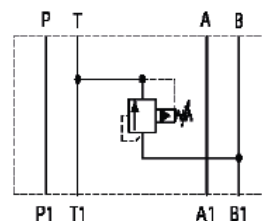
Part #	List Price \$	Maximum Pressure	Maximum Flow	Function
Z2PB10VP-1-40-315	361.00	250 bar	80 lpm	Relief on P, 70-250 bar
Z2PB10VA-1-40-315	330.00	250 bar	80 lpm	Relief on A, 70-250 bar
Z2PB10VB-1-40-315	330.00	250 bar	80 lpm	Relief on B, 70-250 bar
Z2PB10VC-1-40-315	481.00	250 bar	80 lpm	Relief on A & B, 70-250 bar



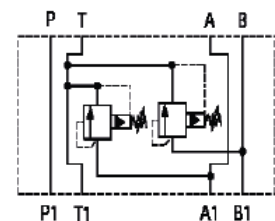
P



A



B



C



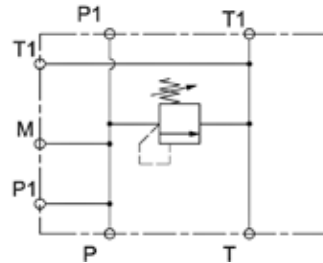
P+T Subplate with Relief Valve Cavity (relief valve sold separately)

Part #	List Price \$	Max Flow	P-T	A-B	Gauge Port	Relief	Material
BPT3A	205.00	30 lpm	1/2" BSPP	1/2" BSPP	1/4" BSPP	SAE8-2	Aluminium
BPT5A	345.00	80 lpm	3/4" BSPP	3/4" BSPP	1/4" BSPP	SAE10-2	Aluminium

MADE IN EUROPE



BPT5A



BPT3A

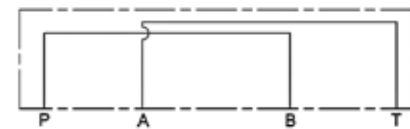
Cetop 3 Crossover Plate, Subplate & End Plate

Part #	List Price \$	Description	Material
ES06-00-10	89.00	Cetop 3 blanking plate	Steel
ES06-00-20-3	154.00	Cetop 3 crossover plate P-B T-A	Steel
ES06-01-14-1	154.00	Cetop 3 subplate A + B ports 1/4" BSPP, through port with gauge ports A + B	Steel
ES06-01-14-4	154.00	Cetop 3 subplate P + T ports 1/4" BSPP, through port with gauge ports P + T	Steel

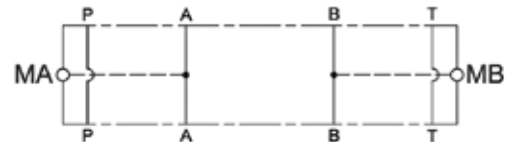
MADE IN EUROPE



ES-06-00-10



ES06-00-20-3



ES06-01-14-1

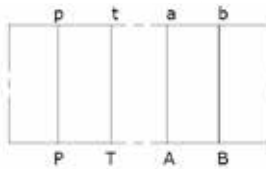


ES06-01-14-4

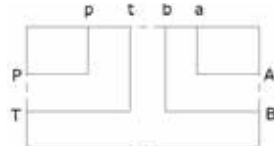
Cetop 3 Manifold Subplate without Relief Valve

Part #	List Price \$	Port Position A/B/P/T	Port Size	Nominal Flow	Maximum Flow	Material
EA06-07-38	143.00	Rear	3/8" BSPP	30 lpm	70 lpm	Aluminium
ES06-07-38	177.00	Rear	3/8" BSPP	30 lpm	70 lpm	Steel
ES06-08-38	242.00	Side	3/8" BSPP	30 lpm	70 lpm	Steel
ES06-09-38	222.00	Side	3/8" BSPP	30 lpm	70 lpm	Steel
EA06-09-38	165.00	Side	3/8" BSPP	30 lpm	70 lpm	Aluminium
EA06-08-38	185.00	Side Parallel	3/8" BSPP	30 lpm	70 lpm	Aluminium

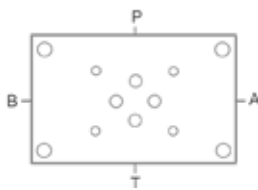
MADE IN EUROPE



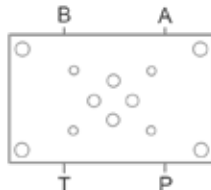
06-07-38



06-08-38, 06-09-38



EA06-09-38



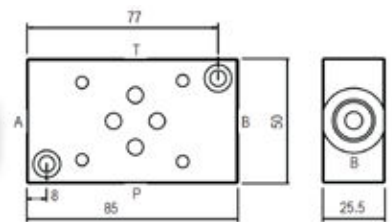
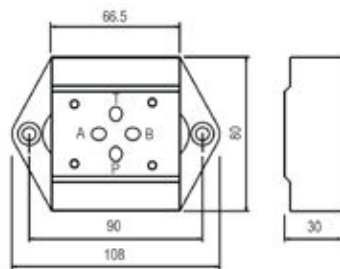
EA06-08-38



EA06-08-38

Cetop 3 Manifold Subplate without Relief Valve

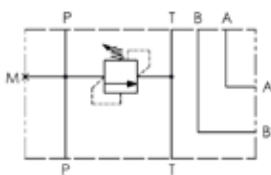
Part #	List Price \$	Port Position A/B/P/T	Port Size	Nominal Flow	Maximum Flow	Material
NEW G342/01	91.00	Rear	3/8" BSPP	30 lpm	70 lpm	Steel
NEW G342/01-SE	91.00	Side	3/8" BSPP	30 lpm	70 lpm	Steel



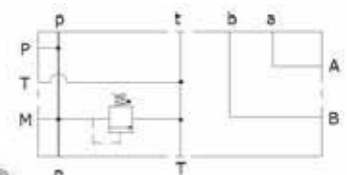
Cetop 3 Manifold Subplate with Relief Valve

Part #	List Price \$	Relief (bar)	A-B (BSPP)	P-T (BSPP)	Unloader Cavity	Gauge Port (BSPP)	Nominal Flow	Max Flow	Material
EA06-10-38-1-3-H	334.00	50-220 (M20)	3/8"	3/8"	-	1/4"	30 lpm	40 lpm	Aluminium
EA06-10-12-1-3-H	334.00	20-215 (M20)	1/2"	1/2"	-	1/4"	30 lpm	40 lpm	Aluminium
BS3C2	231.00	20-210	3/8"	1/2"	-	1/4"	30 lpm	40 lpm	Aluminium

MADE IN EUROPE



BS3C2



EA06-10

Cetop 3 Bar Manifold (1/2" BSPP Ports P+T)

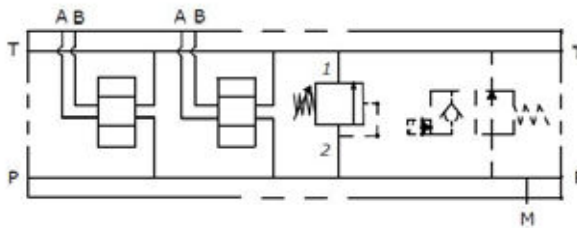
Part #	List Price \$	Stations	Relief Bar	A-B	P-T	Unloader Cavity	Gauge Port	Nominal Flow	Max Flow	Material
EA06-14-38-2-4-3-H	549.00	2	50-220 (M20)	3/8" BSPP	1/2" BSPP	Yes (SAE8-2)	1/4" BSPP	30 lpm	40 lpm	Aluminium
EA06-14-38-3-4-3-H	672.00	3	50-220 (M20)	3/8" BSPP	1/2" BSPP	Yes (SAE8-2)	1/4" BSPP	30 lpm	40 lpm	Aluminium
EA06-14-38-4-4-3-H	786.00	4	50-220 (M20)	3/8" BSPP	1/2" BSPP	Yes (SAE8-2)	1/4" BSPP	30 lpm	40 lpm	Aluminium
EA06-14-38-5-4-3-H	868.00	5	50-220 (M20)	3/8" BSPP	1/2" BSPP	Yes (SAE8-2)	1/4" BSPP	30 lpm	40 lpm	Aluminium
EA06-14-38-6-4-3-H	981.00	6	50-220 (M20)	3/8" BSPP	1/2" BSPP	Yes (SAE8-2)	1/4" BSPP	30 lpm	40 lpm	Aluminium
EA06-14-38-7-4-3-H	1111.00	7	50-220 (M20)	3/8" BSPP	1/2" BSPP	Yes (SAE8-2)	1/4" BSPP	30 lpm	40 lpm	Aluminium
EA06-14-38-8-4-3-H	1279.00	8	50-220 (M20)	3/8" BSPP	1/2" BSPP	Yes (SAE8-2)	1/4" BSPP	30 lpm	40 lpm	Aluminium

MADE IN EUROPE

Note: Unload valve not included

Accessories

Part #	List Price \$	Description
CPS-08	45.00	Steel blanking plug SAE08-2 cavity
EC082C-ONN	258.00	Normally open cartridge valve, 40 lpm, SAE08-2 cavity
EC36012DC	40.00	12v DC coil, 22W
EC36024DC	40.00	24v DC coil, 22W



Cetop 3 High Flow Bar Manifold (3/4" BSPP Ports P+T)

Part #	List Price \$	Stations	Relief Bar	A-B	P-T	Unloader Cavity	Gauge Port	Flow	Material
EA06-28-12-2-4-3-H	817.00	2	10-240 (SAE10-2)	1/2" BSPP	3/4" BSPP	Yes (SAE10-2)	1/4" BSPP	80 lpm	Aluminium
EA06-28-12-3-4-3-H	945.00	3	10-240 (SAE10-2)	1/2" BSPP	3/4" BSPP	Yes (SAE10-2)	1/4" BSPP	80 lpm	Aluminium
EA06-28-12-4-4-3-H	1084.00	4	10-240 (SAE10-2)	1/2" BSPP	3/4" BSPP	Yes (SAE10-2)	1/4" BSPP	80 lpm	Aluminium
EA06-28-12-5-4-3-H	1213.00	5	10-240 (SAE10-2)	1/2" BSPP	3/4" BSPP	Yes (SAE10-2)	1/4" BSPP	80 lpm	Aluminium
EA06-28-12-6-4-3-H	1347.00	6	10-240 (SAE10-2)	1/2" BSPP	3/4" BSPP	Yes (SAE10-2)	1/4" BSPP	80 lpm	Aluminium

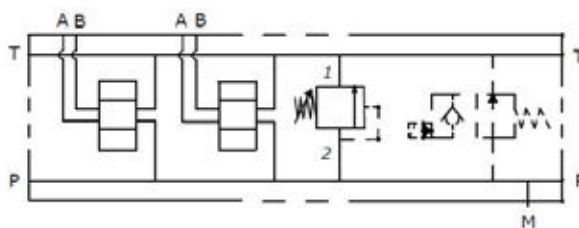
MADE IN EUROPE

Note: Unload valve not included

Accessories

Part #	List Price \$	Description
CPS-10	61.00	Steel blanking plug SAE10-2 cavity
EC102A-ONN	298.00	Normally open cartridge valve, 70 lpm, SAE10-2 cavity
EC36012DC	40.00	12v DC coil, 22W
EC36024DC	40.00	24v DC coil, 22W

Unload valve options
on page 103



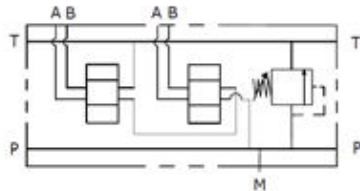
CETOP 3 BAR MANIFOLDS

Cetop 3 Series Bar Manifold (1/2" BSPP Ports P+T)

Part #	List Price \$	Stations	Relief Bar	A-B	P-T	Unloader Cavity	Gauge Port	Nominal Flow	Max Flow	Material
EA06-19-38-2-1-3-H	624.00	2	50-215 (M20)	3/8" BSPP	1/2" BSPP	No	1/4" BSPP	30 lpm	40 lpm	Aluminium
EA06-19-38-3-1-3-H	775.00	3	50-215 (M20)	3/8" BSPP	1/2" BSPP	No	1/4" BSPP	30 lpm	40 lpm	Aluminium
EA06-19-38-4-1-3-H	938.00	4	50-215 (M20)	3/8" BSPP	1/2" BSPP	No	1/4" BSPP	30 lpm	40 lpm	Aluminium

MADE IN EUROPE

Unload valve options
on page 103

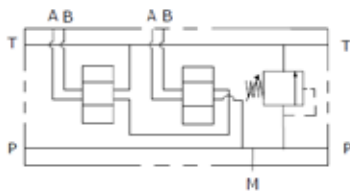


Cetop 3 Bar Manifold with Relief Valve

Part #	List Price \$	Stations	Max Flow	P-T	A-B	Relief	Material
BM2AC2	428.00	2	40 lpm	1/2" BSPP	3/8" BSPP	20-210 bar *	Aluminium
BM3AC2	507.00	3	40 lpm	1/2" BSPP	3/8" BSPP	20-210 bar *	Aluminium
BM4AC2	559.00	4	40 lpm	1/2" BSPP	3/8" BSPP	20-210 bar *	Aluminium
BM5AC2	702.00	5	40 lpm	1/2" BSPP	3/8" BSPP	20-210 bar *	Aluminium
BM6AC2	754.00	6	40 lpm	1/2" BSPP	3/8" BSPP	20-210 bar *	Aluminium

* 10-90 bar available on request

OLEOWEB
MADE IN EUROPE



BM2AC2

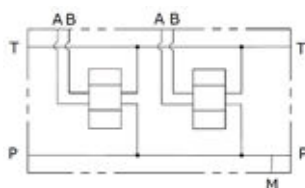
BM3AC2



Cetop 3 Bar Manifold without Relief Valve

Part #	List Price \$	Stations	Max Flow	P-T	A-B	Relief	Material
BM2A	271.00	2	40 lpm	1/2" BSPP	3/8" BSPP	-	Aluminium
BM3A	338.00	3	40 lpm	1/2" BSPP	3/8" BSPP	-	Aluminium
BM4A	407.00	4	40 lpm	1/2" BSPP	3/8" BSPP	-	Aluminium
BM5A	507.00	5	40 lpm	1/2" BSPP	3/8" BSPP	-	Aluminium
BM6A	555.00	6	40 lpm	1/2" BSPP	3/8" BSPP	-	Aluminium

OLEOWEB
MADE IN EUROPE



BM2A

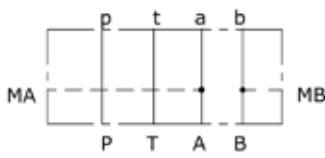
BM4A



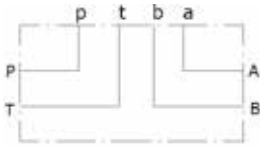
Cetop 5 Manifold Subplate without Relief

Part #	List Price \$	Port Position A-B-P-T	Port Size P-T-A-B	Flow	Material
EA10-02-34	239.00	Side	3/4" BSPP	80 lpm	Aluminium
ES10-02-34	366.00	Side	3/4" BSPP	80 lpm	Steel
ES10-01-34	366.00	Rear	3/4" BSPP	80 lpm	Steel

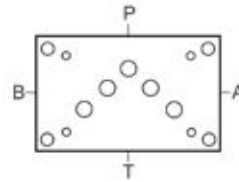
MADE IN EUROPE



01-34



02-34

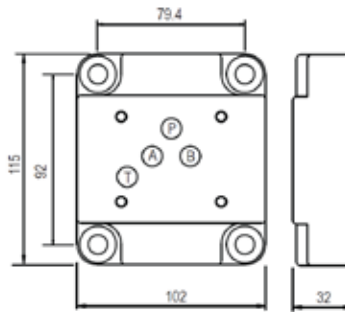


02-34

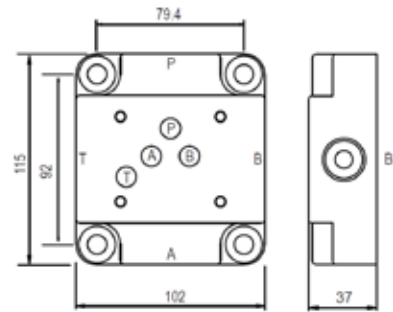


Cetop 5 Manifold Subplate without Relief

Part #	List Price \$	Port Position A-B-P-T	Port Size P-T-A-B	Flow	Material
NEW G67/01	172.00	Rear	1/2" BSPP	70 lpm	Steel
NEW G67/01-SE	172.00	Side	1/2" BSPP	70 lpm	Steel



/01



/01-SE

Cetop 5 Manifold Subplate with Relief

Part #	List Price \$	Max Flow	Port Size P-T-A-B	Gauge Port	Relief	Material
EA10-09-34-1-3-H	598.00	80 lpm	3/4" BSPP	1/4" BSPP	70-250 (M26)	Aluminium
BS5C2	328.00	80 lpm	3/4" BSPP	1/4" BSPP	20-210 bar	Aluminium

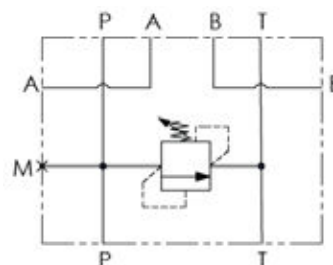
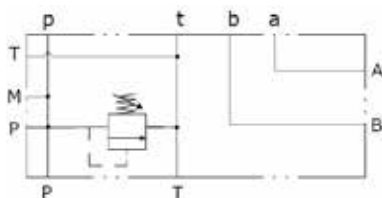


EA10



BS5C2

MADE IN EUROPE

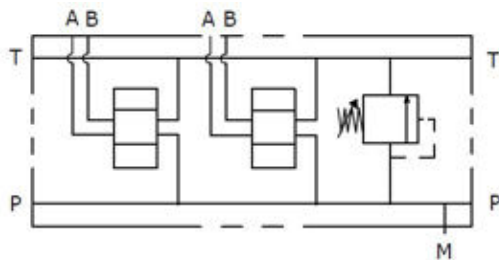


OLEWEB
MADE IN EUROPE

Cetop 5 Bar Manifold

Part #	List Price \$	Stations	Relief Bar	A-B	P-T	Unloader Cavity	Gauge Port	Flow	Material
EA10-06-34-2-1-3-H	638.00	2	70-250 (M26)	3/4" BSPP	3/4" BSPP	No	1/4" BSPP	80 lpm	Aluminium
EA10-06-34-3-1-3-H	825.00	3	70-250 (M26)	3/4" BSPP	3/4" BSPP	No	1/4" BSPP	80 lpm	Aluminium
EA10-06-34-4-1-3-H	977.00	4	70-250 (M26)	3/4" BSPP	3/4" BSPP	No	1/4" BSPP	80 lpm	Aluminium
EA10-06-34-5-1-3-H	1316.00	5	70-250 (M26)	3/4" BSPP	3/4" BSPP	No	1/4" BSPP	80 lpm	Aluminium
EA10-06-34-6-1-3-H	1603.00	6	70-250 (M26)	3/4" BSPP	3/4" BSPP	No	1/4" BSPP	80 lpm	Aluminium

MADE IN EUROPE



Cetop 5 to Cetop 3 Reducing Subplate

Part #	List Price \$	Description	Material
EA610-05-0	165.00	Cetop 5 to 3 reducing subplate	Aluminium

MADE IN EUROPE



Cetop 5 Crossover Plate, Subplate & Endplate

Part #	List Price \$	Description	Material
ES10-00-10	120.00	Cetop 5 blanking plate	Steel
ES10-00-20-3	185.00	Cetop 5 crossover plate P-B T-A	Steel
ES10-10-14-1	175.00	Cetop 5 subplate A + B ports 1/4" BSPP	Steel
ES10-10-14-4	175.00	Cetop 5 subplate P + T ports 1/4" BSPP	Steel

MADE IN EUROPE



ES-10-00-10



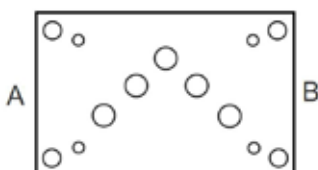
ES10-00-20-3



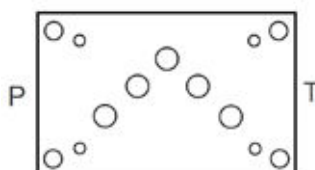
ES10-10-14-1



ES10-01-14-4



14-1



14-4



Manifold Gaskets

Part #	List Price \$	Description	Compatible Manifolds	
GAS-S3	20.00	Gasket to suit single cetop 3 or P+T manifold	BPT3A	EA06-10
GAS-M3	18.00	Gasket to suit single cetop 3 or 2-6 station manifold	EA06-14	EA06-19
GAS-M5	22.00	Gasket to suit single cetop 5 or 2-6 station manifold	EA10-06	
GAS-S5	26.00	Gasket to suit single cetop 5 or P+T manifold	EA10-09-34-1-3-H	BPT5A

MADE IN EUROPE

Direct Acting Relief Cartridge SAE-08

Part #	List Price \$	Cavity	Pressure Range	Maximum Flow
DRV-S08-04-60-N-H	94.00	SAE8-2	16-160 bar	30 lpm
DRV-S08-04-135-N-H	94.00	SAE8-2	25-135 bar	30 lpm
DRV-S08-04-220-N-H	94.00	SAE8-2	50-220 bar	30 lpm
DRV-S08-04-350-N-H	94.00	SAE8-2	120-350 bar	30 lpm
CPS-08	45.00	Steel blanking plug, SAE8-2 cavity		



MADE IN EUROPE

Direct Acting Relief Cartridge SAE-10

Part #	List Price \$	Cavity	Pressure Range	Maximum Flow
DRV-S10-02-110-N-H	151.00	SAE10-2	5-110 bar	80 lpm
DRV-S10-02-240-N-H	151.00	SAE10-2	10-240 bar	80 lpm
DRV-S10-02-350-N-H	151.00	SAE10-2	50-350 bar	80 lpm
CPS-10	61.00	Steel blanking plug, SAE10-2 cavity		



MADE IN EUROPE

Direct Acting Relief Cartridge M20

Part #	List Price \$	Cavity	Pressure Range	Maximum Flow
DRV-M20-02-055-N-H	114.00	M20	5-55 bar	30 lpm
DRV-M20-02-110-N-H	114.00	M20	25-110 bar	30 lpm
DRV-M20-02-215-N-H	114.00	M20	50-215 bar	30 lpm
DRV-M20-02-350-N-H	114.00	M20	100-350 bar	30 lpm
CPS-M20	28.00	Steel blanking plug, M20 cavity		



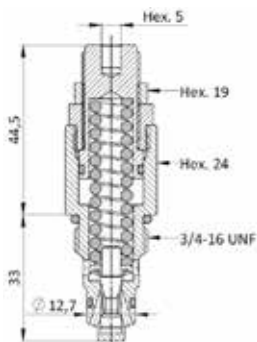
MADE IN EUROPE

Direct Acting Relief Cartridge M26

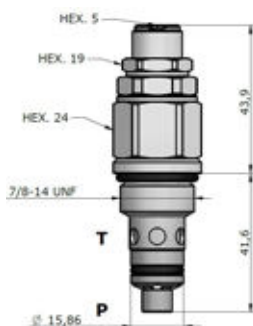
Part #	List Price \$	Cavity	Pressure Range	Maximum Flow
DRV-M26-01-055-N-H	151.00	M26	5-55 bar	80 lpm
DRV-M26-01-110-N-H	151.00	M26	25-110 bar	80 lpm
DRV-M26-01-250-N-H	151.00	M26	75-250 bar	80 lpm
CPS-M26	37.00	Steel blanking plug, M26 cavity		



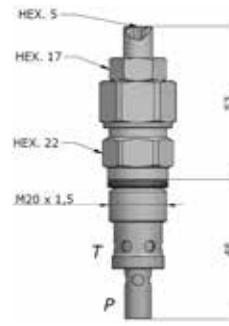
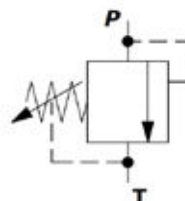
MADE IN EUROPE



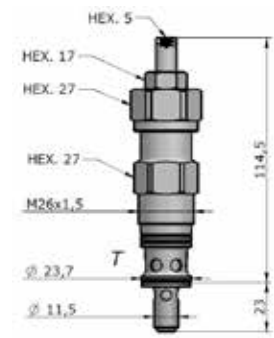
SAE-08



SAE-10



M20



M26