

CATFORD

Jamestown

SA 5491

ENGINEERING PRODUCTS

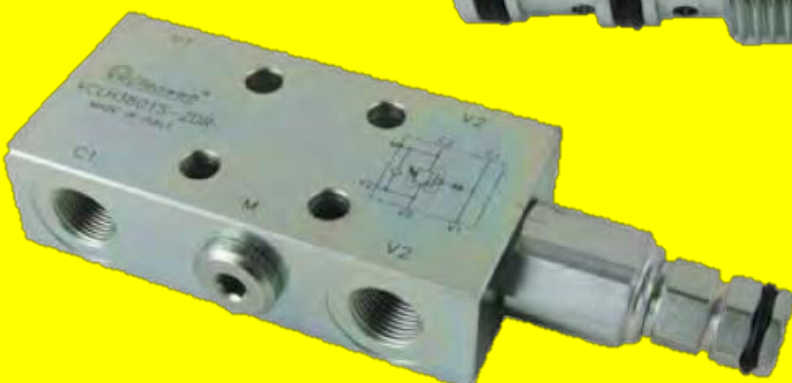
All Prices Excluding GST

Phone: 0418 641 566

www.catford.com.au sales@catford.com.au

Inline & Cartridge Valves

- *Counter Balance
- *Hose Burst
- *Check
- *Needle & Barrel Flow Controls
- *Dividers
- *Relief
- *Sequence
- *Cartridge
- *Unloading
- *Pressure Reducing
- *Rotating Couplings





Lot 25, Mannanarie Road, Jamestown, South Australia 5491

PO Box 178, Jamestown, South Australia 5491



0418 641 566



sales@catford.com.au

Due to fluctuations in the Australian dollar and the economic climate, please be advised that all prices are subject to change.
Please contact us to confirm pricing.

All prices stated within are exclusive of GST
(All prices are correct as of January 1st 2024, but Catford Engineering reserve the right to change these prices without notice)

Inline & Cartridge Valves

CATFORD Jamestown
SA 5491
ENGINEERING
PRODUCTS

Phone: 0418 641 566

www.catford.com.au sales@catford.com.au

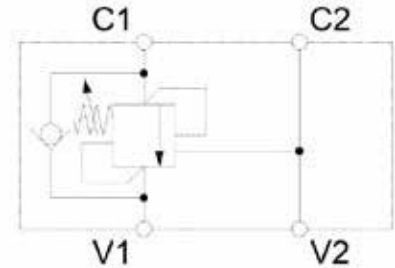
Single Counter Balance Valve Internal Vent

Part #	List Price \$	Ports	Max Pressure	Pressure Range	Max Flow	Ratio	Material
NEW OW11AS-O13HSBSASTS	412.00	3/4" UNO	210 bar	70-280 bar	60 lpm	3:1	Aluminium



Valve preset at 210 bar

Cartridge counter balance valve



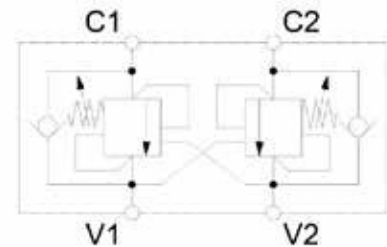
Dual Counter Balance Valve Internal Vent

Part #	List Price \$	Ports	Max Pressure	Pressure Range	Max Flow	Ratio	Material
NEW OW11AS-O13PSADASTS	674.00	3/4" UNO	210 bar	70-280 bar	60 lpm	3:1	Aluminium



Valve preset at 210 bar

Cartridge counter balance valve



Cylinder pipe kits - page 28



WARNING: Hydraulic cylinders without a hose burst valve, pilot operated check valve or counter balance valve directly mounted to the cylinder will not meet Australian Standard AS1418.8, nor occupational health & safety rules.



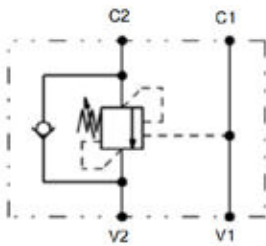
Single Counter Balance Valve Internal Vent

Part #	List Price \$	Ports	Pressure Range	Max Flow	Ratio	Material
CB40SL01	287.00	1/4" BSPP	100-350 bar	40 lpm	4:1	Aluminium
VBCR1401S	222.00	1/4" BSPP	30-210 bar	30 lpm	4.25:1	Steel
VBCR1401S8	231.00	1/4" BSPP	30-210 bar	30 lpm	8.75:1	Steel
VBCL3801	193.00	3/8" BSPP	30-210 bar	40 lpm	4.25:1	Steel
VBCL3801S3	193.00	3/8" BSPP	30-210 bar	40 lpm	3:1	Steel
VBCL3801S8	193.00	3/8" BSPP	30-210 bar	40 lpm	8:1	Steel
VBCR3802S	222.00	3/8" BSPP	60-350 bar	40 lpm	4.25:1	Steel
VBCR3802S8	231.00	3/8" BSPP	60-350 bar	40 lpm	8.75:1	Steel
VBCL1201	231.00	1/2" BSPP	30-210 bar	60 lpm	4.25:1	Steel
VBCL1201S3	231.00	1/2" BSPP	30-210 bar	60 lpm	3:1	Steel
VBCL1201S8	231.00	1/2" BSPP	30-210 bar	60 lpm	8:1	Steel
VBCR1202S	233.00	1/2" BSPP	60-350 bar	60 lpm	4.25:1	Steel
VBCR1202S8	240.00	1/2" BSPP	60-350 bar	60 lpm	8.75:1	Steel
VBCL3402	358.00	3/4" BSPP	60-350 bar	120 lpm	6.2:1	Steel

Note: VBCL/VBCR series also available with 60-350 bar pressure range. Change part number 01 to 02 e.g. VBCL3801 > VBCL3802



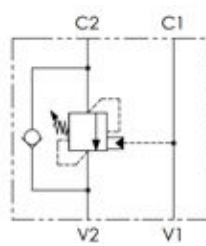
CB40



MADE IN EUROPE



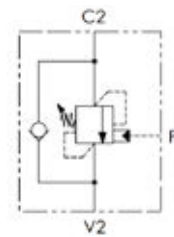
VBCL



OLEOWEB
MADE IN EUROPE



VBCR

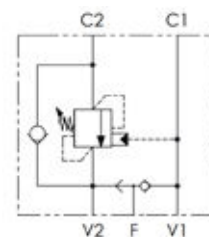


OLEOWEB
MADE IN EUROPE

Single Counter Balance Valve Internal Vent, Brake Release

Part #	List Price \$	Ports	Pressure Range	Max Flow	Ratio	Material
VBFP3801S	299.00	3/8" BSPP	30-210 bar	40 lpm	4.25:1	Steel

OLEOWEB
MADE IN EUROPE

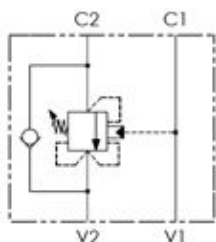


WARNING: Hydraulic cylinders without a hose burst valve, pilot operated check valve or counter balance valve directly mounted to the cylinder will not meet Australian Standard AS1418.8, nor occupational health & safety rules.

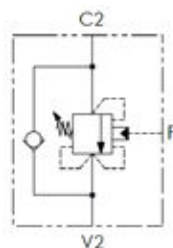


Single Counter Balance Valve External Vent

Part #	List Price \$	Ports	Pressure Range	Max Flow	Ratio	Material
VCCR1401S	274.00	1/4" BSPP	30-210 bar	30 lpm	4.25:1	Steel
VCCR1401S8	283.00	1/4" BSPP	30-210 bar	30 lpm	8.75:1	Steel
VCCL3801	231.00	3/8" BSPP	30-210 bar	40 lpm	4.25:1	Steel
VCCR3802S	274.00	3/8" BSPP	40-350 bar	40 lpm	4.25:1	Steel
VCCR3802S8	283.00	3/8" BSPP	40-350 bar	40 lpm	8.75:1	Steel
VCCL1202	256.00	1/2" BSPP	60-350 bar	60 lpm	4.25:1	Steel
VCCR1202S	284.00	1/2" BSPP	60-350 bar	60 lpm	4.25:1	Steel
VCCR1202S8	293.00	1/2" BSPP	60-350 bar	60 lpm	8.75:1	Steel



VCCL

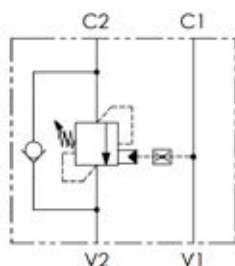


VCCR

OLEWEB
MADE IN EUROPE

Single Counter Balance Valve Internal Vent, Banjo Bolt

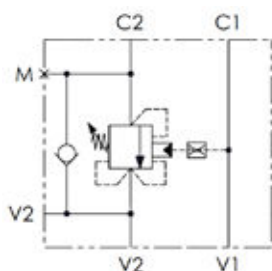
Part #	List Price \$	Ports	Pressure Range	Max Flow	Ratio	Material
VBCB3801S	219.00	3/8" BSPP	30-210 bar	40 lpm	4.25:1	Steel
VBCB3802S	219.00	3/8" BSPP	60-350 bar	40 lpm	4.25:1	Steel



OLEWEB
MADE IN EUROPE

Single Counter Balance Valve External Vent, Manifold Mount

Part #	List Price \$	Ports	Pressure Range	Max Flow	Ratio	M Port	Material
VCLH38001S	286.00	3/8" BSPP	30-210 bar	40 lpm	4:1	1/4" BSPP	Steel



OLEWEB
MADE IN EUROPE



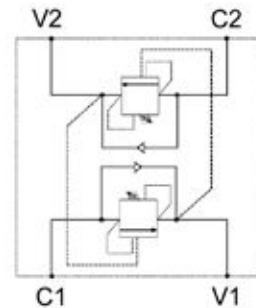
WARNING: Hydraulic cylinders without a hose burst valve, pilot operated check valve or counter balance valve directly mounted to the cylinder will not meet Australian Standard AS1418.8, nor occupational health & safety rules.



Dual Counter Balance Valve Internal Vent

Part #	List Price \$	Ports	Pressure Range	Max Flow	Ratio	Material
CB40DL01	503.00	1/4" BSPP	50-350 bar	25 lpm	4:1	Aluminium

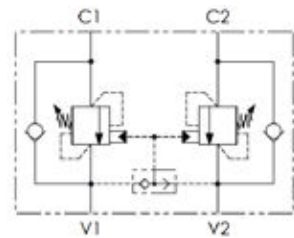
MADE IN EUROPE



Dual Counter Balance Valve Internal Vent

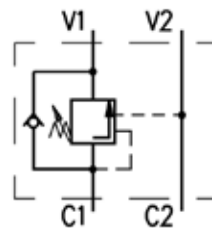
Part #	List Price \$	Ports	Pressure Range	Max Flow	Ratio	Material
VBCD3801	345.00	3/8" BSPP	30-210 bar	40 lpm	4.25:1	Steel
VBCD3801S3	345.00	3/8" BSPP	30-210 bar	40 lpm	3:1	Steel
VBCD3801S8	345.00	3/8" BSPP	30-210 bar	40 lpm	8:1	Steel
VBCD1201	372.00	1/2" BSPP	30-210 bar	60 lpm	4.25:1	Steel
VBCD1201S3	372.00	1/2" BSPP	30-210 bar	60 lpm	3:1	Steel
VBCD1201S8	372.00	1/2" BSPP	30-210 bar	60 lpm	8:1	Steel
VBCD3402	589.00	3/4" BSPP	60-350 bar	120 lpm	6.2:1	Steel

Note: VBCD series also available with 60-350 bar pressure range. Change part number 01 to 02 e.g. VBCD3801 > VBCD3802

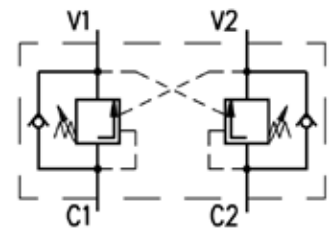


Counter Balance Valve Internal Vent

	Part #	List Price \$	Ports	Pressure Range	Max Flow	Pilot Ratio	Material
NEW	OWC-SE/L38	185.00	3/8" BSPP	40-250 bar	35 lpm	4:1	Aluminium
NEW	OWC-SE/L12	210.00	1/2" BSPP	40-250 bar	35 lpm	4:1	Aluminium
NEW	OWC-DE/L38	285.00	3/8" BSPP	40-250 bar	35 lpm	4:1	Aluminium
NEW	OWC-DE/L12	310.00	1/2" BSPP	40-250 bar	35 lpm	4:1	Aluminium



OWC-SE (single)



OWC-DE (dual)

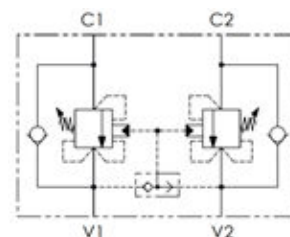


WARNING: Hydraulic cylinders without a hose burst valve, pilot operated check valve or counter balance valve directly mounted to the cylinder will not meet Australian Standard AS1418.8, nor occupational health & safety rules.



Dual Counter Balance Valve External Vent

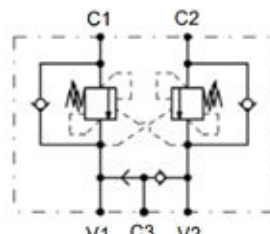
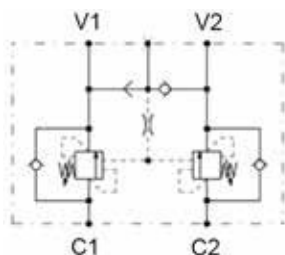
Part #	List Price \$	Ports	Pressure Range	Max Flow	Ratio	Material
VBCC3801	372.00	3/8" BSPP	30-210 bar	40 lpm	4.25:1	Steel
VBCC3802	372.00	3/8" BSPP	60-350 bar	40 lpm	4.25:1	Steel
VBCC1201	385.00	1/2" BSPP	30-210 bar	60 lpm	4.25:1	Steel
VBCC1202	385.00	1/2" BSPP	60-350 bar	60 lpm	4.25:1	Steel



Dual Counter Balance Valve Internal Vent, Brake Release Shuttle

Part #	List Price \$	Ports	Pressure Range	Max Flow	Ratio	Material
CBDLIL03	792.00	1/2" BSPP	100-350 bar	80 lpm	4.2:1	Steel
CBDLSF02	525.00	3/8" BSPP	100-350 bar	60 lpm	4.2:1	Steel
CBDLSF03	633.00	1/2" BSPP	100-350 bar	60 lpm	4.2:1	Steel

MADE IN EUROPE

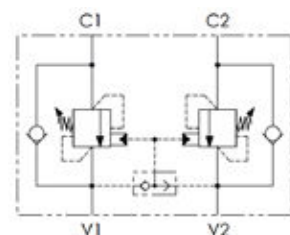


CBDLIL

CBDLSF

Dual Counter Balance Valve Internal Vent, Manifold Mount

Part #	List Price \$	Ports	Pressure Range	Max Flow	Ratio	Material
VBCF1202	385.00	1/2" BSPP	60-350 bar	60 lpm	1:4.25	Steel



WARNING: Hydraulic cylinders without a hose burst valve, pilot operated check valve or counter balance valve directly mounted to the cylinder will not meet Australian Standard AS1418.8, nor occupational health & safety rules.



Hose Burst Valve Housing

Part #	List Price \$	Ports	Thread Type	Material
61100087	20.00	1/4" BSPP	Male/Female	Steel
61100088	20.00	3/8" BSPP	Male/Female	Steel
61100089	25.00	1/2" BSPP	Male/Female	Steel
61100090	41.00	3/4" BSPP	Male/Female	Steel
61100091	68.00	1" BSPP	Male/Female	Steel
61100092	20.00	1/4" BSPP	Female/Female	Steel
61100093	20.00	3/8" BSPP	Female/Female	Steel
61100094	29.00	1/2" BSPP	Female/Female	Steel
61100095	38.00	3/4" BSPP	Female/Female	Steel

Hose Burst Valve Cartridge

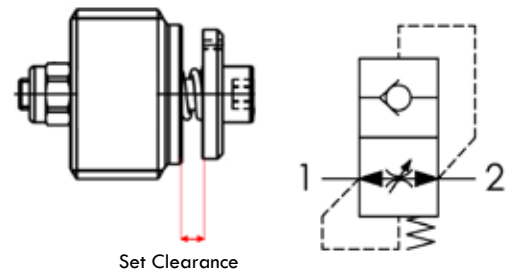
Part #	List Price \$	Thread	Max Pressure	Max Flow
VUBA140	37.00	1/4" BSPP	350 bar	25 lpm
VUBA380	39.00	3/8" BSPP	350 bar	50 lpm
VUBA120	45.00	1/2" BSPP	350 bar	80 lpm
VUBA340	51.00	3/4" BSPP	350 bar	150 lpm
VUBA100	58.00	1" BSPP	350 bar	180 lpm

Hose Burst Valve Installation Tool

Part #	List Price \$	Valve Type
61700001	67.00	VUBA140
61700002	67.00	VUBA380
61700003	67.00	VUBA120
61700004	67.00	VUBA340



OLEWEB
MADE IN EUROPE



Hose Burst valves & adaptors are supplied unset. Set the clearance as per charts below:

Part #	CLEARANCE SETTING (mm)																				
	0	0.1	0.2	0.3	0.4	0.5	0.6	0.7	0.8	0.9	1.0	1.1	1.2	1.3	1.4	1.5	1.6	1.7	1.8	1.9	2.0
VUBA140	0	3	6	9.3	12.7	16	17	18	19.2	20.3	21.5	22.3	23	23.7	24.3	25	25.4	26	26.3	26.7	27
VUBA380	0	3	6	10	14	18	20.5	23	25	27	29	30	31	32.3	33.7	35	36.4	37	38.7	40.3	42
VUBA120	0	4	8	12.7	17.3	22	26.5	31	34	37	40	42.5	45	47.7	50.3	53	55.8	58.6	61.4	64.2	67
VUBA340	0	9	18	25.3	32.7	40	48.5	57	61.7	66.3	71	77	83	88.7	94.3	100	106	111	116	120	124
VUBA100	0	3.5	7	12.0	17	22	27.5	33	39	45	51	53.5	56	60.7	65.3	70	72.4	74.8	77.2	79.6	82

Hose Burst Adaptor

Part #	List Price \$	Ports	Max Pressure	Max Flow
VUBASAE8	66.00	3/4" UNO - 3/4" JICM	315 bar	50 lpm

CLEARANCE (mm)

FLOW (lpm)



WARNING: Hydraulic cylinders without a hose burst valve, pilot operated check valve or counter balance valve directly mounted to the cylinder will not meet Australian Standard AS1418.8, nor occupational health & safety rules.



INLINE & CARTRIDGE VALVES

HOSE BURST & CHECK VALVES

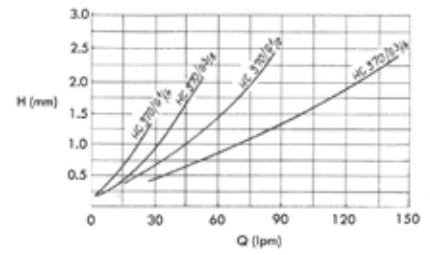
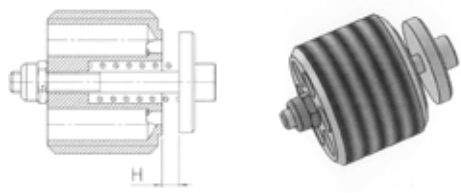
Hose Burst Valves

	Part #	List Price \$	Ports	Description	Max Pressure	Max Flow
NEW	HC970-3/8-TMB	45.00	3/8" BSPP	Female Female	350 bar	50 lpm
NEW	HC970-1/2-TMB	60.00	1/2" BSPP	Female Female	350 bar	80 lpm
NEW	HC970-3/4-TMB	65.00	3/4" BSPP	Female Female	350 bar	150 lpm

LIMITED STOCK



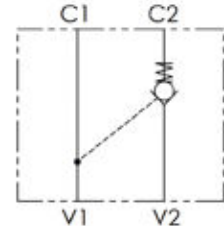
Hose Burst valves & adaptors are supplied unset. Set the clearance as per graphs below:



Single Pilot Check Valve Internal Pilot

	Part #	List Price \$	Ports	Max Pressure	Cracking Pressure	Max Flow	Ratio	Piston Seal	Material
NEW	PO11AS-O23GPSASAS	347.00	3/4" UNO	210 bar	2 bar	60 lpm	3:1	Yes	Aluminium

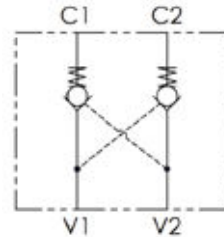
Cartridge pilot check valve



Dual Pilot Check Valve Internal Pilot

	Part #	List Price \$	Ports	Max Pressure	Cracking Pressure	Max Flow	Ratio	Piston Seal	Material
NEW	PO11AS-O23GPSADAS	347.00	3/4" UNO	210 bar	2 bar	60 lpm	3:1	Yes	Aluminium

Cartridge pilot check valve



Cylinder pipe kits - page 28

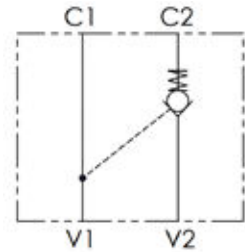


WARNING: Hydraulic cylinders without a hose burst valve, pilot operated check valve or counter balance valve directly mounted to the cylinder will not meet Australian Standard AS1418.8, nor occupational health & safety rules.



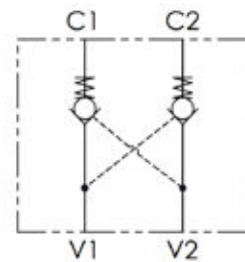
Single Inline Pilot Check Valve Internal Pilot

Part #	List Price \$	Ports	Max Flow	Max Pressure	Pilot Ratio	Material
VRSE140	141.00	1/4" BSPP	15 lpm	320 bar	1:4	Steel
VRSE380	141.00	3/8" BSPP	35 lpm	320 bar	1:4	Steel
VRSE120	175.00	1/2" BSPP	45 lpm	320 bar	1:4	Steel
VRSE340	250.00	3/4" BSPP	70 lpm	320 bar	1:2.9	Steel



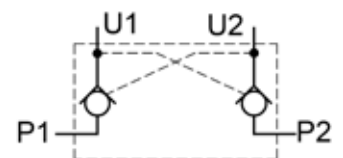
Dual Inline Pilot Check Valve Internal Pilot

Part #	List Price \$	Ports	Max Flow	Max Pressure	Pilot Ratio	Material
VRDE140	141.00	1/4" BSPP	15 lpm	320 bar	1:4	Steel
VRDE380	147.00	3/8" BSPP	35 lpm	320 bar	1:4	Steel
VRDE120	193.00	1/2" BSPP	45 lpm	320 bar	1:4	Steel
VRDE340	373.00	3/4" BSPP	70 lpm	320 bar	1:2.9	Steel



Dual Inline Pilot Check Valve Internal Pilot

Part #	List Price \$	Ports	Max Flow	Max Pressure	Pilot Ratio	Material
NEW KOHU1/4	130.00	1/4" BSPP	12 lpm	320 bar	1:4	Steel
NEW KOHU3/8	130.00	3/8" BSPP	20 lpm	320 bar	1:4	Steel
NEW KOHU1/2	150.00	1/2" BSPP	45 lpm	320 bar	1:4	Steel

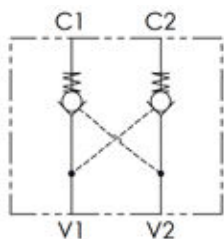


WARNING: Hydraulic cylinders without a hose burst valve, pilot operated check valve or counter balance valve directly mounted to the cylinder will not meet Australian Standard AS1418.8, nor occupational health & safety rules.



Dual Line-Mount Pilot Check Valve Internal Pilot

Part #	List Price \$	Ports	Max Flow	Max Pressure	Pilot Ratio	Material
VRDL380	282.00	3/8" BSPP	35 lpm	350 bar	1:7	Steel
VRDL120	320.00	1/2" BSPP	50 lpm	350 bar	1:7	Steel



OLEOWEB
MADE IN EUROPE

Single Inline Pilot Check Valve External Pilot

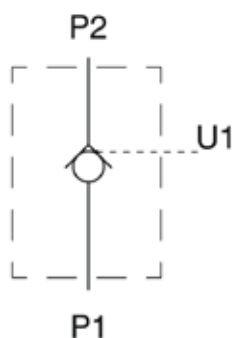
Part #	List Price \$	Ports	Max Flow	Max Pressure	Pilot Ratio	Material
VRPE140	180.00	1/4" BSPP	25 lpm	350 bar	1:5.3	Steel
VRPE380	190.00	3/8" BSPP	40 lpm	350 bar	1:4.4	Steel
VRPE120	194.00	1/2" BSPP	60 lpm	350 bar	1:4.2	Steel
VRPE340	360.00	3/4" BSPP	100 lpm	300 bar	1:4	Steel
VRPE100	472.00	1" BSPP	150 lpm	300 bar	1:4.1	Steel



OLEOWEB
MADE IN EUROPE

Single Inline Pilot Check Valve External Pilot

Part #	List Price \$	Ports	Max Flow	Max Pressure	Pilot Ratio	Material
NEW KOHU1/4-S	100.00	1/4" BSPP	12 lpm	320 bar	1:4	Steel



caproni
MADE IN EUROPE

LIMITED STOCK



WARNING: Hydraulic cylinders without a hose burst valve, pilot operated check valve or counter balance valve directly mounted to the cylinder will not meet Australian Standard AS1418.8, nor occupational health & safety rules.



Inline Check Valve

Part #	List Price \$	Ports	Max Flow	Max Pressure	Cracking Pressure	Material
VUR180	48.00	1/8" BSPP	5 lpm	400 bar	0.5 bar *	Steel
VUR140	48.00	1/4" BSPP	15 lpm	400 bar	0.5 bar *	Steel
VUR380	48.00	3/8" BSPP	30 lpm	400 bar	0.5 bar *	Steel
VUR120	52.00	1/2" BSPP	50 lpm	400 bar	0.5 bar *	Steel
VUR340	74.00	3/4" BSPP	90 lpm	400 bar	0.5 bar *	Steel
VUR100	116.00	1" BSPP	150 lpm	350 bar	0.5 bar *	Steel
VUR114	205.00	1.1/4" BSPP	200 lpm	350 bar	0.5 bar *	Steel
VUR112	239.00	1.1/2" BSPP	300 lpm	350 bar	0.5 bar *	Steel
VUR200	353.00	2" BSPP	430 lpm	250 bar	0.5 bar *	Steel
VMF380SP1	45.00	3/8" BSPP	30 lpm	400 bar	0.5 bar *	Steel
VMF120SP1	63.00	1/2" BSPP	50 lpm	400 bar	0.5 bar *	Steel
VMF340SP1	72.00	3/4" BSPP	90 lpm	400 bar	0.5 bar *	Steel

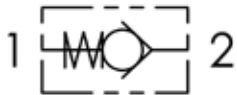
* 3, 4.5 and 6 bar crack also available



VUR

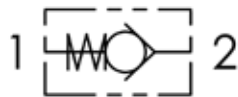


VMF



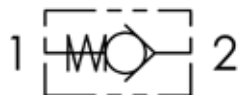
Inline Check Valve

	Part #	List Price \$	Ports	Max Flow	Max Pressure	Cracking Pressure	Material
NEW	SO6A1	33.00	1/4" BSPP	25 lpm	350 bar	0.5 bar	Steel
NEW	SO6A3	33.00	1/4" BSPP	25 lpm	350 bar	3 bar	Steel
NEW	SO8A1	38.00	3/8" BSPP	40 lpm	350 bar	0.5 bar	Steel
NEW	SO8A3	38.00	3/8" BSPP	40 lpm	350 bar	3 bar	Steel
NEW	SO10A1	49.00	1/2" BSPP	60 lpm	350 bar	0.5 bar	Steel
NEW	SO10A3	49.00	1/2" BSPP	60 lpm	350 bar	3 bar	Steel
NEW	SO15A1	59.00	3/4" BSPP	100 lpm	350 bar	0.5 bar	Steel
NEW	SO15A3	59.00	3/4" BSPP	100 lpm	350 bar	3 bar	Steel
NEW	SO20A1	86.00	1" BSPP	150 lpm	350 bar	0.5 bar	Steel
NEW	SO20A3	86.00	1" BSPP	150 lpm	350 bar	3 bar	Steel



Cartridge Check Valve

Part #	List Price \$	Ports	Max Flow	Max Pressure	Pilot Ratio	Material
VUI140	32.00	1/4" BSPP	20 lpm	350 bar	0.5 bar	Steel
VUI380	45.00	3/8" BSPP	30 lpm	350 bar	0.5 bar	Steel
VUI120	47.00	1/2" BSPP	50 lpm	350 bar	0.5 bar	Steel
VUI340	58.00	3/4" BSPP	80 lpm	350 bar	0.5 bar	Steel



Contact us for
installation tools

Needle Flow Control Valve

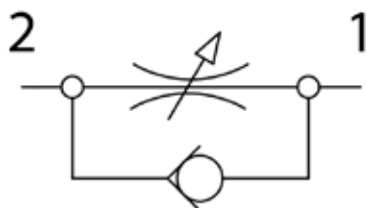
Part #	List Price \$	Ports	Max Flow	Max Pressure	Material
STBF140	90.00	1/4" BSPP	15 lpm	400 bar	Steel
STBF380	96.00	3/8" BSPP	30 lpm	400 bar	Steel
STBF120	110.00	1/2" BSPP	50 lpm	400 bar	Steel
STBF340	166.00	3/4" BSPP	80 lpm	400 bar	Steel
STBF100	231.00	1" BSPP	150 lpm	400 bar	Steel
STBF114	385.00	1.1/4" BSPP	200 lpm	350 bar	Steel
STBF112	449.00	1.1/2" BSPP	300 lpm	350 bar	Steel



OLEOWEB
MADE IN EUROPE

Needle Flow Control Valve with Reverse Flow Check

Part #	List Price \$	Ports	Max Flow	Max Pressure	Material
STUF140	103.00	1/4" BSPP	15 lpm	400 bar	Steel
STUF380	110.00	3/8" BSPP	30 lpm	400 bar	Steel
STUF120	129.00	1/2" BSPP	50 lpm	400 bar	Steel
STUF340	200.00	3/4" BSPP	80 lpm	400 bar	Steel
STUF100	295.00	1" BSPP	150 lpm	400 bar	Steel
STUF114	513.00	1.1/4" BSPP	200 lpm	350 bar	Steel
STUF112	670.00	1.1/2" BSPP	300 lpm	350 bar	Steel



OLEOWEB
MADE IN EUROPE

Panel Mount Nuts

Part #	List Price \$	Valve
84100022	13.00	STBF/STUF140-380
84100023	15.00	STBF/STUF120
84100024	24.00	STBF/STUF340-100
84100030	47.00	STBF/STUF112-114



Needle Flow Control Valve

	Part #	List Price \$	Ports	Max Flow	Max Pressure	Material
NEW	DV8-1-10	59.00	1/4" BSPP	20 lpm	350 bar	Steel
NEW	DV10-1-10	81.00	3/8" BSPP	35 lpm	350 bar	Steel
NEW	DV12-1-10	91.00	1/2" BSPP	45 lpm	350 bar	Steel
NEW	DV16-1-10	118.00	3/4" BSPP	60 lpm	350 bar	Steel
NEW	DV20-1-10	161.00	1" BSPP	100 lpm	350 bar	Steel

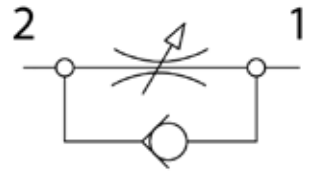
LIMITED STOCK



Needle Flow Control Valve with Reverse Flow Check

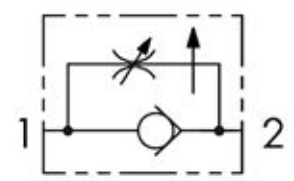
	Part #	List Price \$	Ports	Max Flow	Max Pressure	Material
NEW	DRV6-1-10	65.00	1/8" BSPP	14 lpm	350 bar	Steel
NEW	DRV8-1-10	70.00	1/4" BSPP	20 lpm	350 bar	Steel
NEW	DRV10-1-10	75.00	3/8" BSPP	35 lpm	350 bar	Steel
NEW	DRV12-1-10	97.00	1/2" BSPP	45 lpm	350 bar	Steel
NEW	DRV16-1-10	124.00	3/4" BSPP	60 lpm	350 bar	Steel
NEW	DRV20-1-10	156.00	1" BSPP	100 lpm	350 bar	Steel

LIMITED STOCK



Pressure Compensated Flow Control Valve with Reverse Flow Check

	Part #	List Price \$	Ports	Max Flow	Max Pressure	Material
	VRC140	205.00	1/4" BSPP	10 lpm	250 bar	Steel
	VRC380	205.00	3/8" BSPP	18 lpm	250 bar	Steel
	VRC120	244.00	1/2" BSPP	33 lpm	250 bar	Steel



Barrel Flow Control Valve

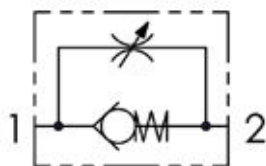
Part #	List Price \$	Ports	Max Flow	Max Pressure	Material
VBRF140	93.00	1/4" BSPP	15 lpm	350 bar	Steel
VBRF380	104.00	3/8" BSPP	30 lpm	350 bar	Steel
VBRF120	121.00	1/2" BSPP	45 lpm	350 bar	Steel
VBRF340	186.00	3/4" BSPP	85 lpm	300 bar	Steel
VBRF100	296.00	1" BSPP	150 lpm	250 bar	Steel



OLEOWEB
MADE IN EUROPE

Barrel Flow Control Valve with Reverse Flow Check

Part #	List Price \$	Ports	Max Flow	Max Pressure	Material
VURF140	103.00	1/4" BSPP	15 lpm	350 bar	Steel
VURF380	117.00	3/8" BSPP	30 lpm	350 bar	Steel
VURF120	130.00	1/2" BSPP	45 lpm	350 bar	Steel
VURF340	207.00	3/4" BSPP	85 lpm	300 bar	Steel
VURF100	328.00	1" BSPP	150 lpm	250 bar	Steel

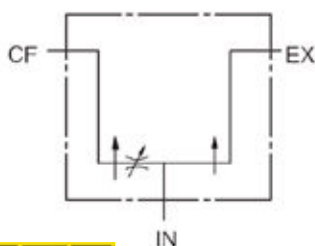


OLEOWEB
MADE IN EUROPE

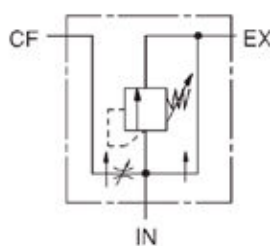
Pressure Compensated Priority Flow Control

Part #	List Price \$	Ports	Max Flow	Max Pressure	Material
FC51G3/8	350.00	3/8" BSPP	30 lpm	207 bar	Cast iron
FC51G1/2	350.00	1/2" BSPP	61 lpm	207 bar	Cast iron
FC51G3/4	350.00	3/4" BSPP	114 lpm	207 bar	Cast iron
FCB51G3/8	420.00	3/8" BSPP with relief	30 lpm	207 bar	Cast iron
FCB51G1/2	420.00	1/2" BSPP with relief	61 lpm	207 bar	Cast iron
FCB51G3/4	420.00	3/4" BSPP with relief	114 lpm	207 bar	Cast iron
FCB51-HK	34.00		Replacement handle kit		
FCB51-SK	14.00		Seal kit		

FC51



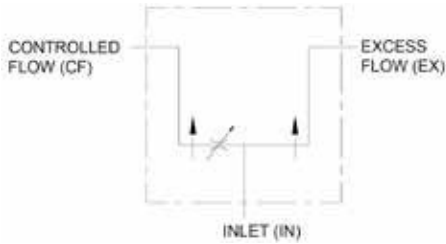
FCB51



CF: Controlled flow EX: Exhaust

Pressure Compensated Priority Flow Control Valve

Part #	List Price \$	Flow Path	Port Size	Flow	Max Pressure	Relief Valve
PFC51-8SAE	460.00	Standard flow control	3/4" UN	0-30 lpm	3000 psi	n/a
PFC51-10SAE	460.00	Standard flow control	7/8" UN	0-61 lpm	3000 psi	n/a
PFC51-12SAE	460.00	Standard flow control	1.1/16" UN	0-114 lpm	3000 psi	n/a
PFC51-16SAE	2851.00	Standard flow control	1.5/16" UN	0-189.2 lpm	3000 psi	n/a
PFC51-24SAE	2851.00	Standard flow control	1.7/8" UN	0-340.7 lpm	3000 psi	n/a



-12SAE

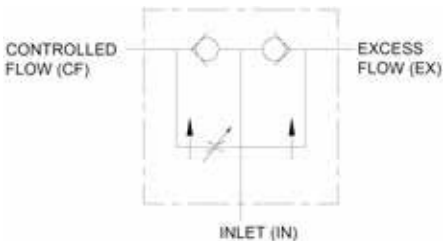


-24SAE

30 micron filtration recommended

Pressure Compensated Priority Flow Control Valve with Free Reverse Flow

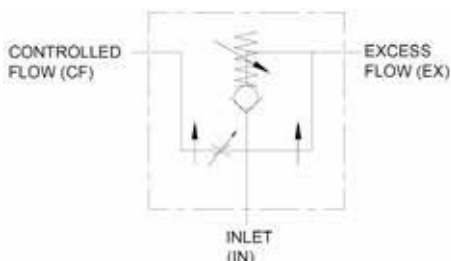
Part #	List Price \$	Flow Path	Port Size	Flow	Max Pressure	Relief Valve
PFC55-10SAE37	607.00	Free reverse flow	7/8" UN	0-30 lpm	3000 psi	n/a
PFC55-10SAE	607.00	Free reverse flow	7/8" UN	0-61 lpm	3000 psi	n/a
PFC55-12SAE	607.00	Free reverse flow	1.1/16" UN	0-114 lpm	3000 psi	n/a



30 micron filtration recommended

Pressure Compensated Priority Flow Control Valve with Relief Valve

Part #	List Price \$	Flow Path	Port Size	Flow	Max Pressure	Relief Preset
PFCR51-8	522.00	Standard flow control	3/4" UN	0-30 lpm	3000 psi	1500 psi
PFCR51-10	522.00	Standard flow control	7/8" UN	0-61 lpm	3000 psi	1500 psi
PFCR51-12	522.00	Standard flow control	1.1/16" UN	0-114 lpm	3000 psi	1500 psi

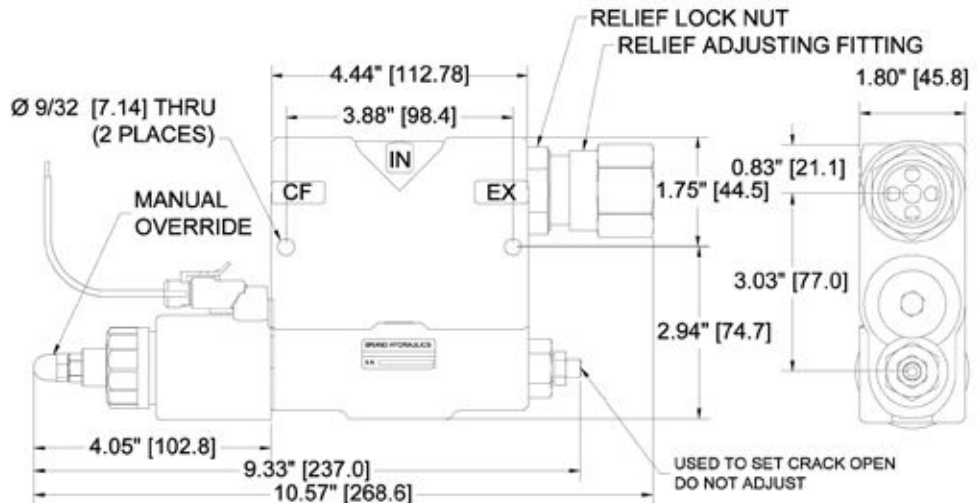
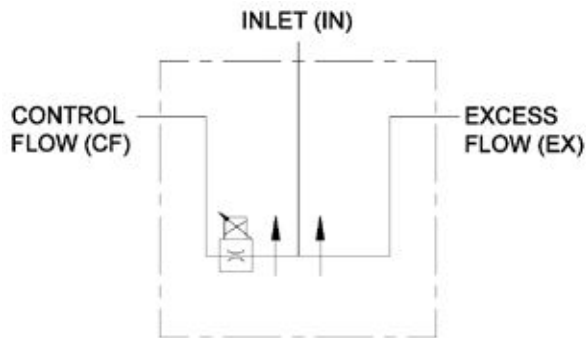


30 micron filtration recommended

Relief range 750-3000psi

Electronically Adjustable Proportional Pressure Compensated Flow Control Valve

Part #	List Price \$	Flow Path	Port Size	Flow	Voltage	Max Amps	Max Pressure
PEFC12-10-122P	1831.00	2-port no reverse flow	1.1/16" UN	0-37.8 lpm	12v DC	1.0 amp	3000 psi
PEFC12-25-122P	1831.00	2-port no reverse flow	1.1/16" UN	0-94.6 lpm	12v DC	1.0 amp	3000 psi
PEFC12-10-12	1833.00	3-port no reverse flow	1.1/16" UN	0-37.8 lpm	12v DC	1.0 amp	3000 psi
PEFC12-15-12	1831.00	3-port no reverse flow	1.1/16" UN	0-56.8 lpm	12v DC	1.0 amp	3000 psi
PEFC12-20-12	1831.00	3-port no reverse flow	1.1/16" UN	0-75.7 lpm	12v DC	1.0 amp	3000 psi
PEFC12-25-12	1831.00	3-port no reverse flow	1.1/16" UN	0-94.6 lpm	12v DC	1.0 amp	3000 psi
PEFC12-30-12	1831.00	3-port no reverse flow	1.1/16" UN	0-113.6 lpm	12v DC	1.0 amp	3000 psi
PEFC12-10-24	1831.00	3-port no reverse flow	1.1/16" UN	0-37.8 lpm	24v DC	0.5 amp	3000 psi
PEFC12-15-24	1831.00	3-port no reverse flow	1.1/16" UN	0-56.8 lpm	24v DC	0.5 amp	3000 psi
PEFC12-20-24	1831.00	3-port no reverse flow	1.1/16" UN	0-75.7 lpm	24v DC	0.5 amp	3000 psi
PEFC12-25-24	1831.00	3-port no reverse flow	1.1/16" UN	0-94.6 lpm	24v DC	0.5 amp	3000 psi
PEFC12-30-24	1831.00	3-port no reverse flow	1.1/16" UN	0-113.6 lpm	24v DC	0.5 amp	3000 psi
C961	303.00				12v DC coil		
C962	364.00				24v DC coil		

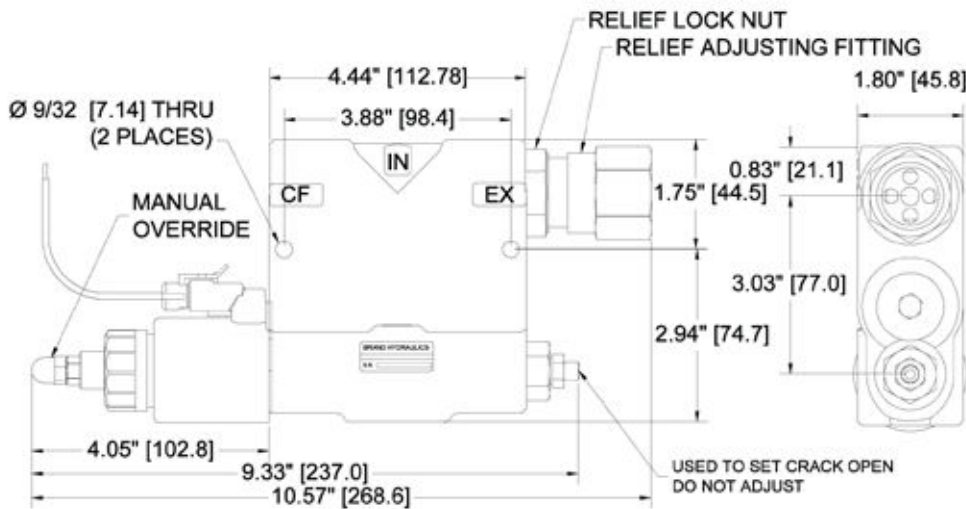
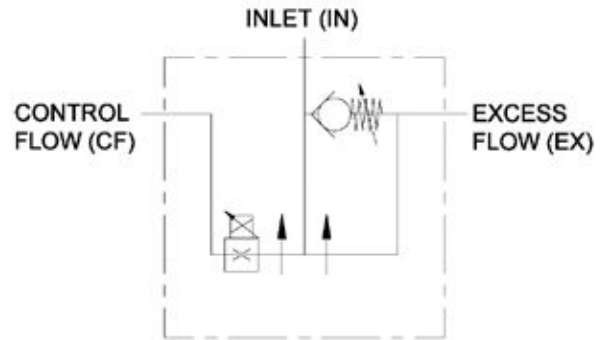


Inbuilt manual override

10 micron filtration recommended

Electronically Adjustable Proportional Pressure Compensated Flow Control Valve w/ Relief Valve

Part #	List Price \$	Flow Path	Port Size	Flow	Voltage	Max Amp	Relief Range	Max Pressure
NEW PEFC12-10-12-R15	2045.00	3-port no reverse flow	1.1/16" UN	0-37.8 lpm	12v DC	1.0 amp	3000 psi	750-3000PSI
NEW PEFC12-15-12-R15	2043.00	3-port no reverse flow	1.1/16" UN	0-56.8 lpm	12v DC	1.0 amp	3000 psi	750-3000PSI
NEW PEFC12-20-12-R15	2043.00	3-port no reverse flow	1.1/16" UN	0-75.7 lpm	12v DC	1.0 amp	3000 psi	750-3000PSI
NEW PEFC12-25-12-R15	2043.00	3-port no reverse flow	1.1/16" UN	0-94.6 lpm	12v DC	1.0 amp	3000 psi	750-3000PSI
NEW PEFC12-30-12-R15	2043.00	3-port no reverse flow	1.1/16" UN	0-113.6 lpm	12v DC	1.0 amp	3000 psi	750-3000PSI
NEW PEFC12-10-24-R15	2043.00	3-port no reverse flow	1.1/16" UN	0-37.8 lpm	24v DC	0.5 amp	3000 psi	750-3000PSI
NEW PEFC12-15-24-R15	2043.00	3-port no reverse flow	1.1/16" UN	0-56.8 lpm	24v DC	0.5 amp	3000 psi	750-3000PSI
NEW PEFC12-20-24-R15	2043.00	3-port no reverse flow	1.1/16" UN	0-75.7 lpm	24v DC	0.5 amp	3000 psi	750-3000PSI
NEW PEFC12-25-24-R15	2043.00	3-port no reverse flow	1.1/16" UN	0-94.6 lpm	24v DC	0.5 amp	3000 psi	750-3000PSI
NEW PEFC12-30-24-R15	2043.00	3-port no reverse flow	1.1/16" UN	0-113.6 lpm	24v DC	0.5 amp	3000 psi	750-3000PSI
NEW C961	303.00				12v DC coil			
NEW C962	364.00				24v DC coil			



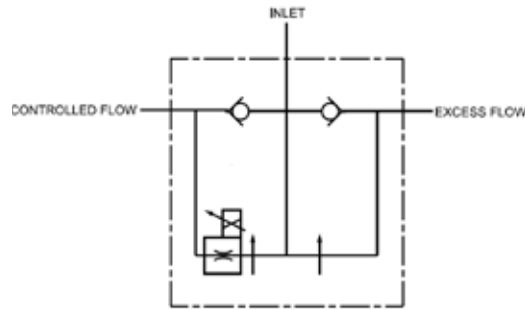
10 micron filtration recommended

Relief preset 1500psi

Inbuilt manual override

Electronically Adjustable Proportional Pressure Compensated Flow Control Valve with Free Reverse Flow

Part #	List Price \$	Flow Path	Port Size	Flow	Voltage	Max Amps	Relief Valve	Ports
PEFCC12-10-12	1913.00	Free reverse flow	1.1/16" UN	0-37.8 lpm	12v DC	1.0 amp	n/a	3-port
PEFCC12-15-12	1913.00	Free reverse flow	1.1/16" UN	0-56.8 lpm	12v DC	1.0 amp	n/a	3-port
PEFCC12-20-12	1913.00	Free reverse flow	1.1/16" UN	0-75.7 lpm	12v DC	1.0 amp	n/a	3-port
PEFCC12-25-12	1913.00	Free reverse flow	1.1/16" UN	0-94.6 lpm	12v DC	1.0 amp	n/a	3-port
PEFCC12-30-12	1913.00	Free reverse flow	1.1/16" UN	0-113.6 lpm	12v DC	1.0 amp	n/a	3-port
PEFCC12-10-24	1913.00	Free reverse flow	1.1/16" UN	0-37.8 lpm	24v DC	0.5 amp	n/a	3-port
PEFCC12-15-24	1913.00	Free reverse flow	1.1/16" UN	0-56.8 lpm	24v DC	0.5 amp	n/a	3-port
PEFCC12-20-24	1913.00	Free reverse flow	1.1/16" UN	0-75.7 lpm	24v DC	0.5 amp	n/a	3-port
PEFCC12-25-24	1913.00	Free reverse flow	1.1/16" UN	0-94.6 lpm	24v DC	0.5 amp	n/a	3-port
PEFCC12-30-24	1913.00	Free reverse flow	1.1/16" UN	0-113.6 lpm	24v DC	0.5 amp	n/a	3-port
C961	303.00				12v DC coil			
C962	364.00				24v DC coil			

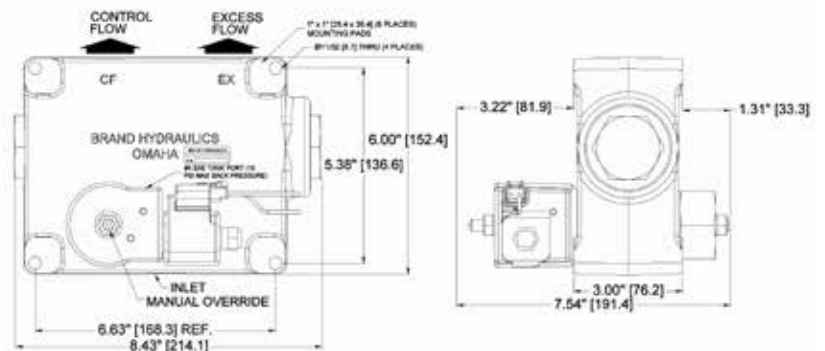
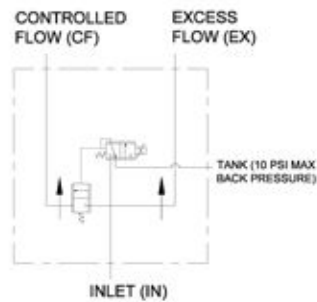


Inbuilt manual override

10 micron filtration recommended

Electronically Adjustable Proportional Pressure Compensated Flow Control Valve

Part #	List Price \$	Flow Path	Port Size	Flow	Voltage	Max Pressure	Ports
LEFC164512DM	4884.00	No reverse flow	1.5/16" UN	0-170.2 lpm	12v DC	3000 psi	3-port
LEFC16512DM	4884.00	No reverse flow	1.5/16" UN	0-208.2 lpm	12v DC	3000 psi	3-port
LEFC164524DM	4976.00	No reverse flow	1.5/16" UN	0-170.2 lpm	24v DC	3000 psi	3-port
LEFC165524DM	4976.00	No reverse flow	1.5/16" UN	0-208.2 lpm	24v DC	3000 psi	3-port



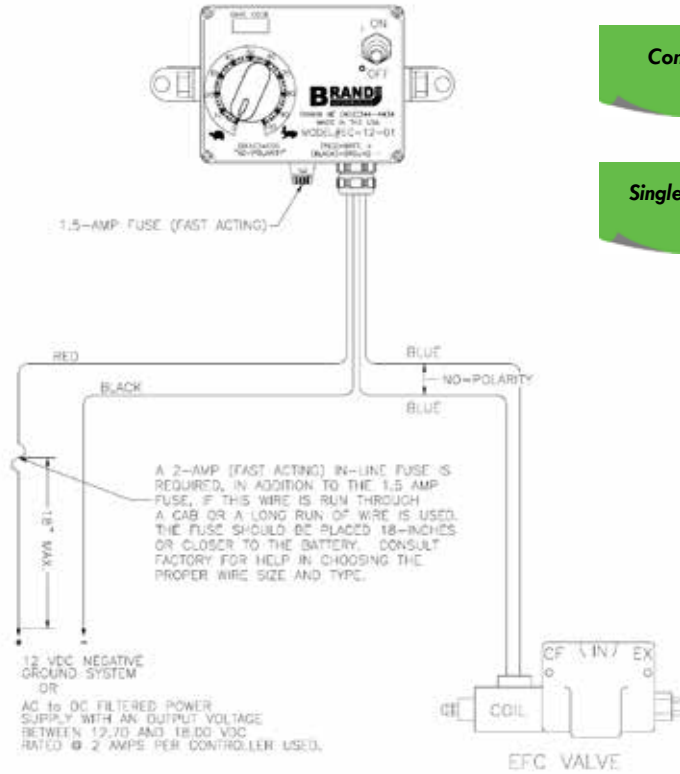
No relief valve

Electronic Control Box

Part #	List Price \$	Outputs	Supply Voltage	Output Voltage	PWM Output	IP Rating
EC-12-01	1450.00	X1 PWM	12.7-18v DC	12.7-18v DC	1.0 amp	IP65/NEMA4



Note - no ramp or current adjustment with this model



Compatible with EFC type valve

Single turn 312° rotation potentiometer

Programmable PWM Proportional Controller

Part #	List Price \$	Input Voltage	Max Output Current	Dither Frequency	Ramp Up & Down	E-Stop	Connection	Power Lead	Signal Lead
NEW HN-DPC	1600.00	12-24v DC	2.1a	70-350Hz	0.1-5.0s	Yes	Deutsch 2-way Female	3 mtr	5 mtr



User programmable min/max current output

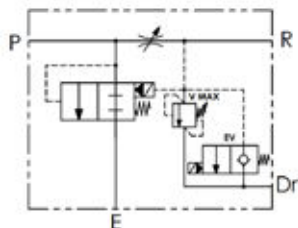
User programmable dither frequency

User programmable ramp setting

Pressure Compensated Priority Flow Control Solenoid Actuated with Relief

Part #	List Price \$	Ports	Max Flow	Max Pressure	Relief	Material
VPP380VRV3	1187.00	3/8" BSPP	50 lpm	250 bar	30-210 bar	Aluminium
VPP120VRV3	1340.00	1/2" BSPP	90 lpm	250 bar	30-210 bar	Aluminium

Note: Voltage required (12 or 24v DC). Normally open or normally closed solenoid valve.



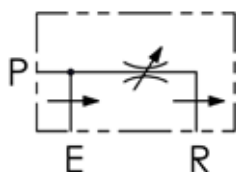
P: Pressure R: Regulated E: Exhaust Dr: Drain



Pressure Compensated Priority Flow Control - Excess to line

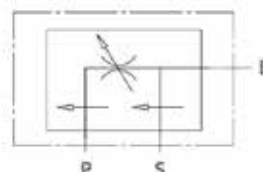
Part #	List Price \$	Ports	Max Flow	Regulated Max Flow	Max Pressure	Material
VPP380	652.00	3/8" BSPP	50 lpm	30 lpm	250 bar	Aluminium
VPP120	666.00	1/2" BSPP	90 lpm	50 lpm	250 bar	Aluminium
VPP340	1049.00	3/4" BSPP	150 lpm	80 lpm	250 bar	Aluminium
PVEL05	1085.00	1" BSPP	190 lpm	120 lpm	260 bar	Aluminium

VPP



P: Pressure R: Regulated E: Exhaust

PVEL



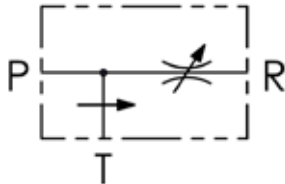
P: Priority S: Surplus E: Entry



MADE IN EUROPE

Pressure Compensated Priority Flow Control - Excess to tank

Part #	List Price \$	Ports	Max Flow	Max Flow in R	Max Pressure	Material
VPT380	525.00	3/8" BSPP	50 lpm	30 lpm	250 bar	Aluminium
VPT120	539.00	1/2" BSPP	80 lpm	50 lpm	250 bar	Aluminium
VPT340	742.00	3/4" BSPP	150 lpm	80 lpm	250 bar	Aluminium
VPT100	978.00	1" BSPP	240 lpm	150 lpm	260 bar	Aluminium

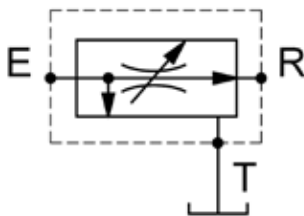


P: Pressure R: Regulated T: Tank



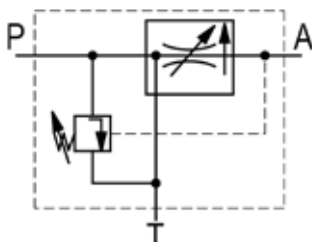
Priority Flow Control - 3 Way Handle Operated

Part #	List Price \$	Ports	Max Flow	Regulated Flow	Max Pressure	Material
NEW RD10/3T	460.00	3/8" BSPP	50 lpm	4-30 lpm	250 bar	Aluminium



Priority Flow Control - 3 Way Knob Operated w/ Integrated Relief Valve

Part #	List Price \$	Ports	Max Flow	Priority Max	Max Pressure	Relief Range	Material
NEW VRFC3/V/VS12	490.00	1/2" BSPP	90 lpm	50 lpm	250 bar	20-250 bar	Aluminium
NEW VRFC3/V/VS34	650.00	3/4" BSPP	150 lpm	90 lpm	250 bar	20-250 bar	Aluminium

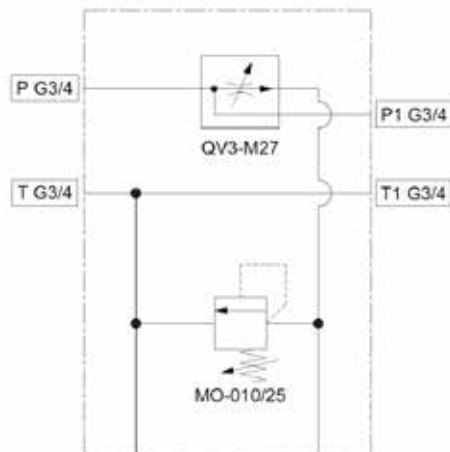


Priority Flow Control with Control Valve Interface Relief on Regulate Flow

Part #	List Price \$	Max Flow	Max Press.	Preset Regulated Flow	Port Size	Relief Range	Material
PD-QV/40-MOP/25	1695.00	90 lpm	350 bar	4-20 lpm	3/4" BSPP	20-210 bar	Steel

Note: Directional Control Valve sold separately (up to 8 can be fitted) - see page 239

aidro
MADE IN EUROPE

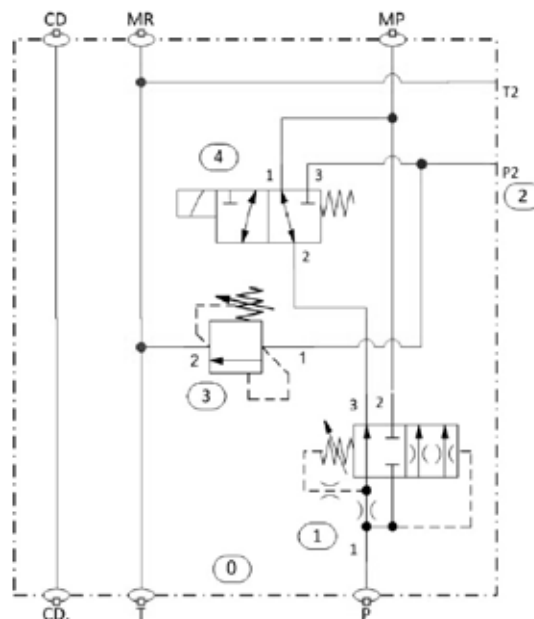


Priority Flow Control with Control Valve Interface/Solenoid Unload Valve & Relief on Regulate Flow

Part #	List Price \$	Max Flow	Max Press.	Preset Regulated Flow	Port Size	Unload Valve	Relief Range	Material
PD-QV/MOP-12VDC	3732.00	240 lpm	350 bar	7 lpm	CD: 1/2" BSPP MP,MR,PT: 1" BSPP	Normally Open 12v DC	20-210 bar	Steel

Note: Directional Control Valve sold separately (up to 8 can be fitted) - see page 239

aidro
MADE IN EUROPE

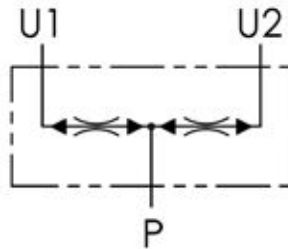


Cartridge Flow Dividers & Combiner

Part #	List Price \$	P-Port	U-Port	Max Flow	Max Pressure	Material
DRF101380	472.00	3/8" BSPP	3/8" BSPP	2-5 lpm	250 bar	Aluminium
DRF102380	472.00	3/8" BSPP	3/8" BSPP	3-10 lpm	250 bar	Aluminium
DRF103380	472.00	3/8" BSPP	3/8" BSPP	7-20 lpm	250 bar	Aluminium
DRF104380	472.00	3/8" BSPP	3/8" BSPP	15-40 lpm	250 bar	Aluminium
FPFDS12CB3412E	792.00	3/4" BSPP	1/2" BSPP	75-100 lpm	250 bar	Aluminium
FPFDS16CB1616A	877.00	1" BSPP	3/4" BSPP	80-115 lpm	250 bar	Aluminium
FPFDS16CB1616E	990.00	1" BSPP	3/4" BSPP	115-150 lpm	250 bar	Aluminium



DRF



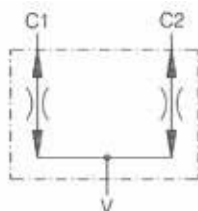
FPFD



MADE IN EUROPE

Cartridge Flow Divider & Combiner

	Part #	List Price \$	V Port	C1/C2 Port	Flow Range	Max Pressure	Material
NEW	FDC10-38-12	450.00	3/8" BSPP	3/8" BSPP	4-12 lpm	210 bar	Aluminium
NEW	FDC10-38-24	450.00	3/8" BSPP	3/8" BSPP	12-24 lpm	210 bar	Aluminium
NEW	FDC10-12-40	450.00	1/2" BSPP	3/8" BSPP	24-40 lpm	210 bar	Aluminium
NEW	FDC-24-34-90	711.00	3/4" BSPP	1/2" BSPP	40-90 lpm	210 bar	Aluminium
NEW	FDC20-100-150	711.00	1" BSPP	3/4" BSPP	80-150 lpm	210 bar	Aluminium

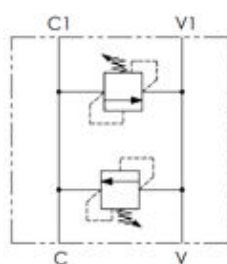


Dual Cross Line Relief Valve Direct Acting

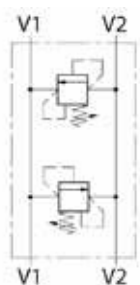
Part #	List Price \$	Ports	Max Flow	Max Pressure	Material
VBDC3802	219.00	3/8" BSPP	40 lpm	20-210 bar	Steel
VBDC3803	219.00	3/8" BSPP	40 lpm	40-350 bar	Steel
VBDC1202	244.00	1/2" BSPP	40 lpm	20-210 bar	Steel
VBDC1203	244.00	1/2" BSPP	40 lpm	40-350 bar	Steel
DPRL800420A	427.00	3/4" BSPP	80 lpm	30-260 bar	Aluminium



VBDC



DPRL



MADE IN EUROPE

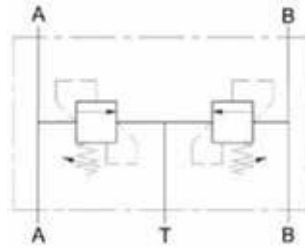
INLINE & CARTRIDGE VALVES

CROSS LINE RELIEF & UNLOADING VALVES

Dual Pressure Relief Common Tank Line Valve

Part #	List Price \$	Ports	Max Flow	Max Pressure	Material
DPRSU800320A	472.00	1/2" BSPP	80 lpm	260 bar	Aluminium

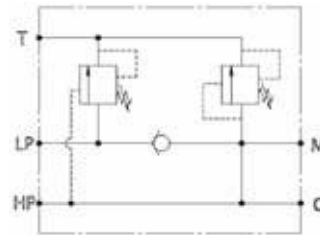
MADE IN EUROPE



Inline Unloading Valve

Part #	List Price \$	Ports					Max Flow		Max Pressure	Material
		M	C	HP	LP	T	HP	LP		
HLUV-03-20-30	690.00	1/4"	1/2"	3/8"	1/2"	3/4"	30 lpm	60 lpm	360 bar	Steel
HLUV-04-20-30	947.00	1/4"	3/4"	1/2"	3/4"	1"	20 lpm	100 lpm	360 bar	Steel

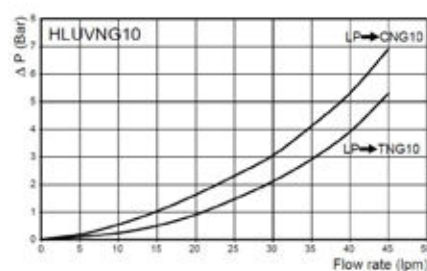
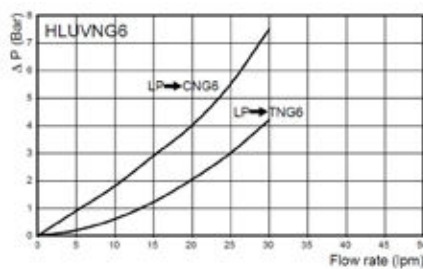
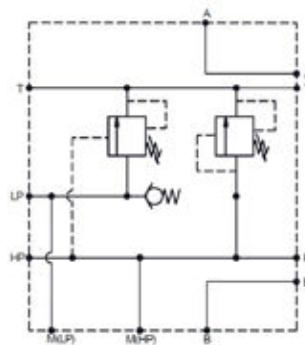
MADE IN EUROPE



High Low Unloading Valve

Part #	List Price \$	To Suit	Relief	Unload	Material
HLUVNG6-20-30	947.00	Cetop 3	100-350 bar	20-260 bar	Aluminium
HLUVNG10-20-30	1038.00	Cetop 5	100-350 bar	20-260 bar	Aluminium

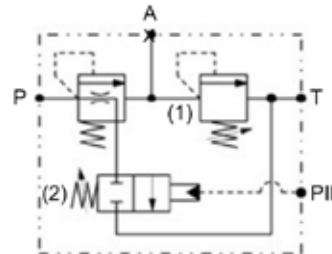
MADE IN EUROPE



Pilot Operated Unloading Valve

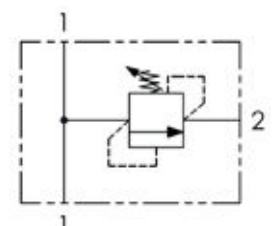
Part #	List Price \$	Ports BSPP			Max Flow	Max Pressure	Pilot Pressure Range	Relief Pressure Range	Material
		P + A	T	PIL					
VMSIP80R03-1	1111.00	1/2"	3/8"	1/4"	40 lpm	250 bar	100-250 bar	30-260 bar	Steel

MADE IN EUROPE



Inline Relief Valve

Part #	List Price \$	Ports	Max Flow	Pressure Range	Material
VMDR1-1401C	131.00	1/4" BSPP	20 lpm	10-40 bar	Steel
VMDR1-1402C	131.00	1/4" BSPP	20 lpm	20-110 bar	Steel
VMDR1-1403C	131.00	1/4" BSPP	20 lpm	30-210 bar	Steel
VMDR1-1404C	131.00	1/4" BSPP	20 lpm	40-350 bar	Steel
VMDR40-3801C	136.00	3/8" BSPP	40 lpm	10-110 bar	Steel
VMDR40-3802C	136.00	3/8" BSPP	40 lpm	20-210 bar	Steel
VMDR40-3803C	136.00	3/8" BSPP	40 lpm	40-300 bar	Steel
VMDR40-1201C	136.00	1/2" BSPP	40 lpm	10-110 bar	Steel
VMDR40-1202C	136.00	1/2" BSPP	40 lpm	20-210 bar	Steel
VMDR40-1203C	136.00	1/2" BSPP	40 lpm	40-300 bar	Steel
VMDR90-1201C	173.00	1/2" BSPP	80 lpm	10-100 bar	Steel
VMDR90-1202C	173.00	1/2" BSPP	80 lpm	20-250 bar	Steel
VMDR90-1203C	173.00	1/2" BSPP	80 lpm	40-350 bar	Steel
VMDR120-3401C	251.00	3/4" BSPP	120 lpm	10-100 bar	Steel
VMDR120-3402C	251.00	3/4" BSPP	120 lpm	20-250 bar	Steel
VMDR120-3403C	251.00	3/4" BSPP	120 lpm	40-350 bar	Steel
VMDR120-1001C	251.00	1" BSPP	120 lpm	10-100 bar	Steel
VMDR120-1002C	251.00	1" BSPP	120 lpm	20-250 bar	Steel
VMDR120-1003C	251.00	1" BSPP	120 lpm	40-350 bar	Steel
81300109	13.00	Adjustment handle - VMDR40 Series			
81300127	14.00	Adjustment handle - VMDR90/VMDR120 Series			



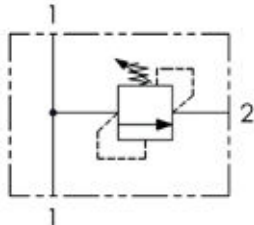
INLINE & CARTRIDGE VALVES

RELIEF VALVES

Inline Relief Valve

	Part #	List Price \$	Ports	Max Flow	Max Pressure	Pressure Range	Material
NEW	HIRV-IN-3/8-250	182.00	3/8" BSPP	45 lpm	250 bar	50-250 bar	Steel
NEW	HIRV-IN-1/2-250	204.00	1/2" BSPP	70 lpm	250 bar	50-250 bar	Steel
NEW	HIRV-IN-3/4-250	225.00	3/4" BSPP	120 lpm	250 bar	50-250 bar	Steel

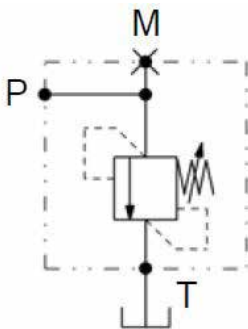
LIMITED STOCK



Inline Relief Valve

	Part #	List Price \$	Ports	Max Flow	Pressure Range	Max Pressure	Material
	PRCDL1500430	450.00	3/4" BSPP	150 lpm	100-350 bar	250 bar	Aluminium
	PRCDL2500530	777.00	1" BSPP	240 lpm	120-350 bar	250 bar	Aluminium

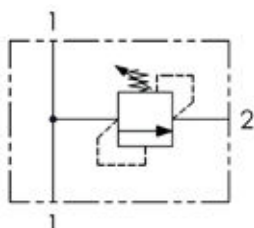
MADE IN EUROPE



Inline Relief Valve

	Part #	List Price \$	Ports	Max Flow	Max Pressure	Pressure Range	Material
NEW	CPL40/38	150.00	3/8" BSPP	40 lpm	250 bar	30-250 bar	Aluminium

LIMITED STOCK

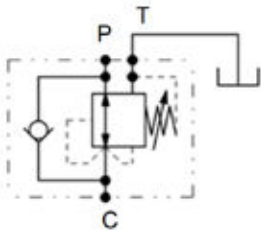


caproni
MADE IN EUROPE

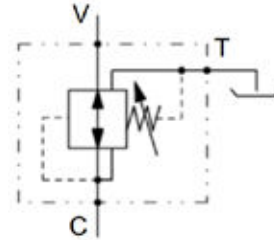
Pressure Reducing Valves

Part #	List Price \$	Ports	Max Flow	Max Pressure	Max Pressure Range	Material
VARPEDO2	635.00	3/8" BSPP	20 lpm	260 bar	10-140 bar	Aluminium
Part #	List Price \$	Ports	Max Flow	Max Pressure In	Max Regulated Press.	Material
VPREDAD02	469.00	3/8" BSPP	30 lpm	250 bar	140 bar	Aluminium

MADE IN EUROPE



VARPEDO2



VPREDAD02



End Stroke Valve

Part #	List Price \$	Ports	Max Flow	Max Pressure	Function	Material
FCM380N	179.00	3/8" BSPP	40 lpm	350 bar	Normally Closed	Steel
FCM120N	256.00	1/2" BSPP	60 lpm	300 bar	Normally Closed	Steel
ESOP02	282.00	3/8" BSPP	30 lpm	350 bar	Normally Open	Steel
ESOP03	309.00	1/2" BSPP	60 lpm	350 bar	Normally Open	Steel
ESDCM 03	603.00	1/2" BSPP	80 lpm	400 bar	Normally Closed	Steel



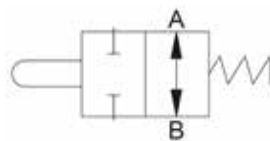
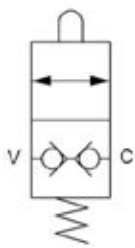
ESDCM



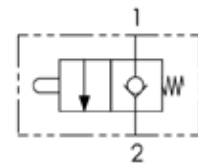
ESOP



FCM



MADE IN EUROPE

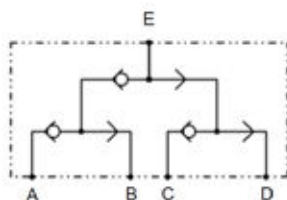


OLEOWEB
MADE IN EUROPE

Multiple Circuit Sensing Valve

Part #	List Price \$	Ports	Max Flow	Max Pressure	Material
VSEL3VHC01	417.00	1/4" BSPP	10 lpm	250 bar	Aluminium

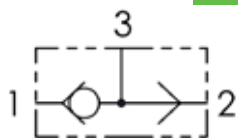
MADE IN EUROPE



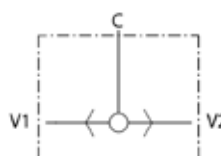
Load Shuttle Ball Valve

Part #	List Price \$	Ports	Max Flow	Max Pressure	Material
VUSF140N	66.00	1/4" BSPP	20 lpm	350 bar	Steel
VUSF380N	71.00	3/8" BSPP	40 lpm	350 bar	Steel
VUSF120N	98.00	1/2" BSPP	60 lpm	350 bar	Steel
SHV04	252.00	3/4" BSPP	140 lpm	350 bar	Steel
SHV05	355.00	1" BSPP	180 lpm	300 bar	Steel

VUSF



SHV

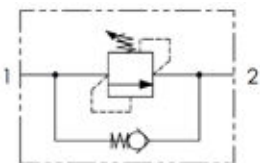


OLEOWEB
MADE IN EUROPE

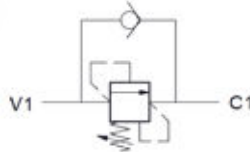
MADE IN EUROPE

Sequence Valve

Part #	List Price \$	Ports	Max Flow	Max Adj. Pressure	Max Pressure	Material
VSL1402	205.00	1/4" BSPP	20 lpm	210 bar	350 bar	Steel
VSL1403	205.00	1/4" BSPP	20 lpm	300 bar	350 bar	Steel
VSL3802	205.00	3/8" BSPP	40 lpm	210 bar	350 bar	Steel
VSL3803	205.00	3/8" BSPP	40 lpm	300 bar	350 bar	Steel
VSL1202	219.00	1/2" BSPP	40 lpm	210 bar	350 bar	Steel
VSL1203	219.00	1/2" BSPP	40 lpm	300 bar	350 bar	Steel
SV800420A	355.00	3/4" BSPP	80 lpm	30-260 bar	260 bar	Aluminium
NEW SV1500510C	830.00	1" BSPP	200 lpm	5-50 bar	260 bar	Aluminium
SV1500520C	830.00	1" BSPP	200 lpm	30-260 bar	260 bar	Aluminium
SV1500530C	830.00	1" BSPP	200 lpm	130-350 bar	260 bar	Aluminium



SV



OLEOWEB
MADE IN EUROPE

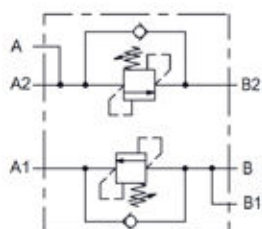
VSL

MADE IN EUROPE

Dual Sequence Valve

Part #	List Price \$	Ports	Max Flow	Pilot Ratio	Range	Material
DSV0220SF	937.00	3/8" BSPP	60 lpm	4.2:1	60-210 bar	Aluminium

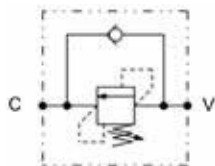
MADE IN EUROPE



Sequence Valve - Line Mount

Part #	List Price \$	Ports	Max Flow	Max Pressure	Range	Material
SVL0210	295.00	3/8" BSPP	40 lpm	350 bar	30-120 bar	Steel
SVL0310	307.00	1/2" BSPP	80 lpm	350 bar	30-140 bar	Steel

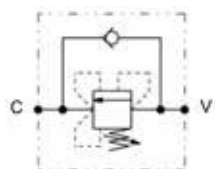
MADE IN EUROPE



Sequence Valve - Line Mount, Back Pressure Proof

Part #	List Price \$	Ports	Max Flow	Max Pressure	Range	Material
SVLCC0410	360.00	3/4" BSPP	120 lpm	350 bar	50-140 bar	Steel
SVLCC0420	360.00	3/4" BSPP	120 lpm	350 bar	80-250 bar	Steel

MADE IN EUROPE



Rotating Coupling - Straight

Part #	List Price \$	Ports	Max Flow	Max Pressure	Max Rotation Pressure
GGIL140	63.00	1/4" BSPP	25 lpm	400 bar	200 bar
GGIL380	70.00	3/8" BSPP	35 lpm	400 bar	200 bar
GGIL120	79.00	1/2" BSPP	60 lpm	350 bar	150 bar
GGIL340	116.00	3/4" BSPP	100 lpm	350 bar	150 bar
GGIL100	159.00	1" BSPP	180 lpm	350 bar	100 bar
GGIL114	288.00	1.1/4" BSPP	200 lpm	250 bar	125 bar
GGIL112	483.00	1.1/2" BSPP	250 lpm	210 bar	105 bar
GGIL200	706.00	2" BSPP	300 lpm	180 bar	90 bar

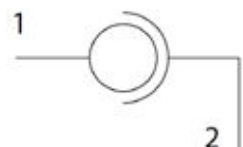
MADE IN EUROPE



Rotating Coupling - 90°

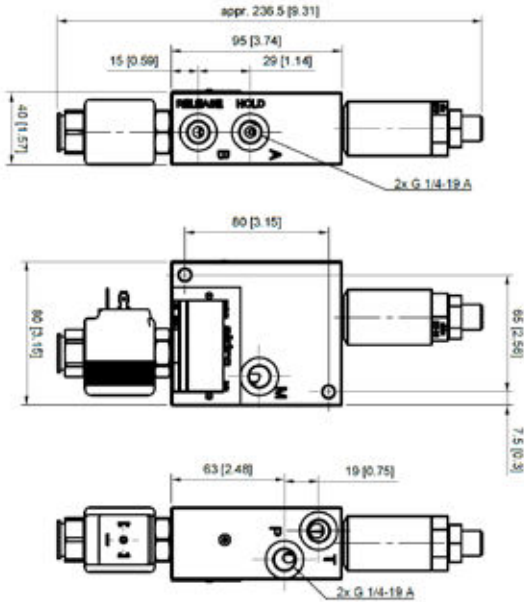
Part #	List Price \$	Ports	Max Flow	Max Pressure	Max Rotation Pressure
GG90140	70.00	1/4" BSPP	25 lpm	400 bar	200 bar
GG90380	76.00	3/8" BSPP	35 lpm	400 bar	200 bar
GG90120	91.00	1/2" BSPP	60 lpm	350 bar	150 bar
GG90340	141.00	3/4" BSPP	100 lpm	350 bar	150 bar
GG90100	181.00	1" BSPP	180 lpm	350 bar	100 bar
GG90114	418.00	1.1/4" BSPP	200 lpm	250 bar	125 bar
GG90112	683.00	1.1/2" BSPP	250 lpm	210 bar	105 bar
GG90200	915.00	2" BSPP	300 lpm	180 bar	90 bar

MADE IN EUROPE

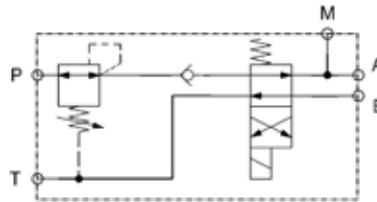


Quick Hitch Valve with Pressure Reducing

Part #	List Price \$	Voltage	Ports	Max Flow	Max Inlet Pressure	Regulated Pressure
QH34C/16-012C/10	721.00	12v DC	1/4" BSPP	20 lpm	350 bar	50-160 bar
QH34C/16-024C/10	721.00	24c DC	1/4" BSPP	20 lpm	350 bar	50-160 bar
BO2-012C	69.00	12v DC			Replacement coil	
BO2-024C	69.00	24v DC			Replacement coil	

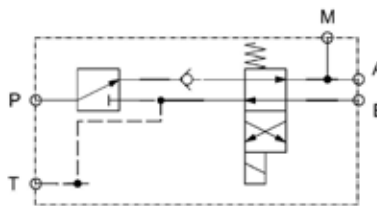
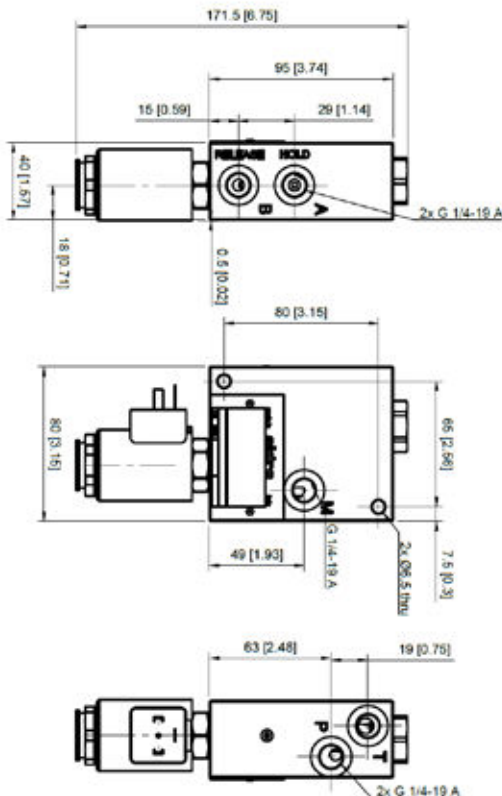


aidro
MADE IN EUROPE



Quick Hitch Valve without Pressure Reducing

Part #	List Price \$	Voltage	Ports	Max Flow	Max Inlet Pressure
QH34C-012C/10	636.00	12v DC	1/4" BSPP	20 lpm	350 bar
QH34C-024C/10	636.00	24c DC	1/4" BSPP	20 lpm	350 bar
C36L-012C	69.00	12v DC			Replacement coil
C36L-024C	69.00	24c DC			Replacement coil



aidro
MADE IN EUROPE

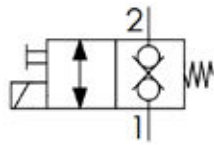
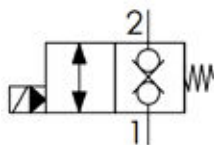
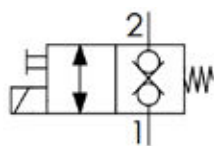
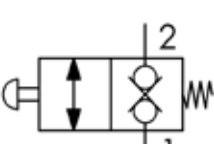
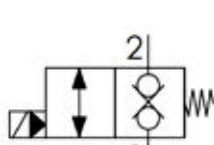
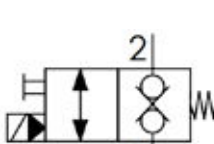
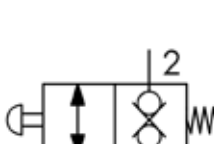
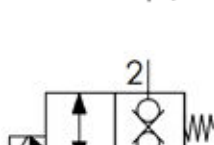


2-Way Electric Operated Solenoid Valves Normally Closed

Part #	List Price \$	Max Pressure	Max Flow	Manual Override	Cavity	Coil Core		
EC082A-CNN	150.00	210 bar	22 lpm	No	08-2	18W	EC	
EC082A-CNV	162.00	210 bar	22 lpm	Yes	08-2	22W	EC360	
EC082B-CNN	232.00	350 bar	40 lpm	No	08-2	22W	EC360	
EC082C-CNN	232.00	350 bar	40 lpm	No	08-2	22W	EC360	
EC082C-CNV	262.00	350 bar	40 lpm	Yes	08-2	22W	EC360	
EC102A-CNN	293.00	350 bar	70 lpm	No	10-2	22W	EC360	
EC102A-CNV	381.00	350 bar	70 lpm	Yes	10-2	22W	EC360	
F72.0.12.2.08.A.0.A.0.0	417.00	350 bar	150 lpm	No	12-2	22W	EC360	
F72.0.12.2.08.A.0.B.0.0	460.00	350 bar	150 lpm	Yes	12-2	22W	EC360	



2-Way Electric Operated Solenoid Valves Normally Closed Dual Check

Part #	List Price \$	Max Pressure	Max Flow	Manual Override	Cavity	Coil Core		
ED082A-CNP	187.00	210 bar	22 lpm	Yes	08-2	22W	EC360	
ED082B-CNN	336.00	350 bar	40 lpm	No	08-2	22W	EC360	
ED082B-CNV	370.00	350 bar	40 lpm	Yes	08-2	22W	EC360	
VEM6	129.00	320 bar	30 lpm	Yes	08-2	22W	EC360	
ED102A-CNN	455.00	350 bar	70 lpm	No	10-2	22W	EC360	
ED102A-CNV	486.00	350 bar	70 lpm	Yes	10-2	22W	EC360	
VEM10	141.00	320 bar	50 lpm	Yes	10-2	22W	EC360	
F.72.0.12.2.12.A.0.A.0.0	630.00	350 bar	150 lpm	No	12-2	22W	EC360	

2-Way Electric Operated Solenoid Valve Normally Open

Part #	List Price \$	Max Pressure	Max Flow	Manual Override	Cavity	Coil Core		
EC082A-ONN	177.00	210 bar	22 lpm	No	08-2	18W	EC	
EC082C-ONN	258.00	350 bar	40 lpm	No	08-2	22W	EC360	
EC102A-ONN	298.00	350 bar	70 lpm	No	10-2	22W	EC360	
F.72.0.12.2.09.A.0.A.0.0	425.00	350 bar	150 lpm	No	10-2	22W	EC360	

2-Way Electric Operated Solenoid Valves Dual Check Normally Open

Part #	List Price \$	Max Pressure	Max Flow	Manual Override	Cavity	Coil Core		
ED082B-ONN	336.00	350 bar	40 lpm	No	08-2	22W	EC360	
ED102A-ONN	470.00	350 bar	70 lpm	No	10-2	22W	EC360	
F.72.0.12.2.13.A.0.A.0.0	708.00	350 bar	150 lpm	No	12-2	22W	EC360	
F.72.0.12.2.13.A.0.C.0.0	759.00	350 bar	150 lpm	Yes	12-2	22W	EC360	

3-Way 2 Position Cartridge Valve

Part #	List Price \$	Max Pressure	Max Flow	Manual Override	Cavity	Coil Core		
ES083A-1NN	231.00	210 bar	12 lpm	No	08-3	22W	EC360	
ES083F-1NT	309.00	210 bar	12 lpm	Yes	08-3	22W	EC360	
ES083A-2NN	231.00	210 bar	12 lpm	No	08-3	22W	EC360	
ES083A-2NT	275.00	210 bar	12 lpm	Yes	08-3	22W	EC360	



EC082A



ED082A



EC082B



ED082B



EC082C



ED102A



EC102A



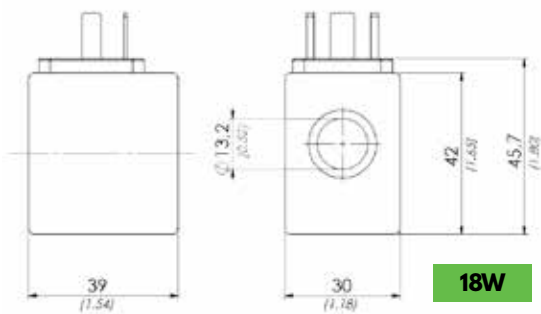
ES083F

Coils

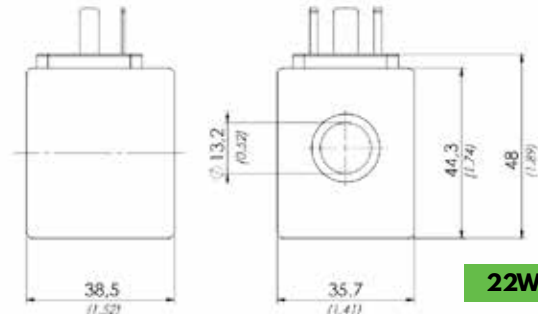
Part #	List Price \$	Voltage	Power
EC012DC	36.00	12v DC	18 watt *
EC024DC	36.00	24v DC	18 watt *
EC11050	37.00	110v AC	18 watt *
EC22050RAC **	37.00	220v RAC	18 watt
EC36012DC	40.00	12v DC	22 watt
EC36024DC	40.00	24v DC	22 watt
EC36220RAC ***	43.00	220v AC RAC	22 watt



* These 18 watt coils only suitable with EC082A-CNN & EC082A-ONN cartridge valves.
 ** can only be used with EC082A-CNV/EC082A-CNN cartridge valves & requires DP-REC (DIN Plug w/ rectifier AC to DC).
 *** compatible with all valves & requires DP-REC (DIN plug w/ rectifier AC to DC).



18W



22W

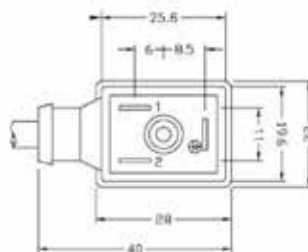
DIN Plugs 43650 Form B IND 2-Pole + PE

Part #	List Price \$	Connector	Circuits	Pre-wired Length	Integrated Gasket	Protection	Voltage DC	Voltage AC	Max. Current
NEW DP-IP65-AC/DC-IND	21.00	Form B IND	Red LED + varistor	-	No	IP65	1-250v	1-250v	10a @40°C
NEW DP-IP67-AC/DC-IND-3M	42.00	Form B IND	Red LED + varistor	3 meters	Yes	IP67	10-50v	-	10a @40°C

MADE IN EUROPE



DP-IP67-AC/DC-IND-3M
Pre-wired 3m lead



DP-IP65-AC/DC-IND

DIN Plugs 43650 Form A 2-Pole + PE

Part #	List Price \$	Connector	Circuits	Pre-wired Length	Integrated Gasket	Protection	Voltage DC	Voltage AC	Max. Current
DP-IP67-AC/DC-250	21.00	Form A	Red LED + varistor	-	No	IP65	1-250v	1-250v	10a @40°C
DP-IP67-AC/DC-38	21.00	Form A	Red LED + varistor	-	No	IP65	1-38v	1-30v	10a @40°C
DP-IP67-AC/DC-3M	42.00	Form A	Red LED + varistor	3 meters	Yes	IP67	1-42v	10-30v	10a @40°C
DP-LED-AC	13.00	Form A	Red LED	-	No	IP64	-	1-250v	10a @40°C
DP-LED-DC	13.00	Form A	Red LED	-	No	IP64	1-42v	-	10a @40°C
DP-REC-LV	35.00	Form A	Red LED + rectifier	-	No	IP65	-	10-50v	1.4a @40°C
DP-REC	35.00	Form A	Red LED + rectifier	-	No	IP65	-	70-250v	1.4a @40°C

MADE IN EUROPE



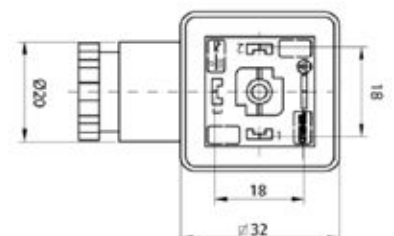
DP-IP67-AC/DC-3M
Pre-wired 3m lead



DP-IP67-AC/DC-250
DP-IP67-AC/DC-38
DP-REC-LV, DP-REC

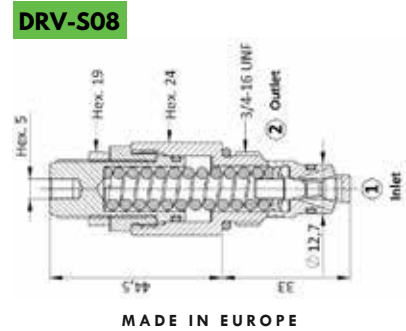
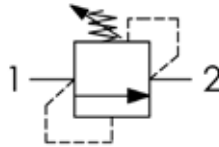
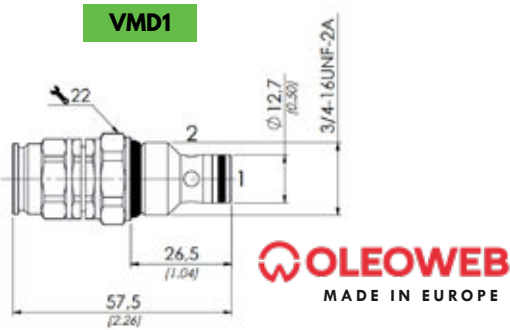


DP-LED-AC
DP-LED-DC



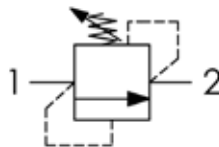
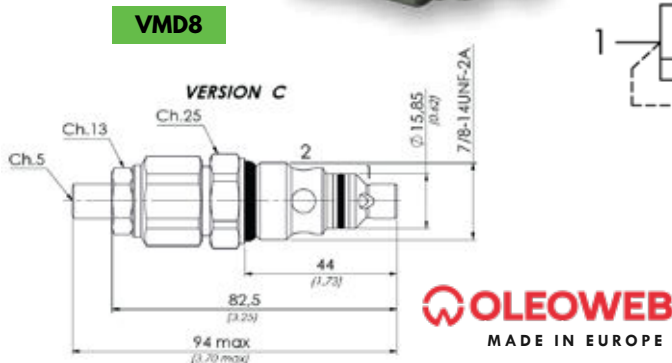
Cartridge Relief Valve SAE 08-2 Cavity

Part #	List Price \$	Max Pressure	Max Flow	Pressure Adjustment Range	Relief Type
VMD1-C1	66.00	350 bar	20 lpm	10-40 bar	Direct acting
VMD1-C2	66.00	350 bar	20 lpm	20-110 bar	Direct acting
VMD1-C3	66.00	350 bar	20 lpm	30-210 bar	Direct acting
VMD1-C4	66.00	350 bar	20 lpm	40-350 bar	Direct acting
DRV-S08-04-60-N-H	94.00	350 bar	30 lpm	16-60 bar	Direct acting
DRV-S08-04-135-N-H	94.00	350 bar	30 lpm	25-135 bar	Direct acting
DRV-S08-04-220-N-H	94.00	350 bar	30 lpm	50-220 bar	Direct acting
DRV-S08-04-350-N-H	94.00	350 bar	30 lpm	120-350 bar	Direct acting
CPS-08	45.00	Steel cavity blanking plug			



Cartridge Relief Valve SAE 10-2 Cavity

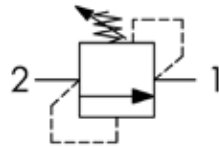
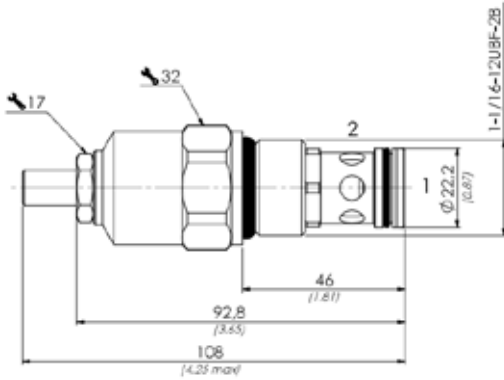
Part #	List Price \$	Max Pressure	Max Flow	Pressure Adjustment Range	Relief Type
VMD8-C1	84.00	350 bar	40 lpm	10-90 bar	Direct acting
VMD8-C2	84.00	350 bar	40 lpm	20-210 bar	Direct acting
VMD8-C3	84.00	350 bar	40 lpm	70-350 bar	Direct acting
DRV-S10-02-110-N-H	151.00	350 bar	80 lpm	5-110 bar	Direct acting
DRV-S10-02-240-N-H	151.00	350 bar	80 lpm	10-240 bar	Direct acting
DRV-S10-02-350-N-H	151.00	350 bar	80 lpm	50-350 bar	Direct acting
CPS-10	61.00	Steel cavity blanking plug			



Cartridge Relief Valve SAE 12-2 Cavity

Part #	List Price \$	Max Pressure	Max Flow	Pressure Adjustment Range	Relief Type
VMD160-C1	150.00	350 bar	160 lpm	10-120 bar	Direct acting differential
VMD160-C2	150.00	350 bar	160 lpm	100-250 bar	Direct acting differential
VMD160-C3	187.00	350 bar	160 lpm	190-350 bar	Direct acting differential
81300095	7.00	Tamper proof cap			
81300127	14.00	Hand knob			

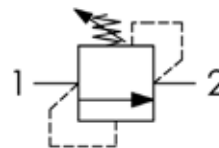
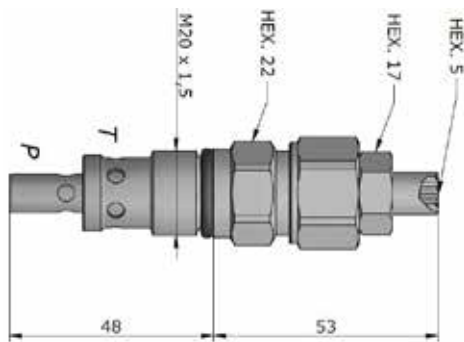
Note: pay attention to flow direction!



OLEWEB
MADE IN EUROPE

Cartridge Relief Valve M20 Cavity

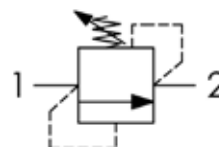
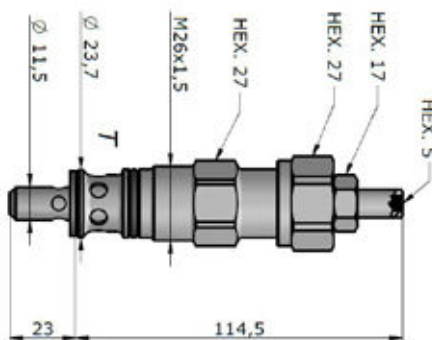
Part #	List Price \$	Max Pressure	Max Flow	Pressure Adjustment Range	Relief Type
DRV-M20-02-055-N-H	114.00	350 bar	30 lpm	5-55 bar	Direct acting
DRV-M20-02-110-N-H	114.00	350 bar	30 lpm	25-110 bar	Direct acting
DRV-M20-02-215-N-H	114.00	350 bar	30 lpm	50-215 bar	Direct acting
DRV-M20-02-350-N-H	114.00	350 bar	30 lpm	100-350 bar	Direct acting
CPS-M20	28.00	Steel cavity blanking plug			



MADE IN EUROPE

Cartridge Relief Valve M26 Cavity

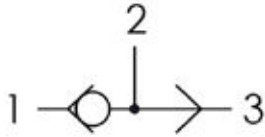
Part #	List Price \$	Max Pressure	Max Flow	Pressure Adjustment Range	Relief Type
DRV-M26-01-055-N-H	151.00	350 bar	80 lpm	5-55 bar	Direct acting
DRV-M26-01-110-N-H	151.00	350 bar	80 lpm	25-110 bar	Direct acting
DRV-M26-01-250-N-H	151.00	350 bar	80 lpm	75-250 bar	Direct acting
CPS-M26	37.00	Steel cavity blanking plug			



MADE IN EUROPE

Cartridge Load Shuttle Valve

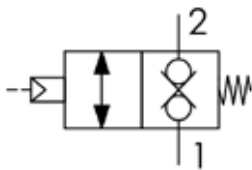
Part #	List Price \$	Cavity	Max Flow	Max Pressure
SV08	63.00	SAE 08-3	15 lpm	350 bar
SV10	69.00	SAE 10-3	30 lpm	350 bar



OLEOWEB
MADE IN EUROPE

Pneumatic Pilot Valve

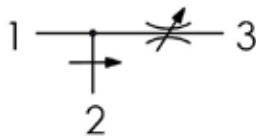
Part #	List Price \$	Cavity	Max Flow	Max Pressure
VPN6	200.00	SAE 08-2	40 lpm	350 bar



OLEOWEB
MADE IN EUROPE

Priority Flow Control Cartridge Valve Pressure Compensated

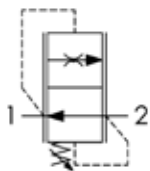
Part #	List Price \$	Cavity	Max Flow	Regulated Max Flow	Max Pressure
CP10	391.00	SAE 10-3	50 lpm	30 lpm	350 bar



OLEOWEB
MADE IN EUROPE

Flow Control Cartridge Valve Pressure Compensated

Part #	List Price \$	Cavity	Controlled Flow		Max Pressure
			Min	Max	
VCF63C	99.00	SAE 08-2	1.3 lpm	5.1 lpm	350 bar
VCF65C	99.00	SAE 08-2	2.6 lpm	9.1 lpm	350 bar
VCF67C	99.00	SAE 08-2	4 lpm	14.4 lpm	350 bar
12000354	20.00		Hand knob adjustment for VCF6		



OLEOWEB
MADE IN EUROPE

Bidirectional Flow Control Cartridge

Part #	List Price \$	Cavity	Max Flow	Max Pressure
VBF6C	56.00	SAE 08-2	30 lpm	350 bar
VBF6V	69.00	SAE 08-2	30 lpm	350 bar

VBF6C



VBF6V



OLEOWEB
MADE IN EUROPE

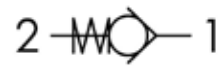
Single Acting Pilot Operated Check Valve Cartridge

Part #	List Price \$	Cavity	Max Flow	Max Pressure	Pilot Ratio
VPR08	99.00	SAE 08-2	15 lpm	350 bar	1:2.5
VPR10	106.00	SAE 10-2	30 lpm	350 bar	1:2.5



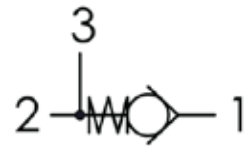
Cartridge Check Valve

Part #	List Price \$	Cavity	Cracking Pressure	Max Flow	Max Pressure
CUR6SP1	48.00	SAE 08-2	1 bar	25 lpm	350 bar
CUR6SP3	50.00	SAE 08-2	3 bar	25 lpm	350 bar
CUR6SP45	50.00	SAE 08-2	4.5 bar	25 lpm	350 bar



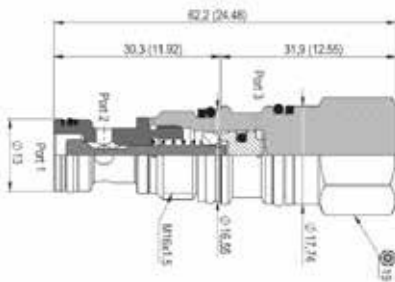
Pilot Cartridge Check Valve

Part #	List Price \$	Cavity	Cracking Pressure	Auxiliary Port	Max Flow	Max Pressure
CUR6SP1M	50.00	SAE 08-2	1 bar	1/4" BSPP	25 lpm	350 bar



Pilot Check Valve Internal Pilot T-163-A Cartridge Valves

Part #	List Price \$	Cavity	Max Flow	Max Pressure	Cracking Pressure	Pilot Ratio
NEW PO163S-013PS	116.00	T-163-A	30 lpm	350 bar	2 bar	3:1

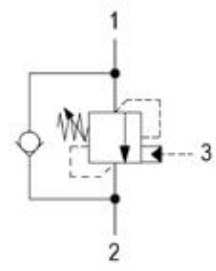
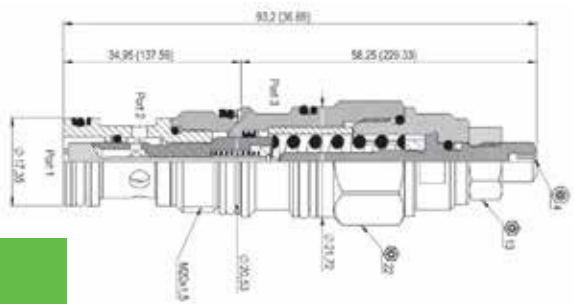


INLINE & CARTRIDGE VALVES

CARTRIDGE VALVES & CARTRIDGE VALVE MANIFOLDS

Counter Balance Valve Internal Vent T-11A Cartridge Valve

Part #	List Price \$	Cavity	Max Flow	Max Pressure	Pressure Range	Pilot Ratio
NEW OW11AS-O13PS	227.00	T-11A	60 lpm	350 bar	70-280 bar	3:1



OLEOWEB
MADE IN EUROPE

Valve preset at 210 bar

Pilot Check Valve Internal Pilot T-11A Cartridge Valve

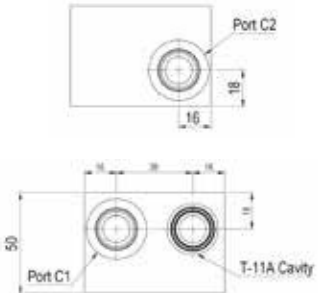
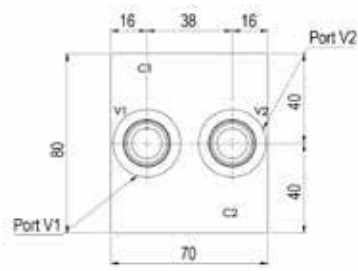
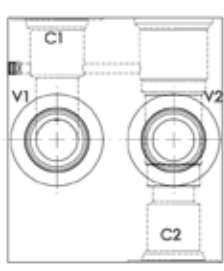
Part #	List Price \$	Cavity	Max Flow	Max Pressure	Cracking Pressure	Pilot Ratio	Piston Seal
NEW PO11AS-O23GPS	500.00	T-11A	60 lpm	350 bar	2 bar	3:1	Yes



OLEOWEB
MADE IN EUROPE

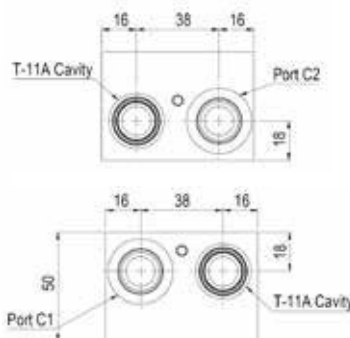
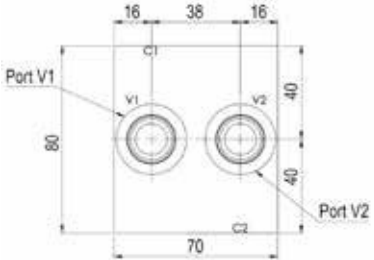
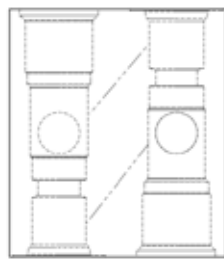
Single Cartridge Manifold

Part #	List Price \$	Cavity	Ports	Max Flow Rate	Max Pressure	Material
NEW 3COR08S08201	185.00	1 x T-11A	3/4" UNO	60 lpm	210 bar	Aluminium



Dual Cartridge Manifold

Part #	List Price \$	Cavity	Ports	Max Flow Rate	Max Pressure	Material
NEW 3COR08S08200	191.00	2 x T11A	3/4" UNO	60 lpm	210 bar	Aluminium



Cylinder pipe kits - page 27

Cartridge Hand Pump

Part #	List Price \$	Handle Style	Cavity	Displacement	Max Pressure
PME10	392.00	Lever	SAE10-2	0.6 cc	200 bar
PME5P	162.00	Push knob	SAE08-2	0.6 cc	50 bar

Note: PME10 is supplied with 500mm lever



PME10



PME5P

OLEOWEB
MADE IN EUROPE

Inline Cartridge Hand Pump

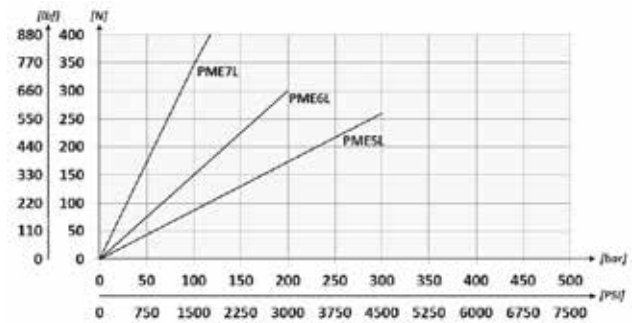
Part #	List Price \$	Displacement	Max Pressure
PME6L	126.00	0.6 cc	200 bar
62200023	114.00	Manifold to suit PME06L - 1/4" BSPP ports, 200 bar max pressure	



62200023



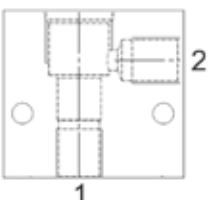
PME6L



OLEOWEB
MADE IN EUROPE

Cartridge Manifold

Part #	List Price \$	Cavity	Ports	Max Pressure	Material
62200357	70.00	SAE 08-3	1/4" BSPP	210 bar	Aluminium
62200358	73.00	SAE 08-3	3/8" BSPP	210 bar	Aluminium
62200032	70.00	SAE 08-2	1/4" BSPP	350 bar	Steel
62200051	72.00	SAE 08-2	3/8" BSPP	350 bar	Steel
62200373	113.00	SAE 10-3	3/8" BSPP	210 bar	Aluminium
62200374	126.00	SAE 10-3	1/2" BSPP	210 bar	Aluminium
62200451	158.00	SAE 10-2	3/8" BSPP	350 bar	Steel
62200452	158.00	SAE 10-2	1/2" BSPP	350 bar	Steel
62200419	211.00	SAE 12-2	3/4" BSPP	350 bar	Steel
62200420	304.00	SAE 12-2	1" BSPP	350 bar	Steel



OLEOWEB
MADE IN EUROPE

