

CATFORD

Jamestown

SA 5491

ENGINEERING PRODUCTS

All Prices Excluding GST

Phone: 0418 641 566

www.catford.com.au sales@catford.com.au

Hydraulic Motors

*BMM, BMP & BMPH Gerotor Motors

*BMR, BMRS, BMSY, BMV & BMT Geroler Motors

*Hydraulic Brakes & Motor Valves





Lot 25, Mannanarie Road, Jamestown, South Australia 5491

PO Box 178, Jamestown, South Australia 5491



0418 641 566



sales@catford.com.au

Due to fluctuations in the Australian dollar and the economic climate, please be advised that all prices are subject to change.
Please contact us to confirm pricing.

All prices stated within are exclusive of GST
(All prices are correct as of January 1st 2026, but Catford Engineering reserve the right to change these prices without notice)

Hydraulic Motors

CATFORD Jamestown
SA 5491
ENGINEERING
PRODUCTS

Phone: 0418 641 566

www.catford.com.au sales@catford.com.au

HYDRAULIC MOTORS

CATFORD
ENGINEERING
HYDRAULIC PRODUCTS



Model	Series	Porting	Shaft	Mounting	Options
203	203	203	203	203	203
205	205	205	205	205	205
219	219	219	219	219	219
237	237	237	237	237	237
253	253	253	253	253	253
255	255	255	255	255	255
259	259	259	259	259	259
260	260	260	260	260	260
262	262	262	262	262	262



MOTOR CROSS
REFERENCE CHART

203

Gerotor Motors

205

Geroler Motors

219



Disc Valve Motors

237

Motor Brakes

253

Hydraulic Motor
Valves

255

Steering Orbitals

259

Steering Orbital
Valves & Accessories

260

Axial Piston Motors

262

M+S Series		HydNet	Bosch Rexroth	Brevini/Sam	Danfoss	Eaton Char Lynn	Parker	Ross/TRW	White	
GEROTOR MOTORS	MM Page 205		BMM (EU)	MGX	BGM	OMM			WM (125/126)	
	MLHM Page 207		BMM (US)			OMM (US)	J Series			
	MP Page 209		BMP	MGP/GMP	BGE	OMP		MF	WP (155)	
	MPYN Page 211					OMPX				
	MLHP Page 213					OMP (US)				
	HP Page 215		BMPH		BH	DH	H Series	TB	MG	WD (145)
	PL Page 217							TE		
	MR Page 219		BMR	MGR/GMR	BRE	OMR				WR (255)
	MRYN Page 221					OMRX				
	MLHR Page 223					OMR (US)				
GEROLER MOTORS	HR Page 225		BMRS		BS	DS	S,T Series			WG
	RL Page 227							TE	MB	RS (200)


M+S Series		HydNet	Bosch Rexroth	Brevini/Sam	Danfoss	Eaton Char Lynn	Parker	Ross/TRW	White	
GEROLER MOTORS	MH Page 229				OMH					
	MLHH Page 231									
	RW Page 233			MGRW	OMEW					
	HW Page 235						TG		RE (500)	
	MS Page 237		BMSY (EU)	MGS/GMS	HR	OMS			WS	
DISC VALVE MOTORS	MLHS Page 239		BMSY (US)		HRS	OMS (US)	2000 Series	TG	ME	RE (500)
	MYZ Page 241					4000 Series			MJ	
	MT Page 243		BMT	MGT/GMT	HT	OMT				
	MLHT Page 245					OMT (US)				
	MTM Page 247					TMT	6000 Series			
	MV Page 249		BMV	MGV/GMV		OMV				
	MLHV Page 251					OMT (US)				

**TECH
DATA**

MM Series Gerotor Motor

Standard Pricing: Shaft 16mm Straight Keyed, Mount 3-bolt, Ports 3/8" BSPP Rear, Case 1/8" BSPP

Part #	List Price \$	DISPLACEMENT	ROTOR	SPEED	FLOW	PRESSURE DROP	INLET PRESSURE	TORQUE	WEIGHT
		(cc)	Width L1 (mm)	Max. Cont. (RPM)	Max. Cont. (L/min)	Max. Cont. (Bar)	Max. Cont. (Bar)	Max. Cont. (Nm)	(Kg)
MM 8 C	473.00	8.2	3.5	1950	16	100	140	11	2
MM 12.5 C	483.00	12.5	5.5	1550	20	100	140	16	2.1
MM 20 C	494.00	19.9	8.5	1000	20	100	140	25	2.2
MM 32 C	504.00	31.6	13.5	630	20	100	140	40	2.3
MM 40 C	599.00	39.8	17	500	20	90	140	45	2.4
MM 50 C	662.00	50	21	400	20	70	140	46	2.6

 To ensure best motor life, fill with fluid and run at moderate load for 5-10 minutes

Equivalent to:

BMM (EU) Hydnet

MGX Bosch Rexroth

BGM Brevini

OMM Danfoss

WM(125/126) White



Seal Kits

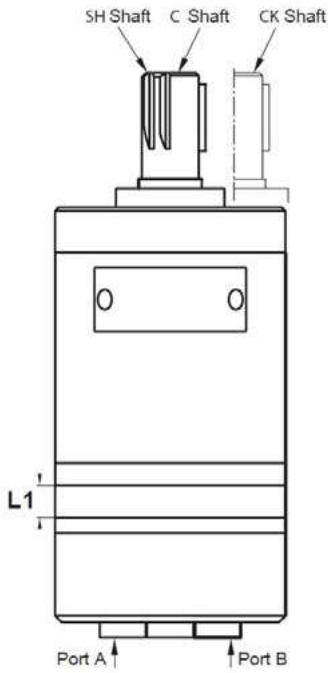
Part #	List Price \$	Pressure Rating without Drain Line
MM-SKD	116.00	140 bar ≤100 RPM
MM-SKV	294.00	140 bar ≤100 RPM

Nomenclature

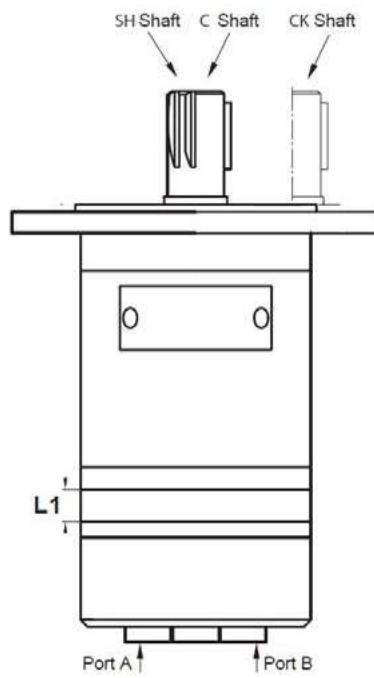
MM	OPTION			MOUNTING A			PORTS			DISP.	SHAFTS			MOUNTING B		
	Code	Description	\$	Code	Description	\$	Code	Description	\$		8-50cc	Code	Description	\$	Code	Description
	D	Dual crossline Relief	95	-	Round 3-bolt 31.5mm spigot	-	-	Rear ports 3/8" BSPP	-		C	16mm keyed	-	-5	Round 5-bolt M6	53
				F	Oval 2-bolt 63mm spigot	32	S	Side ports 3/8" BSPP	-		CK	14mm keyed	-	RS SHL5	Universal speed sensor 5m lead	420
											SH	16.5mm 9T splined	21			



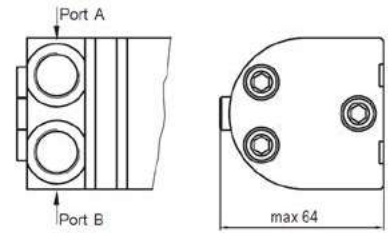
MM Standard MM Series



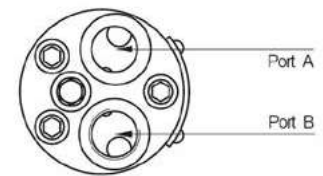
MMF MMF Series



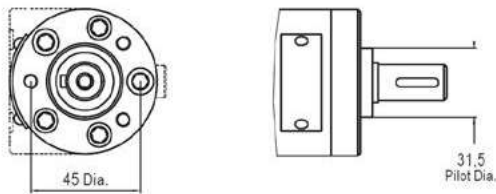
S Side Ports



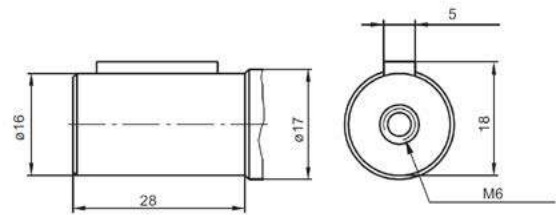
- Standard Rear Ports



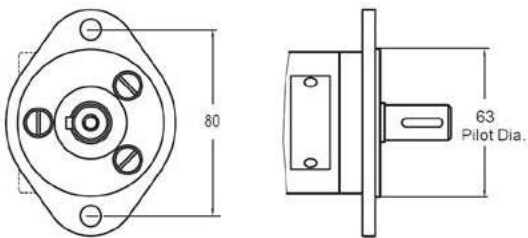
- Standard Mount M6 3-bolt



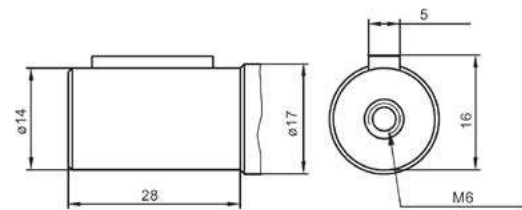
C 16mm Keyed Shaft



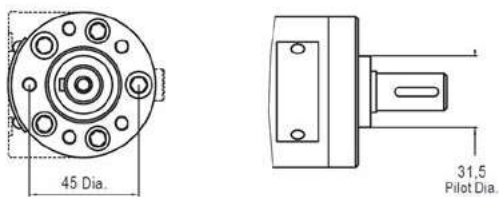
F Oval Mount 2-bolt



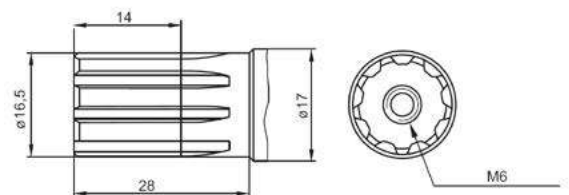
CK 14mm Keyed Shaft



-5 Mount M6 5-bolt



SH 16.5mm 9T Splined Shaft




**TECH
DATA**

MLHM Series Gerotor Motor

Standard Pricing: Shaft 5/8" Straight Keyed, Mount 3-bolt, Ports 9/16" UNF Rear, Case 3/8" UNF

Part #	List Price \$	DISPLACEMENT	ROTOR	SPEED	FLOW	PRESSURE DROP	INLET PRESSURE	TORQUE	WEIGHT
		(cc)	Width L1 (mm)	Max. Cont. (RPM)	Max. Cont. (L/min)	Max. Cont. (Bar)	Max. Cont. (Bar)	Max. Cont. (Nm)	(Kg)
MLHM 8 C7	473.00	8.2	3.5	1950	16	100	140	11	2
MLHM 12.5 C7	483.00	12.5	5.5	1550	20	100	140	16	2.1
MLHM 20 C7	494.00	19.9	8.5	1000	20	100	140	25	2.2
MLHM 32 C7	504.00	31.6	13.5	630	20	100	140	40	2.3
MLHM 40 C7	599.00	39.8	17	500	20	90	140	45	2.4
MLHM 50 C7	662.00	50	21	400	20	70	140	46	2.6

 To ensure best motor life, fill with fluid and run at moderate load for 5-10 minutes

Equivalent to:

BMM (US) Hydnet

OMM Danfoss

J-Series Eaton Char Lynn



Seal Kits

Part #	List Price \$	Pressure Rating without Drain Line
MLHM-SK	116.00	140 bar ≤100 RPM

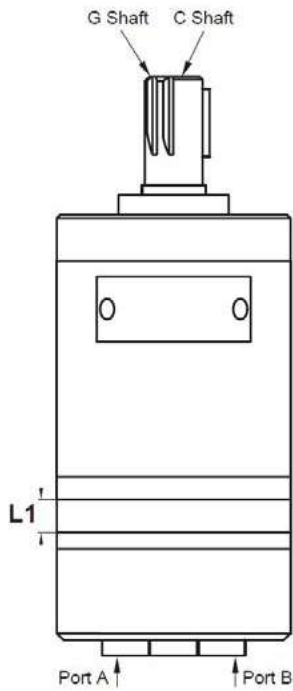
Nomenclature

MLHM	MOUNTING A			DISP.	SHAFTS			PORTS			OPTION			MOUNTING B		
	Code	Description	\$		Code	Description	\$	Code	Description	\$	Code	Description	\$	Code	Description	\$
-	Round 3-bolt 31.5mm spigot	-	8-50cc	C	5/8" straight keyed	-	7	Rear ports 9/16" UNF	-	D	Dual crossline relief	95	-5	Round 5-bolt 1/4" UNF	53	
F	Oval 2-bolt 63mm spigot	32		G	16.5mm 9T splined	21	4	Side ports 9/16" UNF	-							



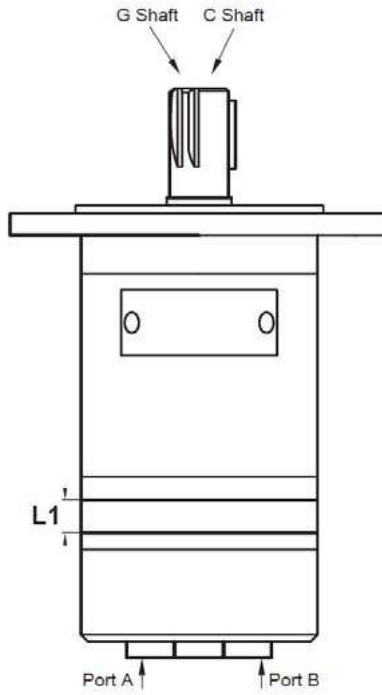
MLHM

Standard MLHM Series



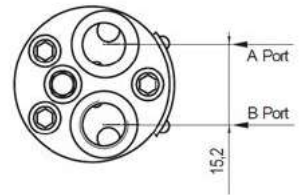
MLHMF

MLHMF Series



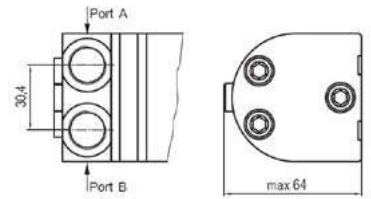
7

Rear Ports



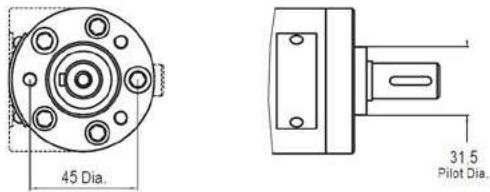
S

Side Ports



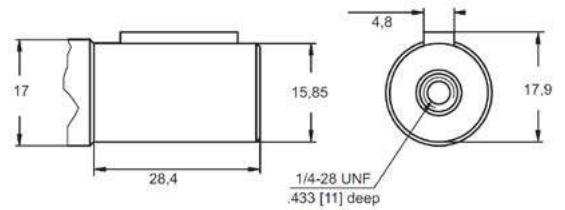
-

Standard Mount 1/4" UNF 3-bolt



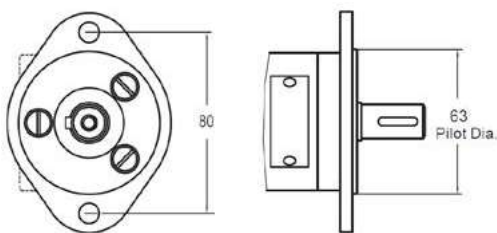
C

5/8" Straight Keyed Shaft



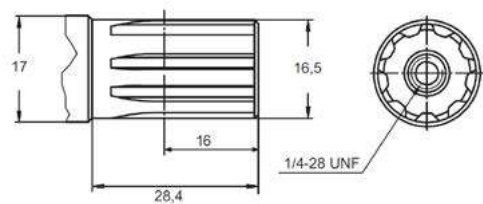
F

Oval Mount 2-bolt



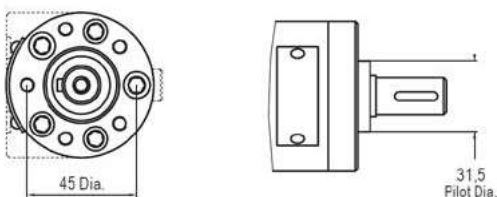
G

16.5mm 9T Splined Shaft



-5

Mount 1/4" UNF 5-bolt



**TECH
DATA**

MP Series Gerotor Motor

Standard Pricing: Shaft 1" Straight Keyed, Mount SAE A 2-bolt, Ports 1/2" BSPP, Case 1/4" BSPP

Part #	List Price \$	DISPLACEMENT	ROTOR	SPEED	FLOW	PRESSURE DROP	INLET PRESSURE	TORQUE	WEIGHT
		(cc)	Width L1 (mm)	Max. Cont. (RPM)	Max. Cont. (L/min)	Max. Cont. (Bar)	Max. Cont. (Bar)	Max. Cont. (Nm)	(Kg)
MPN 25 COD	725.00	28.4	5.2	1408	40	100	175	33	6.1
MPN 32 COD	735.00	34.5	6.3	1450	50	100	175	43	6.1
MPN 40 COD	735.00	40.5	7.4	1480	60	120	175	62	6.2
MPN 50 COD	746.00	49.5	6.67	1210	60	140	175	94	6.3
MPN 60 COD	756.00	59.5	8.25	983	60	140	175	110	6.3
MPN 80 COD	756.00	79.2	10.67	755	60	140	175	151	6.4
MP 100 COD	672.00	99	13.33	605	60	140	175	193	6.6
MP 125 COD	693.00	123.8	16.67	486	60	140	175	237	6.7
MP 160 COD	714.00	158.4	21.33	378	60	140	175	313	6.9
MP 200 COD	735.00	198	26.67	303	60	140	175	366	7.1
MP 250 COD	756.00	247.5	33.33	242	60	110	175	380	7.3
MP 315 COD	777.00	316.8	42.67	190	60	90	175	380	7.6
MP 400 COD	798.00	396	53.33	150	60	70	175	360	8.2
MP 500 COD	966.00	495	66.63	120	60	60	140	390	9.4
MP 630 COD	1124.00	623.6	84	95	60	55	140	440	10.1

 To ensure best motor life, fill with fluid and run at moderate load for 5-10 minutes

Equivalent to:

BMP Hydnet
MGP/GMP Bosch Rexroth
BGE Brevini
OMP Danfoss
MF Ross/TRW
WM(155) White



Seal Kits

Part #	List Price \$	Pressure Rating without Drain Line
MP-SKD	116.00	150 bar ≤100 RPM
MPQ-SKD	116.00	150 bar ≤100 RPM
MP-SKU	116.00	200 bar ≤200 RPM
MPQ-SKU	116.00	200 bar ≤200 RPM
MP-SKV	357.00	150 bar ≤100 RPM
MP-SKB	116.00	100 bar ≤100 RPM

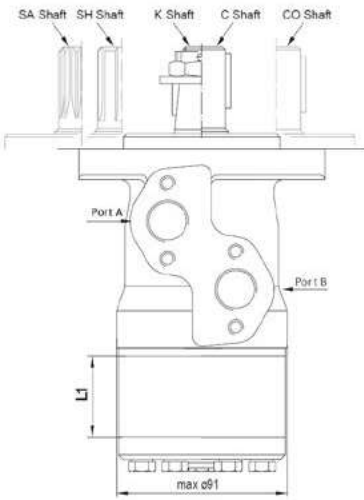
Nomenclature

MP	MOUNTING			OPTIONS			DISP.	SHAFTS			SHAFT SEALS		
	Code	Description	\$	Code	Description	\$		25-630cc	Code	Description	\$	Code	Description
-	SAE A 2-bolt 82.5mm spigot	-	N	Needle bearings	95	CO	1" straight keyed	-	D	150 Bar *	-		
Q	Square 4-bolt 44.4mm spigot	53	E	Rear ports 1/2" BSPP	63	C	25mm straight keyed	-	U	200 Bar * +	32		
F	Magneto 4-bolt 82.5mm spigot	42				CB	32mm straight keyed	53	V	150 Bar viton *	105		
W	Wheel mount 80mm spigot	179				SH	1" 6B splined	21	RS SHL5	Universal speed sensor 5m lead	441		
WF	Sweepers special mount	210				HB	1.1/4" 14T splined	63	ST	Electronic speed sensor	1523		
						K	28.56mm 1:10 tapered	42					
						KB	35mm 1:10 tapered	53					

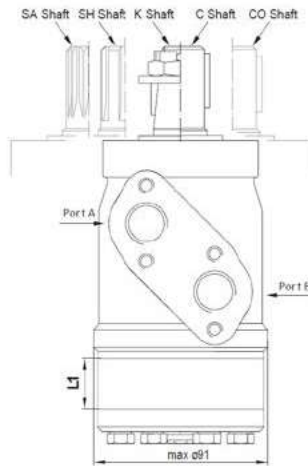
* Refer to specifications for performance data
+ U seal cannot be used with needle bearings



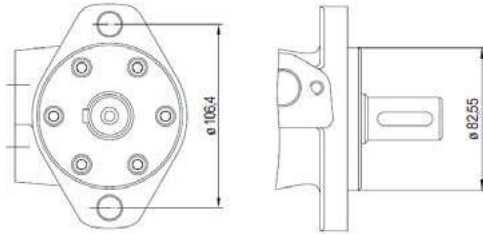
MP Standard MP Series



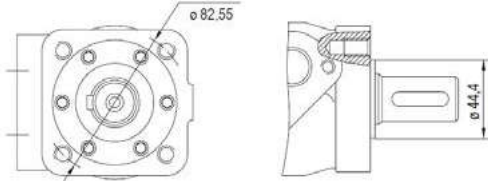
MPQ MPQ Series



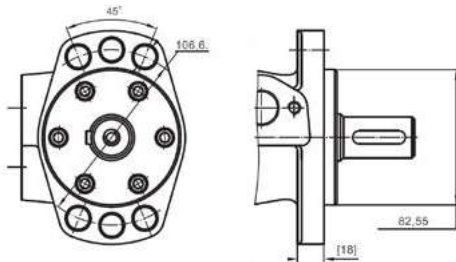
Standard Mount SAE A 2-bolt



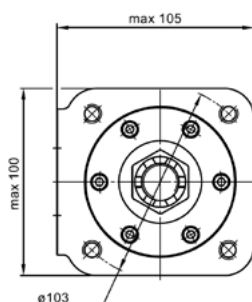
Q Mount M10 4-bolt



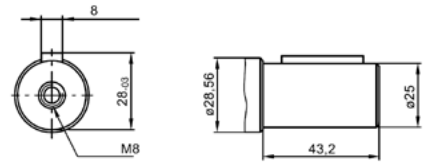
F Magneto Mount



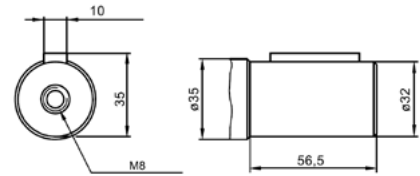
W Wheel Mount



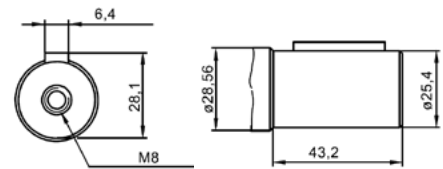
C 25mm Straight Keyed Shaft



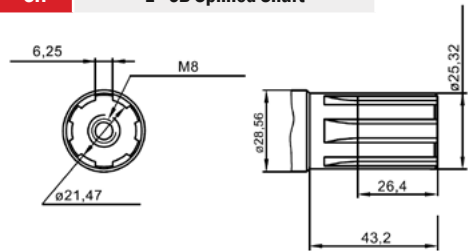
CB 32mm Straight Keyed Shaft



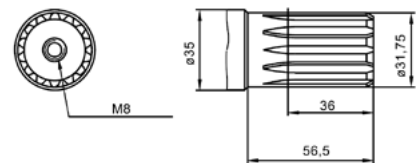
C0 1" Straight Keyed Shaft



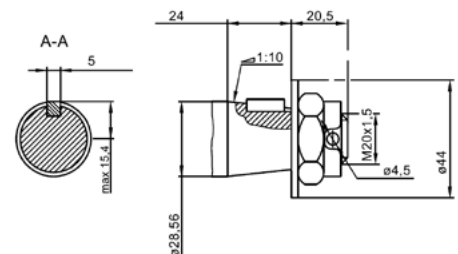
SH 1" 6B Splined Shaft



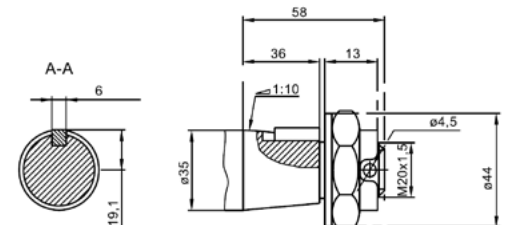
HB 1.1/4" 14T Splined Shaft



K 28.56mm 1:10 Tapered Shaft



KB 35mm 1:10 Tapered Shaft




**TECH
DATA**

MPYN Series Gerotor Motor

Standard Pricing: Shaft 1" Straight Keyed, Mount SAE A 2-bolt, Ports 1/2" BSPP, Case 1/4" BSPP, Needle Bearings, 200 bar Shaft Seal

Part #	List Price \$	DISPLACEMENT	ROTOR	SPEED	FLOW	PRESSURE DROP	INLET PRESSURE	TORQUE	WEIGHT	
		(cc)	Width L1 (mm)	Max. Cont. (RPM)	Max. Cont. (L/min)	Max. Cont. (Bar)	Max. Cont. (Bar)	Max. Cont. (Nm)	(Kg)	
MPYN 25	756.00	28.4	5.20	1400	40	115	200	43	6.1	NEW
MPYN 32	764.00	34.5	6.30	1440	50	115	200	52	6.1	NEW
MPYN 40	767.00	40.5	7.40	1480	60	115	200	62	6.2	NEW
MPYN 50	777.00	49.5	6.67	1210	60	160	200	107	6.3	NEW
MPYN 80	788.00	79.2	10.67	750	60	160	200	170	6.4	NEW
MPYN 100	798.00	99.0	13.33	600	60	160	200	212	6.6	NEW
MPYN 125	819.00	123.8	16.67	480	60	160	200	265	6.7	NEW
MPYN 160	840.00	158.4	21.33	375	60	160	200	338	6.9	NEW
MPYN 200	861.00	198.0	26.67	300	60	100	200	300	7.1	NEW
MPYN 250	882.00	247.5	33.33	240	60	90	200	300	7.3	NEW
MPYN 315	903.00	316.8	42.67	185	60	70	200	290	7.6	NEW
MPYN 400	924.00	396.0	53.33	155	60	55	200	290	8.2	NEW

 To ensure best motor life, fill with fluid and run at moderate load for 5-10 minutes

Equivalent to:

N/A



Seal Kits

Part #	List Price \$	Pressure Rating without Drain Line
MPYN-SK	116.00	200 bar ≤200 RPM

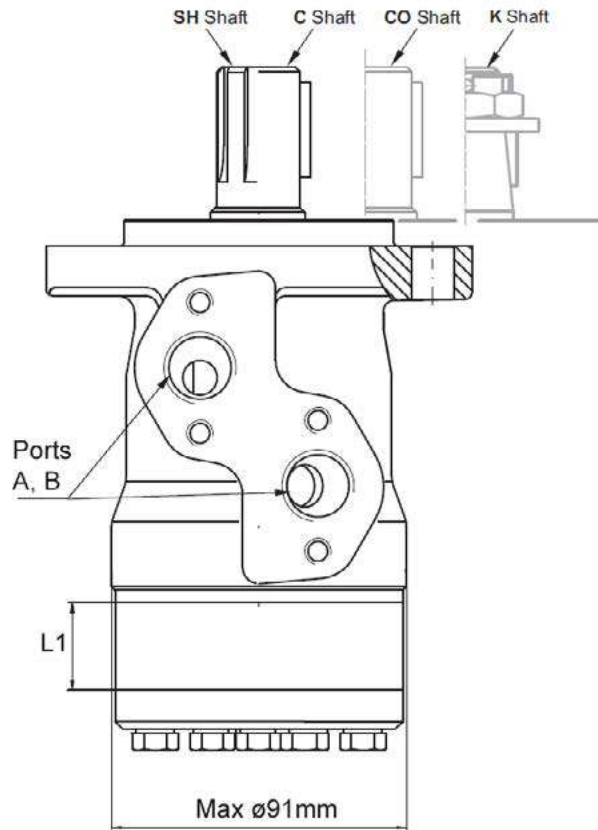
Nomenclature

MP	PORTS			DISPLACEMENT	SHAFTS		
	Code	Description	\$		Code	Description	\$
				25-400cc			
	-	Side Ports	-		CO	1" straight keyed	-
	E	Rear Ports	63		C	25mm straight keyed	-
					K	28.56mm 1:10 tapered	42
					SH	1" 6B splined	21

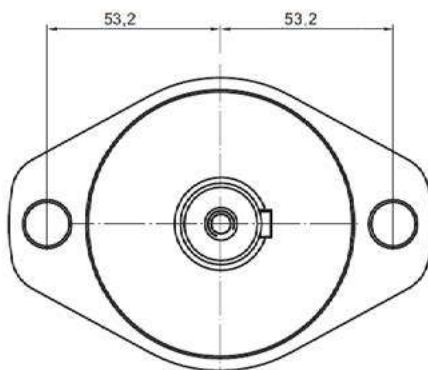


MPYN

Standard MPYN Series

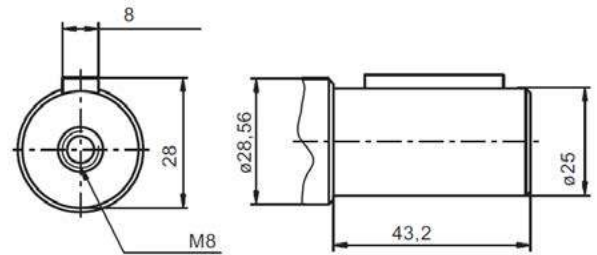


Standard Mount SAE A 2-bolt



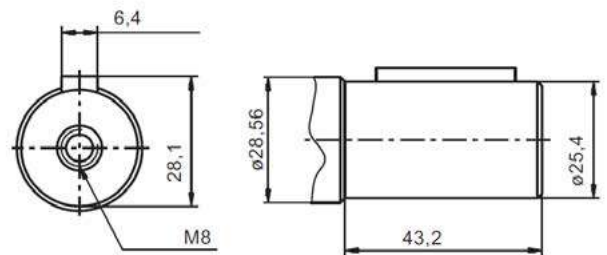
C

25mm Straight Keyed Shaft



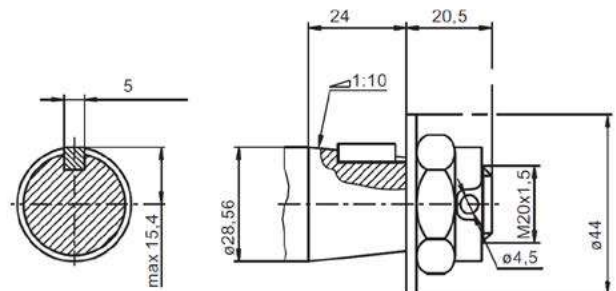
CO

1" Straight Keyed Shaft



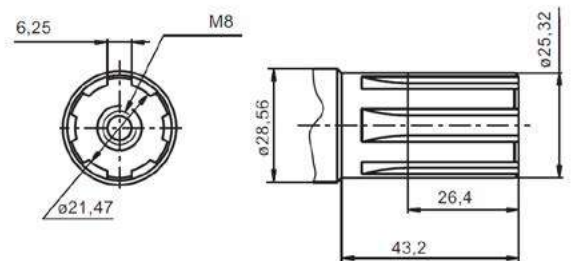
K

28.56 1:10 Tapered shaft



SH

1" 6B Splined Shaft



**TECH
DATA**

MLHP Series Gerotor Motor

Standard Pricing: Shaft 1" Straight Keyed, Mount SAE A 2-bolt, Ports 7/8" UNF, Case 7/16" UNF

Part #	List Price \$	DISPLACEMENT	ROTOR	SPEED	FLOW	PRESSURE DROP	INLET PRESSURE	TORQUE	WEIGHT
		(cc)	Width L1 (mm)	Max. Cont. (RPM)	Max. Cont. (L/min)	Max. Cont. (Bar)	Max. Cont. (Bar)	Max. Cont. (Nm)	(Kg)
MLHP 25 CN4	725.00	28.4	5.2	1408	40	100	175	33	6.1
MLHP 32 CN4	735.00	34.5	6.3	1450	50	100	175	43	6.1
MLHP 40 CN4	735.00	40.5	7.4	1480	60	120	175	62	6.2
MLHP 50 CN4	746.00	49.5	6.67	1210	60	140	175	94	6.3
MLHP 60 CN4	756.00	59.5	8.25	983	60	140	175	110	6.3
MLHP 80 C4U	662.00	79.2	10.67	755	60	140	175	151	6.4
MLHP 100 C4U	672.00	99	13.33	605	60	140	175	193	6.6
MLHP 125 C4U	693.00	123.8	16.67	486	60	140	175	237	6.7
MLHP 160 C4U	714.00	158.4	21.33	378	60	140	175	313	6.9
MLHP 200 C4U	735.00	198	26.67	303	60	140	175	366	7.1
MLHP 250 C4U	756.00	247.5	33.33	242	60	110	175	380	7.3
MLHP 315 C4U	777.00	316.8	42.67	190	60	90	175	380	7.6
MLHP 400 C4U	798.00	396	53.33	150	60	70	175	360	8.2
MLHP 500 C4U	966.00	495	66.63	120	60	60	140	390	9.4
MLHP 630 C4U	1124.00	623.6	84	95	60	55	140	440	10.1

✂ CN (25-60cc) have needle bearings as standard

✂ To ensure best motor life, fill with fluid and run at moderate load for 5-10 minutes

Equivalent to:

OMP (US) Danfoss



Seal Kits

Part #	List Price \$	Pressure Rating without Drain Line
MLHP-SKD	116.00	150 bar ≤100 RPM
MLHPQ-SKD	116.00	150 bar ≤100 RPM
MLHP-SKU	116.00	200 bar ≤200 RPM
MLHPQ-SKU	116.00	200 bar ≤200 RPM

Nomenclature

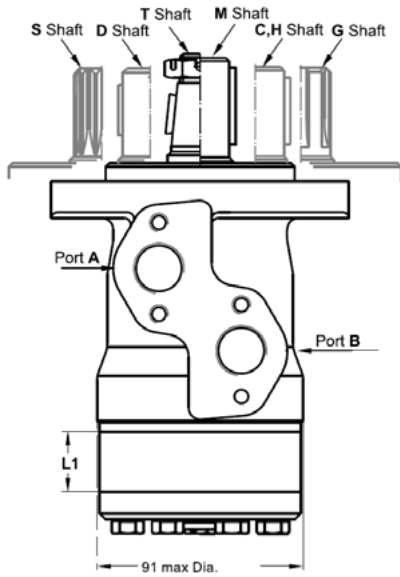
MLHP	MOUNTING			DISP.	SHAFTS			OPTIONS			PORTS			SHAFT SEALS			MacDon	
	Code	Description	\$		Code	Description	\$	Code	Desc.	\$	Code	Desc.	\$	Code	Desc.	\$	Code	\$
-	SAE A 2-bolt 82.5mm spigot	-	25-630cc	C	1" straight keyed	-	N	Needle bearings	95	4	Side ports 7/8" UNF	-	U	200 bar **	-	P-04D	189	
Q	Square 4-bolt 44.4mm spigot	53		H	1" straight cross hole 10.3mm hole	21				2	Side ports 1/2" BSPP	-	V	150 bar Viton *	105	P-08D	189	
F	Magneto 4-bolt 82.5mm spigot	42		G	1" 6B splined	21												

* Refer to specifications for performance data
+ U seal cannot be used with needle bearings



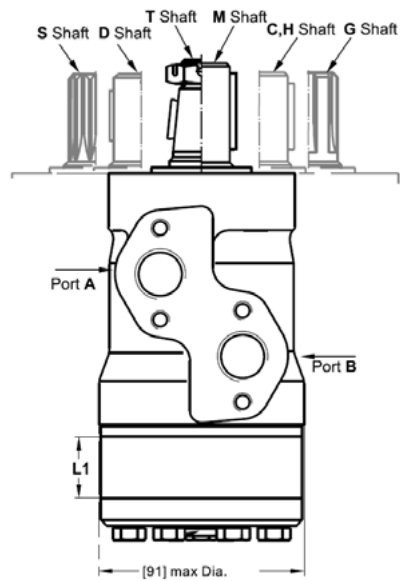
MLHP

Standard MLHP Series



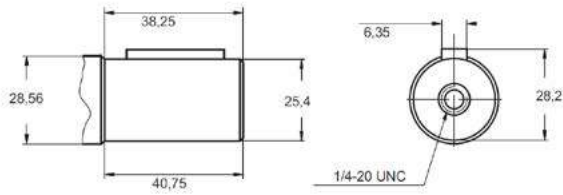
MLHPQ

MLHPQ Series

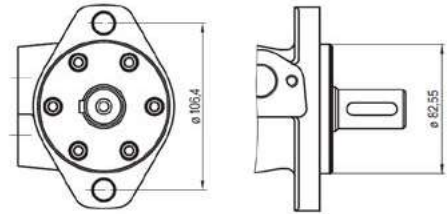


C

1" Straight Keyed Shaft

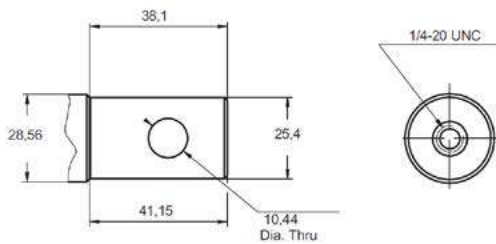


Standard Mount SAE A 2-bolt



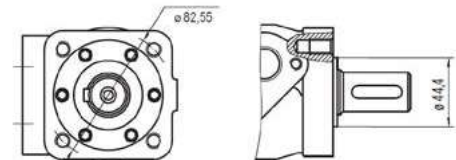
H

1" Straight Cross Hole 10.3mm



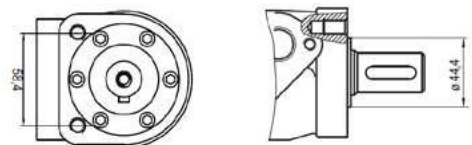
Q

Q Mount 3/8" UNC 4-bolt



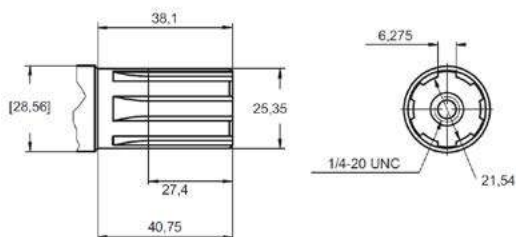
P-04D

MACDON Mount 3/8" UNC 2-bolt



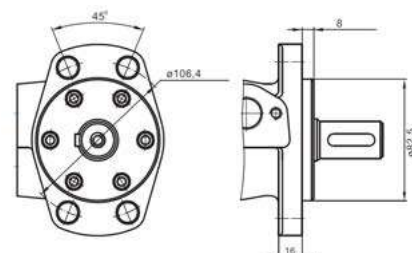
G

1" 6B Splined Shaft



F

Magneto 4-bolt Mount



**TECH
DATA**

HP Series Gerotor Motor

Standard Pricing: Shaft 1" Woodruff Keyed, Mount SAE A 2-bolt, Ports 7/8" UNF, Case 7/16" UNF

Part #	List Price \$	DISPLACEMENT	ROTOR	SPEED	FLOW	PRESSURE DROP	INLET PRESSURE	TORQUE	WEIGHT
		(cc)	Width L1 (mm)	Max. Cont. (RPM)	Max. Cont. (L/min)	Max. Cont. (Bar)	Max. Cont. (Bar)	Max. Cont. (Nm)	(Kg)
HP 25 C4U	630.00	28.4	5.2	1055	30	100	140	33	5.5
HP 32 C4U	641.00	34.5	6.3	1160	40	125	140	52	5.5
HP 40 C4U	641.00	40.5	7.4	900	40	125	140	65	5.6
HP 50 C4U	651.00	49.5	6.67	909	45	125	140	81	5.7
HP 60 C4U	662.00	59.5	8.25	858	50	125	140	89	5.7
HP 80 C4U	662.00	79.2	10.67	758	60	125	140	129	5.8
HP 100 C4U	672.00	99	13.33	606	60	125	140	162	6
HP 125 C4U	693.00	123.8	16.67	485	60	125	140	202	6.1
HP 160 C4U	714.00	158.4	21.33	379	60	115	140	238	6.3
HP 200 C4U	735.00	198	26.67	303	60	105	140	271	6.5
HP 250 C4U	756.00	247.5	33.33	242	60	100	140	323	6.7
HP 315 C4U	777.00	316.8	42.67	189	60	90	140	372	7
HP 400 C4U	798.00	396	53.33	152	60	80	140	414	7.5

 To ensure best motor life, fill with fluid and run at moderate load for 5-10 minutes

Equivalent to:

BMPH Hydnet

BH Brevini

DH Danfoss

H-Series Eaton Char Lynn

TB Parker

MG Ross/TRW

WM(145) White



Seal Kits

Part #	List Price \$	Pressure Rating without Drain Line
HPN-SKD	116.00	150 bar ≤100 RPM
HPQN-SKD	116.00	150 bar ≤100 RPM
HPQ-SKUE	116.00	200 bar ≤200 RPM
HP-SKUE	116.00	200 bar ≤200 RPM

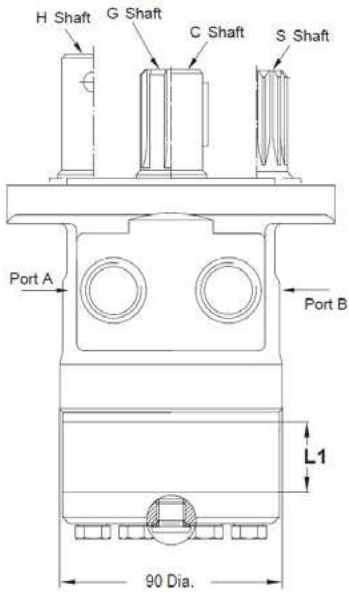
Nomenclature

HP		MOUNTING			OPTIONS			DISP.	SHAFTS			PORTS			SHAFT SEALS		
Code	Description	\$	Code	Description	\$	25-400cc	Code	Description	\$	Code	Description	\$	Code	Description	\$		
-	SAE A 2-bolt 82.5mm spigot	-	N	Needle bearings	95		C	1" straight woodruff keyed	-	4	Side ports 7/8" UNF	-	U	200 bar *	-		
Q	Square 4-bolt 44.4mm spigot	53					CW	25mm straight keyed	21	1	Manifold ports	32	V	150 bar Viton *	105		
							G	1" 6B splined	21								
							S	7/8" 13T splined	21								
							H	1" straight keyed 8mm cross hole	21								
							HE	1" straight keyed 10.3mm cross hole	53								
							TE	1" 1:8 tapered	53								

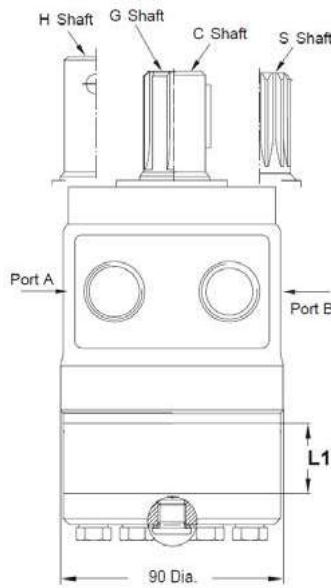
* Refer to specifications for performance data



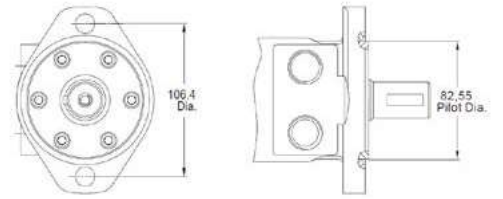
HP Standard HP Series



HPQ HPQ Series



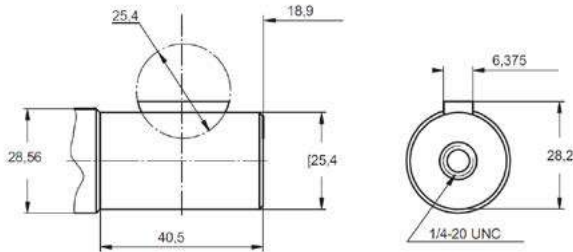
Standard Mount SAE A 2-bolt



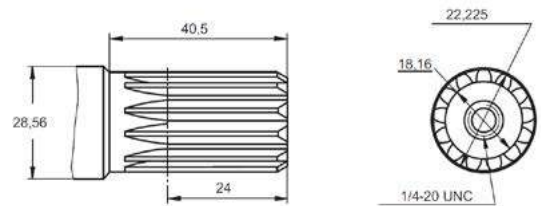
Q Mount 3/8" UNC 4-bolt



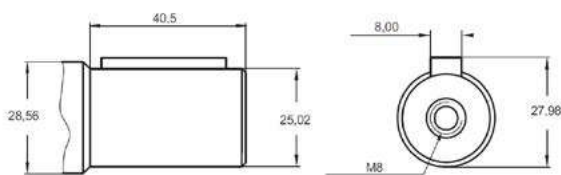
C 1" Straight Woodruff Keyed Shaft



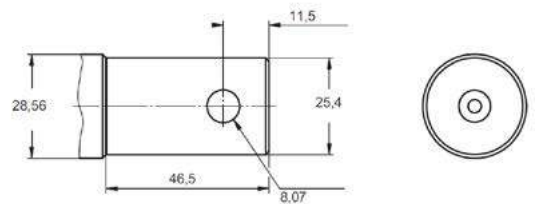
S 7/8" 13T Splined Shaft



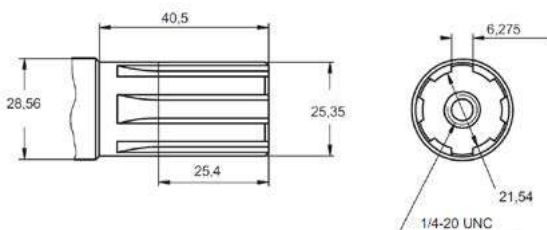
CW 25mm Straight Keyed Shaft



H 1" Keyed Shaft 8mm Cross Hole



G 1" 6B Splined Shaft



**TECH
DATA**

PL Series Gerotor Motor

Standard Pricing: Shaft 1" Straight Keyed, Mount SAE A 4-bolt, Ports 1/2" BSPP, Case 1/4" BSPP, Needle Roller Bearings

Part #	List Price \$	DISPLACEMENT	ROTOR	SPEED	FLOW	PRESSURE DROP	INLET PRESSURE	TORQUE	WEIGHT
		(cc)	Width L1 (mm)	Max. Cont. (RPM)	Max. Cont. (L/min)	Max. Cont. (Bar)	Max. Cont. (Bar)	Max. Cont. (Nm)	(Kg)
PL 40 COU	851.00	40	7.4	1500	60	120	175	62	7
PL 50 COU	851.00	49.5	6.67	1210	60	140	175	94	7
PL 80 COU	861.00	79.2	10.67	755	60	140	175	151	7.1
PL 100 COU	882.00	99	13.33	605	60	140	175	193	7.2
PL 125 COU	903.00	123.8	16.67	485	60	140	175	237	7.4
PL 160 COU	914.00	158.4	21.33	378	60	140	175	313	7.6
PL 200 COU	945.00	198	26.67	303	60	140	175	366	7.8
PL 250 COU	966.00	247.5	33.33	242	60	140	175	470	8
PL 315 COU	987.00	316.8	42.67	190	60	120	175	486	8.3
PL 400 COU	1019.00	396	53.33	150	60	95	175	500	8.6

 To ensure best motor life, fill with fluid and run at moderate load for 5-10 minutes

Equivalent to:
TE Parker



Seal Kits

Part #	List Price \$	Pressure Rating without Drain Line
PL-SKU	116.00	100 bar ≤100 RPM

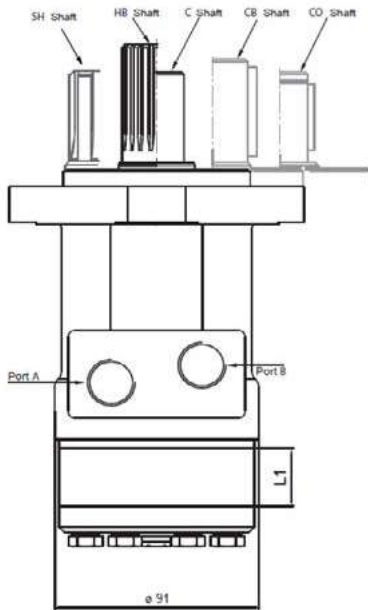
Nomenclature

PL	MOUNTING			DISP.	SHAFTS			PORTS			SHAFT SEALS		
	Code	Description	\$		Code	Description	\$	Code	Description	\$	Code	Description	\$
				40-400cc									
	A	SAE A 2-bolt 82.5mm spigot	21		CO	1" straight keyed	-	-	1/2" BSPP	-	U	200 bar *	-
	Q	Square 4-bolt 44.4mm spigot	32		C	25mm straight keyed	-	4	7/8" UNF	-	V	100 bar viton *	105
	F	Magneto 4-bolt 82.5mm spigot	42		CB	32mm straight keyed	53						
	-	SAE A 4-bolt 82.55mm spigot	-		SH	1" 6B splined	21						
					HB	1.1/4" 14T splined	84						

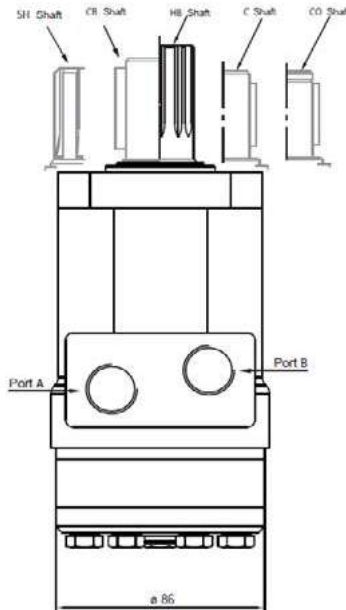
* Refer to specifications for performance data



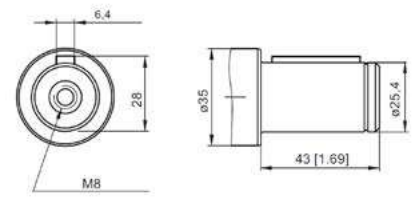
PL Standard PL Series



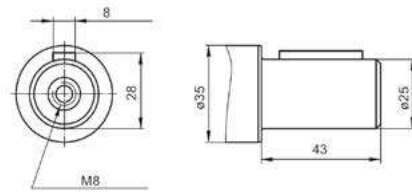
PLQ PLQ Series



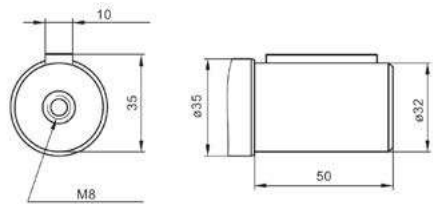
CO 1" Straight Keyed Shaft



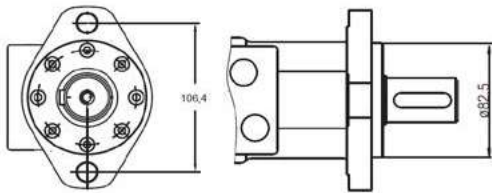
C 25mm Straight Keyed Shaft



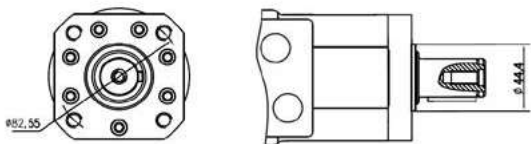
CB 32mm Straight Keyed Shaft



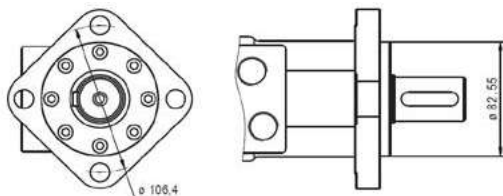
A A Mount SAE A 2-bolt



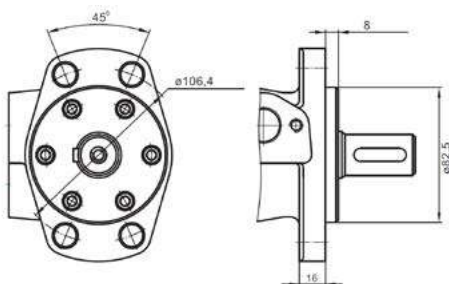
Q Q Mount 4-bolt



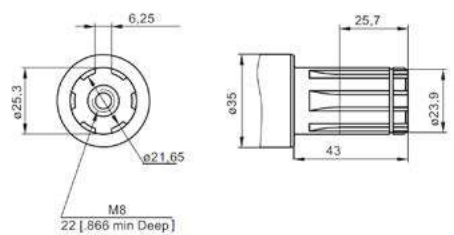
Standard Mount SAE A 4-bolt



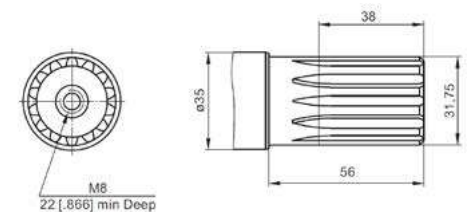
F Magneto 4-bolt Mount



SH 1" 6B Splined Shaft



HB 1.1/4" 14T Splined Shaft



**TECH
DATA**

MR Series Geroler Motor

Standard Pricing: Shaft 1" Straight Keyed, Mount SAE A 2-bolt, Ports 1/2" BSPP, Case 1/4" BSPP

Part #	List Price \$	DISPLACEMENT	ROTOR	SPEED	FLOW	PRESSURE DROP	INLET PRESSURE	TORQUE	WEIGHT
		(cc)	Width L1 (mm)	Max. Cont. (RPM)	Max. Cont. (L/min)	Max. Cont. (Bar)	Max. Cont. (Bar)	Max. Cont. (Nm)	(Kg)
MR 50 COD	798.00	51.5	9	775	40	140	175	100	7.2
MR 80 COD	819.00	80.3	14	750	60	175	175	200	7.4
MR 100 COD	830.00	99.8	17.4	600	60	175	175	240	7.6
MR 125 COD	851.00	125.7	21.8	475	60	175	175	300	7.9
MR 160 COD	872.00	159.6	27.8	375	60	175	175	390	8.3
MR 200 COD	903.00	199.8	34.8	300	60	140	175	385	8.6
MR 250 COD	924.00	250.1	43.5	240	60	110	175	390	9
MR 315 COD	945.00	315.7	54.8	190	60	85	175	360	9.5
MR 400 COD	977.00	397	69.4	150	60	65	175	380	10.3

🔧 To ensure best motor life, fill with fluid and run at moderate load for 5-10 minutes

Equivalent to:

BMR Hydnet

MGR/GMR Bosch Rexroth

BRE Brevini

OMR Danfoss

WR(255) White



Seal Kits

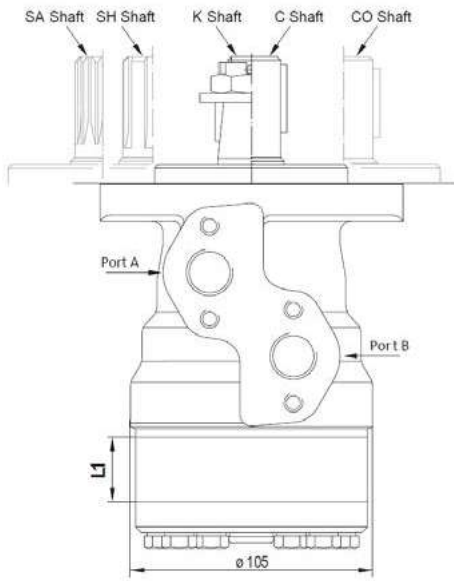
Part #	List Price \$	Pressure Rating without Drain Line
MR-SKD	116.00	150 bar ≤100 RPM
MRQ-SKD	116.00	150 bar ≤100 RPM
MR-SKU	116.00	200 bar ≤200 RPM
MRQ-SKU	116.00	200 bar ≤200 RPM
MR-SKB	116.00	100 bar ≤100 RPM

Nomenclature

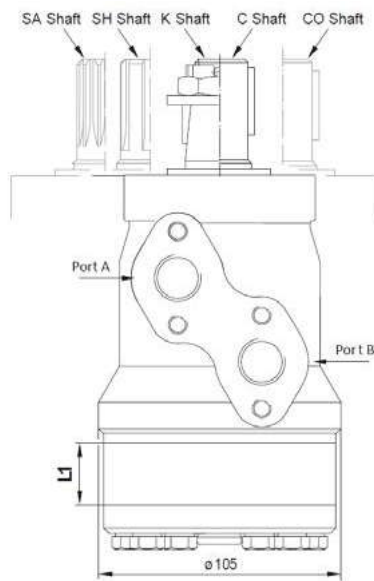
MR	MOUNTING			OPTIONS			DISP. 50-400cc	SHAFTS			SHAFT SEALS			SPEED SENSORS		
	Code	Description	\$	Code	Description	\$		Code	Description	\$	Code	Description	\$	Code	Description	\$
	-	SAE A 2-bolt 82.5mm spigot	-	N	Needle bearings	95		CO	1" straight keyed	-	D	150 bar *	-	RS SH	Speed sensor universal plug	431
	Q	Square 4-bolt 44.4mm spigot	53	E	Rear ports 1/2" BSPP	63		C	25mm straight keyed	-	U	200 bar *	32	B/MR	Brake	861
	F	Magneto 4-bolt 82.5mm spigot	42					CB	32mm straight keyed	53	V	150 bar viton *	105	T	Tacho connection	347
								SH	1" 6B splined	21	* Refer to specifications for performance data			RS SHL5	Speed sensor universal 5m lead	441
								HB	1.1/4" 14T splined	63				ST	Electronic speed sensor	1523
								K	28.56mm 1:10 tapered	42						
								KB	35mm 1:10 tapered	53						



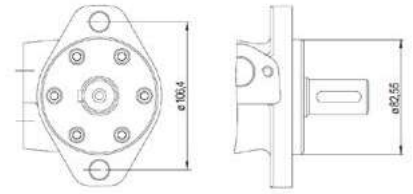
MR Standard HP Series



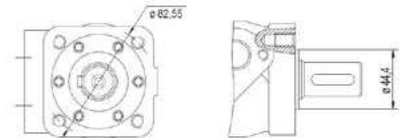
MRQ MRQ Series



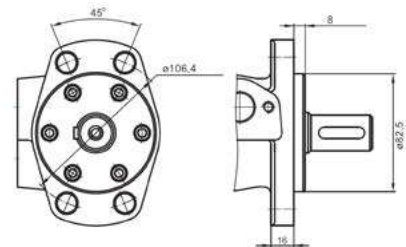
Standard Mount SAE A 2-bolt



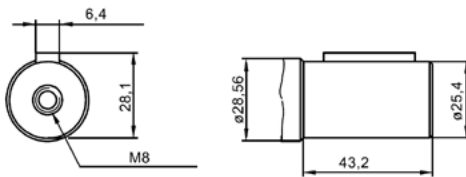
Q Q Mount M10 4-bolt



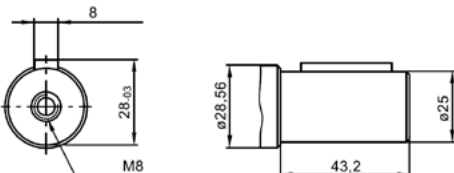
F Magneto 4-bolt Mount



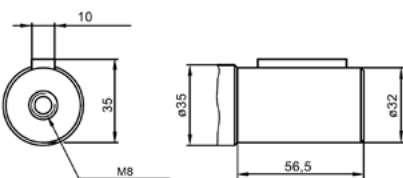
CO 1" Straight Keyed Shaft



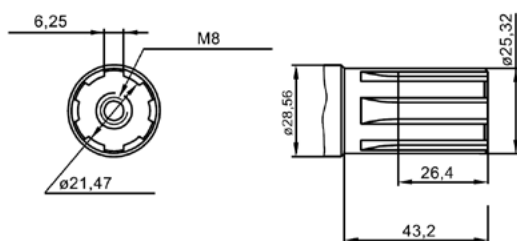
C 25mm Straight Keyed Shaft



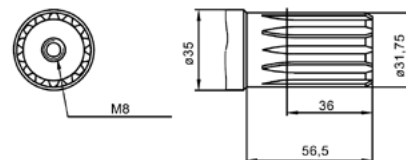
CB 32mm Straight Keyed Shaft



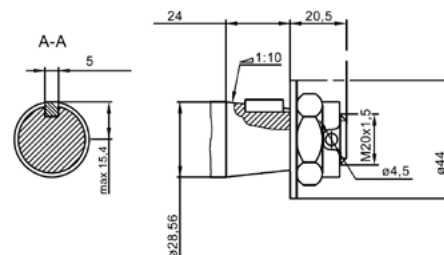
SH 1" 6B Splined Shaft



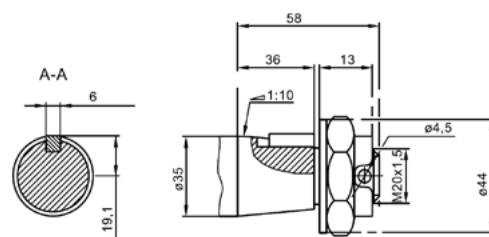
HB 1.1/4" 14T Splined Shaft



K 28.56mm 1:10 Tapered Shaft



KB 35mm 1:10 Tapered Shaft




**TECH
DATA**

MRYN Series Geroler Motor

Standard Pricing: Shaft 1" Straight Keyed, Mount SAE A 2-bolt, Ports 1/2" BSPP, Case 1/4" BSPP, Needle Bearings, 200 bar Shaft Seal

Part #	List Price \$	DISPLACEMENT	ROTOR	SPEED	FLOW	PRESSURE DROP	INLET PRESSURE	TORQUE	WEIGHT	
		(cc)	Width L1 (mm)	Max. Cont. (RPM)	Max. Cont. (L/min)	Max. Cont. (Bar)	Max. Cont. (Bar)	Max. Cont. (Nm)	(Kg)	
MRYN 50	925.00	51.5	9.0	775	40	150	200	100	7.2	NEW
MRYN 80	946.00	80.3	14.0	747	60	200	200	215	7.4	NEW
MRYN 100	957.00	99.8	17.4	600	60	200	200	275	7.6	NEW
MRYN 125	978.00	122.5	17.4	490	60	200	200	327	7.9	NEW
MRYN 160	999.00	153.6	21.8	390	60	180	200	375	8.3	NEW
MRYN 200	1030.00	195.8	27.8	306	60	150	200	400	8.6	NEW
MRYN 250	1051.00	245.0	34.8	245	60	125	200	400	9.0	NEW
MRYN 315	1072.00	306.0	43.5	195	60	100	200	400	9.5	NEW
MRYN 400	1104.00	386.0	54.8	155	60	80	200	400	10.3	NEW

 To ensure best motor life, fill with fluid and run at moderate load for 5-10 minutes

Equivalent to:

n/a



Seal Kits

Part #	List Price \$	Pressure Rating without Drain Line
MRYN-SK	116.00	200 bar ≤200 RPM

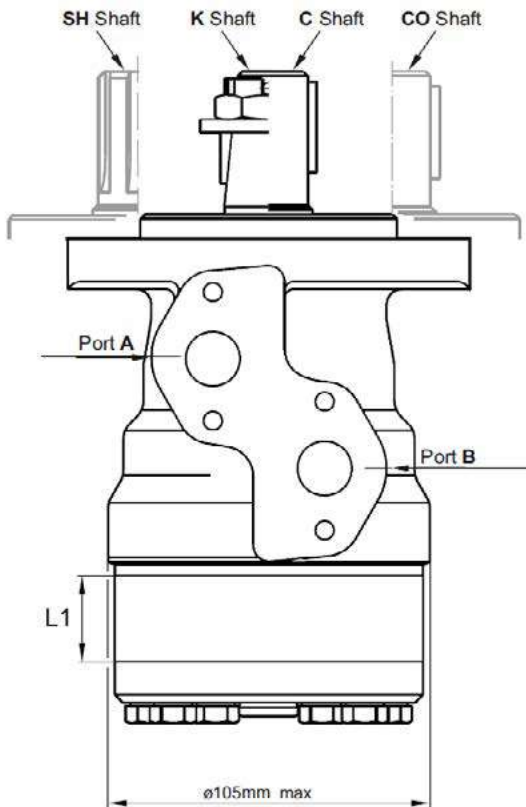
Nomenclature

MRYN	PORTS			DISPLACEMENT	SHAFTS		
	Code	Description	\$		Code	Description	\$
				50-400cc			
	-	Side ports	-		C0	1" straight keyed	-
	E	Rear ports	63		C	25mm straight keyed	-
					K	28.56mm 1:10 tapered	42
					SH	1" 6B splined	21

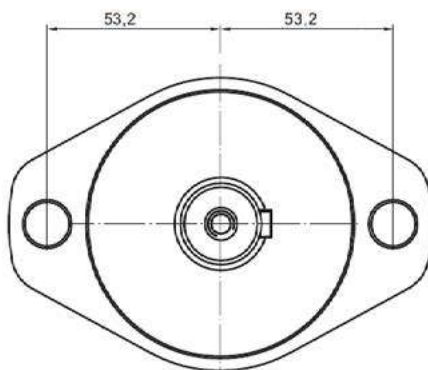


MRYN

Standard MRYN Series

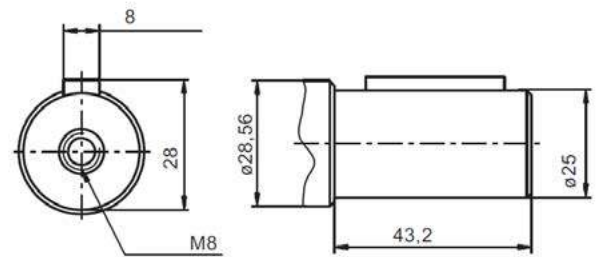


Standard Mount SAE A 2-bolt



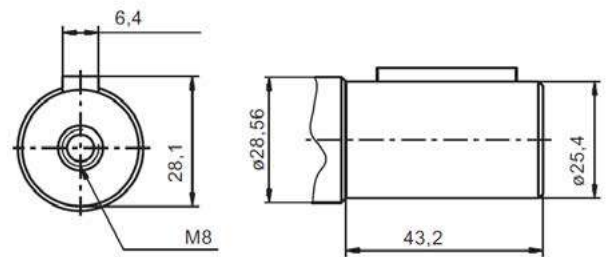
C

25mm Straight Keyed Shaft



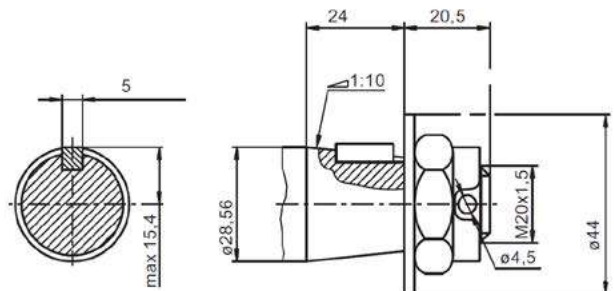
CO

1" Straight Keyed Shaft



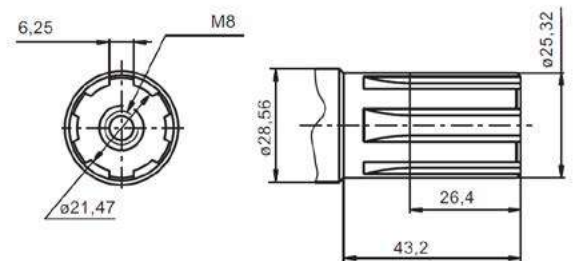
K

28.56 1:10 Tapered shaft



SH

1" 6B Splined Shaft



**TECH
DATA**

MLHR Series Geroler Motor

Standard Pricing: Shaft 1" Straight Keyed, Mount SAE A 2-bolt, Ports 7/8" UNF, Case 7/16" UNF

Part #	List Price \$	DISPLACEMENT	ROTOR	SPEED	FLOW	PRESSURE DROP	INLET PRESSURE	TORQUE	WEIGHT
		(cc)	Width L1 (mm)	Max. Cont. (RPM)	Max. Cont. (L/min)	Max. Cont. (Bar)	Max. Cont. (Bar)	Max. Cont. (Nm)	(Kg)
MLHR 50 C4U	830.00	51.5	9	775	40	140	175	101	7.2
MLHR 80 C4U	851.00	80.3	14	750	60	175	175	195	7.4
MLHR 100 C4U	861.00	99.8	17.4	600	60	175	175	240	7.6
MLHR 125 C4U	882.00	125.7	21.8	475	60	175	175	300	7.9
MLHR 160 C4U	903.00	159.6	27.8	375	60	175	175	390	8.3
MLHR 200 C4U	935.00	199.8	34.8	300	60	140	175	385	8.6
MLHR 250 C4U	956.00	250.1	43.5	240	60	110	175	390	9
MLHR 315 C4U	977.00	315.7	54.8	190	60	90	175	390	9.5
MLHR 400 C4U	1008.00	397	69.4	150	60	70	175	380	10.3

 To ensure best motor life, fill with fluid and run at moderate load for 5-10 minutes

Equivalent to:
OMR(US) Danfoss



Seal Kits

Part #	List Price \$	Pressure Rating without Drain Line
MLHR-SKD	116.00	150 bar ≤100 RPM
MLHRQ-SKD	116.00	150 bar ≤100 RPM
MLHR-SKU	116.00	200 bar ≤200 RPM
MLHRQ-SKU	116.00	200 bar ≤200 RPM
MLHRW-SKB	116.00	100 bar ≤100 RPM

Nomenclature

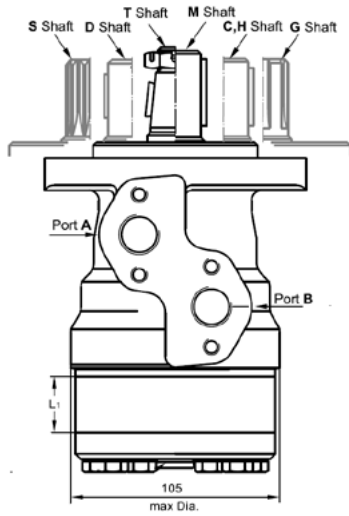
MLHR	MOUNTING			DISP.	SHAFTS			OPTIONS			PORTS			SHAFT SEALS		
	Code	Description	\$		Code	Description	\$	Code	Description	\$	Code	Description	\$	Code	Description	\$
	-	SAE A 2-bolt 82.5mm spigot	-	50-400cc	C	1" straight keyed	-	N	Needle bearings	95	4	7/8" UNF	-	D	150 bar *	-
	Q	Square 4-bolt 44.4mm spigot	53		K	1.1/4" straight keyed	42				2	1/2" BSPP	-	U	200 bar *	-
	F	Magneto 4-bolt 82.5mm spigot	42		H	1" straight cross hole 10.5mm hole	21							UK	200 bar shaft seal + check valves *	74
	W	Wheel 4-bolt 82.5mm spigot	284		R	1.1/4" 1:8 Tapered	53									

* Refer to specifications for performance data



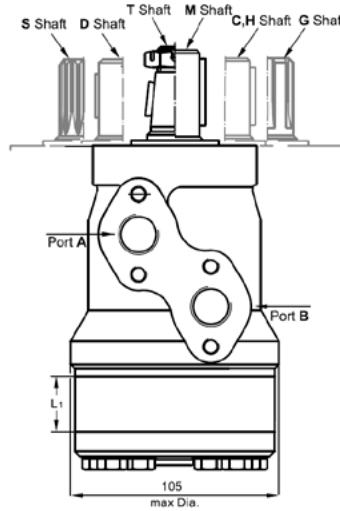
MLHR

MLHR/MLHRF Series



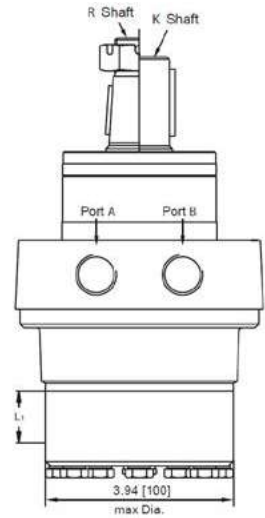
MLHRQ

MLHRQ/MLHRM Series



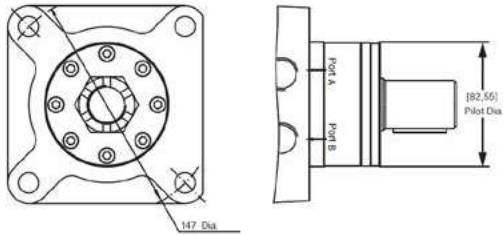
MLHRW

MLHRW Series



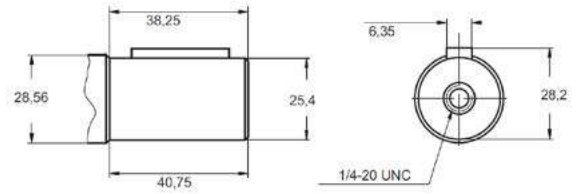
W

Wheel Mount 4-bolt



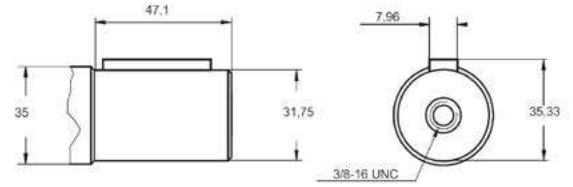
C

1" Straight Keyed Shaft



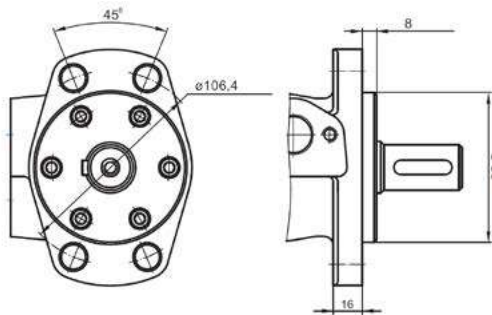
K

1.1/4" Straight Keyed Shaft



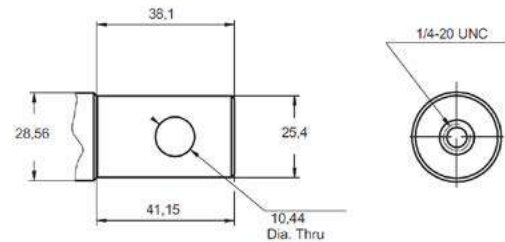
F

Magneto Mount, Oval 4-bolt



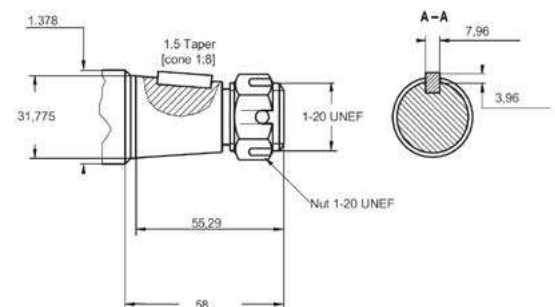
H

1" Straight 10.5mm Cross Hole



R

1.1/.4" 1:8 Tapered Shaft




**TECH
DATA**

HR Series Geroler Motor

Standard Pricing: Shaft 1" Woodruff Keyed, Mount SAE A 2-bolt, Ports 7/8" UNF, Case 7/16" UNF

Part #	List Price \$	DISPLACEMENT	ROTOR	SPEED	FLOW	PRESSURE DROP	INLET PRESSURE	TORQUE	WEIGHT
		(cc)	Width L1 (mm)	Max. Cont. (RPM)	Max. Cont. (L/min)	Max. Cont. (Bar)	Max. Cont. (Bar)	Max. Cont. (Nm)	(Kg)
HR 50 C4U	830.00	51.5	9	777	40	140	140	98	6.6
HR 80 C4U	851.00	80.3	14	747	60	140	140	160	6.7
HR 100 C4U	861.00	99.8	17.4	601	60	140	140	195	7
HR 125 C4U	882.00	122.5	17.4	490	60	140	140	240	7.1
HR 160 C4U	903.00	153.6	21.8	391	60	140	140	300	7.3
HR 200 C4U	935.00	195.8	27.8	306	60	130	140	350	7.8
HR 250 C4U	956.00	245	34.8	245	60	110	140	370	8.2
HR 315 C4U	977.00	306	43.5	196	60	100	140	420	8.9
HR 400 C4U	1008.00	386	54.8	155	60	85	140	450	9.6

 To ensure best motor life, fill with fluid and run at moderate load for 5-10 minutes

Equivalent to:

BMRS Hydnet

BS Brevini

DS Danfoss

S,T Series Eaton Char Lynn

WG White



Seal Kits

Part #	List Price \$	Pressure Rating without Drain Line
HRN-SKD	116.00	150 bar ≤100 RPM
HRQN-SKD	116.00	150 bar ≤100 RPM
HRQ-SKUE	116.00	200 bar ≤200 RPM
HR-SKUE	116.00	200 bar ≤200 RPM

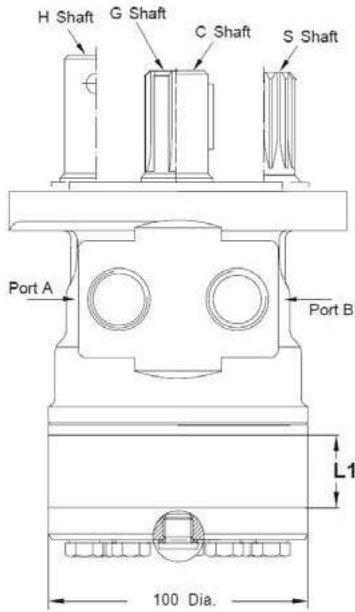
Nomenclature

HR	MOUNTING			OPTIONS			DISP.	SHAFTS			PORTS			SHAFT SEALS		
	Code	Description	\$	Code	Description	\$		Code	Description	\$	Code	Description	\$	Code	Description	\$
-	SAE A 2-bolt 82.5mm spigot	-	N	Needle bearings	95	50-400cc	C	1" straight woodruff keyed	-	4	Side ports 7/8" UNF	-	U	200 bar *	-	
Q	Square 4-bolt 44.4mm spigot	53					CW	25mm straight keyed	21	1	Manifold ports	32	V	150 bar viton *	105	
							G	1" SAE 6B splined	21							
							S	7/8" 13T splined	21							
							H	1" straight keyed 8mm cross hole	21							
							HPE	1" straight keyed 10.3mm cross hole	53							
							TE	1" 1:8 tapered	53							

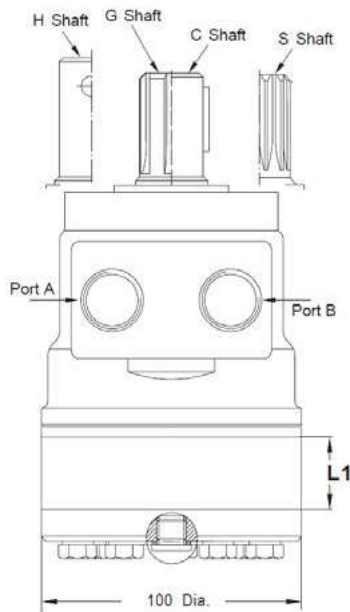
* Refer to specifications for performance data



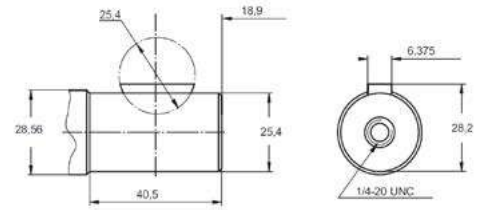
HR Standard HR Series



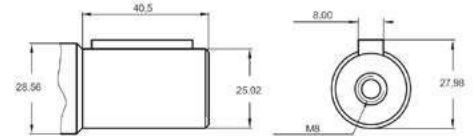
HRQ HRQ Series



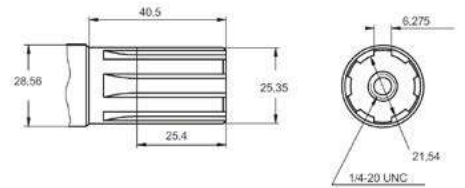
C 1" Straight Woodruff Keyed Shaft



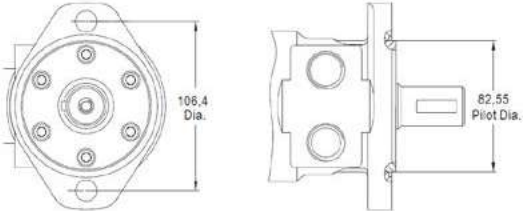
CW 25mm Straight Keyed Shaft



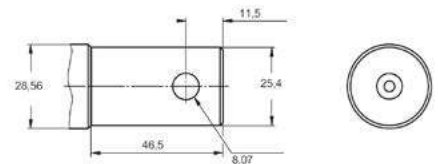
G 1" SAE 6B Splined Shaft



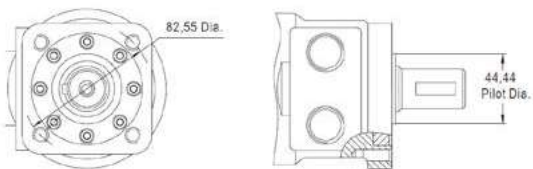
Standard Mount SAE A 2-bolt



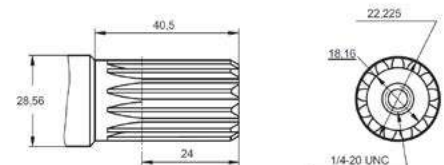
H 1" Straight Keyed 8mm Cross Hole



Q Q Mount 3/8" UNC 4-bolt



S 7/8" 13T Splined Shaft




**TECH
DATA**

RL Series Geroler Motor

Standard Pricing: Shaft 1" Straight Keyed, Mount SAE A 4-bolt, Ports 1/2" BSPP, Case 1/4" BSPP, Needle Roller Bearings

Part #	List Price \$	DISPLACEMENT	ROTOR	SPEED	FLOW	PRESSURE DROP	INLET PRESSURE	TORQUE	WEIGHT
		(cc)	Width L1 (mm)	Max. Cont. (RPM)	Max. Cont. (L/min)	Max. Cont. (Bar)	Max. Cont. (Bar)	Max. Cont. (Nm)	(Kg)
RL 50 COU	1008.00	51.5	9	775	40	140	175	100	8.5
RL 80 COU	1040.00	80.3	14	750	60	175	175	195	8.6
RL 100 COU	1050.00	99.8	17.4	600	60	175	175	240	8.9
RL 125 COU	1082.00	125.7	21.8	475	60	175	175	300	9
RL 160 COU	1103.00	159.6	27.8	375	60	175	175	380	9.2
RL 200 COU	1134.00	199.8	34.8	300	60	175	175	450	9.6
RL 250 COU	1155.00	250.1	43.5	240	60	175	175	540	10.1
RL 315 COU	1187.00	315.7	54.8	190	60	135	175	550	10.8
RL 400 COU	1218.00	397	69.4	150	60	110	175	610	11.5

 To ensure best motor life, fill with fluid and run at moderate load for 5-10 minutes

Equivalent to:
TE Parker
MB Ross/TRW
RS(200) White



Seal Kits

Part #	List Price \$	Pressure Rating without Drain Line
RL-SKU	116.00	100 bar ≤100 RPM

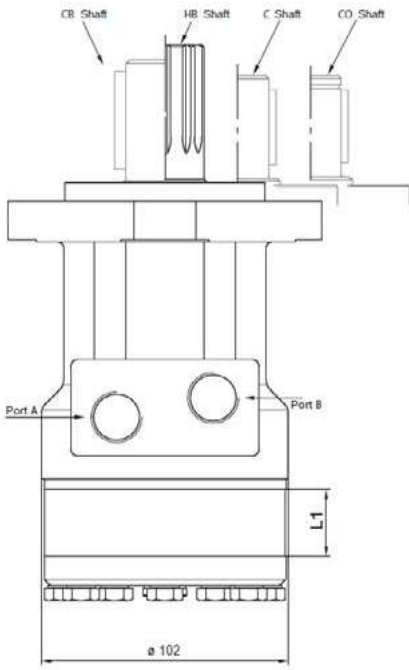
Nomenclature

RL	MOUNTING			DISP.	SHAFTS			PORTS			SHAFT SEALS		
	Code	Description	\$		Code	Description	\$	Code	Description	\$	Code	Description	\$
	A	SAE A 2-bolt 82.5mm spigot	21	50-400cc	CO	1" straight keyed	-	-	1/2" BSPP	-	U	200 bar *	-
	Q	Square 4-bolt 44.4mm spigot	32		C	25mm straight keyed	-	4	7/8" UNF	-	V	100 bar viton *	105
	F	Magneto 4-bolt 82.5mm spigot	42		CB	32mm straight keyed	53						
	-	SAE A 4-bolt 82.5mm spigot	-		SH	1" 6B splined	21						
					HB	1.1/4" 14T splined	84						
					KB	35mm 1:10 tapered	63						

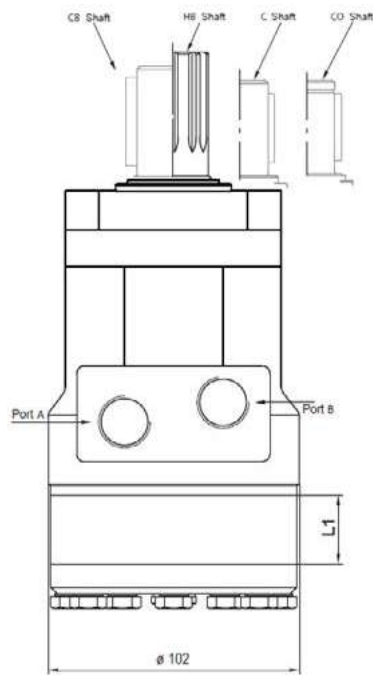
* Refer to specifications for performance data



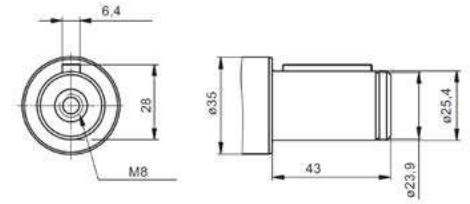
RL Standard RL Series



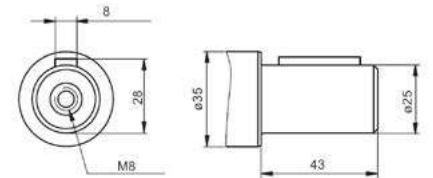
RLQ RLQ Series



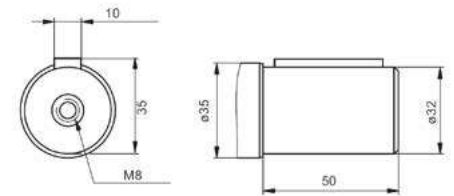
CO 1" Straight Keyed Shaft



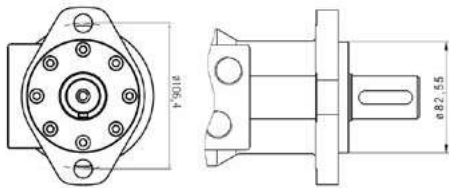
C 25mm Straight Keyed Shaft



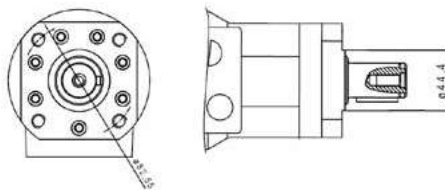
CB 32mm Straight Keyed Shaft



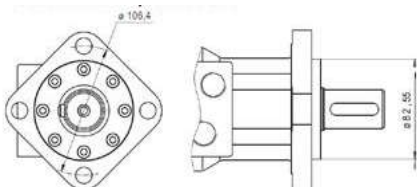
A A Mount SAE A 2-bolt



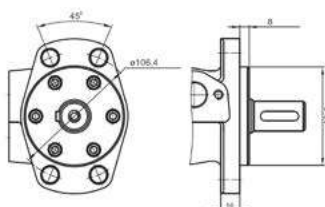
Q Q Mount M10 4-bolt



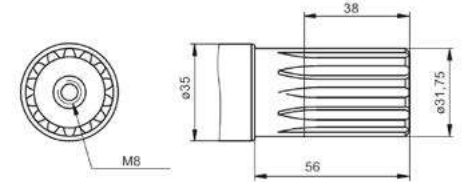
Standard Mount SAE A 4-bolt



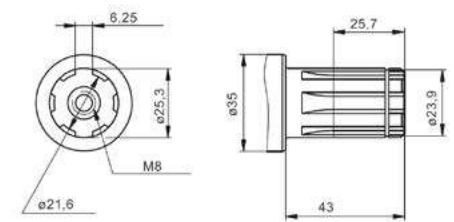
F Magneto Mount 4-bolt



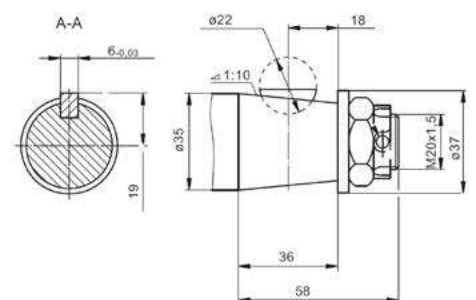
HB 1.1/4" 14T Splined Shaft



SH 1" 6B Splined Shaft



KB 35mm 1:10 Tapered Shaft




**TECH
DATA**

MH Series Geroler Motor

Standard Pricing: Shaft 32mm Straight Keyed, Mount Magneto 4-bolt, Ports 1/2" BSPP, Case 1/4" BSPP

Part #	List Price \$	DISPLACEMENT	ROTOR	SPEED	FLOW	PRESSURE DROP	INLET PRESSURE	TORQUE	WEIGHT
		(cc)	Width L1 (mm)	Max. Cont. (RPM)	Max. Cont. (L/min)	Max. Cont. (Bar)	Max. Cont. (Bar)	Max. Cont. (Nm)	(Kg)
MH 200 CU	1113.00	201.3	27.8	370	75	175	200	510	10.5
MH 250 CU	1145.00	252	34.8	295	75	175	200	610	11
MH 315 CU	1176.00	314.9	43.5	235	75	175	200	740	11.5
MH 400 CU	1208.00	396.8	54.8	185	75	155	200	840	12.3
MH 500 CU	1334.00	502.4	69.4	150	75	125	200	820	13

 To ensure best motor life, fill with fluid and run at moderate load for 5-10 minutes

Equivalent to:
OMH Danfoss



Seal Kits

Part #	List Price \$	Pressure Rating without Drain Line
MH-SKD	116.00	100 bar ≤100 RPM
MH-SKU	116.00	150 bar ≤200 RPM

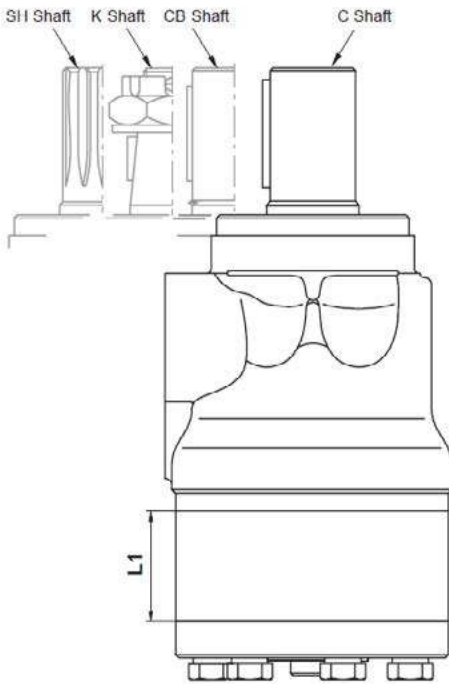
Nomenclature

MH	MOUNTING			DISP.	SHAFTS			PORTS			SHAFT SEALS			
	Code	Description	\$		Code	Description	\$	Code	Description	\$	Code	Description	\$	
-	Magneto 4-bolt	82.5mm spigot	-	200-500cc	C	32mm straight keyed	-	-	Side ports	1/2" BSPP	-	U	150 bar *	-
					CB	35mm straight keyed	42	*	Side ports	7/8" UNF	-			
					SH	1.1/4" 14T splined	32		* Contact office					
					K	35mm 1:10 tapered	42							

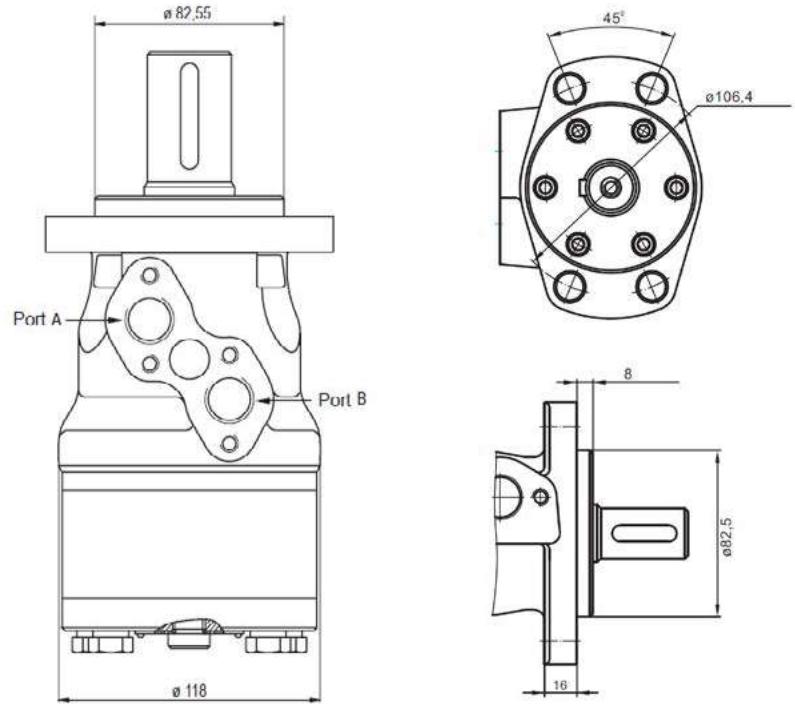
* Refer to specifications for performance data



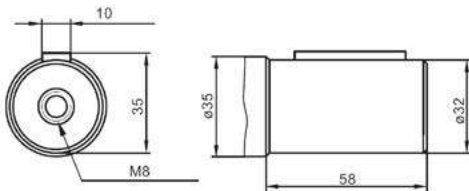
MH Standard MH Series



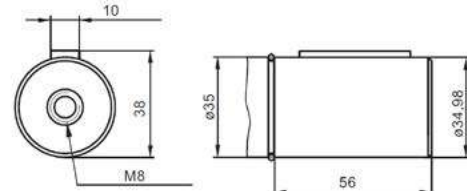
Magneto 4-bolt Mount



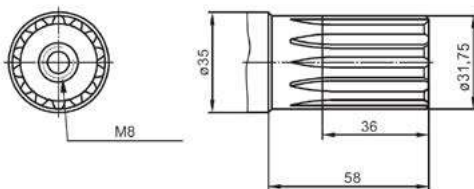
C 32mm Straight Keyed Shaft



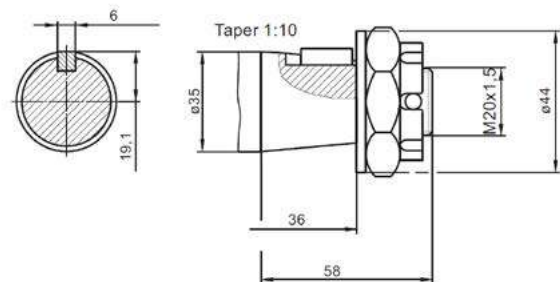
CB 35mm Straight Keyed Shaft



SH 1.1/4" 14T Splined Shaft



K 35mm 1:10 Tapered Shaft



**TECH
DATA**

MLHH Series Geroler Motor

Standard Pricing: Shaft 1.1/4" Straight Keyed, Mount Magneto 4-bolt, Ports 7/8"-14 UNF, Case 7/16" BSPP

Part #	List Price \$	DISPLACEMENT	ROTOR	SPEED	FLOW	PRESSURE DROP	INLET PRESSURE	TORQUE	WEIGHT
		(cc)	Width L1 (mm)	Max. Cont. (RPM)	Max. Cont. (L/min)	Max. Cont. (Bar)	Max. Cont. (Bar)	Max. Cont. (Nm)	(Kg)
MLHH 200 K4U	1113.00	201.3	27.8	370	75	175	200	510	10.5
MLHH 250 K4U	1145.00	252.0	34.8	295	75	175	200	610	11.0
MLHH 315 K4U	1176.00	314.9	43.5	235	75	175	200	740	11.5
MLHH 400 K4U	1208.00	396.8	54.8	185	75	155	200	840	12.3
MLHH 500 K4U	1334.00	502.4	69.4	150	75	120	200	820	13.0

 To ensure best motor life, fill with fluid and run at moderate load for 5-10 minutes

Equivalent to:

N/A



Seal Kits

Part #	List Price \$	Pressure Rating without Drain Line
MH-SKD	116.00	100 bar ≤100 RPM
MH-SKU	116.00	150 bar ≤200 RPM

Nomenclature

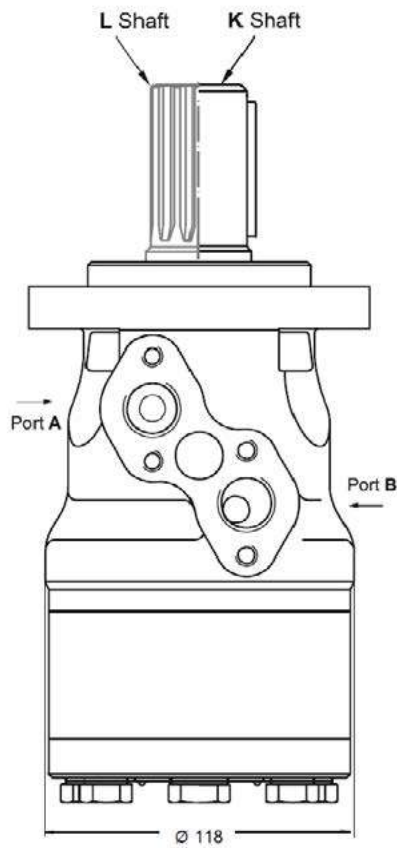
MLHH	MOUNTING			DISP.	SHAFTS			PORTS			SHAFT SEALS		
	Code	Description	\$		Code	Description	\$	Code	Description	\$	Code	Description	\$
-	Magneto 4-bolt	-	200-500cc	K	1.1/4" straight keyed	-	4	7/8-14 UNF	-	U	150 bar *	-	
				L	1.1/4" 14T splined	32							

* Refer to specifications for performance data

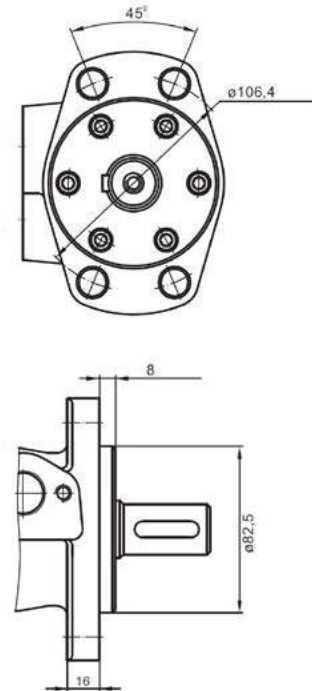
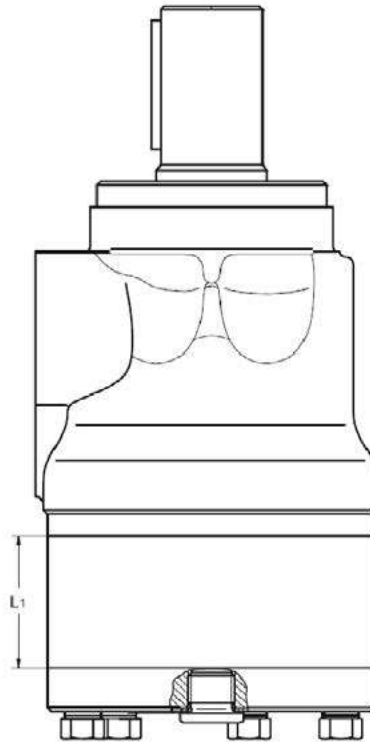


MLHH

Standard ML Series

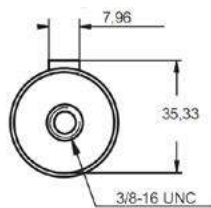
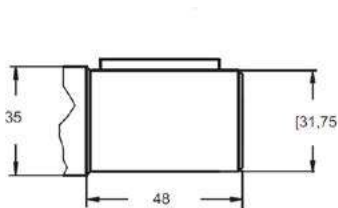


Magneto 4-bolt Mount



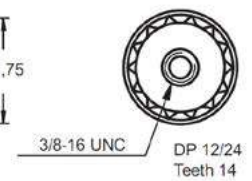
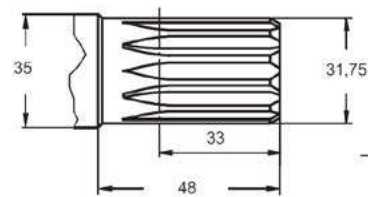
K

1.1/4" Straight Keyed Shaft



L

1.1/4" 14T Splined Shaft



**TECH
DATA**

RW Series Geroler Motor

Standard Pricing: Shaft 35mm 1:10 Taper, Mount Wheel 4-bolt, Ports 1/2" BSPP, Case 1/4" BSPP

Part #	List Price \$	DISPLACEMENT	ROTOR	SPEED	FLOW	PRESSURE DROP	INLET PRESSURE	TORQUE	WEIGHT
		(cc)	Width L1 (mm)	Max. Cont. (RPM)	Max. Cont. (L/min)	Max. Cont. (Bar)	Max. Cont. (Bar)	Max. Cont. (Nm)	(Kg)
RW 50 KB	1134.00	51.5	9	775	40	140	175	100	9.6
RW 80 KB	1155.00	80.3	14	750	60	175	175	200	9.7
RW 100 KB	1176.00	99.8	17.4	600	60	175	175	240	9.8
RW 125 KB	1197.00	125.7	21.8	475	60	175	175	300	10
RW 160 KB	1218.00	159.6	27.8	375	60	175	175	390	10.3
RW 200 KB	1260.00	199.8	34.8	300	60	175	175	450	10.8
RW 250 KB	1281.00	250.1	43.5	300	75	175	175	540	11.3
RW 315 KB	1302.00	315.7	54.8	240	75	135	175	550	11.8
RW 400 KB	1344.00	397	69.4	190	75	110	175	610	12.5

 To ensure best motor life, fill with fluid and run at moderate load for 5-10 minutes

Equivalent to:
MGRW *Bosch Rexroth*
OMEW *Danfoss*



Seal Kits

Part #	List Price \$	Pressure Rating without Drain Line
RW-SKU	116.00	200 bar ≤150 RPM

Nomenclature

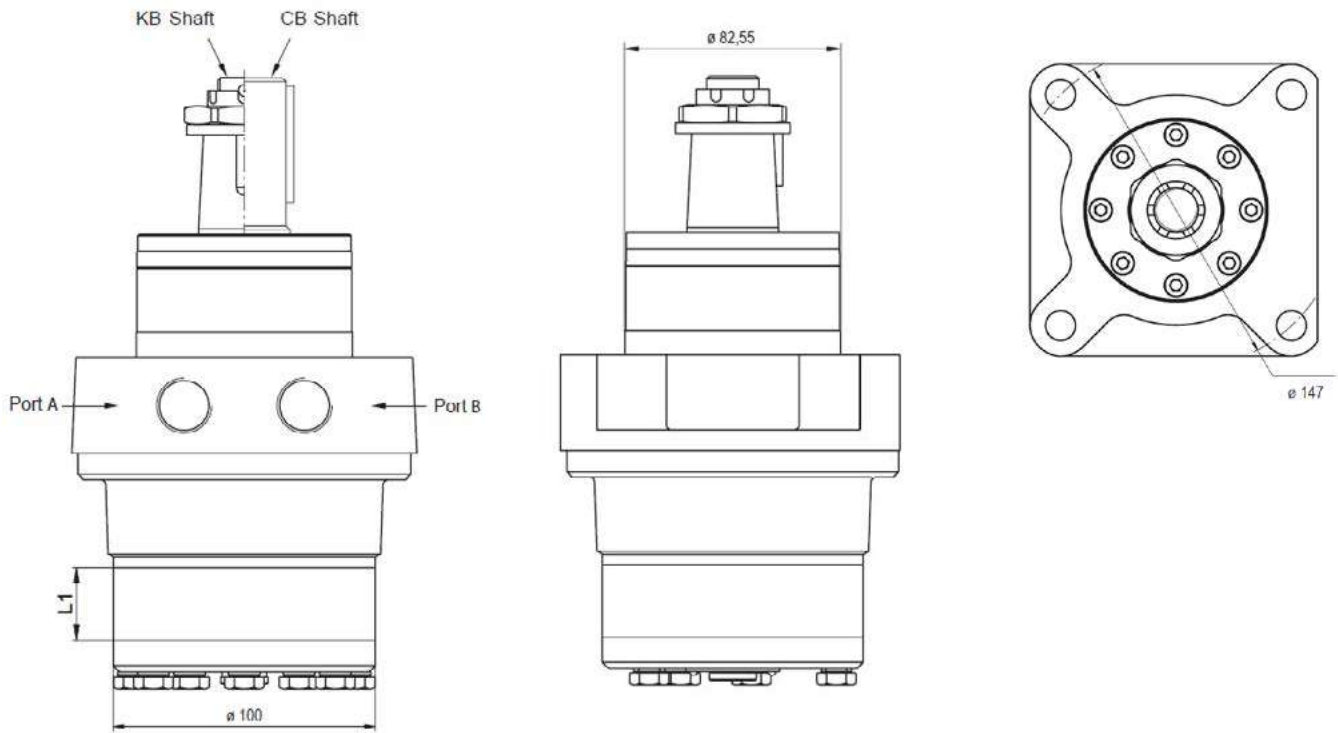
RW	DISPLACEMENT	SHAFTS			PORTS			SHAFT SEALS		
	50-400cc	Code	Description	\$	Code	Description	\$	Code	Description	\$
		KB	35mm 1:10 tapered	-	-	Side ports 1/2" BSPP	-	UK	200 bar shaft seal check valves *	74
		CB	32mm straight keyed	-	-	For UNF ports, see MLHRW model	-			
		OB	1.1/4" 1:8 taper	-						

* Refer to specifications for performance data



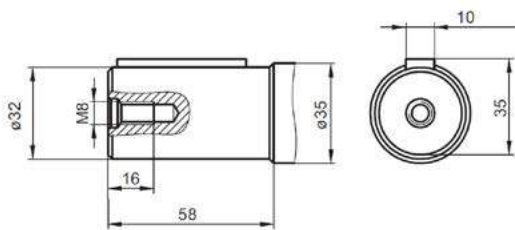
RW

Standard RW Series



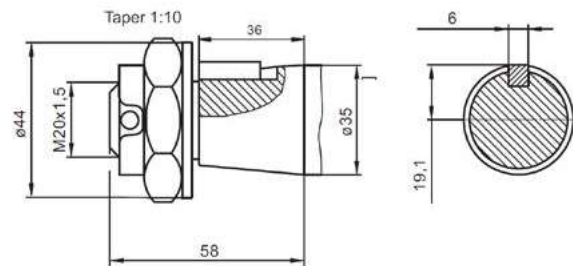
CB

32mm Straight Keyed Shaft



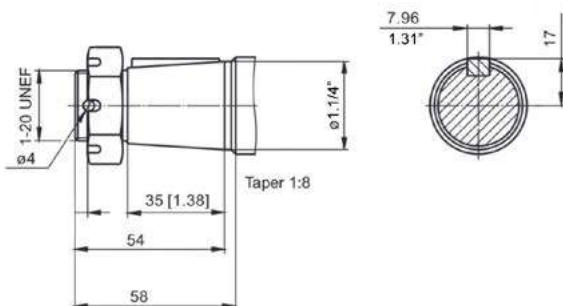
KB

35mm 1:10 Tapered Shaft



OB

1.1/4" 1:8 Tapered Shaft



**TECH
DATA**

HW Series Geroler Motor

Standard Pricing: Shaft 1.1/4" Straight Keyed, Mount Wheel 4-bolt, Ports 7/8" UNF, Case 7/16" UNF

Part #	List Price \$	DISPLACEMENT	ROTOR	SPEED	FLOW	PRESSURE DROP	INLET PRESSURE	TORQUE	WEIGHT	
		(cc)	Width L1 (mm)	Max. Cont. (RPM)	Max. Cont. (L/min)	Max. Cont. (Bar)	Max. Cont. (Bar)	Max. Cont. (Nm)	(Kg)	
HWS 80 K4	1400.00	79.7	134	565	45	175	200	188	14.1	NEW
HWS 100 K4	1420.00	101.4	137	445	45	175	200	240	14.2	NEW
HWS 125 K4	1430.00	126	17.4	357	45	205	210	350	14.5	
HWS 160 K4	1440.00	157.8	21.8	380	60	205	210	440	15	
HWS 200 K4	1450.00	201.3	27.8	373	75	205	210	550	15.5	
HWS 235 K4	1480.00	235.3	32.5	319	75	205	210	645	16	
HWS 250 K4	1490.00	252	34.8	298	75	205	210	690	16	
HWS 300 K4	1530.00	300	41.4	250	75	205	210	810	16.5	
HWS 315 K4	1540.00	314.9	43.5	238	75	205	210	850	16.5	
HWS 350 K4	1560.00	347.8	48	216	75	205	210	940	17	
HWS 370 K4	1570.00	369.2	51	203	75	200	210	960	17	
HWS 400 K4	1590.00	396.8	54.8	189	75	185	210	960	17.5	
HWS 470 K4	1690.00	470.6	65	159	75	150	210	920	18.3	
HWS 500 K4	1740.00	502.4	69.4	149	75	140	210	910	18.6	
HWS 535 K4	1770.00	535	74.1	140	75	130	210	900	19	
HWS 550 K4	1800.00	550	76	136	75	125	210	890	19.1	
HWS 600 K4	2020.00	598.8	82.6	125	75	115	210	910	20.1	
HWS 750 K4	2070.00	753.8	227.5	99	75	95	210	920	21.9	NEW

 To ensure best motor life, fill with fluid and run at moderate load for 5-10 minutes

Equivalent to:
TG Parker
RE(500) White



Seal Kits

Part #	List Price \$	Pressure Rating without Drain Line
HW-SK	180.00	150 bar ≤70 RPM

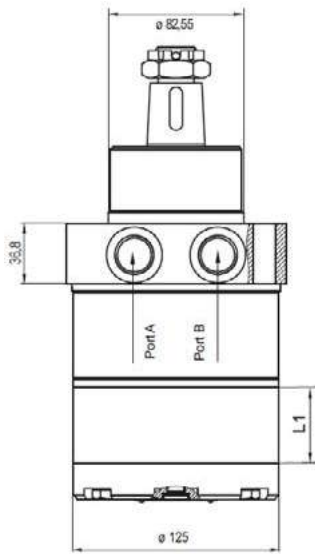
Nomenclature

HW	MOUNTING			DISP.	SHAFTS			PORTS			SHAFT SEALS		
	Code	Description	\$		Code	Description	\$	Code	Description	\$	Code	Description	\$
	S	Wheel mount 82.55mm spigot	-	80-750cc	CO	25mm straight keyed	-	4	Side ports 7/8" UNF	-	V	150 bar viton *	100
	F	Magneto 6-bolt 82.55mm spigot	20		CO1	1" straight keyed	-						
					SH	1" 6B splined	20						
					R	1.1/4" 1:8 tapered	50						
					RG	1.3/8" 1:8 tapered	70						
					T	1.1/2" 1:8 tapered	20						
					L	1.1/4" 14T splined	30						
					K	1.1/4" straight keyed	-						
					KB	35mm 1:10 tapered	50						
					M	32mm straight keyed	-						
					H	1.3/8" straight keyed	40						

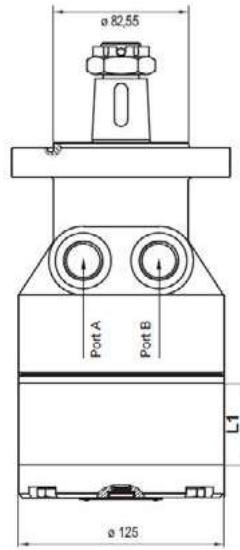
* Refer to specifications for performance data



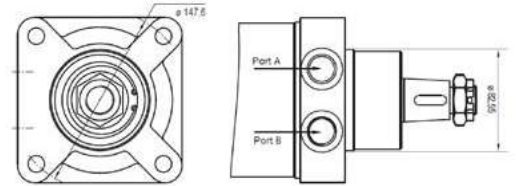
HWS Dingo Design Wheel Mount



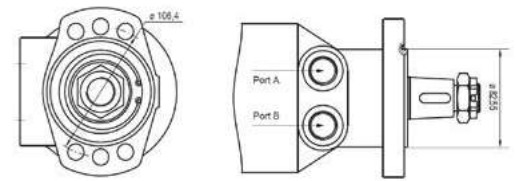
HWF Magneto Mount



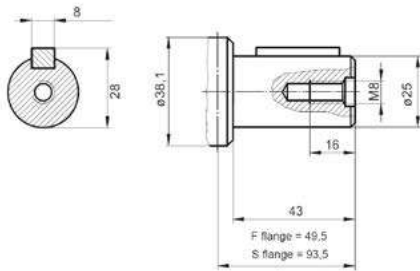
S Wheel Mount 4-bolt



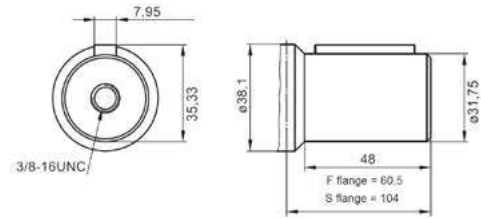
F Magneto Mount, Oval 6-bolt



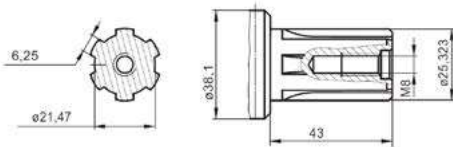
C0 25mm Straight Keyed Shaft



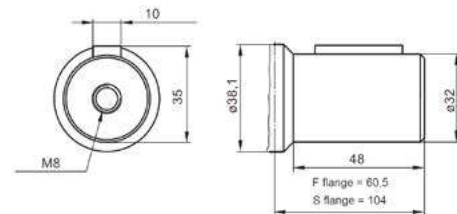
K 1.1/4" Straight Keyed Shaft



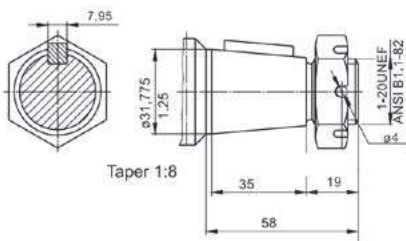
SH 1" 6B Splined Shaft



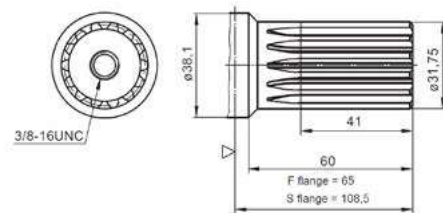
M 32mm Straight Keyed Shaft



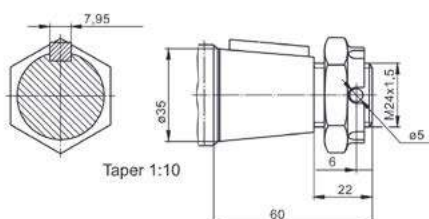
R 1.1/4" 1:8 Tapered Shaft



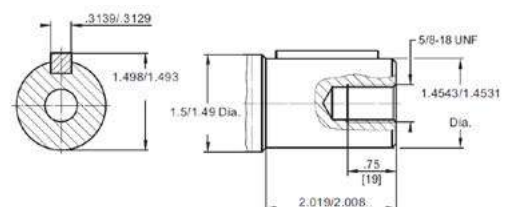
L 1.1/4" 14T Splined Shaft



KB 35mm 1:10 Tapered Shaft



H 1.3/8" Straight Keyed Shaft



**TECH
DATA**

MS Series Disc Valve Motor

Standard Pricing: Shaft 1.1/4" Straight Keyed, Mount SAE A 4-bolt, Ports 1/2" BSPP, Case 1/4" BSPP

Part #	List Price \$	DISPLACEMENT	ROTOR	SPEED	FLOW	PRESSURE DROP	INLET PRESSURE	TORQUE	WEIGHT
		(cc)	Width L1 (mm)	Max. Cont. (RPM)	Max. Cont. (L/min)	Max. Cont. (Bar)	Max. Cont. (Bar)	Max. Cont. (Nm)	(Kg)
MS 80 COU	1292.00	80.5	14	810	65	210	230	240	10.4
MS 100 COU	1302.00	100	17.4	750	75	210	230	305	10.6
MS 125 COU	1334.00	125.7	21.8	600	75	210	230	375	10.9
MS 160 COU	1355.00	159.7	27.8	470	75	210	230	490	11.3
MSY 200 COU	1386.00	200	34.8	375	75	210	230	610	11.7
MSY 250 COU	1407.00	250	43.5	300	75	200	230	720	12.2
MSY 315 COU	1481.00	314.9	54.8	240	75	200	230	825	12.9
MSY 400 COU	1554.00	397	69.4	190	75	160	230	865	13.8
MSY 475 COU	2037.00	474.6	82.6	160	75	130	230	850	14.9
MS 525 COU	2069.00	522.7	74.5	145	75	115	230	850	15.1
MS 565 COU	2111.00	564.9	80.2	130	75	105	230	850	15.5

 To ensure best motor life, fill with fluid and run at moderate load for 5-10 minutes

Equivalent to:

BMSY(EU) Hydnet
MGS/GMS Bosch Rexroth
HR Brevini
OMS Danfoss
WS White



Seal Kits

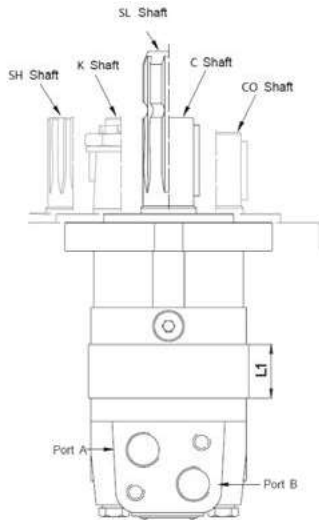
Part #	List Price \$	Pressure Rating without Drain Line
MS-SKD	147.00	100 bar ≤100 RPM
MS-SKU	147.00	150 bar ≤200 RPM
MSY-SKU	147.00	150 bar ≤200 RPM
MSS-SK	63.00	n/a
MSU-SK	63.00	n/a

Nomenclature

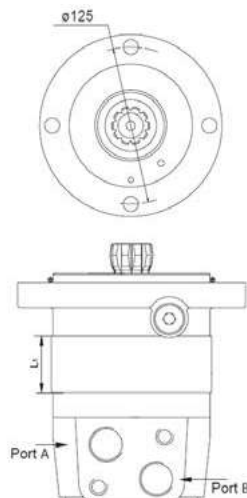
MS/MSY	MOUNTING			DISP.	SHAFTS			SHAFT SEAL			SPEED SENSORS		
	Code	Description	\$		Code	Description	\$	Code	Description	\$	Code	Description	\$
MSY used for 200-475cc	-	SAE A 4-bolt 82.5mm spigot	-	80-565cc	CO	1.1/4" straight keyed	-	U	150 bar *	-	RSSH	Speed sensor universal plug type	441
	A	SAE A 2-bolt 82.5mm spigot	21		C	32mm straight keyed	-				RSSH5	Speed sensor universal 5m lead	452
	Q	Square 4-bolt 82.5mm spigot	32		CK	35mm straight keyed	53				ST	Electronic speed sensor	1575
	F	Magneto 4-bolt 82.5mm spigot	74		SH	1.1/4" 14T splined	53						
	W	Wheel mount 125mm spigot	74		SL	1.3/8" 6T splined PTO	63						
	S	Short motor 100mm spigot	Minus 210		K	35mm 1:10 tapered	42						
					T	1.1/4" 1:8 tapered	53						



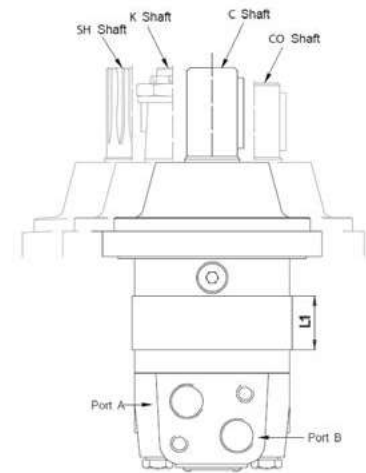
MS Standard MS Series



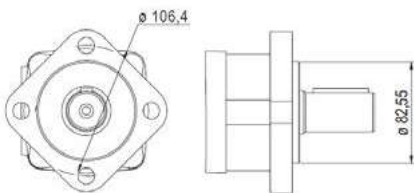
S Short Motor MSS Series



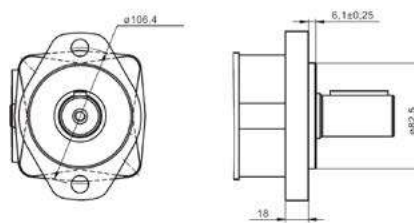
W Wheel Mount MSW Series



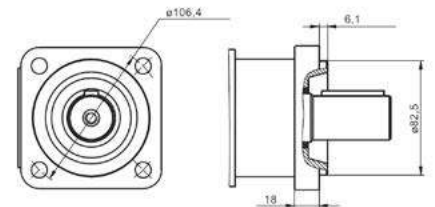
- Standard Mount SAE 4-bolt



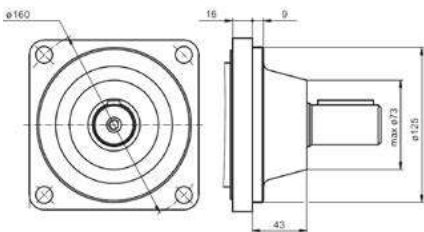
A SAE 2-bolt Mount



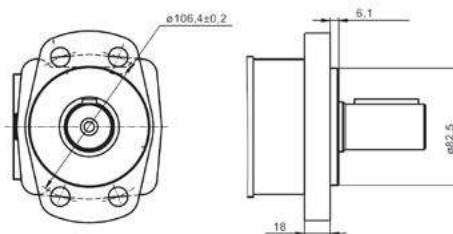
Q Square 4-bolt Mount



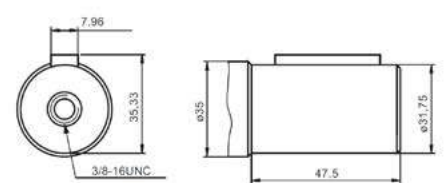
W Wheel Mount 4-bolt



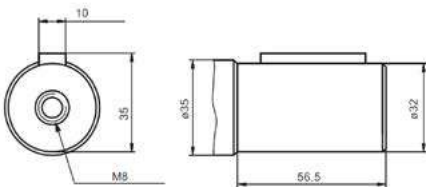
F Magneto 4-bolt Mount



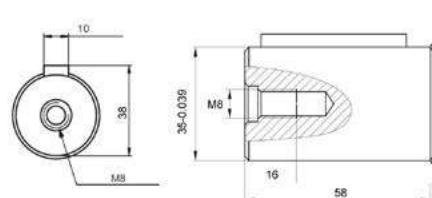
CO 1.1/4" Straight Keyed Shaft



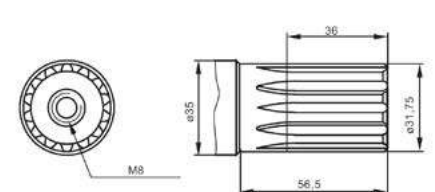
C 32mm Straight Keyed Shaft



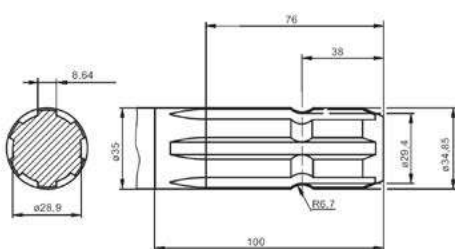
CK 35mm Straight Keyed Shaft



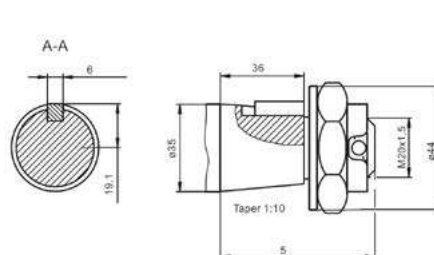
SH 1.1/4" 14T Splined Shaft



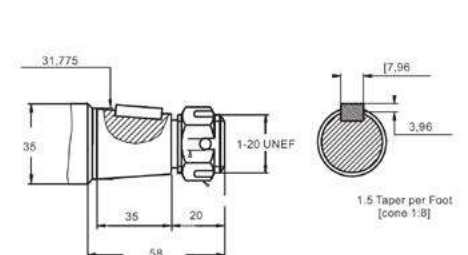
SL 1.3/8" 6T Splined PTO



K 35mm 1:10 Tapered Shaft



T 1.1/4" 1:8 Tapered Shaft



**TECH
DATA**

MLHS Series Disc Valve Motor

Standard Pricing: Shaft 1.1/4" Straight Keyed, Mount SAE A 4-bolt, Ports 7/8" UNF, Case 7/16" UNF

Part #	List Price \$	DISPLACEMENT	ROTOR	SPEED	FLOW	PRESSURE DROP	INLET PRESSURE	TORQUE	WEIGHT
		(cc)	Width L1 (mm)	Max. Cont. (RPM)	Max. Cont. (L/min)	Max. Cont. (Bar)	Max. Cont. (Bar)	Max. Cont. (Nm)	(Kg)
MLHS 80 C4U	1292.00	80.5	14	810	65	210	230	240	10.4
MLHS 100 C4U	1302.00	100	17.4	750	75	210	230	305	10.6
MLHS 125 C4U	1334.00	125.7	21.8	600	75	210	230	375	10.9
MLHS 160 C4U	1355.00	159.7	27.8	470	75	210	230	490	11.3
MLHSY 200 C4U	1386.00	200	34.8	375	75	210	230	610	11.7
MLHSY 250 C4U	1407.00	250	43.5	300	75	200	230	720	12.2
MLHSY 315 C4U	1481.00	314.9	54.8	240	75	200	230	825	12.9
MLHSY 400 C4U	1554.00	397	69.4	190	75	160	230	865	13.8
MLHSY 475 C4U	2037.00	474.6	82.6	160	75	130	230	850	14.9
MLHS 525 C4U	2069.00	522.7	74.5	145	75	115	230	850	15.1
MLHS 565 C4U	2111.00	564.9	80.2	130	75	105	230	850	15.5

 To ensure best motor life, fill with fluid and run at moderate load for 5-10 minutes

Equivalent to:

BMSY(US) Hydnert
HRS Brevini
OMS(US) Danfoss
2000 Eaton Char Lynn
TG Parker
ME Ross/TRW
RE(500) White



Seal Kits

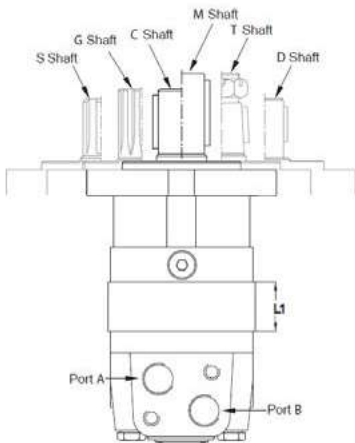
Part #	List Price \$	Pressure Rating without Drain Line
MLHS-SKU	147.00	150 bar ≤200 RPM
MLHSY-SKU	147.00	150 bar ≤200 RPM

Nomenclature

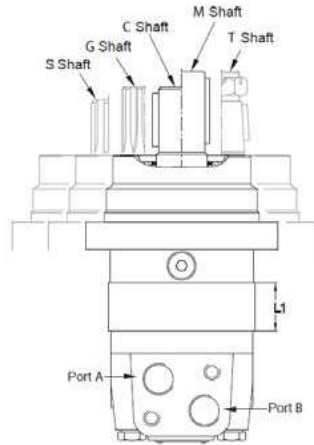
MLHS/Y	MOUNTING			DISP.	SHAFTS			PORTS			SHAFT SEALS			SPEED SENSORS			
	Code	Description	\$		Code	Description	\$	Code	Description	\$	Code	Description	\$	Code	Description	\$	
MLHSY used for 200-475cc	-	SAE A 4-bolt 82.5mm spigot	-	80-565cc	C	1.1/4" straight keyed	-	4	Side ports 7/8" UNF	-	U	150 bar *	-	RS SH	Speed sensor universal plug type	441	
	A	SAE A 2-bolt 82.5mm spigot	21		D	1" straight keyed	-	2	Side ports 1/2" BSPP	-	* Refer to specifications for performance data			RS SHL5	Speed sensor universal 5m lead	452	
	F	Magneto 4-bolt 82.5mm spigot	74		CA	25mm straight keyed	-										
	B	SAE B 2-bolt 101.6mm spigot	63		M	32mm straight keyed	-										
	E	Wheel mount 107.95mm spigot	74		SR	7/8" 13T splined	42										
					S	1" 6B splined	32										
					G	1.1/4" 14T splined	53										
					T	1.1/4" 1:8 tapered	53										
					P	1.3/8" 6T PTO	53										



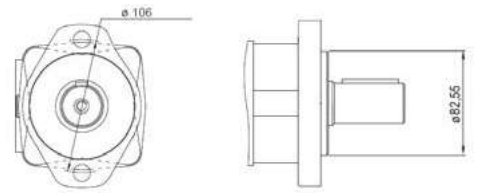
MLHS Standard MLHS Series



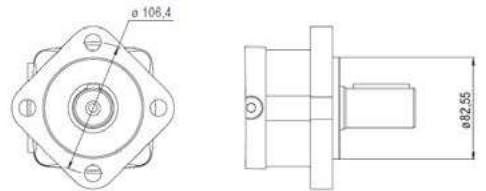
MLHSE Wheel Mount MLHSE Series



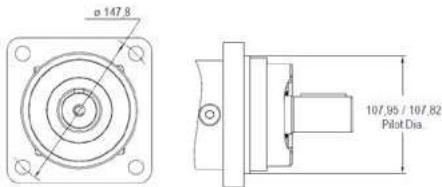
A A Mount SAE A 2-bolt



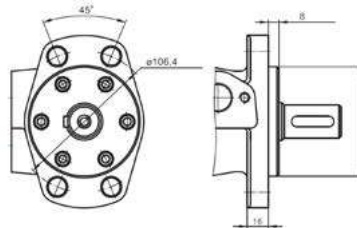
- Standard Mount SAE A 4-bolt



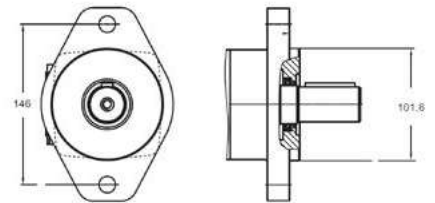
E Wheel Mount 4-bolt



F Magneto 4-bolt Mount



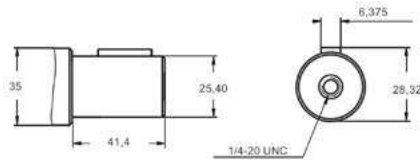
B SAE B 2-bolt Mount



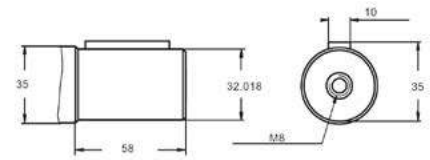
C 1.1/4" Straight Keyed Shaft



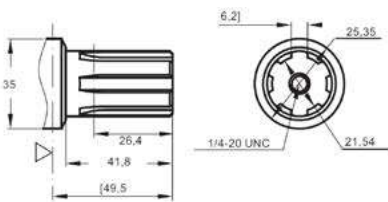
D 1" Straight Keyed Shaft



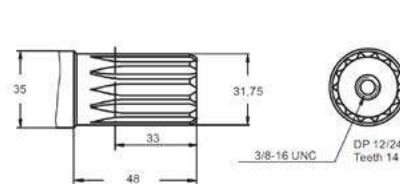
M 32mm Straight Keyed Shaft



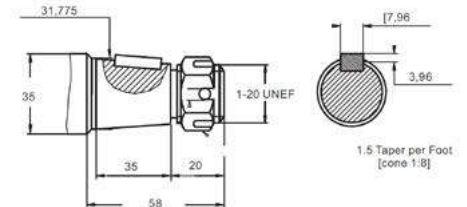
S 1" 6B Splined Shaft



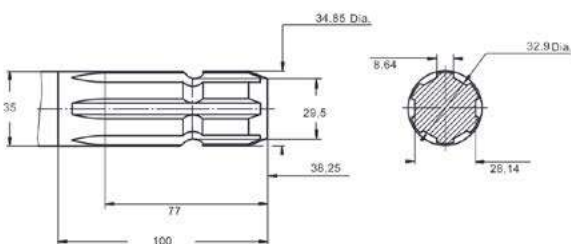
G 1.1/4" 14T Splined Shaft



T 1.1/4" 1:8 Tapered Shaft



P 1.3/8" 6T PTO Shaft



**TECH
DATA**

MYZ Series Disc Valve Motor

Standard Pricing: Shaft 1.1/4" Straight Keyed, Mount SAE B 4-bolt, Ports 1.1/16" UNF, Case 7/16" UNF

Part #	List Price \$	DISPLACEMENT	ROTOR	SPEED	FLOW	PRESSURE DROP	INLET PRESSURE	TORQUE	WEIGHT
		(cc)	Width L1 (mm)	Max. Cont. (RPM)	Max. Cont. (L/min)	Max. Cont. (Bar)	Max. Cont. (Bar)	Max. Cont. (Nm)	(Kg)
MYZ4B 160 DR4U	2216.00	157.9	21.8	570	90	205	210	425	15
MYZ4B 200 DR4U	2268.00	201.3	27.8	445	90	205	210	550	16
MYZ4B 250 DR4U	2331.00	252.2	34.8	355	90	205	210	700	17
MYZ4B 315 DR4U	2384.00	314.9	43.5	285	90	205	210	850	18
MYZ4B 400 DR4U	2478.00	396.8	54.8	225	90	185	210	970	19
MYZ4B 470 DR4U	2615.00	470.5	65	190	90	140	210	950	20
MYZ4B 550 DR4U	2804.00	550	76	160	90	125	210	910	22

 To ensure best motor life, fill with fluid and run at moderate load for 5-10 minutes

Equivalent to:
4000 Eaton Char Lynn
MJ Ross/TRW



Seal Kits

Part #	List Price \$	Pressure Rating without Drain Line
MYZ-SKU	252.00	100 bar ≤300 RPM

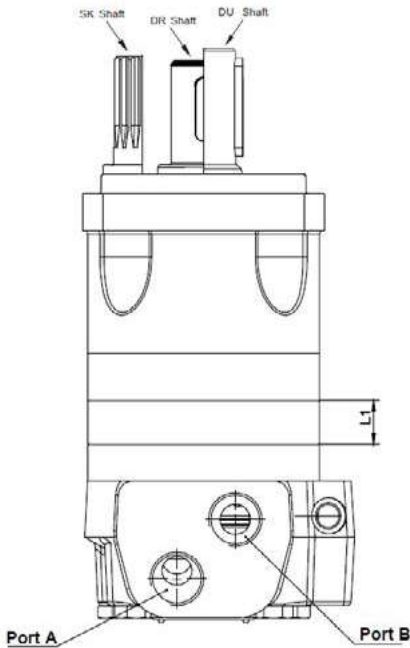
Nomenclature

MYZ	MOUNTING			DISP.	SHAFTS			PORTS			SHAFT SEALS		
	Code	Description	\$		Code	Description	\$	Code	Description	\$	Code	Description	\$
	4A	SAE A 4-bolt 82.5mm spigot	-	160-550cc	CS	32mm straight keyed	-	4	1.1/16" UNF	-	U	100 bar *	-
	4B	SAE B 4-bolt 101.6mm spigot	-		CV	40mm straight keyed	53						
	4C	SAE C 4-bolt 127mm spigot	95		DR	1.1/4" straight keyed	-						
	WQ	Wheel mount 139.7mm spigot	158		DU	1.1/2" straight keyed	63						
					SK	1.1/4" 14T splined	63						
					TP	1.1/4" 1:8 tapered	53						
					TT	1.1/2" 1:8 tapered	-						

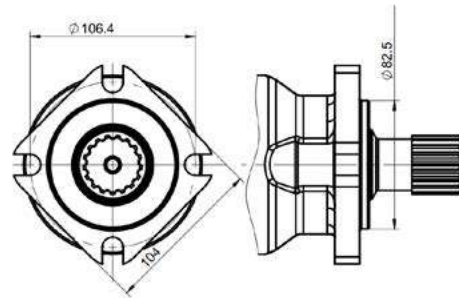
* Refer to specifications for performance data



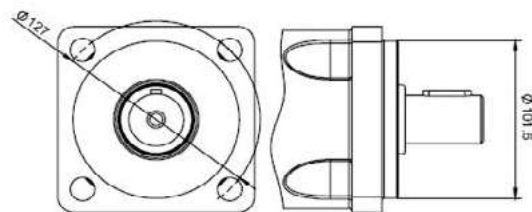
MYZ Standard MYZ4B Series



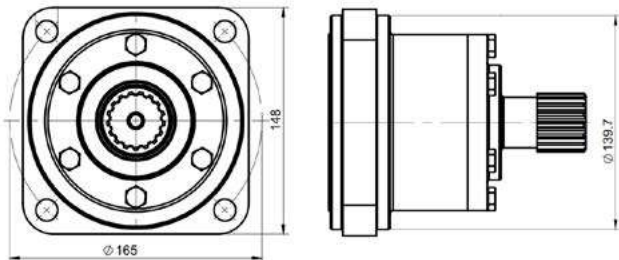
4A Mount SAE A 4-bolt



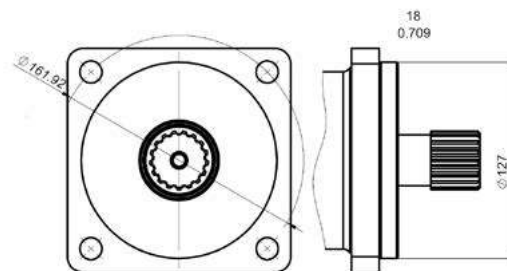
4B Mount SAE B 4-bolt



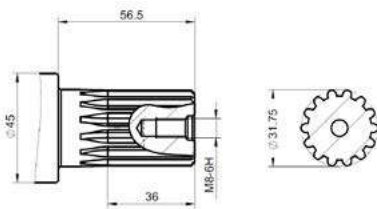
WQ Wheel Mount



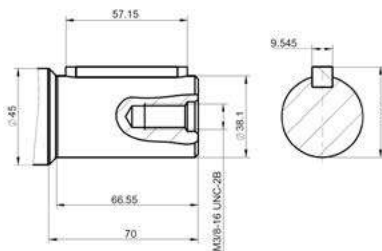
4C Mount SAE C 4-bolt



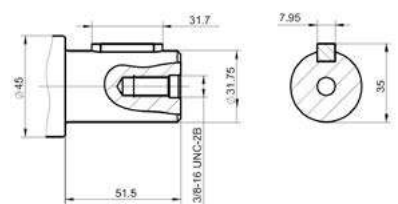
SK 1.1/4" 14T Splined Shaft



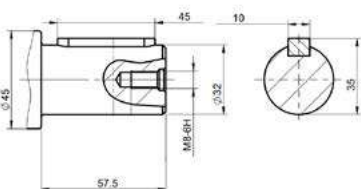
DU 1.1/2" Straight Keyed Shaft



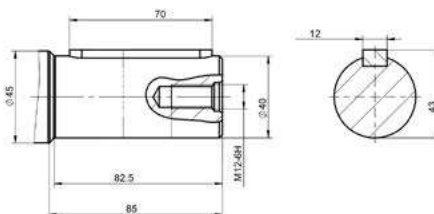
DR 1.1/4" Straight Keyed Shaft



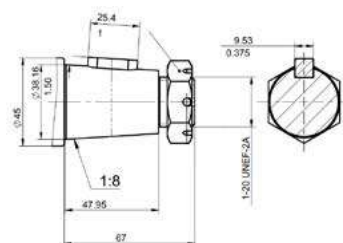
CS 32mm Straight Keyed Shaft



CV 40mm Straight Keyed Shaft



TT 1.1/2" 1:8 Tapered



**TECH
DATA**

MT Series Disc Valve Motor

Standard Pricing: Shaft 40mm Straight Keyed, Mount 4-bolt, Ports 3/4" BSPP, Case 1/4" BSPP

Part #	List Price \$	DISPLACEMENT	ROTOR	SPEED	FLOW	PRESSURE DROP	INLET PRESSURE	TORQUE	WEIGHT
		(cc)	Width L1 (mm)	Max. Cont. (RPM)	Max. Cont. (L/min)	Max. Cont. (Bar)	Max. Cont. (Bar)	Max. Cont. (Nm)	(Kg)
MT 160 CU	2352.00	161.1	16.5	622	100	200	210	470	21
MT 200 CU	2405.00	201.4	21.5	620	125	200	210	590	21.5
MT 250 CU	2468.00	251.8	27.8	496	125	200	210	730	22
MT 315 CU	2531.00	326.3	37	382	125	200	210	950	23
MT 400 CU	2625.00	410.9	47.5	304	125	180	210	1080	24
MT 500 CU	2793.00	523.6	61.5	238	125	160	210	1220	25
MT 630 CU	3266.00	631.2	57.5	197	125	140	210	1300	25.5
MT 725 CU	3434.00	724.3	66.5	172	125	120	210	1270	26

 To ensure best motor life, fill with fluid and run at moderate load for 5-10 minutes

Equivalent to:

BMT *Hydnet*
MGT/GMT *Bosch Rexroth*
HT *Brevini*
OMT *Danfoss*



Seal Kits

Part #	List Price \$	Pressure Rating without Drain Line
MT-SKD	210.00	75 bar ≤150 RPM
MT-SKU	252.00	100 bar ≤300 RPM
MTS-SK	84.00	n/a

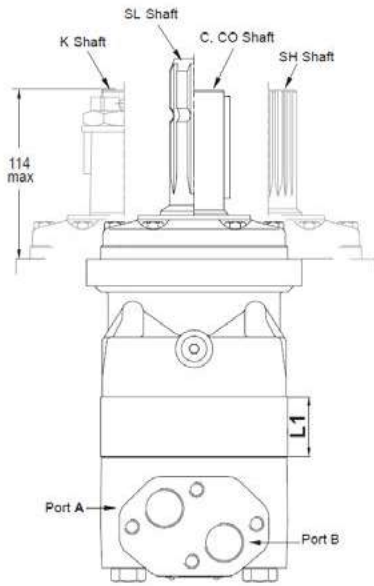
Nomenclature

MT	MOUNTING			DISPLACEMENT	SHAFTS			SHAFT SEALS & SPEED SENSORS		
	Code	Description	\$		Code	Description	\$	Code	Description	\$
	-	Square 4-hole 125mm spigot	-	160-725cc	C	40mm straight keyed	-	U	100 bar shaft seal *	-
	W	Wheel mount 160mm spigot	189		CO	1.1/2" straight keyed	-	HD	Reinforced seals	252
	S	Short motor 125mm spigot	Minus 315		SH	1.1/2" 17T splined	53	RS SH	Speed sensor universal plug type	441
					SH-06	1.1/4" 14T splined	53	RSSH5	Speed sensor universal 5m lead	452
					SL	1.3/8" 6T splined PTO	137	T	Tacho connection	567
					K	45mm 1:10 tapered	73	ST	Electronic speed sensor	1575

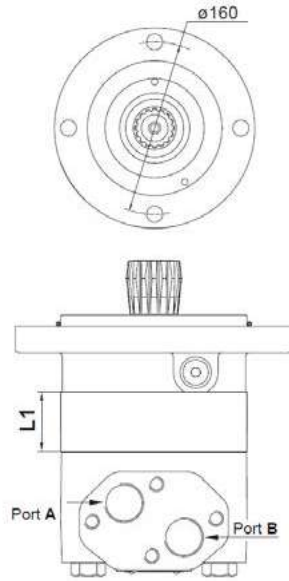
* Refer to specifications for performance data



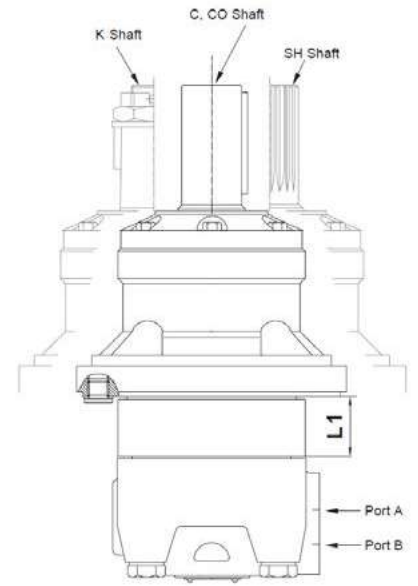
MT Standard MT Series



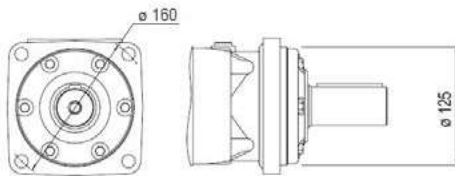
S Short Motor MTS Series



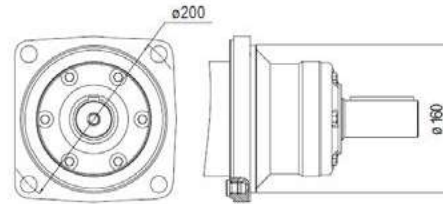
W Wheel Mount MTW Series



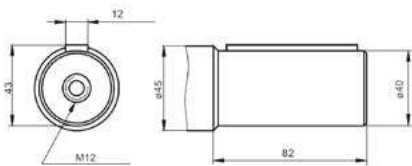
- Standard Mount SAE 4-bolt



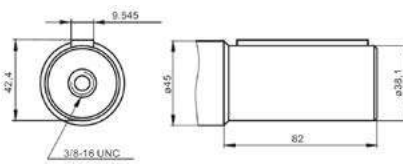
W Wheel Mount 4-bolt



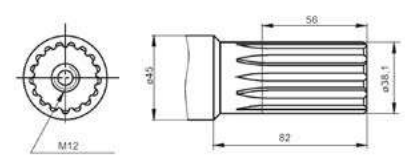
C 40mm Straight Keyed Shaft



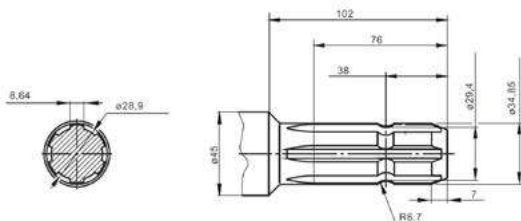
CO 1.1/2" Straight Keyed Shaft



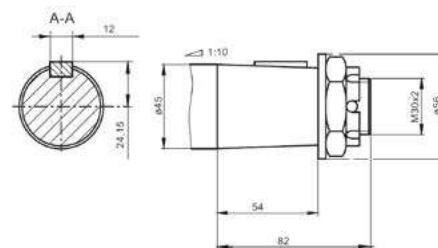
SH 1.1/2" 17T Splined Shaft



SL 1.3/8" 6T Splined PTO Shaft



K 45mm 1:10 Tapered Shaft




**TECH
DATA**

MLHT Series Disc Valve Motor

Standard Pricing: Shaft 1.1/2" Straight Keyed, Mount SAE C 4-bolt, Ports 1.1/16" UNF, Case 9/16" UNF

Part #	List Price \$	DISPLACEMENT	ROTOR	SPEED	FLOW	PRESSURE DROP	INLET PRESSURE	TORQUE	WEIGHT
		(cc)	Width L1 (mm)	Max. Cont. (RPM)	Max. Cont. (L/min)	Max. Cont. (Bar)	Max. Cont. (Bar)	Max. Cont. (Nm)	(Kg)
MLHT 160 C4U	2352.00	161.1	16.5	622	100	200	210	470	21
MLHT 200 C4U	2405.00	201.4	21.5	620	125	200	210	590	21.5
MLHT 250 C4U	2468.00	251.8	27.8	496	125	200	210	730	22
MLHT 315 C4U	2531.00	326.3	37	382	125	200	210	950	23
MLHT 400 C4U	2625.00	410.9	47.5	304	125	180	210	1080	24
MLHT 500 C4U	2793.00	523.6	61.5	238	125	160	210	1220	25
MLHT 630 C4U	3266.00	631.2	57.5	197	125	140	210	1300	25.5
MLHT 725 C4U	3434.00	724.3	66.5	172	125	120	210	1270	26

 To ensure best motor life, fill with fluid and run at moderate load for 5-10 minutes

Equivalent to:
OMT(US) Danfoss



Seal Kits

Part #	List Price \$	Pressure Rating without Drain Line
MLHT-SKU	252.00	75 bar ≤150 RPM

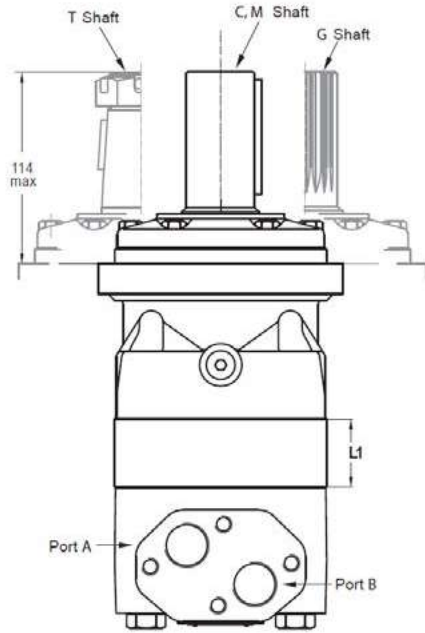
Nomenclature

MOUNTING			DISPLACEMENT			SHAFTS			PORTS			SHAFT SEALS		
Code	Description	\$	160-725cc			Code	Description	\$	Code	Description	\$	Code	Description	\$
-	SAE C 4-bolt 127mm Spigot	-				C	1.1/2" straight keyed	-	4	1.1/16" UNF	-	U	100 bar shaft seal *	-
W	Wheel Mount 160mm Spigot	189				M	40mm straight keyed	-				HD	Reinforced seals	252
						G	1.1/2" 17T spline	53				* Refer to specifications for performance data		
						T	44.45mm 1:8 tapered	74						
						P	34.85mm 6T spline PTO	137						



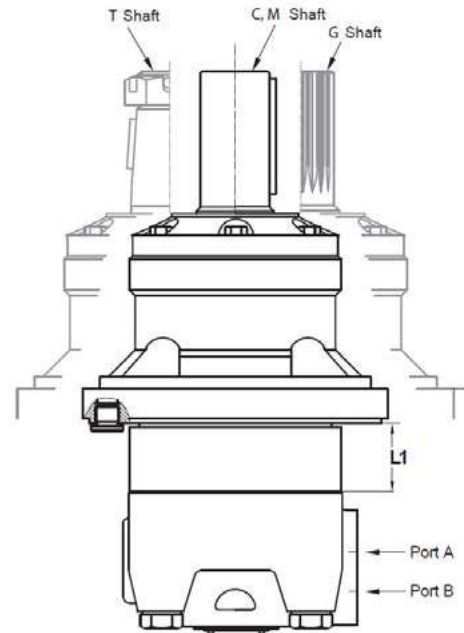
MLHT

Standard MLHT Series

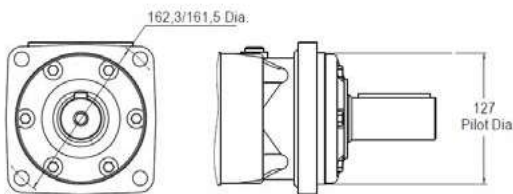


MLHTW

Wheel Mount MLHTW Series

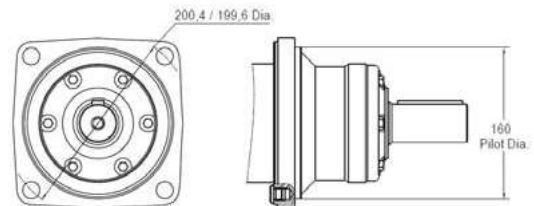


Standard Mount SAE C 4-bolt



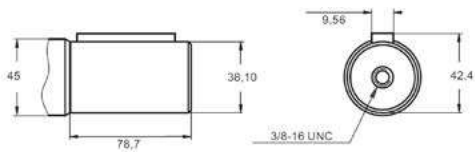
W

Wheel Mount 4-bolt



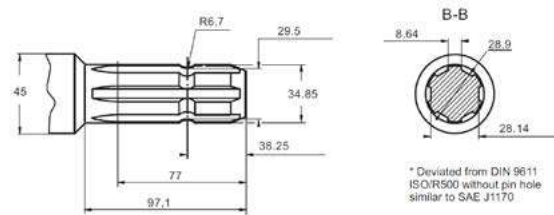
C

1.1/2" Straight Keyed Shaft



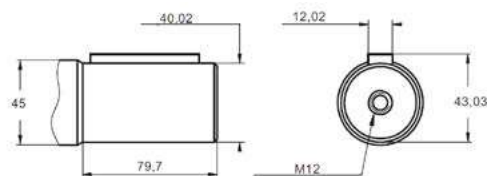
P

34.85mm 6T Splined PTO Shaft



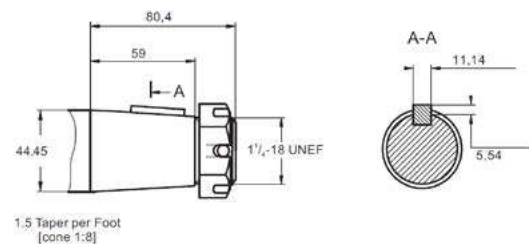
M

40mm Straight Keyed Shaft



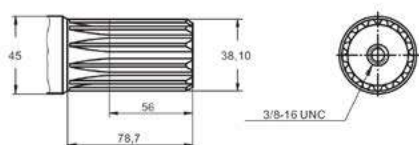
T

44.45mm 1:8 Tapered Shaft



G

1.1/2" 17T Splined Shaft



**TECH
DATA**

MTM Series Disc Valve Motor

Standard Pricing: Shaft 40mm Keyed, Mount Standard 4-bolt, Ports 3/4" BSPP, Case 1/4" BSPP

Part #	List Price \$	DISPLACEMENT	ROTOR	SPEED	FLOW	PRESSURE DROP	INLET PRESSURE	TORQUE	WEIGHT
		(cc)	Width L1 (mm)	Max. Cont. (RPM)	Max. Cont. (L/min)	Max. Cont. (Bar)	Max. Cont. (Bar)	Max. Cont. (Nm)	(Kg)
MTM 200 CU HD	3717.00	201.4	25	625	125	250	270	740	27.9
MTM 250 CU HD	3780.00	251.8	31.3	500	125	250	270	900	28.3
MTM 315 CU HD	3843.00	326.3	40.5	380	125	250	270	1160	29.1
MTM 400 CU HD	3938.00	410.9	51	305	125	250	270	1470	30
MTM 470 CU HD	4011.00	475	59	260	125	250	270	1710	30.7
MTM 500 CU HD	4106.00	523.6	65	240	125	230	270	1720	31.2
MTM 630 CU HD	4578.00	631.2	61	190	125	200	270	1830	30.7
MTM 725 CU HD	4746.00	724	70	170	125	160	270	1600	32

 To ensure best motor life, fill with fluid and run at moderate load for 5-10 minutes

Equivalent to:

TMT Danfoss
6000 Eaton Char Lynn



Seal Kits

Part #	List Price \$	Pressure Rating without Drain Line
MTM-SKD	294.00	75 bar ≤150 RPM
MTM-SKU	315.00	100 bar ≤300 RPM

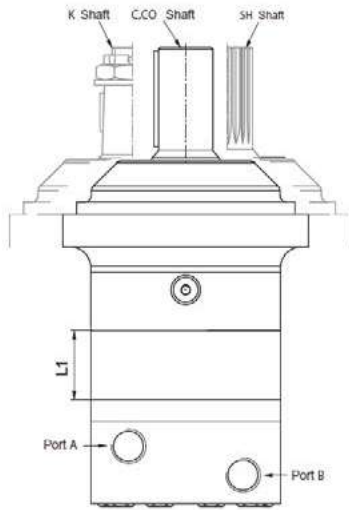
Nomenclature

MTM	MOUNTING			DISPLACEMENT	SHAFTS			SHAFT SEALS		
	Code	Description	\$		Code	Description	\$	Code	Description	\$
	-	Square 4-bolt 160mm spigot	-	200-725cc	C	40mm straight keyed	-	HD	75 bar * (reinforced seals)	-
	C	Square 4-bolt 125mm spigot	147		SH	1.1/2" 1TT splined	53	U	100 bar	-
	W	Wheel mount 160mm spigot	189		K	50mm 1:10 tapered	74			
					CO	1.1/2" keyed	53			

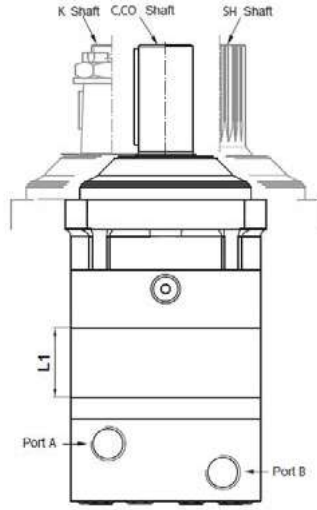
* Refer to specifications for performance data



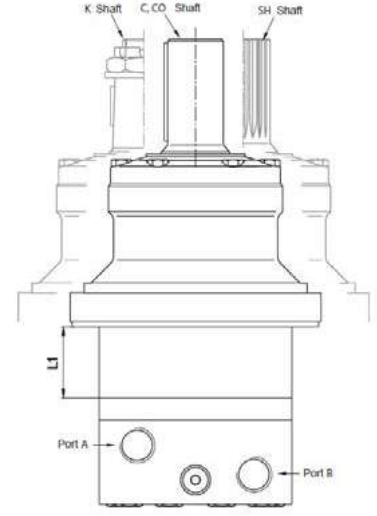
MTM Standard MTM Series



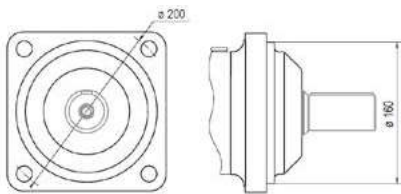
MTMC MTMC Series



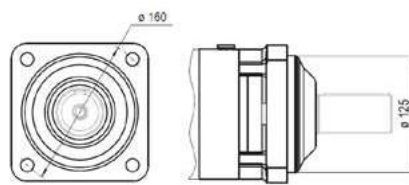
MTMW MTMW Series



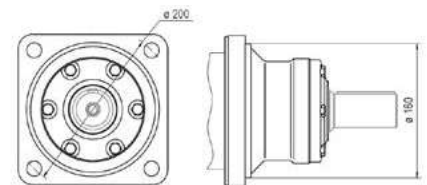
- Standard Mount 4-bolt



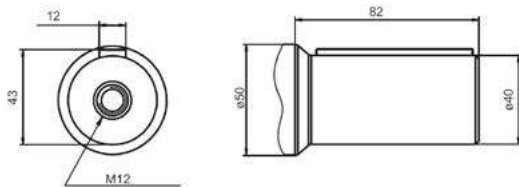
C Mount 4-bolt



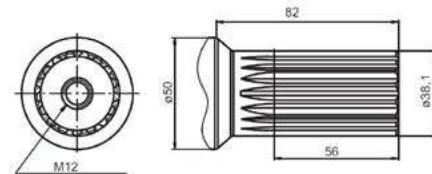
W Wheel Mount 4-bolt



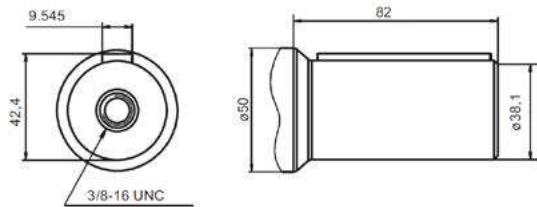
C 40mm Straight Keyed Shaft



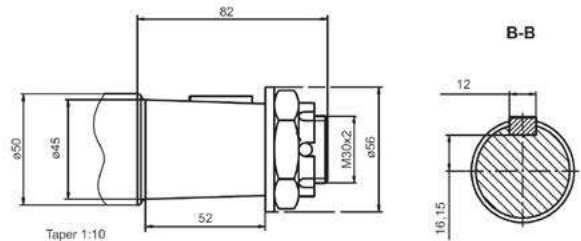
SH 1.1/2" 17T Splined Shaft



CO 1.1/2" Straight Keyed Shaft



K 50mm 1:10 Tapered Shaft




**TECH
DATA**

MV Series Disc Valve Motor

Standard Pricing: Shaft 50mm Straight Keyed, Mount Standard 4-bolt, Ports 1" BSPP, Case 1/4" BSPP

Part #	List Price \$	DISPLACEMENT	ROTOR	SPEED	FLOW	PRESSURE DROP	INLET PRESSURE	TORQUE	WEIGHT
		(cc)	Width L1 (mm)	Max. Cont. (RPM)	Max. Cont. (L/min)	Max. Cont. (Bar)	Max. Cont. (Bar)	Max. Cont. (Nm)	(Kg)
MV 315 CU HD	3465.00	314.5	22	510	160	200	210	920	32.8
MV 400 CU HD	3591.00	400.9	29	500	200	200	210	1180	33.6
MV 500 CU HD	3822.00	499.6	37	400	200	200	210	1460	34.5
MV 630 CU HD	4431.00	629.1	47.5	320	200	180	210	1660	35.9
MV 800 CU HD	4652.00	801.8	61.5	250	200	160	210	1880	37.5

 To ensure best motor life, fill with fluid and run at moderate load for 5-10 minutes

Equivalent to:

BMV Hydnet

MGV/GMV Bosch Rexroth

OMV Danfoss



Seal Kits

Part #	List Price \$	Pressure Rating without Drain Line
MV-SK	252.00	60 bar ≤100 RPM
MV-SKU	315.00	60 bar ≤350 RPM
MV-SKU-HD	399.00	60 bar ≤350 RPM
MVC-SK	252.00	60 bar ≤100 RPM
MVC-SKU	315.00	60 bar ≤350 RPM
MVC-SKU-HD	399.00	60 bar ≤350 RPM
MVS-SK	84.00	n/a

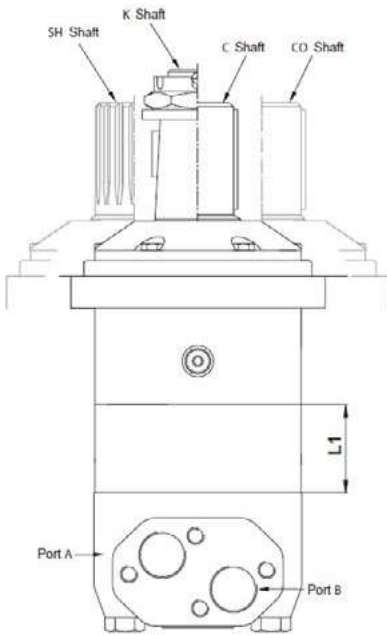
Nomenclature

MV	MOUNTING			DISPLACEMENT	SHAFTS			SHAFT SEALS		
	Code	Description	\$		Code	Description	\$	Code	Description	\$
	-	Square 4-bolt 160mm spigot	-	315-800cc	C	50mm straight keyed	-	U	60 bar *	-
	C	SAE C 4-bolt 127mm spigot	116		CO	2.1/4" straight keyed	-	HD	Reinforced seals	-
	W	Wheel Mount 180mm spigot	294		SH	2.1/8" 16T splined	95			
	S	Short Motor 140mm spigot	Minus 550		K	60mm 1:10 tapered	126			

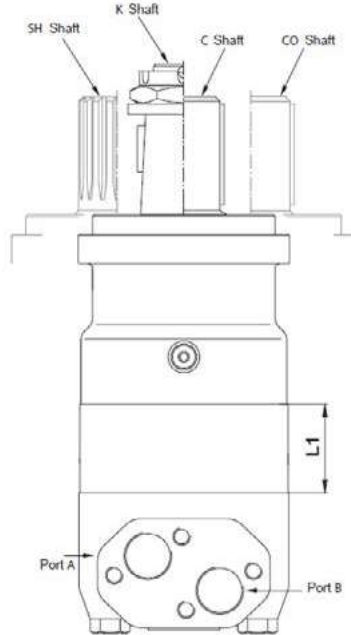
* Refer to specifications for performance data



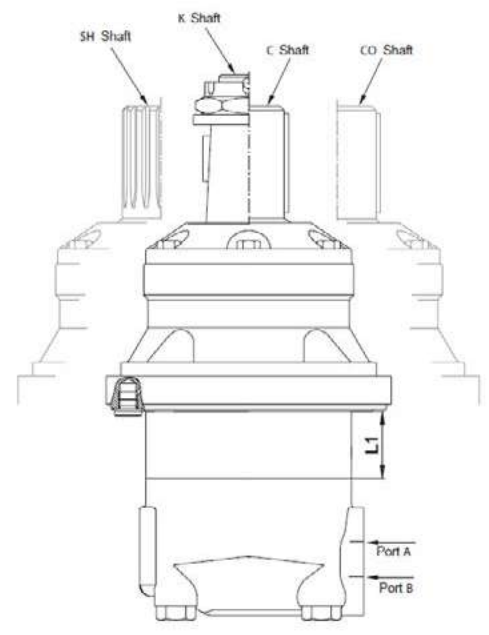
MV Standard Mount MV Series



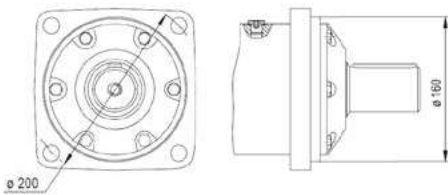
MVC MVC Series



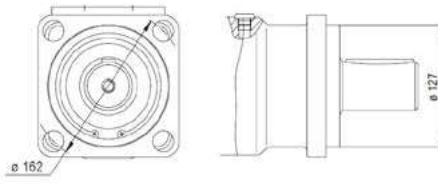
MVV MVV Series



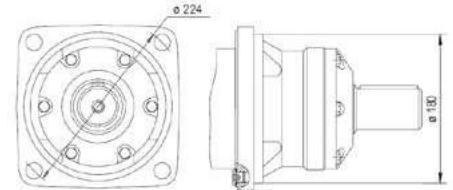
- Standard Mount 4-bolt



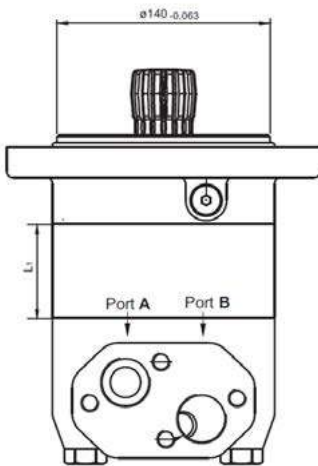
C Mount 4-bolt



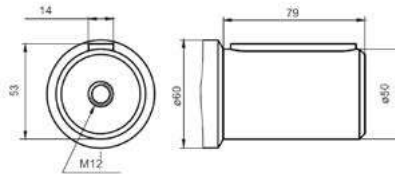
W Wheel Mount 4-bolt



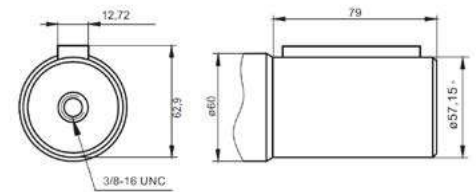
S Short Motor Mount



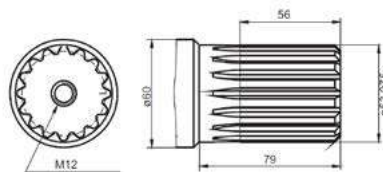
C 50mm Straight Keyed Shaft



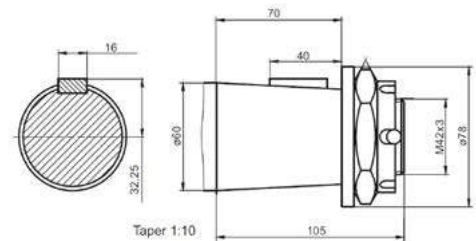
CO 2.1/4" Straight Keyed Short



SH 2.1/8" 16T Splined Shaft



K 60mm 1:10 Tapered Shaft




**TECH
DATA**

MLHV Series Disc Valve Motor

Standard Pricing: Shaft 2.1/4" Keyed, Mount Standard 4-bolt, Ports 1.5/16" UNF, Case 9/16" UNF

Part #	List Price \$	DISPLACEMENT	ROTOR	SPEED	FLOW	PRESSURE DROP	INLET PRESSURE	TORQUE	WEIGHT
		(cc)	Width L1 (mm)	Max. Cont. (RPM)	Max. Cont. (L/min)	Max. Cont. (Bar)	Max. Cont. (Bar)	Max. Cont. (Nm)	(Kg)
MLHV 315 C4U HD	3465.00	314.5	22	510	160	200	210	920	31.7
MLHV 400 C4U HD	3591.00	400.9	29	500	200	200	210	1180	32.5
MLHV 500 C4U HD	3822.00	499.6	37	400	200	200	210	1460	33.4
MLHV 630 C4U HD	4431.00	629.1	47.5	320	200	180	210	1660	34.6
MLHV 800 C4U HD	4652.00	801.8	61.5	250	200	160	210	1880	36.2

 To ensure best motor life, fill with fluid and run at moderate load for 5-10 minutes

Equivalent to:
OMT(US) Danfoss



Seal Kits

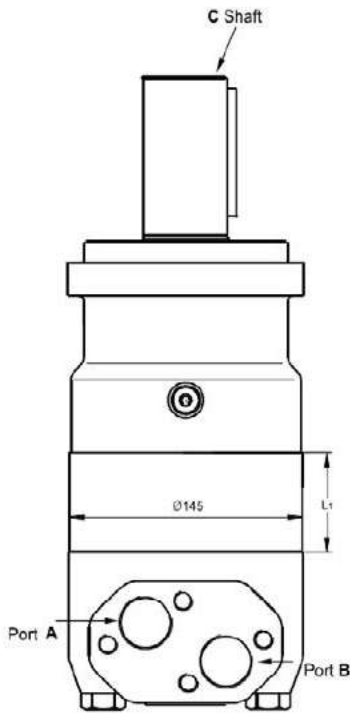
Part #	List Price \$	Pressure Rating without Drain Line
MLHV-SKU-SD	399.00	60 bar ≤350 RPM
MLHVC-SKU-HD	399.00	60 bar ≤350 RPM

Nomenclature

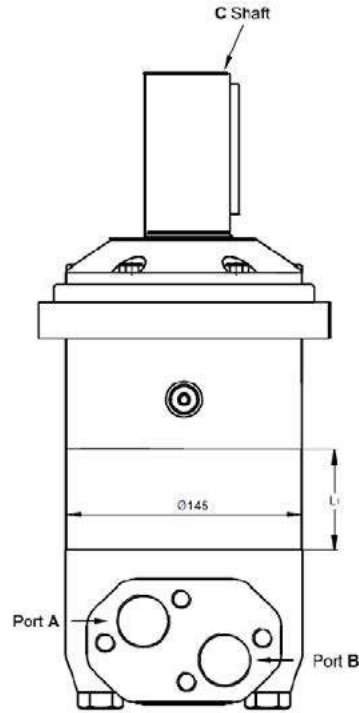
MLHV	MOUNTING			DISP.	SHAFTS			PORTS			SHAFT SEALS		
	Code	Description	\$		Code	Description	\$	Code	Description	\$	Code	Description	\$
-	Square 4-bolt	-	315-800cc	C	2.1/4" straight keyed	-	4	1.5/16" UNF	-	HD	Reinforced seals	-	
C	SAE C 4-bolt	168		MA	40mm straight keyed	74				U	Standard seals	-	
				G	2.1/8" 16T spline	95							
				T	2.1/4" 1:8 tapered	126							
				CA	1.1/2" straight keyed	74							



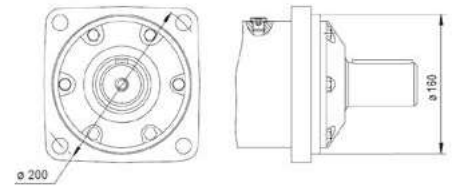
MLHV Standard Mount Square 4-bolt



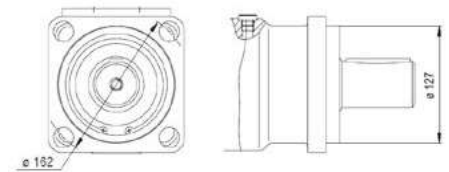
MLHVC Standard SAE C 4-bolt Mount



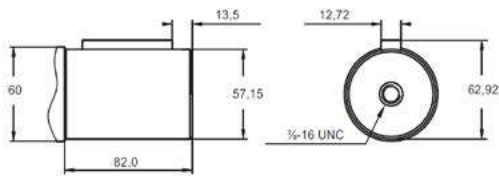
- Standard Mount 4-bolt



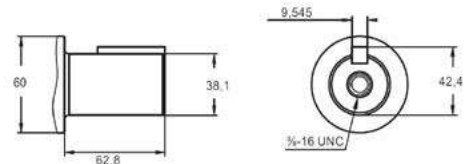
C SAE C 4-bolt Mount



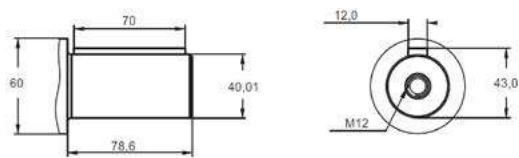
C 2.1/4" Straight Keyed Shaft



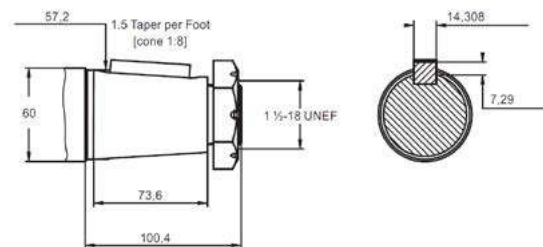
CA 1.1/2" Straight Keyed Shaft



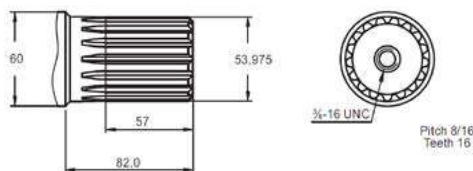
MA 40mm Straight Keyed Shaft



T 2.1/4" 1:8 Tapered Shaft



G 2.1/8" 16T Splined Shaft



**TECH
DATA**

LB Series Static Torque Disc Brakes

Part #	List Price \$	Brake Input		Brake Output Shaft Mount	Static Torque (Nm)	Opening Pressure Min/Max (Bar)	Min Oil Release (cm ³)	Max Pressure Drain (Bar)	Weight (Kg)
		Motor Series	Shaft Mount						
LB/288CO-63CO	1218.00	MP, MR	1" keyed SAE A 2-bolt	1" keyed SAE A 2/4-bolt	610-640	23/300	7-8	0.5	10
LB/288SH-63CO	1218.00	MP, MR	1" 6B splined SAE A 2-bolt	1" keyed SAE A 2/4-bolt	610-640	23/300	7-8	0.5	10
LB/288CB-63CB	1218.00	MP, MR, MH, MS	32mm straight SAE A 2/4-bolt	32mm straight SAE A 2/4-bolt	610-640	23/300	7-8	0.5	10
LBS/289-63CB	1565.00	MSS Short		32mm straight SAE A 2/4-bolt	610-640	23/300	7-8	5	9
LBS/290-63KB	1649.00	MSS Short		35mm 1:10 tapered wheel	610-640	23/300	7-8	5	9
LBS/290-63SH	1649.00	MSS Short		1/4" 14T shaft	610-640	23/300	7-8	5	9
LBS/314-130C	2394.00	MTS Short		40mm straight keyed 4-bolt mount	1260-1360	29/300	8-9	5	24
LBS/315-130K	2499.00	MTS Short		45mm 1:10 tapered wheel	1260-1360	29/300	8-9	5	25
LBS/316-130C	2877.00	MVS Short		50mm straight keyed 4-bolt	1270-1370	29/300	8-9	5	26
LBS/316-130K	2877.00	MVS Short		60mm 1:10 tapered wheel	1270-1370	29/300	8-9	5	26

Seal Kits

Part #	List Price \$
LB288-SK	126.00
LBS289/290-SK	147.00
LBS314/315-SK	179.00
LBS316-SK	210.00

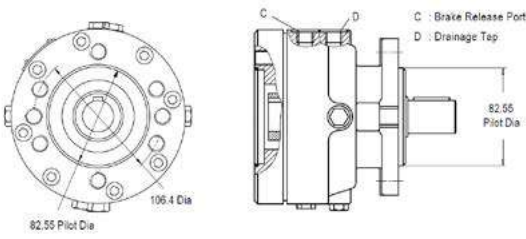


LB Series

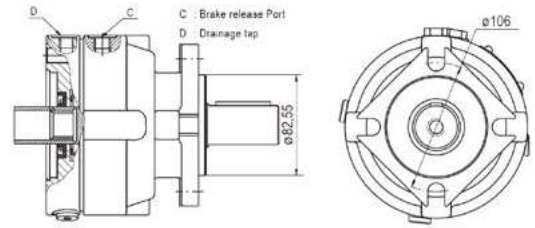


LBS Series

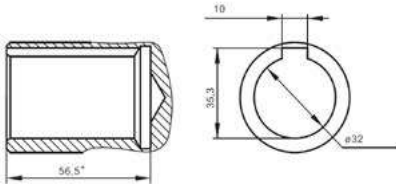
LB/288 - Input/Side/Output



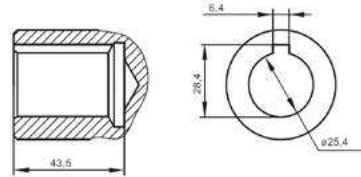
LBS289CS - Side/Output



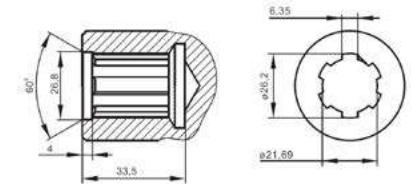
LB/288 - CB Input Shaft



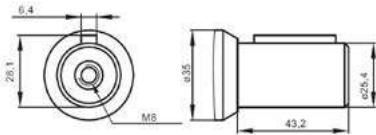
LB/288 - C0 Input Shaft



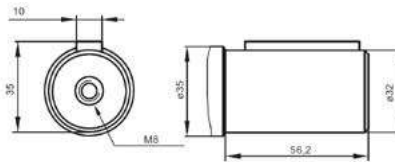
LB/288 - SH Input Shaft



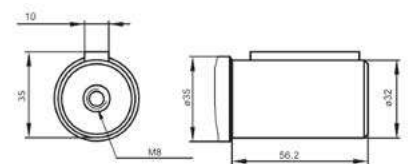
LB/288 - CB Output Shaft



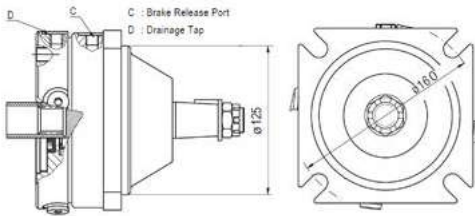
LB/288 - C0 Output Shaft



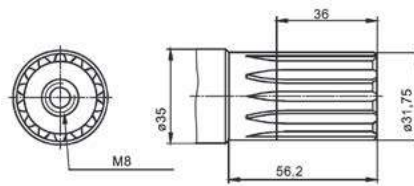
LBS/289 - CB Output Shaft



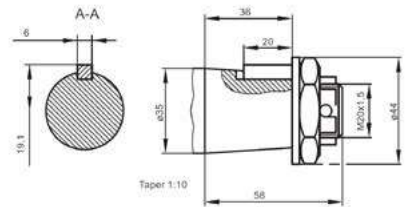
LBS/290KB - Side/Output



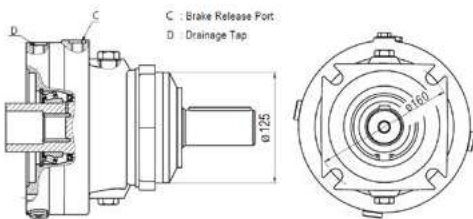
LBS/290 - SH - Side/Output



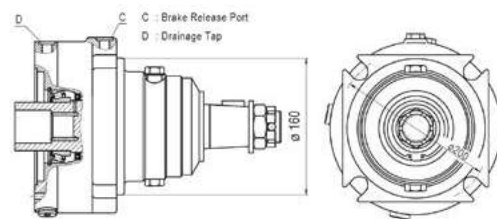
LBS/290 - KB Output Shaft



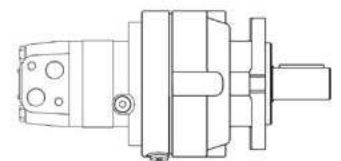
LBS/314C - Side/Output



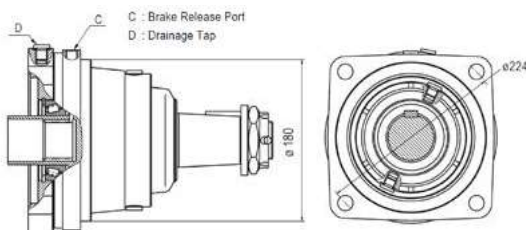
LBS/315K - Side/Output



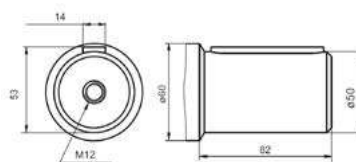
Example: MSS Motor + LBS289



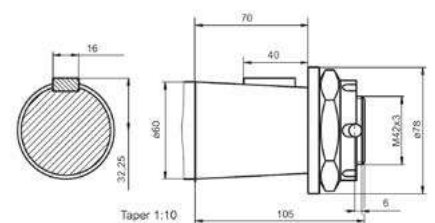
LBS/316K - Side/Output



LBS/316 - C Output Shaft



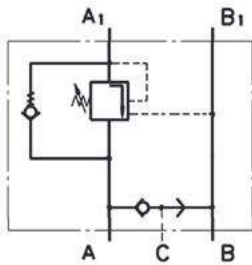
LBS/316 - K Output Shaft



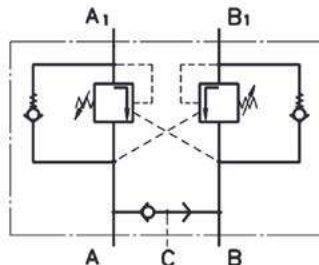
**TECH
DATA**

Overcentre Valve with Brake Release Port

Part #	List Price \$	Motor Type	Cartridge	A/B Ports	C Ports	Max. Cont. Flow	Pressure Range	Pilot Ratio
KPBR 250/1/D	578.00	MP, MR, MH, MPYN, MRYN	Dual	1/2" BSPP	1/4" BSPP	60 L/min	60-280 bar	4.25:1
KPBHR 250/1/D	578.00	HP, HR	Dual	7/8"-14 UNF	7/16"-20 UNF	60 L/min	70-250 bar	4.25:1
KPBW 250/1/D	588.00	RW, HW	Dual	1/2" BSPP	1/4" BSPP	60 L/min	60-280 bar	4.25:1
KPBS 250/1/AE	473.00	MS	Single	1/2" BSPP	1/4" BSPP	60 L/min	60-280 bar	4.25:1
KPBS 250/1/D	588.00	MS	Dual	1/2" BSPP	1/4" BSPP	60 L/min	60-280 bar	4.25:1
KPBS 250/2/D	599.00	MS	Dual	1/2" BSPP	1/4" BSPP	60 L/min	60-280 bar	8:1
KPBT 250/1/AE	536.00	MT	Single	3/4" BSPP	1/4" BSPP	100 L/min	70-250 bar	4.25:1
KPBT 250/1/D	609.00	MT	Dual	3/4" BSPP	1/4" BSPP	100 L/min	70-250 bar	4.25:1
KPBV 250/1/D	1208.00	MV	Dual	1" BSPP	1/4" BSPP	200 L/min	70-250 bar	4.25:1



Single



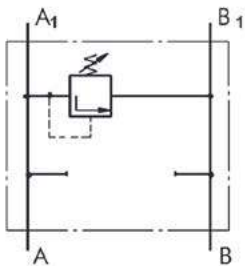
Dual



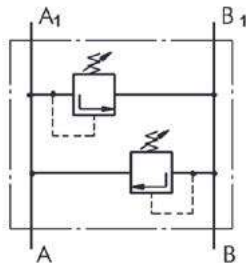
**TECH
DATA**

Cross Line Relief Valve

Part #	List Price \$	Motor Type	Cartridge	Ports	Max. Cont. Flow	Pressure Range
KPDR 210	294.00	MP, MR, MH, MPYN, MRYN	Dual	1/2" BSPP	60 L/min	50-210 bar
KPDS 210	294.00	MS	Dual	1/2" BSPP	60 L/min	50-210 bar
KPDT 210	1019.00	MT	Dual	3/4" BSPP	120 L/min	80-210 bar
KPDV 250	1271.00	MV	Dual	1" BSPP	200 L/min	20-250 bar



Single



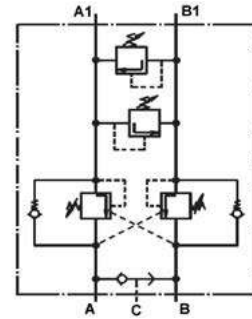
Dual



TECH DATA

Overcentre and Crossline Relief Valve combined with Brake Release Port

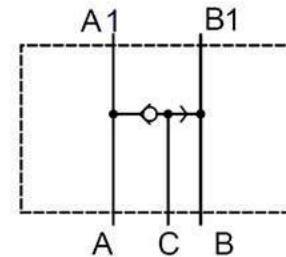
Part #	List Price \$	Motor Type	Cartridge	A/B Ports	C Ports	Flow	Relief Press.	Overcentre Press.	Pilot Ratio
KPDDBR210-250/1/D	1103.00	MP, MR, MH, MPYN, MRYN	Dual	1/2" BSPP	1/4" BSPP	60 L/min	210 bar	250 bar	4.25:1



TECH DATA

Shuttle Valve

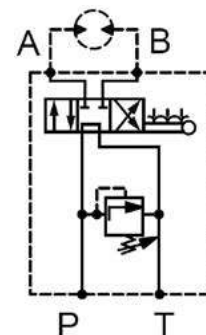
Part #	List Price \$	Motor Type	A/B Ports	C Ports	Max. Cont. Flow	Max. Cont. Pressure
KPWR	179.00	MP, MR, MH, MPYN, MRYN	1/2" BSPP	1/4" BSPP	60 L/min	250 bar
KPWS	179.00	MS	1/2" BSPP	1/4" BSPP	60 L/min	250 bar
KPWT	368.00	MT	3/4" BSPP	1/4" BSPP	100 L/min	250 bar
KPWV	588.00	MV	1" BSPP	1/4" BSPP	200 L/min	250 bar



TECH DATA

Handle Operated Directional Control Valve with Relief

Part #	List Price \$	Motor Type	A/B Ports	Max. Cont. Flow	Max. Cont. Pressure Drop
BDR 1205/25A	683.00	MP, MR, MH, MPYN, MRYN	1/2" BSPP	50 L/min	30-250 bar
BDS 1205/25A	683.00	MS	1/2" BSPP	50 L/min	30-250 bar



**TECH
DATA**

Cross Line Relief Valve

Part #	List Price \$	Max Flow Rate	Pressure Range	Series	A+B Ports	Bolts
DCF1201	282.00	40 L/min	10-40 bar	MP, MR, MPYN, MRYN	1/2" BSPP	M8x40 cap screw
DCF1202	282.00	40 L/min	20-210 bar	MP, MR, MPYN, MRYN	1/2" BSPP	M8x40 cap screw
DCF1203	282.00	40 L/min	70-350 bar	MP, MR, MPYN, MRYN	1/2" BSPP	M8x40 cap screw
DCM1201	282.00	40 L/min	10-40 bar	MSY	1/2" BSPP	M10x40 cap screw
DCM1202	282.00	40 L/min	20-210 bar	MSY	1/2" BSPP	M10x40 cap screw
DCM1203	282.00	40 L/min	70-350 bar	MSY	1/2" BSPP	M10x40 cap screw

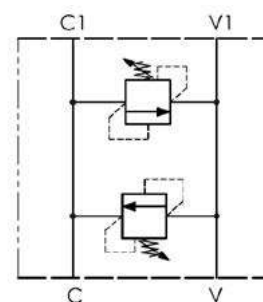


DCF



DCM

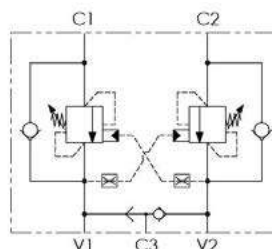
OLEOWEB
MADE IN EUROPE



**TECH
DATA**

Dual Counter Balance Valve

Part #	List Price \$	Max Flow Rate	Pressure Range	Series	A+B Ports	Ratio	Bolts
DCVB1201S	601.00	60 L/min	30-210 bar	MP, MR, MPYN, MRYN	1/2" BSPP	1:4.25	M8x50 Cap Screw (x4)

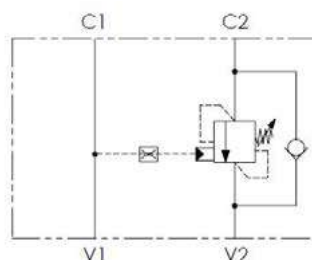


OLEOWEB
MADE IN EUROPE

**TECH
DATA**

Single Counter Balance Valve

Part #	List Price \$	Max Flow Rate	Pressure Range	Series	A+B Ports	Ratio	Bolts
SCVB1201S	540.00	60 L/min	30-210 bar	MP, MR, MPYN, MRYN	1/2" BSPP	1:4.25	M8x50 Cap Screw (x4)

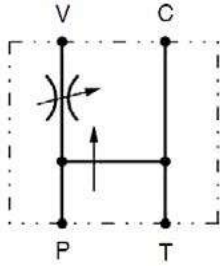


OLEOWEB
MADE IN EUROPE

**TECH
DATA**

Priority Flow Control Valve

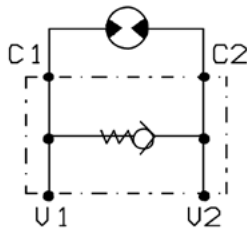
Part #	List Price \$	Max Flow Rate	Max Pressure	Max Adj. Flow	Series	A+B Ports
PVETOMP03	794.00	60 L/min	250 bar	50 L/min	MP, MR, MPYN, MRYN	1/2" BSPP



**TECH
DATA**

Anti-Cavitation (rundown) Check Valve

Part #	List Price \$	Max Flow Rate	Max Pressure	Cracking Pressure	Series	A+B Ports
ACVOMS03	377.00	50 L/min	250 bar	0.5 bar	MS	1/2" BSPP
ACVOMP03	380.00	50 L/min	250 bar	0.5 bar	MP, MR, MPYN, MRYN	1/2" BSPP



**TECH
DATA**

HKU Series Steering Orbital

Configuration: Open centre, non-load reaction, Ports: 1/2" BSPP

Part #	List Price \$	DISPLACEMENT	ROTOR	FLOW	PRESSURE DROP	PRESSURE TANK	WEIGHT
		(cc)	Width L1 (mm)	Max. Cont. (L/min)	Max. Cont. (Bar)	(Bar)	(Kg)
HKU 40/4	882.00	39.6	6.5	4	140	25	5.3
HKU 50/4	882.00	49.5	6.5	5	140	25	5.4
HKU 63/4	882.00	65.6	8.2	6	170	25	5.5
HKU 80/4	882.00	79.2	10.6	8	170	25	5.6
HKU 100/4	893.00	99.0	13.2	10	170	25	5.7
HKU 125/4	903.00	123.8	16.6	13	170	25	5.8
HKU 160/4	935.00	158.4	20.8	16	170	25	6.0
HKU 200/4	987.00	198.0	26.6	20	170	25	6.3
HKU 250/4	1050.00	247.5	32.9	25	170	25	6.5
HKU 320/4	1113.00	316.8	42.7	32	170	25	7.0
HKU 400/4	1166.00	396.0	52.9	40	170	25	7.4
HKU 500/4	1764.00	495.0	61.2	50	170	25	8.0
HKU 630/4	1848.00	623.6	83.6	63	140	25	8.7
HKU 800/4	1932.00	793.0	110.7	70	140	25	9.6
HKU 1000/4	2846.00	990.0	133.2	70	100	25	10.6

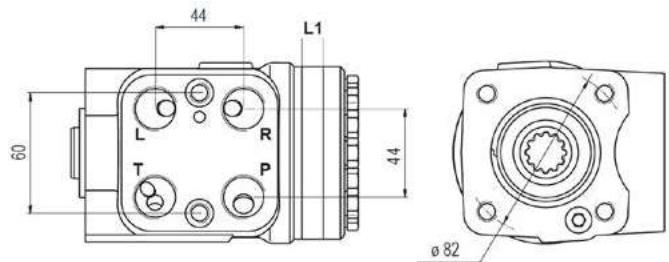
Nomenclature

HKU	RELIEF			DISP.	CONFIGURATION			RELIEF SETTINGS			OPTIONS		
	Code	Description	\$		Code	Description	\$	Code	Description	\$	Code	Description	\$
	S	Built-in relief & shock valves	158	40-1000cc	4	Open centre non-load reaction	-	150	150 bar relief 200 bar shock valves	-	-	1/2" BSPP ports	-
	LS	Built-in relief & shock valves for use with DT (500-100cc)	431		3	Open centre load reaction	32	175	175 bar relief 240 bar shock valves	-	A	3/4" UNF ports	32
					7	Closed centre non-load reaction	32				PB	Power beyond *	105
					5	Load sense static, use with PRD/80 valve	189				H	High pressure shaft seal	53
					5T	Load sense - static	189						
					5DT	Load sense - dynamic*	200						

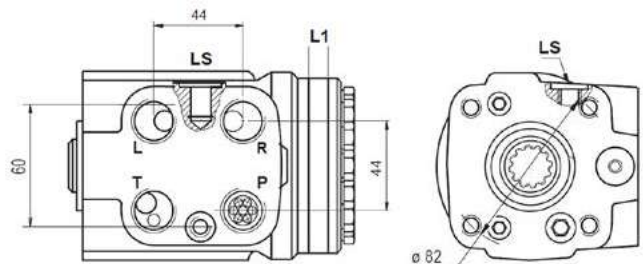
* Available for displacements 40-125cc only



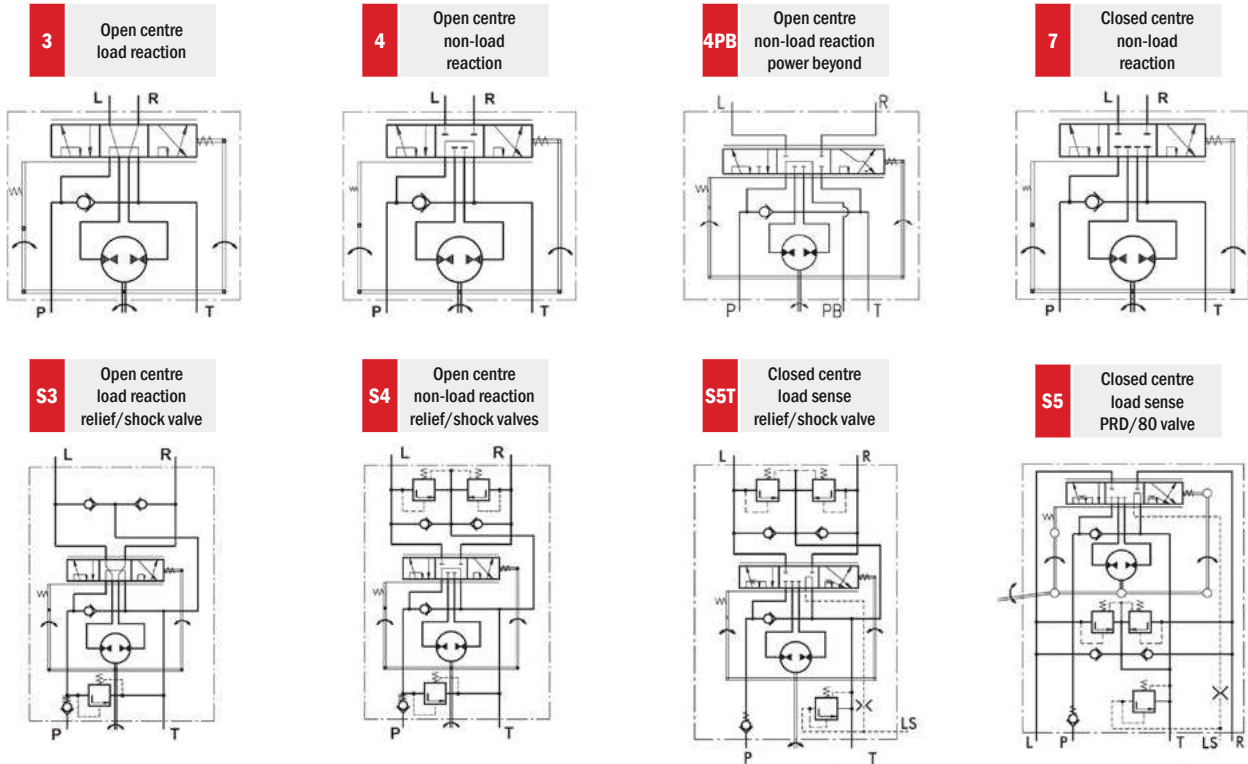
* for 500-1000cc units, use code HKULS



HKU Standard (side & top view)



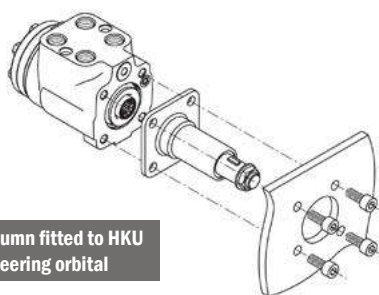
HKUS Load Sense (side & top view)



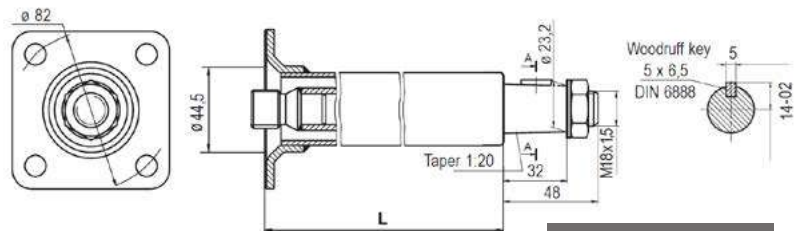
TECH DATA

KK Series Steering Column & Shaft Journal

Part #	List Price \$	Length (mm) L	Weight (kg)
KK75-I	200.00	78	0.75
KK150-I	210.00	168.2	1.1
KK275-I	226.00	278	1.5
KK390-I	284.00	393	1.9
KK465-I	310.00	465	2.5
KK750-I	525.00	777.8	3.3
SJ-HKU	53.00	Shaft journal - to suit HKU series steering orbitals	
(Option) E	63.00	Electrical signal connection	
(Option) F	32.00	Mounting flange with tabs	



KK column fitted to HKU steering orbital

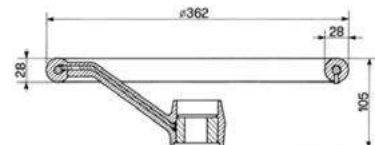


Standard KK column 1:20 taper shaft

TECH DATA

Steering Wheel

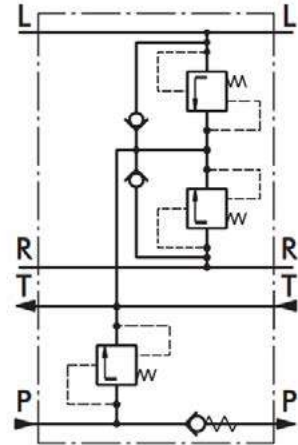
Part #	List Price \$	Wheel Dia. (mm)	Column Shaft Input
360 Wheel	189.00	362	1:20 tapered
360-S-KNOB	42.00	Wheel spinner (for 360 Wheel only)	



**TECH
DATA**

Relief Valve

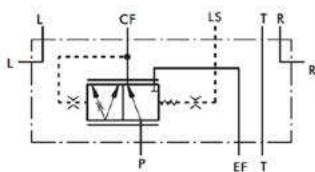
Part #	List Price \$	Max Cont Flow	Max Cont Press	Relief Setting	Shock Valves	Weight	Mounting
BKH1-150	231.00	80 L/min	160 bar	150 bar	200 bar	1.9 kg	Direct mount



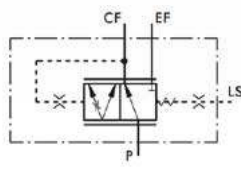
**TECH
DATA**

Priority Valve w/ Load Sense

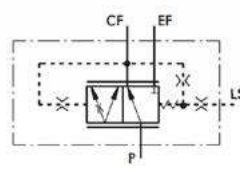
Part #	List Price \$	Max Cont Flow	Pressure P,EF	Pressure CF,S,#	Pressure R,L	Pressure Tank	Mounting
PRD 80/7	368.00	80 L/min	250 bar	210 bar	280 bar	20 bar	Direct mount
PRTA 80/7	410.00	80 L/min	250 bar	210 bar	-	-	Inline
PRTAD 80/7	389.00	80 L/min	250 bar	210 bar	-	-	Inline



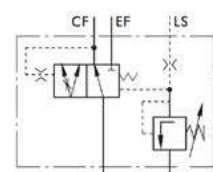
PRD



PRTA



PRTAD



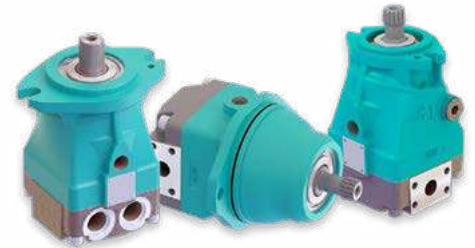
PRT

COMING SOON IN 2026

AXIAL PISTON MOTORS

MEDIUM & HEAVY DUTY, VARIABLE & FIXED DISPLACEMENT

On the way later in 2026 are a range of axial piston motors from M+S Hydraulic, including:



MAM Series

Medium Duty

Fixed displacement 20-50cc

Output speed up to 3600 RPM

Max cont pressure up to 300 bar



MAP Series

Heavy Duty

Fixed displacement 35-100cc

Output speed up to 4200 RPM

Max cont pressure up to 350 bar



MA2V Series

Heavy Duty

Variable displacement 25-50cc

Output speed up to 4000 RPM

Max cont pressure up to 250 bar



Applications:

- Agricultural machines
- Road-building machines
- Mining machinery
- Food industry machines
- Swing drives
- Hydraulic transmissions
- Vibration machines
- Fan drives
- Special vehicles

Options:

- Port options
- Flange options
- Shaft options
- High pressure ports
- Integrated valves

Advantages:

- Smooth operation
- Long service life
- High power density
- High starting torque